

Drop Tube

PRODUCT

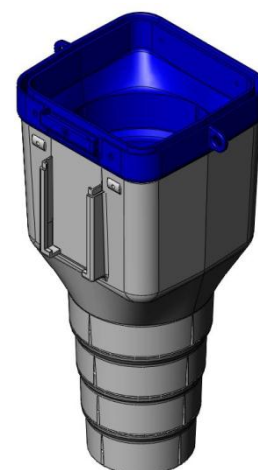
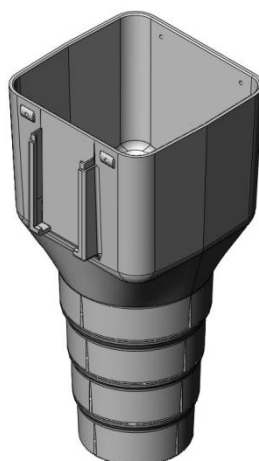
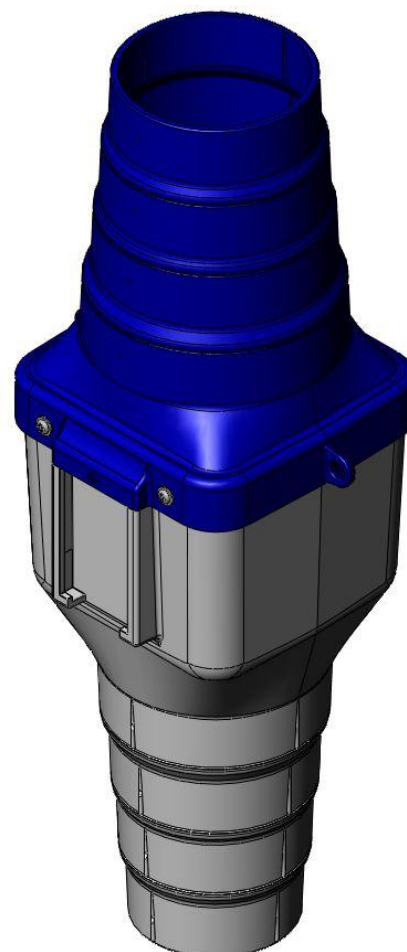
- Product for easy mounting of capacitive sensors in pig and poultry feeding systems.
- The product is well suited for both agricultural and industrial applications.
- By selecting tube diameters hopper functionality can be obtained.

FIELD OF APPLICATION

- On/Off switch in drops, hoppers, pans, silos and containers.
- Control of chain feeding in swine houses.
- Control of pan feeding lines in poultry houses.
- Extenders.

KEY PRODUCT FEATURES

- Functionality.
 - Fits several types of sensors.
 - Supports several tube diameters.
 - Adaption between different tube diameters.
 - "Ears" for chain- fixations of extendable tubes.
- Snap-in function between top and bottom part.
- Suitable for cutting, drilling, screws and snap hooks.
- Integrated drilling and cutting guide marks.
- Wide operating temperature range.
- Handles high vertical load.
- Working 360° in an angle up to 30° from vertical without bridging.
- Resistant to high pressure cleaning load and disinfection agents.
- Smooth surfaces without sharp edges.
- Minimum shipping volume



TECHNICAL DATA

Specifications	Relay	Unit
Weight	0,46	Kg
	1,01	Pounds
Temperature, operation/storage	-40 to +60	°C
	-40 to +140	°F
Humidity	0 to 100	% RH
Rotation angle	0 to 360	°
Working angle from vertical	0 to 30	°
Max. load, tubes, vertical	75	Kg
	165	Pounds
Max. load, ears, vertical	50	Kg
	110	Pounds
Max. fat content in feed	6	%
Max. water content in feed	15	%
Life time, expected	10	Years
Approvals	CE, FDA	

TUBE DIMENSIONS SPECIFIED FOR THE DROP TUBE AND VOLUME OF FEED FOR EVALUATION OF HOPPER REPLACEMENT

Inside Diameter		Outside Diameter		Volume pr. feet	Volume pr. meter
"	mm	"	mm	Gallons	Litre
3,000	76,200	3,188	80,980	0,37	4,56
3,313	84,150	3,500	88,900	0,45	5,56
3,563	90,500	3,750	95,250	0,52	6,43
3,938	100,030	4,125	104,780	0,63	7,85

SENSORS SUPPORTED BY THE DROP TUBE

Type	Fixation
DOL 20R	Integrated fixture/frame
DOL 25	2 pcs. M18 nuts or PG21 gland – drill guide marks on the Drop Tube
DOL 40	2 pcs. M30 nuts or PG36 gland – drill guide marks on the Drop Tube
DOL 33	PG36 gland – drill guide marks on the Drop Tube