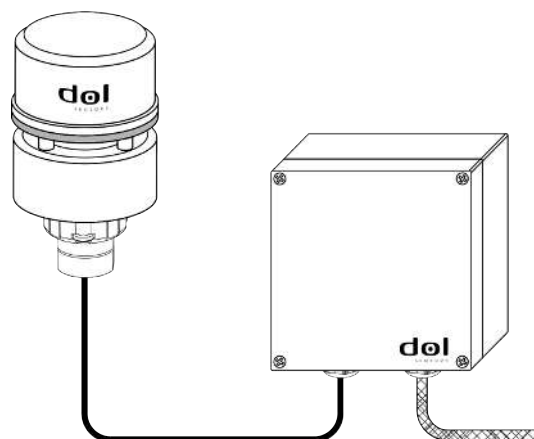


# DOL 58

## Weather sensor



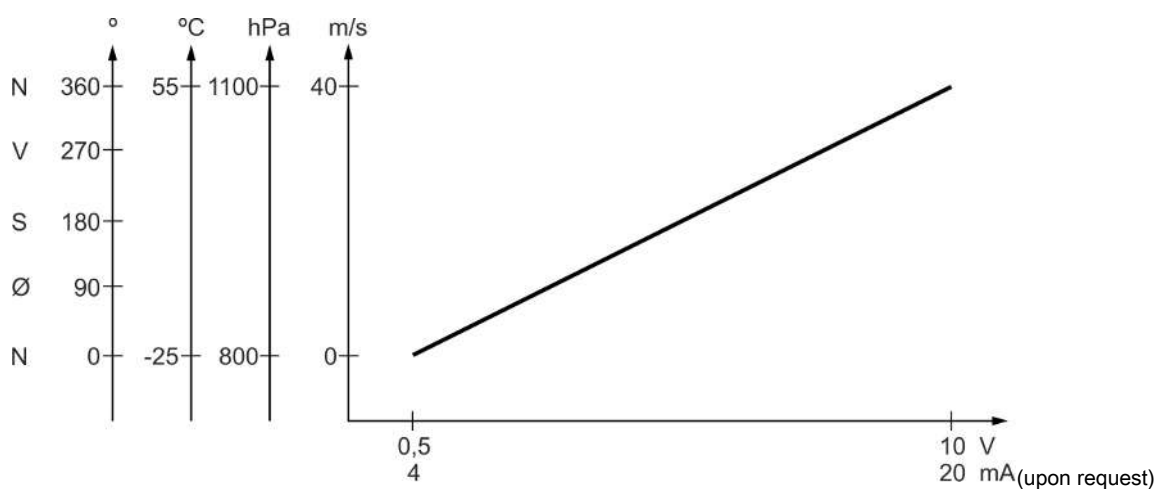
The DOL 58 measures wind direction, wind speed and air pressure/temperature (optional). Wind speed and direction are measured using ultrasound. The weather station thus has no movable parts, which means it is extremely reliable and has an exceptionally long lifetime.

DOL 58 includes:

- Weather sensor
- Connection box
- 5m/16feet 30m/98feet cable for connection between weather sensor and connection box
- Mounting bracket for the weather sensor

DOL 58's connection box has 3 analog outputs:

- Wind direction
- Wind speed
- Air pressure or temperature (supplied upon request)



Connection between weather measurement and the analog outputs.

## Product survey



### 140232 DOL 58 weather sensor

The DOL 58 measures wind direction, wind speed and air pressure/temperature (optional). Wind speed and direction are measured using ultrasound.

Can be used as an extra sensor.



### 140310 DOL 58 weather sensor 30 m cable

The DOL 58 measures wind direction, wind speed and air pressure/temperature (optional). Wind speed and direction are measured using ultrasound.

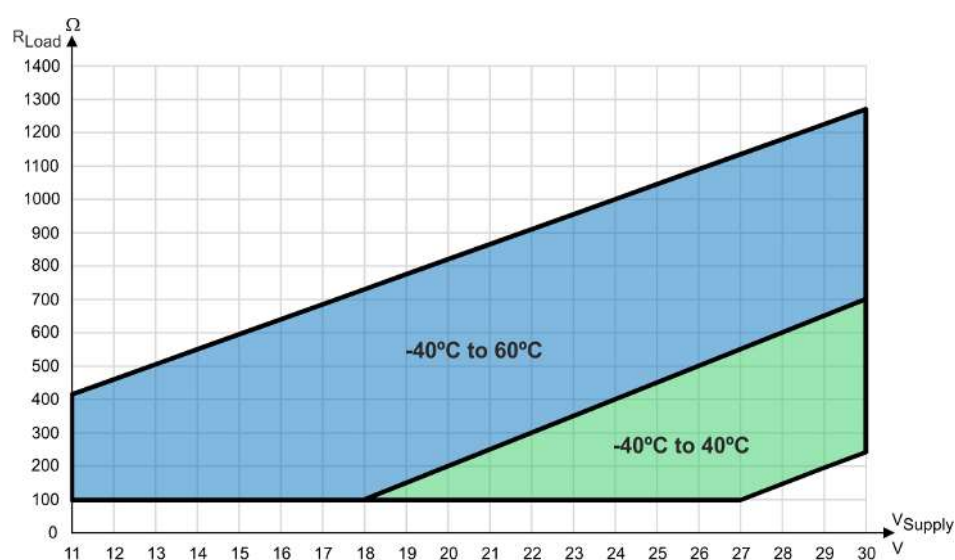
Can be used as an extra sensor.

## Technical data

Input measuring range				Voltage output		Current output	
Wind speed at 0-55 °C	Measuring range	0 - 40	m/s	0.5 - 10	VDC	4 - 20	mA
	Resolution	0.05	m/s	11.88	mVDC	20.00	µA
	Accuracy	0 - 5m/s: 0.50 + 10% of reading	m/s	0 - 5m/s: 11.88 or 10% of reading	mVDC	0 - 5m/s: 200 or 10% of reading	µA
		5 - 40m/s: 1.00 or 5% of reading	m/s	5 - 40m/s: 23.75 or 5% of reading	mVDC	5 - 40m/s: 400 or 5% of reading	µA
Wind direction at 0-55 °C	Measuring range	0 - 360		0.5 - 10	VDC	4 - 20	mA
	Resolution	0.1		2.63	mVDC	4.44	µA
	Accuracy	2 – 5m/s: 5.00		2 – 5m/s: 131.66	mVDC	2 – 5m/s: 222.22	µA
		>5 m/s: 2.00		>5 m/s: 52.67	mVDC	>5 m/s: 88.89	µA
Barometric pressure	Measuring range	800 - 1100	hPa	0.5 – 10	VDC	4 - 20	mA
	Resolution	0.1	hPa	3.17	mVDC	5.33	µA
	Accuracy	+/- 1.00	hPa	+/- 31.67	mVDC	+/- 53.33	µA
Air temperature	Measuring range	-25 - 55	°C	0.5 - 10	VDC	4 - 20	mA
	Resolution	0.1	°C	11.88	mVDC	20.00	µA

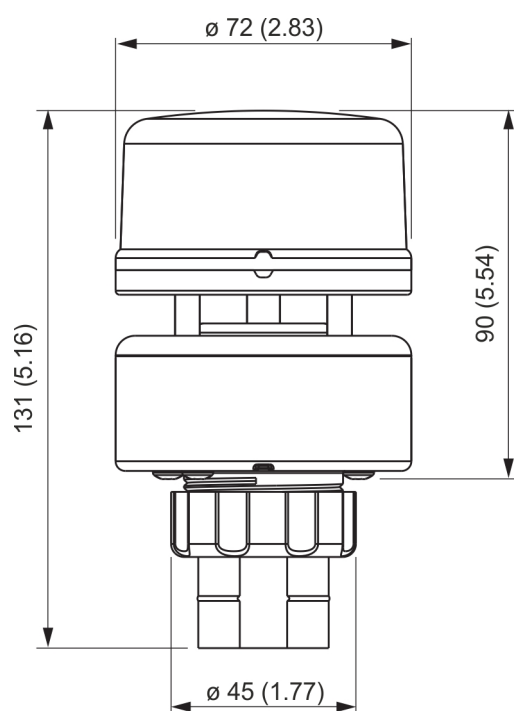
Input measuring range				Voltage output		Current output	
	Accuracy	>2 m/s: +/- 1.1	°C	>2m/s: +/- 130.63	mVDC	>2m/s: +/- 220.00	µA
Load				500Ω - 10MΩ Recommended load ≥ 100 kΩ		See graph	
Output imped- ance				<1Ω		n/a	
Output current				<20mA per output (current limited)		n/a	
Max. Cable length at 0.75mm <sup>2</sup>				100	m	500	m
Max. Cable length at 1.50mm <sup>2</sup>				200	m	500	m
Common							
Supply	Voltage	VDC	11 - 30				
	Current	mA	@ 12 V DC Typ. 70mA, max. 130 @ 24 V DC Typ. 50mA, max. 110				
Temperature, operation	°C	-25 - 55					
Shipping weight	kg	1.9					
Shipping dimen- sions	mm	380 x 185 x 165					
Protection class	IP	Interface box: 65 Weather sensor X6 (Relative humidity/X4)					
Approval		CE					
Mounting	Mast outer diameter Ø 30 to 46 mm (1.18" to 1.81")						

When the wind speed is less than 2 m/s and the temperature is below 0 °C, the readings will be less accurate.

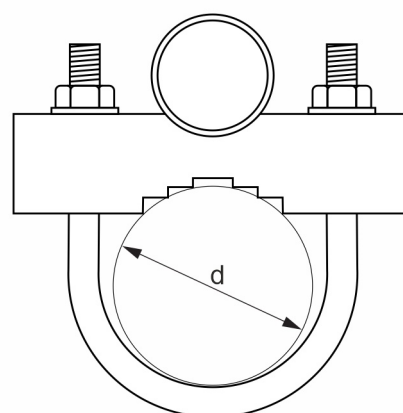
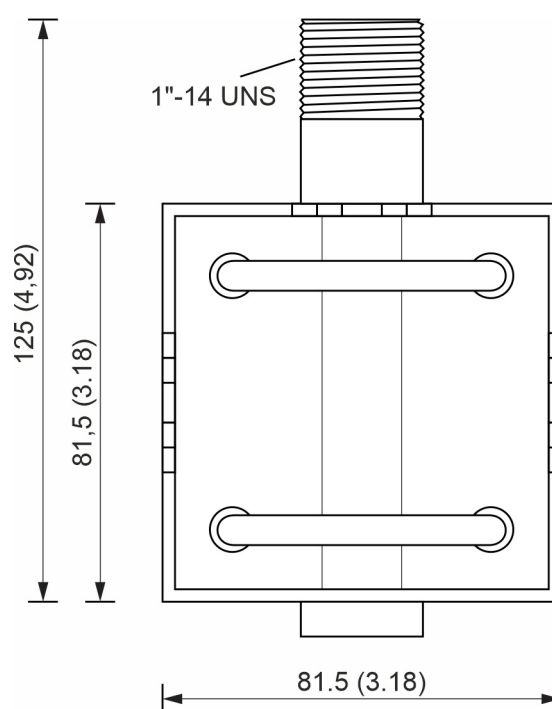


Load resistance and supply voltage.

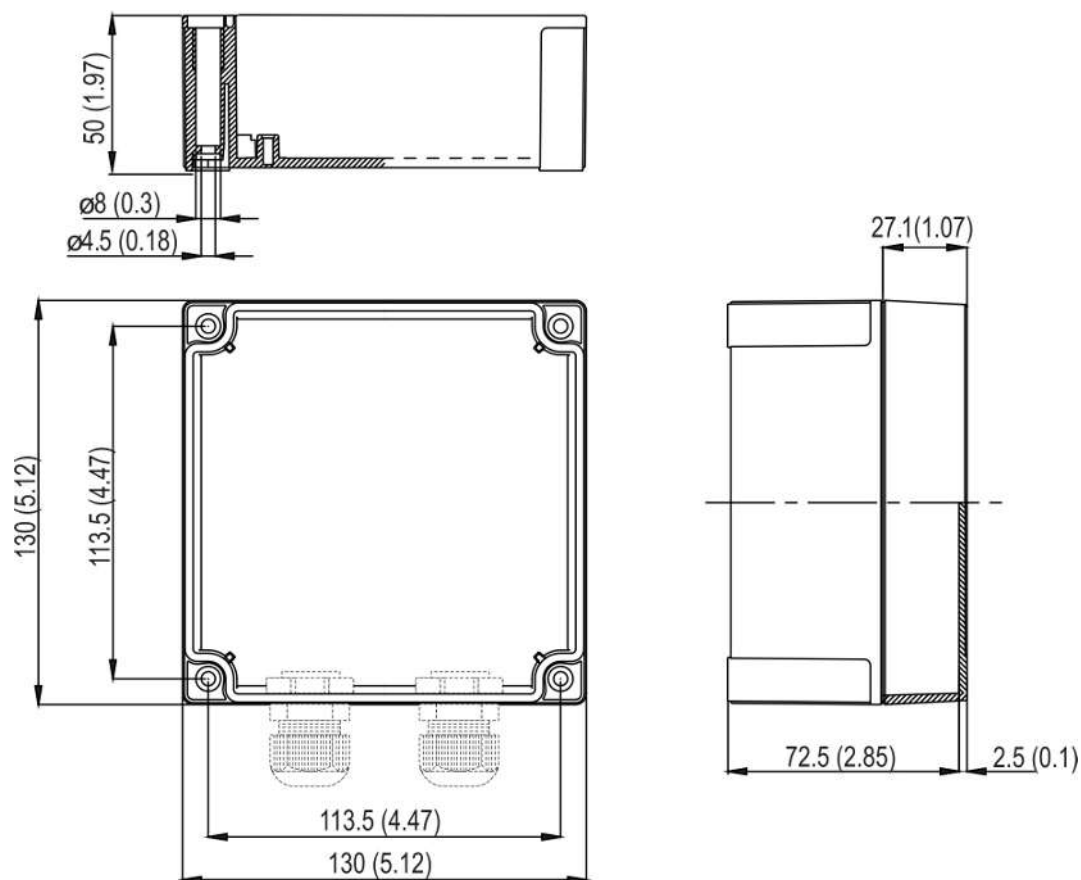
## Dimensions



Sensor dimensions mm (inches).



Mounting bracket dimensions mm (inches).



Interface box dimensions.

