

# DOL 27 capacitive proximity sensor

30 mm sensor for detecting loose and solid materials in e.g. feed pans or silos.

## Capacitive Sensor for Agriculture and Industry

DOL 27 is a 30 mm capacitive proximity sensor designed for detecting loose and solid materials. The sensor has highly unique functionalities for the agricultural and industrial industry. LED lights indicate the status of the sensors.

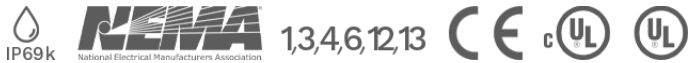
## Immune to EMI, short circuits, and any overload

The DOL 27 sensor is immune to EMI, short circuits, and any overload which prevents sensors from burning off due to installation mistakes. The sensor has IP69k and NEMA 1/3/4/6/12/13 environment protection.

## Low power consumption

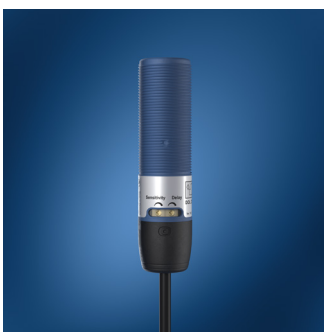
The sensor has very low power consumption in off state, enabling the possibility for sensors working in parallel on the same contactor. This gives the sensors a unique possibility for controlling cross auger systems.

## Certifications



## Variants

DOL 27 comes in different variants for different needs. All variants come with 2 or 0 trimmers as well as in iDOL variants with NFC for adjustment in the SmartAdjust App. DOL 27 is available with threaded and smooth housing. The SCR SE series is specifically designed for applications where multiple sensors are connected in series, enabling smarter control, improved safety, and reduced system complexity.



DOL 27 Threaded



iDOL 27 Threaded



iDOL 27 Smooth

## Outputs

DOL 27 is available with 2-wire version for SCR output or 4-wire version for NPN and PNP output.



2-wire SCR



4-wire NPN and PNP