

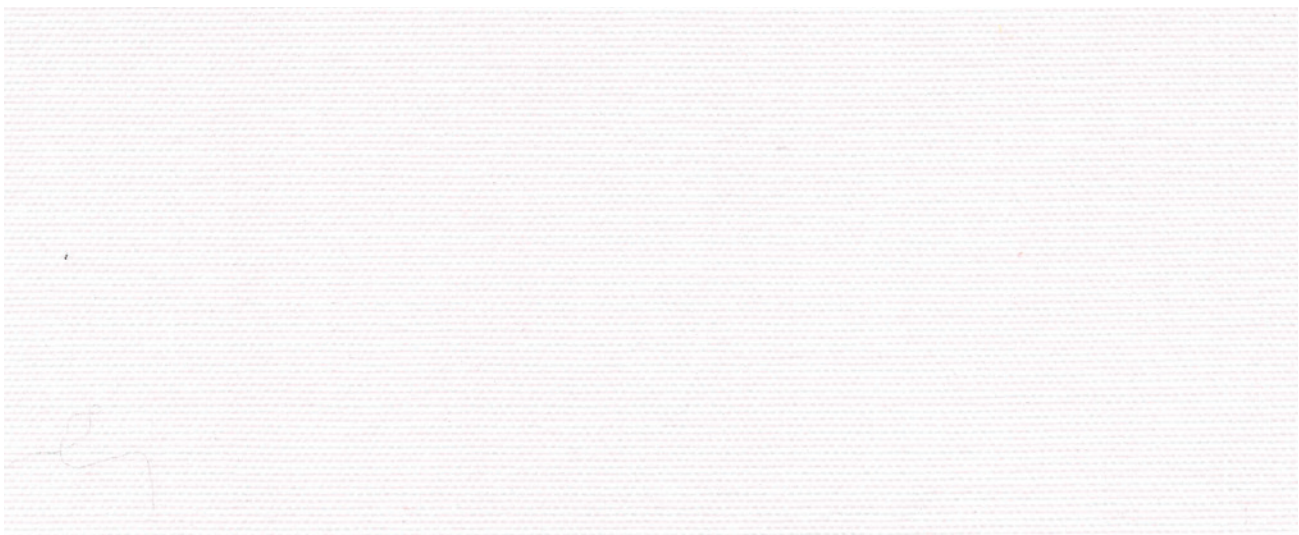
PANAMA





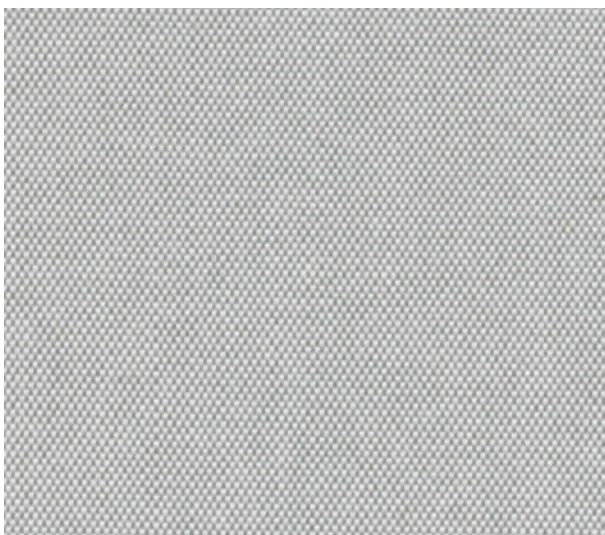

PANAMA

321 PANAMA



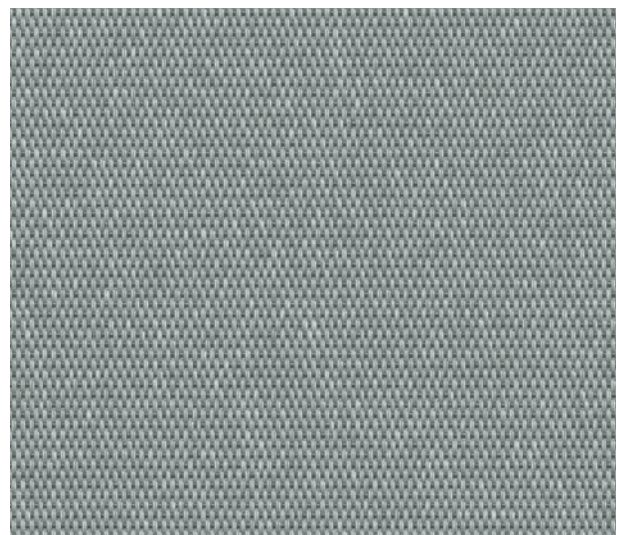
321 010

UV 60



321 030

UV 60



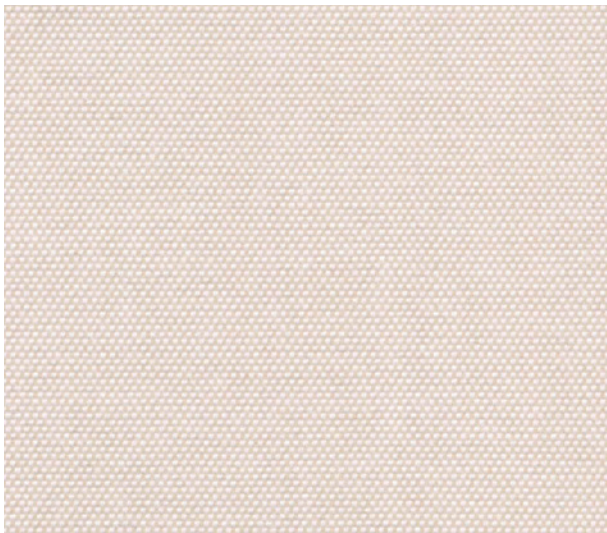
321 D87*

UV 80



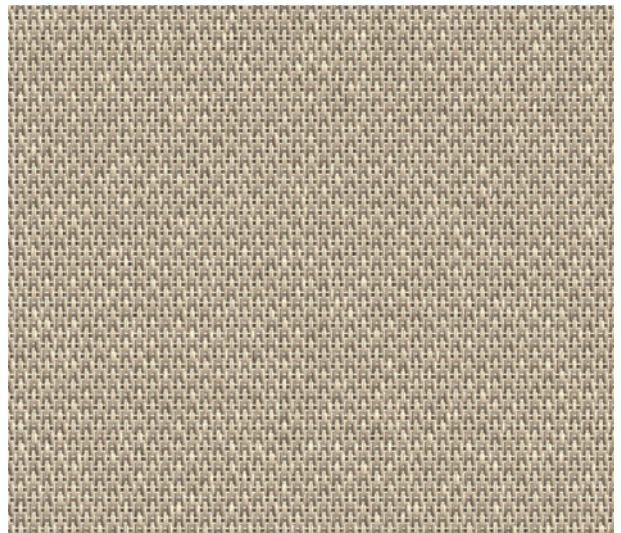
STANDARD
100

63864
OETI



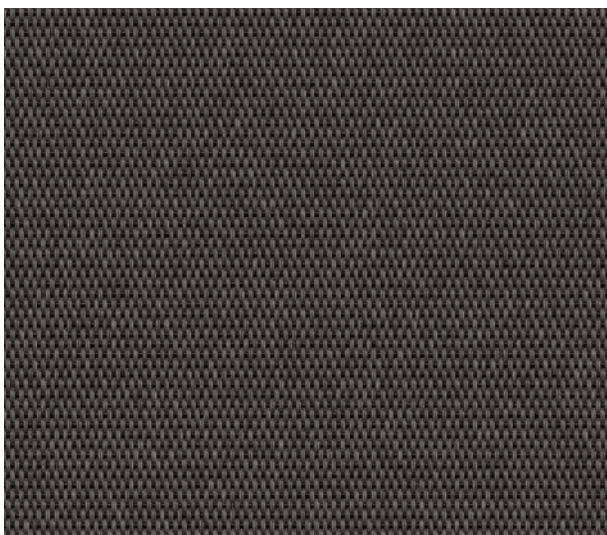
321 325

UV 60



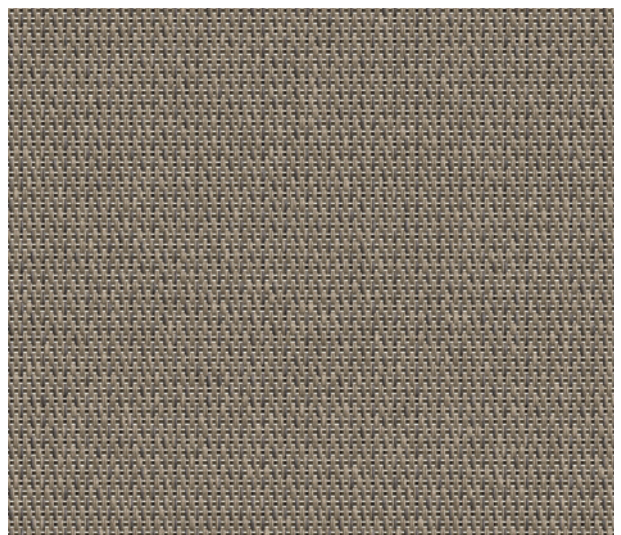
321 780

UV 80



321 398

UV 80



321 083












UV 80

FACTS

321 PANAMA

Anwendungen



| | | |
|--|--|--------------------|
|  | 100 % SDA | DIN 60 001 |
|  | 370 g/m ² | DIN EN 12127 |
|  | Note: 100 | EN ISO 4920 |
|  | 460 mm | DIN EN ISO 811 |
|  | P 2/2 | DIN ISO 9354 |
|  | 170 daN/5 cm | DIN EN ISO 13934-1 |
|  | 150 daN/5 cm | DIN EN ISO 13934-1 |
|  | ● min. 7/8 ● min. 4-5/5 | DIN EN ISO 105-B04 |
|  | 120 cm | |
|  | ● min. 7/8 | DIN EN ISO 105-B02 |
|  | Konformitätserklärung | |



REINIGUNG & PFLEGE



ZEICHENERKLÄRUNG