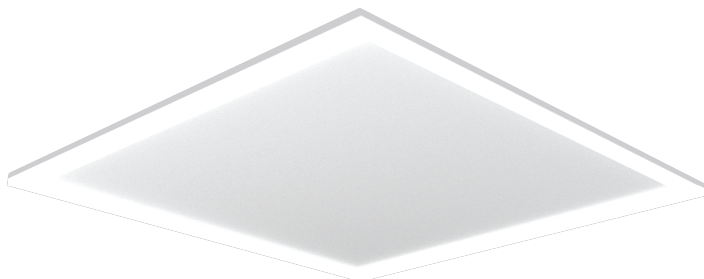


Product	
Catalog No.	
Fixture Type	Notes



SR201 LED FRAME PANEL

The SR201 LED Frame Light is a modern recessed and suspended lighting solution with selectable wattage and color temperature. It provides high lumen output with excellent efficiency, achieving up to 125 lm/W. Designed with advanced optical technology, SR201 ensures uniform and comfortable illumination for offices, schools, retail, and residential spaces. With ETL and DLC Premium certifications, durable construction, and 0-10V dimming, SR201 combines energy savings with long-term reliability.

SPECIFICATION SUMMARY

Category	Specification	Data
Category Performance	Wattage	2x2: 20W / 30W / 40W (Selectable) 2x4: 40W / 50W / 60W (Selectable)
	Delivered Lumens	2,500 ~ 7,500lm
	Lumen Efficacy	~125lm/W
	Color Temperature	3000/3500/4000/5000/6500K (Selectable)
	CRI (Ra)	80+
Electrical	Input Voltage	AC120-277V
	Dimming	0-10V
	Power Factor	>0.95
Physical	Housing	Aluminum
	Lens Option	Milky lens, Clear lens, No lens
	Operation Temperature	-4°F ~ 113°F
	IP Rating	IP 40
	Mounting Options	Recessed (T-bar), Suspended
	Dimensions	2X2: 23.75"x23.75"x0.6" 2X4: 47.76"x23.75"x0.6"

APPLICATIONS

- Office
- Meeting Room
- Retail
- Hospitality
- Schools
- Hospital
- Hallways

FEATURES

- Wattage & CCT selectable
- High efficacy up to 125 lm/W
- 0-10V dimming
- Advanced optical technology
- Damp location rated

LIFESPAN AND WARRANTY

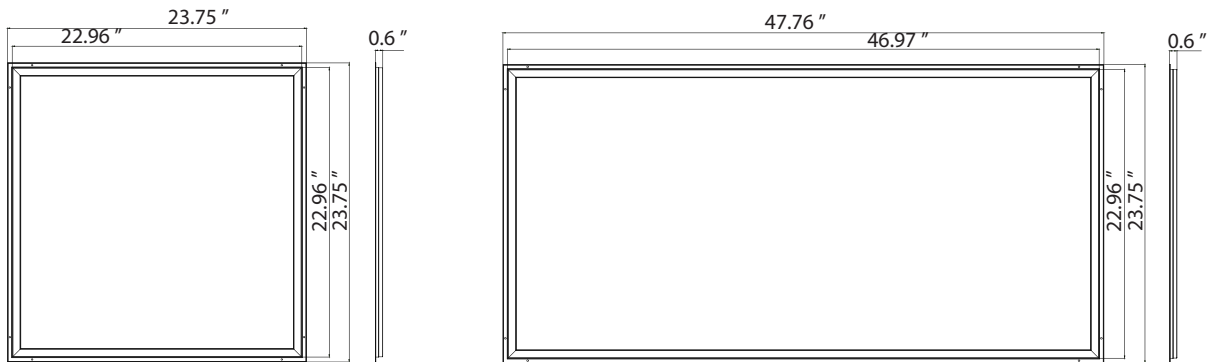
Rated Life	50,000 Hrs
Warranty	5 Years
Certification	ETL

CERTIFICATION



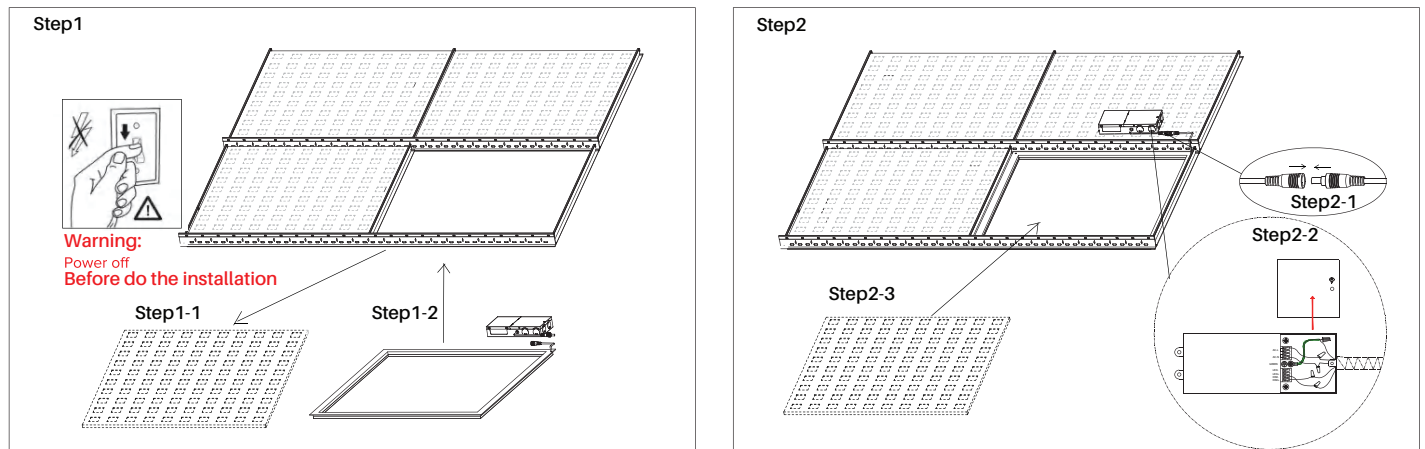
SR201 LED FRAME PANEL

DIMENSION

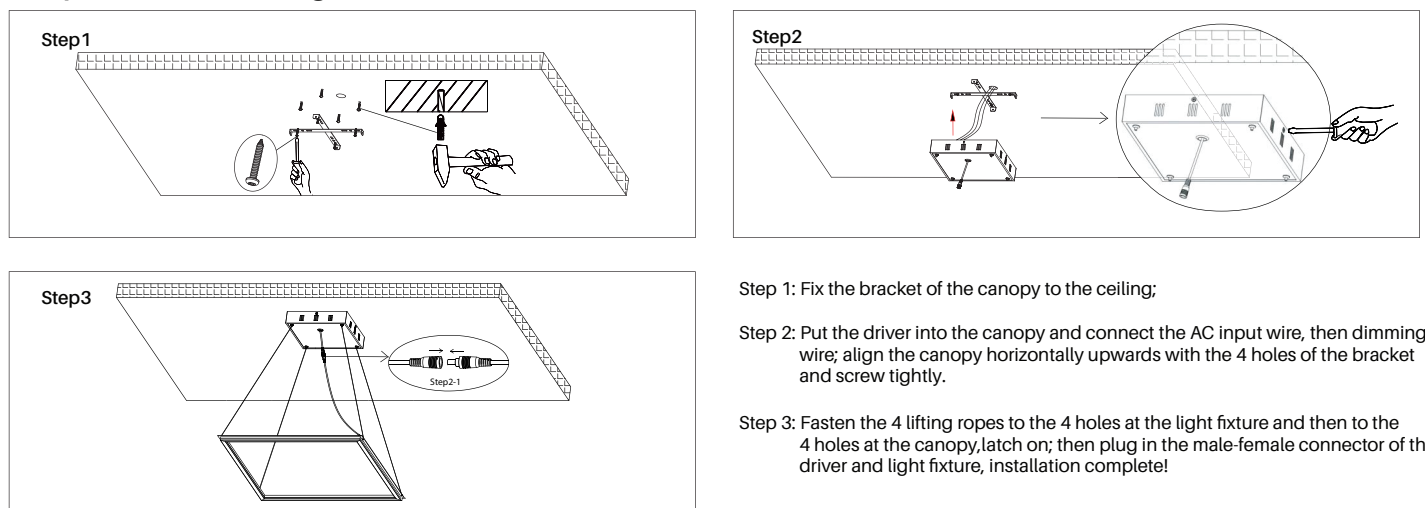


INSTALLATION

Recessed Mounting



Suspended mounting

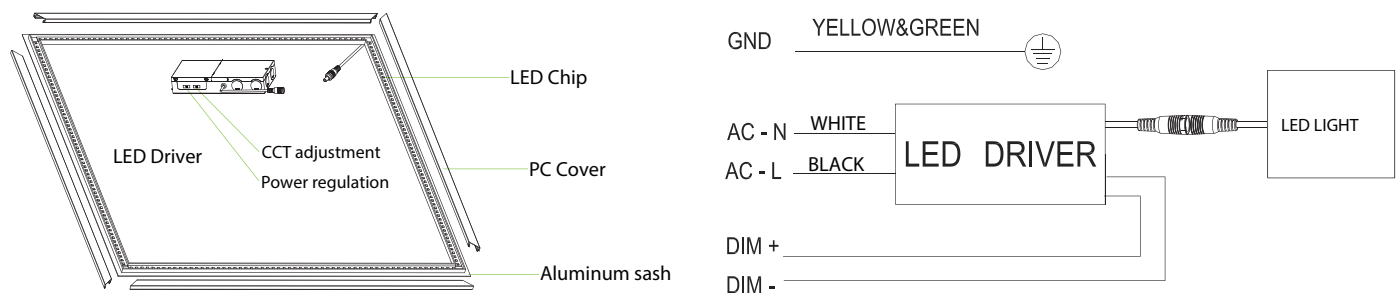


Warning:

Make sure all the power is off before installation. All the installations are required to be done by professionals.

SR201 LED FRAME PANEL

WIRING DIAGRAM



PERFORMANCE DATA

2x2	PRODUCT CODE	WATTS	lm/W	DELIVERED LUMENS	INPUT VOLTAGE	CRI (Ra)	CCT
	SR201	20/30/40W (Selectable)	~125lm/W	2,500-5,000	AC120-277V	80+	3000/3500/4000/5000/6500K (Selectable)

2x4	PRODUCT CODE	WATTS	lm/W	DELIVERED LUMENS	INPUT VOLTAGE	CRI (Ra)	CCT
	SR201	40/50/60W (Selectable)	~125lm/W	5,000-7,500	AC120-277V	80+	3000/3500/4000/5000/6500K (Selectable)

ORDERING INFORMATION

SR201					
-------	--	--	--	--	--

Series SKU	Size	Wattage	Dimming	Input Voltage	CCT
SR201	22: 2'x2'	040: 20/30/40W (Selectable)	DV: 0-10V Dim	U: 120-277V	CT: CCT Selectable (3000K / 3500K / 4000K / 5000K / 6500K)
	24: 2'x4'	060: 40/50/60W (Selectable)			

Example: SR201-22040DVU-CT
Lead times will vary depending on options selected.
Consult with your sales representative.

MISCELLANEOUS

CONSTRUCTION:
INSTALLATION:
OPTICS:
LISTINGS:
ELECTRICAL:
GOVERNMENT PROCUREMENT:

NOTE