



FL745 FLOOD LIGHT

The FL745 LED Flood Light is available in two sizes with wattage packages ranging from 75W to 300W, making it suitable for a wide range of applications. The FL745 features field-adjustable color temperature and wattage, along with smart control options like a built-in photocell. Multiple mounting options — including slipfitter, yoke, and wall mount — provide flexible installation.

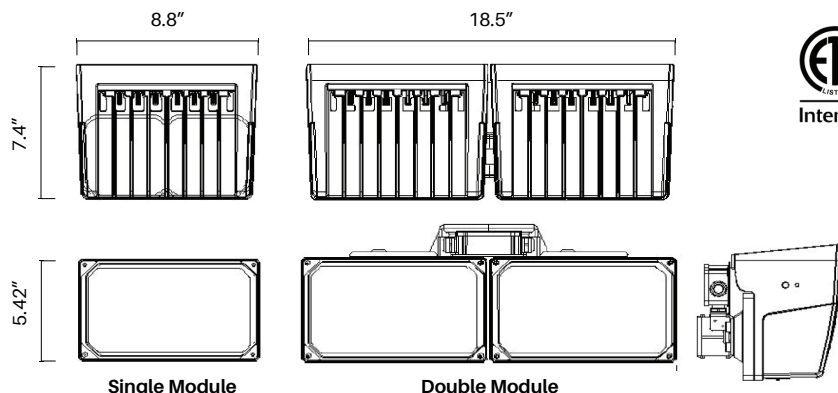
APPLICATIONS

- Outdoor parking lot
- High pole square
- Building local
- Building external area

FEATURES

- 75W, 100W, 120W, 150W, 200W, 240W, 300W are available
- 3CCT&4powerselectable
- Slipfitter mount or yoke mount options or trunnion mount options
- 150LM/W, IP66, IK08, CRI70/80
- 5-year warranty

DIMENSIONS



Product	
Catalog No.	
Fixture Type	Notes

SPECIFICATION SUMMARY

Category	Specification	Data
Category Performance	Wattage	75/100/120/150/200/240/300W
	Delivered Lumens	11,250 - 45,000lm
	Lumen Efficacy	150lm/W
	Color Temperature	3000/4000/5000K (Selectable)
	CRI (Ra)	70+ / 80+
Electrical	Input Voltage	AC120-277V
	Dimming	0-10V
	Power Factor	0.9
Physical	Housing	Aluminum
	IP Rating	IP66
	IK Rating	IK08
	Beam Angle	120°
	Operation Temperature	-22°F to 113°F
	Mounting Options	Ceiling
	Dimensions	8.8(18.5)"x7.4"x5.6(7.3)"

LIFESPAN AND WARRANTY

Rated Life	50,000 Hrs
Warranty	5 Years
Certification	UL, cUL, FCC

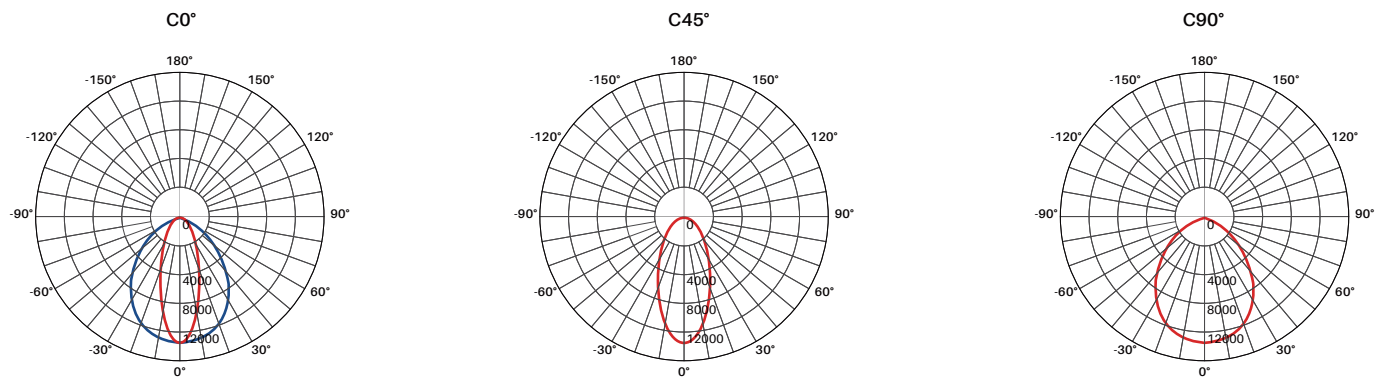
CERTIFICATION



FL745 FLOOD LIGHT

PHOTOMETRY

FL745-100DVU



Distribution Curve
C-plane — C0/180 — C90/270

Category	Details (C0°)
Luminous Flux	15,030 lumens
Luminous Efficacy	150.3lm/W
Power Consumption	100W
Peak Intensity	12,630 cd
Light Distribution	Symmetric, directional downward
Beam Spread Pattern	Oval-shaped
CCT (Color Temp.)	4,000K
Recommended Height	13–30 ft

PERFORMANCE DATA

PRODUCT CODE	WATTS	lm/W	DELIVERED LUMENS	INPUT VOLTAGE	CRI (Ra)	CCT
FL745	75	150	11,250	AC120-277V	80	3,000/4,000/5,000K (Selectable)
FL745	100	150	15,000	AC120-277V	80	3,000/4,000/5,000K (Selectable)
FL745	120	150	18,000	AC120-277V	80	3,000/4,000/5,000K (Selectable)
FL745	150	150	22,500	AC120-277V	80	3,000/4,000/5,000K (Selectable)
FL745	200	150	30,000	AC120-277V	80	3,000/4,000/5,000K (Selectable)
FL745	240	150	36,000	AC120-277V	80	3,000/4,000/5,000K (Selectable)
FL745	300	150	45,000	AC120-277V	80	3,000/4,000/5,000K (Selectable)

FL745 FLOOD LIGHT

MOUNTING OPTIONS

Single Module



Slipfitter



Wall Mount



Yoke Mount

Double Module



Slipfitter



Wall Mount



Yoke Mount

ACCESSORIES



NEMA socket



Photocell control



Shorting cap



Wall Mount



Slipfitter(with Ø2.4" sleeve)



Slipfitter(with Ø3" sleeve)



Yoke Mount



Yoke Mount(For double module)

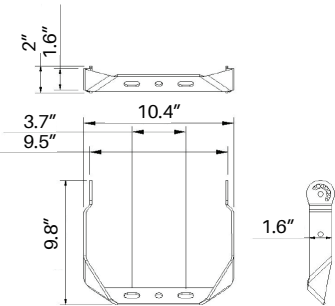
FL745 FLOOD LIGHT

ORDERING INFORMATION

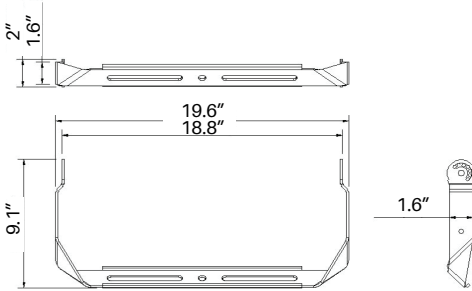
FL745							
Series SKU	Wattage	Dimming	CRI	Voltage	CCT	Mounting (Optional)	Accessories (Optional)
FL745	075: 75W 100: 100W 120: 120W 150: 150W 200: 200W 240: 240W 300: 300W	DV: 0-10V Dim * Leave blank if not specified	L: 70 M: 80	U: 120-277V	CT: CCT Selectable 3,000/4,000/5,000K	WM: Wall Mount YM: Yoke Mount SF: Slipfitter	NS: Nema Socket PC: Photocell Control SC: Shorting Cap

Example: FL745-075DVLU-CTWMPC
Lead times will vary depending on options selected.
Consult with your sales representative.

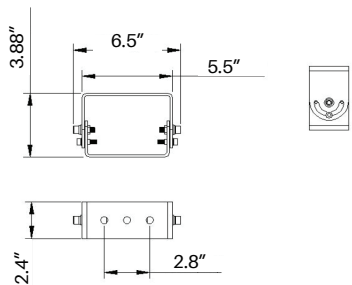
ACCESSORIES DIMENSIONS



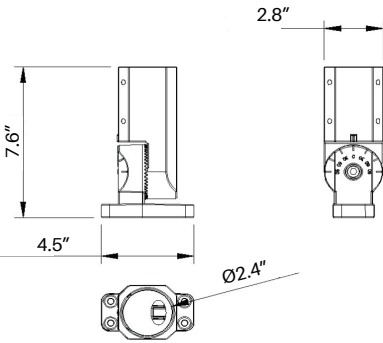
Single module Yoke Mount



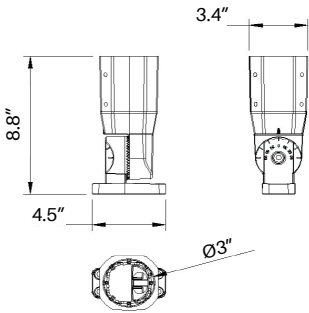
Double module Yoke Mount



Wall Mount



Ø2.4" Slipfitter (For single module)



Ø3" Slipfitter (For double module)

MISCELLANEOUS

CONSTRUCTION:
INSTALLATION:
OPTICS:
LISTINGS:
ELECTRICAL:
GOVERNMENT PROCUREMENT:

NOTE