

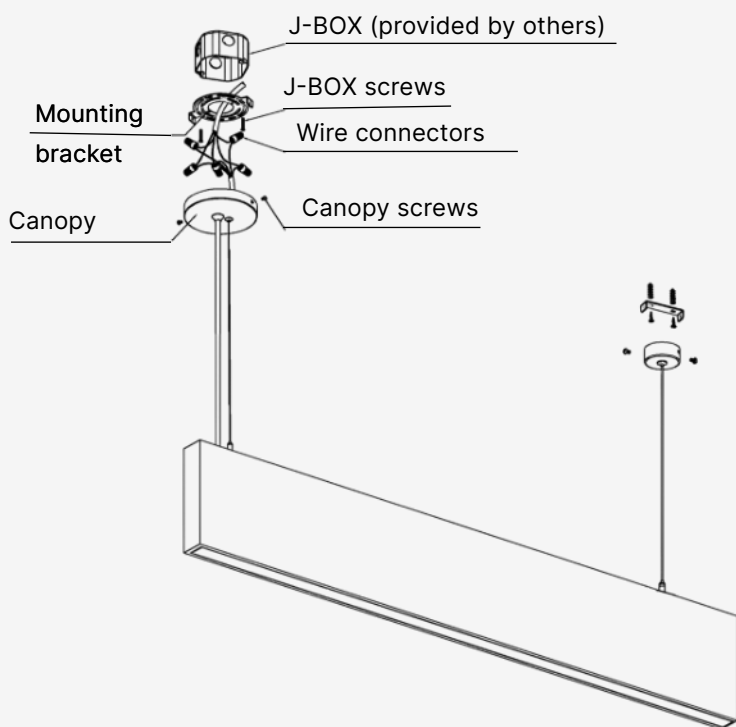
IMPORTANT: Carefully read all instructions before installing the fixture. Ignoring these guidelines could result in death, severe injury, or significant property damage. Keep these instructions for future use.

⚠ WARNING! RISK OF FIRE, ELECTRIC SHOCK, OR SERIOUS INJURY

Installation must be performed by a qualified electrician in accordance with the National Electrical Code (NEC) and local regulations.

- Always disconnect power at the circuit breaker before starting work.
- CAUTION – Risk of Fire: Do not install or operate near flammable materials. Do not cover the fixture with any combustible materials.
- Use minimum 90°C rated supply conductors.
- Confirm voltage compatibility before connection.
- Operating temperature range: -20°C to +40°C. Relative humidity must remain between 0% and 95%. Operation outside these conditions may reduce product lifespan.
- Do not tamper with sealed LED components or touch LEDs with bare hands.
- Avoid circuits shared with HVAC or motorized equipment to prevent surges.
- In the event of failure, the driver or transformer may be replaced with a manufacturer-approved equivalent. The use of non-approved replacements is prohibited and will void the warranty.
- Connect fixtures in parallel only; do not daisy-chain.
- Use only UL-listed connectors appropriate for the environment (wet/dry).
- Ensure the mounting surface is level, stable, and structurally adequate.

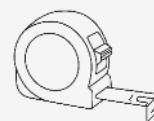
INSTALLATION DIAGRAM



Tools You May Need



Glasses



Measuring tape



Rubber gloves



Screwdriver



Drill



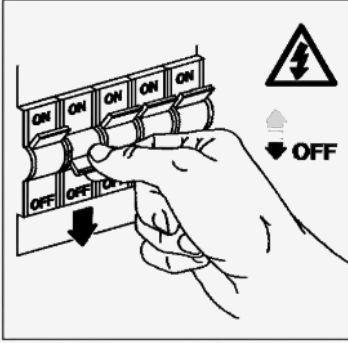
Ladder

CERTIFICATION



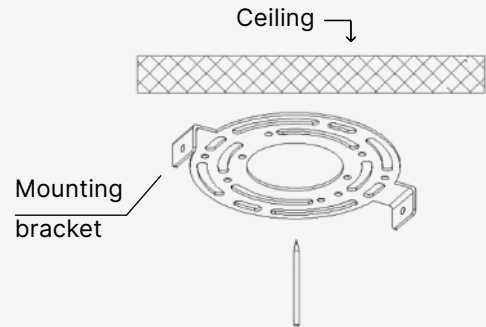
Step 1

Turn OFF the power at the main fuse box. Ensure the wall switch in the room where the fixture is being installed is also in the OFF position.



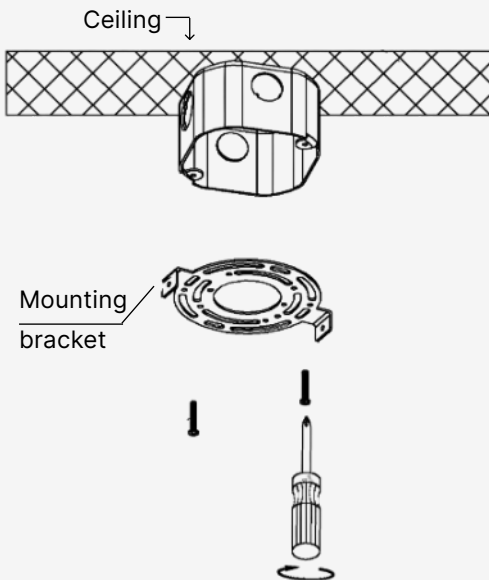
Step 2

Mark and drill the holes in the ceiling according to the layout of the linear hanging kits.



Step 3

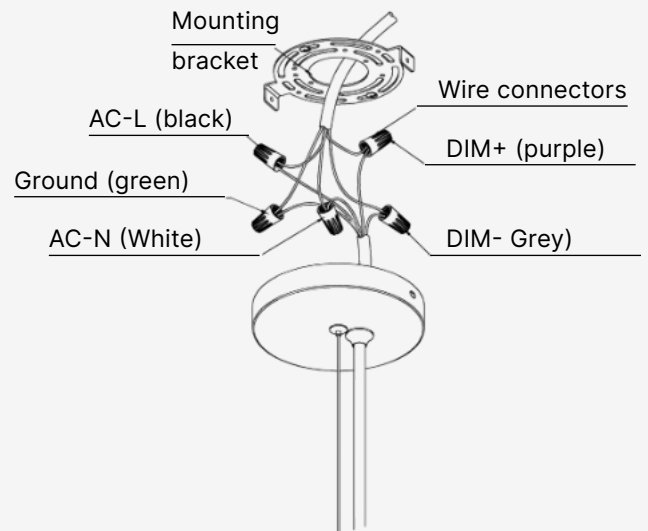
Take out the plastic anchors. Drill four holes (Ø8mm) in the ceiling in alignment with the mounting bracket. Insert the plastic anchors into the holes. Using two J-BOX screws, secure the mounting bracket to the J-BOX, as shown in the diagram below. Note: J-BOX should be Garvin 54171-S or equivalent (provided by others).



Step 4

Use wire connectors to connect the L (Live), N (Neutral), G (Ground), DIM+, and DIM- wires.

After completing the connections, neatly place all wires and connectors inside the J-BOX.

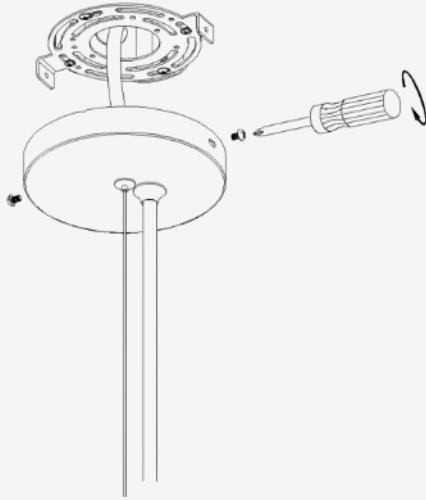


CERTIFICATION



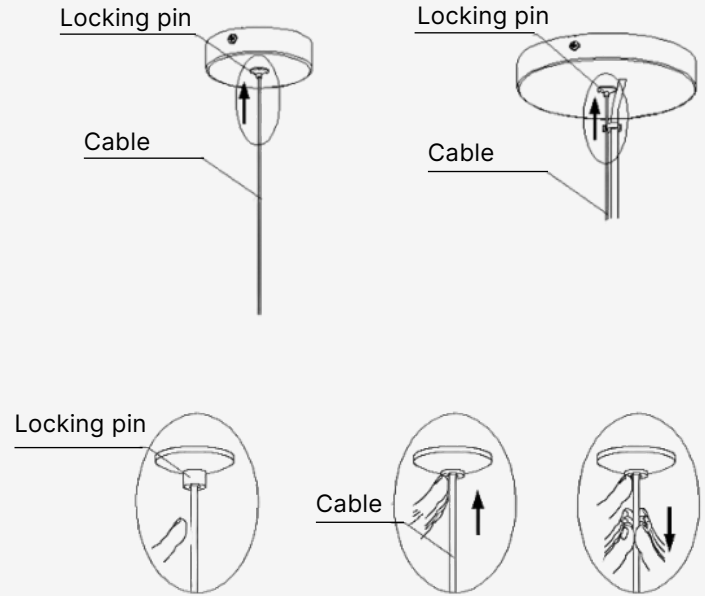
Step 5

Secure the mounting canopy and ceiling plate from the side using the Canopy Screws.



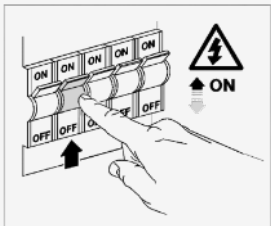
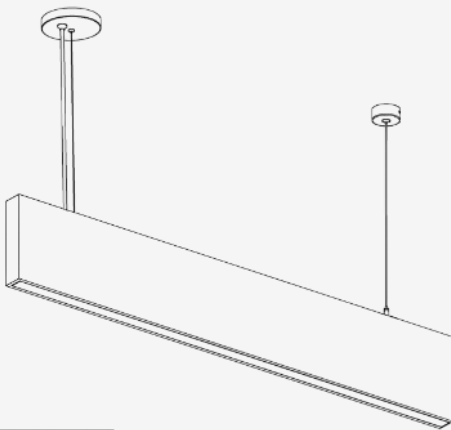
Step 6

Adjust the length of the safety cable according to the reference images below.



Step 7

Once installation is complete, turn the power ON at the main fuse box. The fixture should now operate properly.



CERTIFICATION

