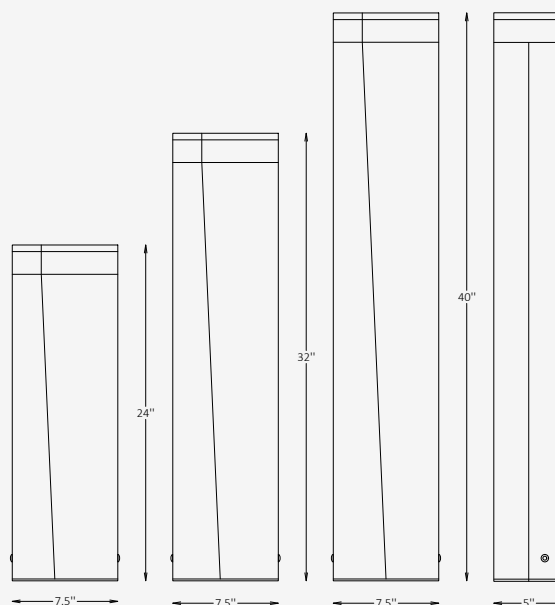




## GENERAL INFORMATION

The SLYTE is a contemporary architectural bollard defined by its sculpted asymmetrical form and warm, forward-projected illumination, creating both visual elegance and refined pathway guidance. Crafted from extruded aluminum with a recessed light chamber, it delivers controlled Type III forward-asymmetric distribution ideal for landscapes, entryways, and pedestrian environments. With multiple heights, color temperatures, and finish options, SLYTE offers a versatile, design-driven solution for exterior spaces seeking a balance of aesthetics, performance, and durability.



## SPECIFICATIONS

Material	Extruded Aluminum
Lens	PMMA
Height	24" / 32" / 40"
Length	7.5"
Width	5"
Light Source Type	LED
Power	9W / 18W / 25W
Input Voltage	110-277V, 50-60 Hz
LED Output	90 lm/W
CCT	2700K / 3000K / 4000K / 5000K
CRI	90
Dimming & Driver	Integral, 0-10V
Light Distribution	Type III, Forward Asymmetric
IP Rating	IP 65
Warranty	5 years
Finishes	16 standard finishes 8 wood-effect finishes 12 metallic finishes Custom on request*

## OTHER VERSIONS AVAILABLE



## CERTIFICATION



## Ordering Information

Select one item from each category below. If your desired option is unavailable, please contact our team for support or custom solutions.

Code	Height	Material	CCT
<input checked="" type="checkbox"/> <b>SLT</b> Bollard	<input type="checkbox"/> <b>24</b> 24"	<input type="checkbox"/> <b>AL</b> Extruded Aluminum	<input type="checkbox"/> <b>27</b> 2700K
	<input type="checkbox"/> <b>32</b> 32"	<input type="checkbox"/> <b>Cus</b> Custom on request	<input type="checkbox"/> <b>30</b> 3000K
	<input type="checkbox"/> <b>40</b> 40"		<input type="checkbox"/> <b>40</b> 4000K
	<input type="checkbox"/> <b>Cus</b> Custom on request		<input type="checkbox"/> <b>50</b> 5000K
Wattage / Lumens	Light Distribution	Dimming	Inside Panel Finish Option
<input type="checkbox"/> <b>8</b> 9 W / 810 lm	<input checked="" type="checkbox"/> <b>LD3</b> Type III	<input type="checkbox"/> <b>NN</b> Non-Dimmable	<input type="checkbox"/> <b>ST</b> Standard
<input type="checkbox"/> <b>16</b> 18 W / 1620 lm	Forward Asymmetric	<input type="checkbox"/> <b>DM</b> 0-10V	<input type="checkbox"/> <b>WE</b> Wood effect
<input type="checkbox"/> <b>22</b> 25 W / 2250 lm			<input type="checkbox"/> <b>MC</b> Metallic
<input type="checkbox"/> <b>Cus</b> Custom on request			<input type="checkbox"/> <b>Cus</b> Custom on request
Main Body Finish Option	Mounting		
<input type="checkbox"/> <b>ST</b> Standard	<input checked="" type="checkbox"/> <b>AB</b> Anchored Base		
<input type="checkbox"/> <b>WE</b> Wood effect			
<input type="checkbox"/> <b>MC</b> Metallic			
<input type="checkbox"/> <b>Cus</b> Custom on request			

## Finishes

### Standard finishes

RAL 7004	RAL 7005	RAL 9022	RAL 9023	RAL 9005	RAL 8029	RAL 8015	RAL 8017	RAL 8028	RAL 6013	RAL 6011	RAL 6003
RAL 6006	RAL 9003	RAL 9010	RAL 9016								

**RAL K7 CLASSIC COLORS**  
(80-95% GLOSS): RAL\_ \_ \_ \_

All RAL Classic colors are available with no setup fee.

On your specification submittal, choose your RAL color by entering the 4-digit RAL code (e.g., RAL 3003).



### Wood-effect finishes

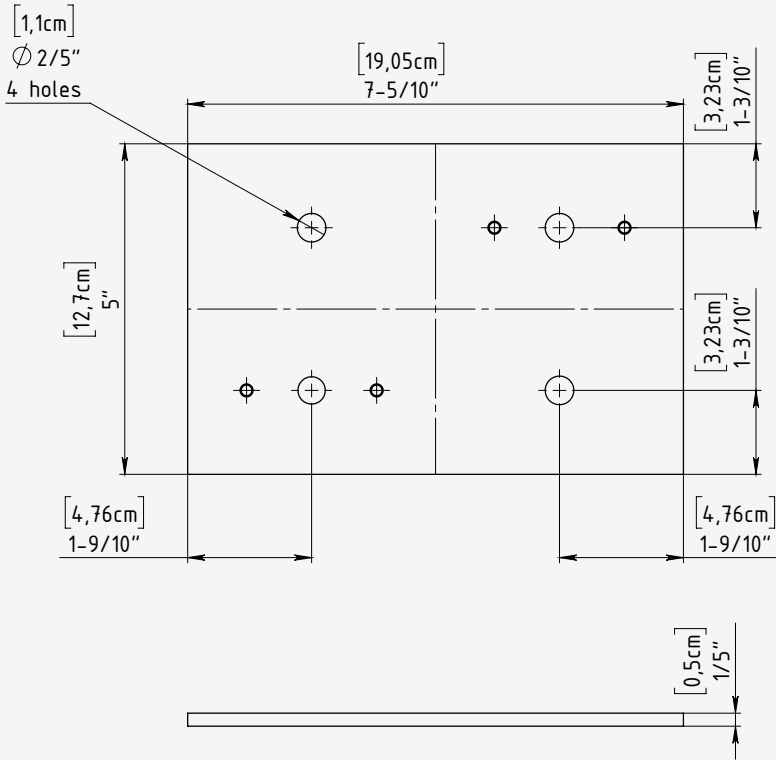
WO WHITE OAK	OA OAK	HO HONEY OAK	MP MAPLE	WT WALNUT	MG MAHOGANY	DO DARK OAK	ES ESPRESSO

### Metallic finishes

001 SUNLIT GOLD	003 IMPERIAL GOLD	005 DESERT BRONZE	007 AMBER ALLOY	009 SIENNA BRONZE	014 REDWOOD GLOW	017 AGED CITRON	018 ARCTIC STEEL	019 CARAMEL BRASS	020 CEDAR FLAME	021 CHARRED OAK	023 OBSIDIAN STEEL

## Bolt Patterns

for Surface-mounted Installation



### Mounting Type

Surface-mounted

### Base Plate Material

Stainless Steel

### Bolt Mounting Circle

$\phi$ : 4-7/10"

### Number of Anchor Bolt

4 equally holes (90° apart)

### Bolt Size

1/4"-20 x 3 1/4"  
concrete anchor bolt

### Installation Notes:

- Use a manufacturer-supplied base plate to position anchor bolts accurately.
- Ensure bolts are embedded vertically and aligned to avoid fixture tilt.
- Grouting under the base plate is recommended for leveling and load distribution.
- Allow clearance for wiring through the center opening and access to bolt heads if concealed.