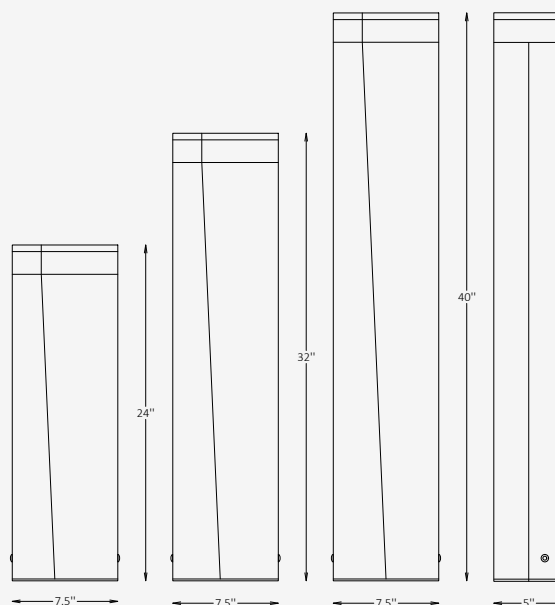




GENERAL INFORMATION

The SLYTE is a contemporary architectural bollard defined by its sculpted asymmetrical form and warm, forward-projected illumination, creating both visual elegance and refined pathway guidance. Crafted from extruded aluminum with a recessed light chamber, it delivers controlled Type III forward-asymmetric distribution ideal for landscapes, entryways, and pedestrian environments. With multiple heights, color temperatures, and finish options, SLYTE offers a versatile, design-driven solution for exterior spaces seeking a balance of aesthetics, performance, and durability.



SPECIFICATIONS

Material	Extruded Aluminum
Lens	PMMA
Height	24" / 32" / 40"
Length	7.5"
Width	5"
Light Source Type	LED
Power	9W / 18W / 25W
Input Voltage	110-277V, 50-60 Hz
LED Output	90 lm/W
CCT	2700K / 3000K / 4000K / 5000K
CRI	90
Dimming & Driver	Integral, 0-10V
Light Distribution	Type III, Forward Asymmetric
IP Rating	IP 65
Warranty	5 years
Finishes	16 standard finishes 8 wood-effect finishes 12 metallic finishes Custom on request*

OTHER VERSIONS AVAILABLE



CERTIFICATION



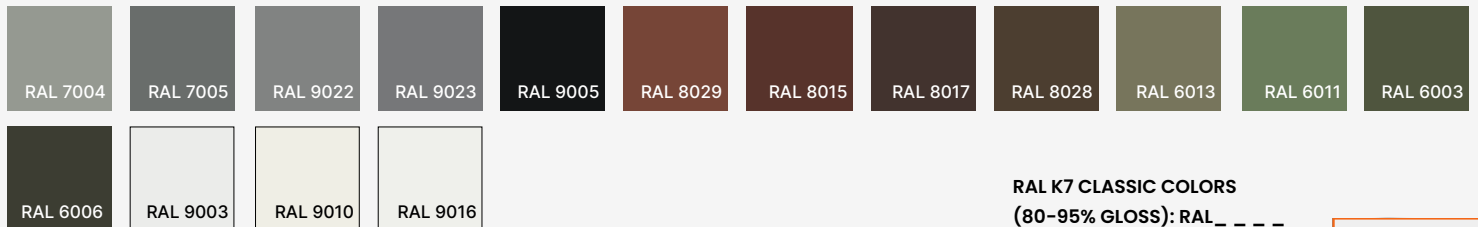
Ordering Information

Select one item from each category below. If your desired option is unavailable, please contact our team for support or custom solutions.

Code	Height	Material	CCT
<input checked="" type="checkbox"/> SLT Bollard	<input type="checkbox"/> 24 24" <input type="checkbox"/> 32 32" <input type="checkbox"/> 40 40" <input type="checkbox"/> Cus Custom on request	<input type="checkbox"/> AL Extruded Aluminum <input type="checkbox"/> Cus Custom on request	<input type="checkbox"/> 27 2700K <input type="checkbox"/> 30 3000K <input type="checkbox"/> 40 4000K <input type="checkbox"/> 50 5000K
Wattage / Lumens	Light Distribution	Dimming	Interior Panel Finish Option
<input type="checkbox"/> 8 9 W / 810 lm <input type="checkbox"/> 16 18 W / 1620 lm <input type="checkbox"/> 22 25 W / 2250 lm <input type="checkbox"/> Cus Custom on request	<input checked="" type="checkbox"/> LD3 Type III Forward Asymmetric	<input type="checkbox"/> NN Non-Dimmable <input type="checkbox"/> DM 0-10V	<input type="checkbox"/> ST Standard <input type="checkbox"/> WE Wood effect <input type="checkbox"/> MC Metallic <input type="checkbox"/> Cus Custom on request
Main Body Finish Option	Mounting		
<input type="checkbox"/> ST Standard <input type="checkbox"/> WE Wood effect <input type="checkbox"/> MC Metallic <input type="checkbox"/> Cus Custom on request	<input checked="" type="checkbox"/> AB Anchored Base		

Finishes

Standard finishes



RAL K7 CLASSIC COLORS
(80-95% GLOSS): RAL_ _ _ _

All RAL Classic colors are available with no setup fee.

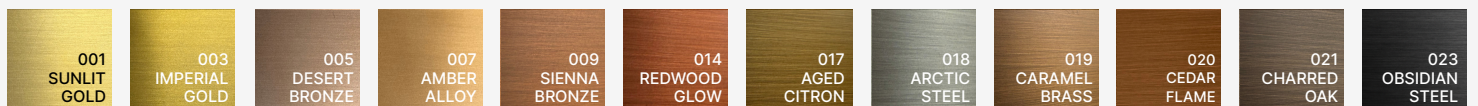
On your specification submittal, choose your RAL color by entering the 4-digit RAL code (e.g., RAL 3003).



Wood-effect finishes

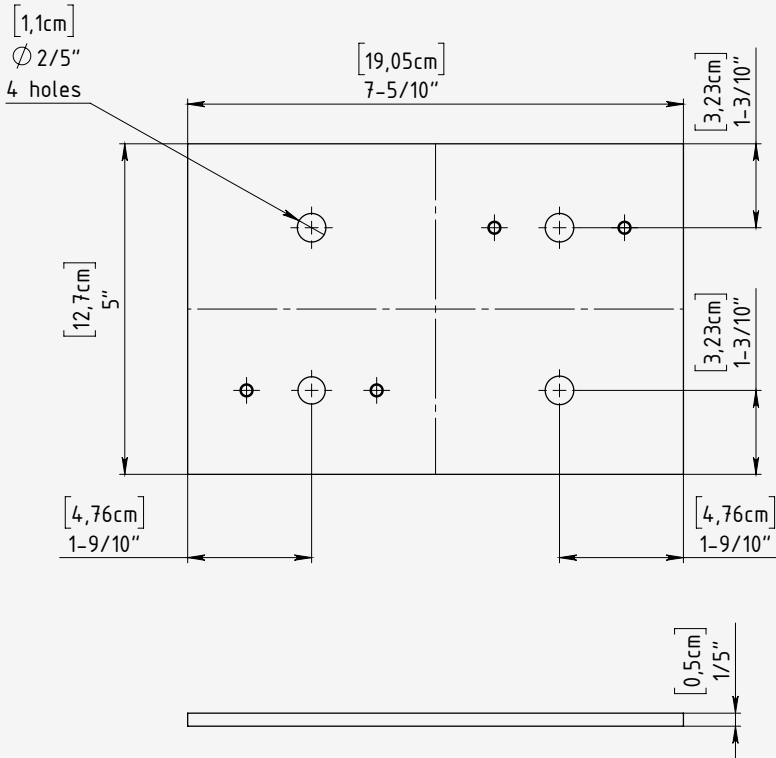


Metallic finishes



Bolt Patterns

for Surface-mounted Installation



Mounting Type

Surface-mounted

Base Plate Material

Stainless Steel

Bolt Mounting Circle

Ø: 4-7/10"

Number of Anchor Bolt

4 equally holes (90° apart)

Bolt Size

1/4"-20 x 3 1/4"
concrete anchor bolt

Installation Notes:

- Use a manufacturer-supplied base plate to position anchor bolts accurately.
- Ensure bolts are embedded vertically and aligned to avoid fixture tilt.
- Grouting under the base plate is recommended for leveling and load distribution.
- Allow clearance for wiring through the center opening and access to bolt heads if concealed.