

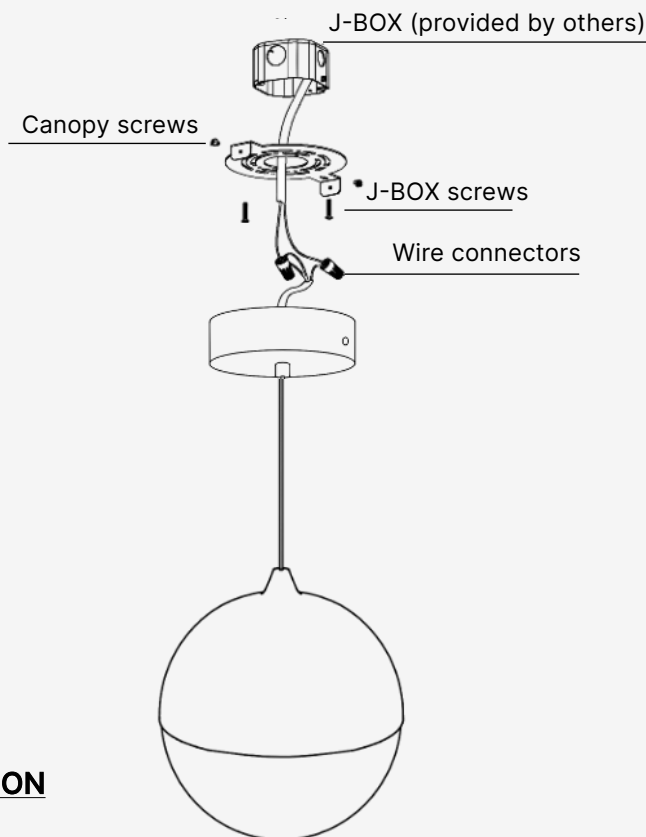
IMPORTANT: Carefully read all instructions before installing the fixture. Ignoring these guidelines could result in death, severe injury, or significant property damage. Keep these instructions for future use.

⚠ WARNING! RISK OF FIRE, ELECTRIC SHOCK, OR SERIOUS INJURY

Installation must be performed by a qualified electrician in accordance with the National Electrical Code (NEC) and local regulations.

- Always disconnect power at the circuit breaker before starting work.
- CAUTION – Risk of Fire: Do not install or operate near flammable materials. Do not cover the fixture with any combustible materials.
- Use minimum 90°C rated supply conductors.
- Confirm voltage compatibility before connection.
- Operating temperature range: -20°C to +40°C. Relative humidity must remain between 0% and 95%. Operation outside these conditions may reduce product lifespan.
- Do not tamper with sealed LED components or touch LEDs with bare hands.
- Avoid circuits shared with HVAC or motorized equipment to prevent surges.
- In the event of failure, the driver or transformer may be replaced with a manufacturer-approved equivalent. The use of non-approved replacements is prohibited and will void the warranty.
- Connect fixtures in parallel only; do not daisy-chain.
- Use only UL-listed connectors appropriate for the environment (wet/dry).
- Ensure the mounting surface is level, stable, and structurally adequate.

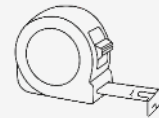
INSTALLATION DIAGRAM



Tools You May Need



Glasses



Measuring tape



Rubber gloves



Screwdriver



Drill



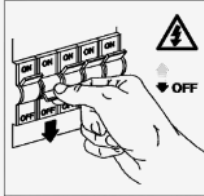
Ladder

CERTIFICATION



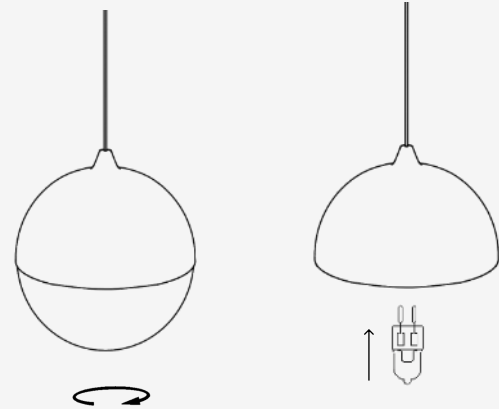
Step 1

Turn OFF the power at the main fuse box. Ensure the wall switch in the room where the fixture is being installed is also in the OFF position.



Step 2

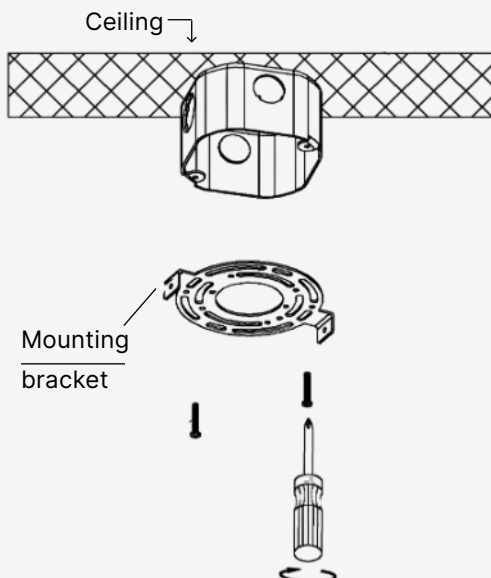
Disassemble the fixture housing to access the socket. Install the G9 lamp and reattach the housing, ensuring proper alignment and secure fit.



Step 3

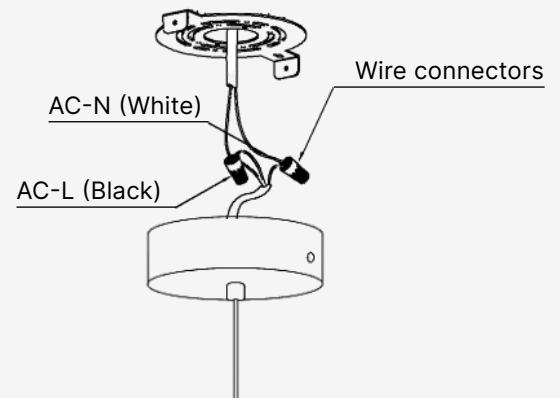
Remove the plastic anchors from the package. Drill four 8 mm diameter holes in the ceiling according to the mounting bracket layout. Insert the plastic anchors into the holes. Use two J-BOX screws to secure the mounting bracket to the junction box. Refer to the illustration below.

Note: The junction box must be a Garvin 54171-S or equivalent (provided by others).



Step 4

Use wire connectors to connect the L (live) and N (neutral) wires. After completing the connections, place all wires with connectors into the junction box (J-box). Secure the mounting bracket and canopy with screws. Then, release any cable tension by loosening the cable grippers.

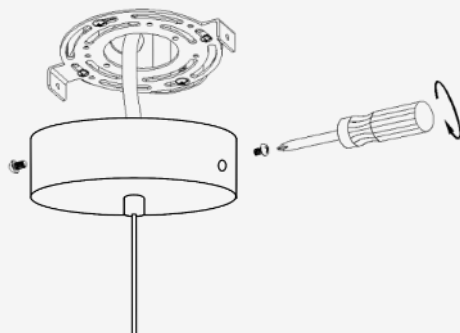


CERTIFICATION



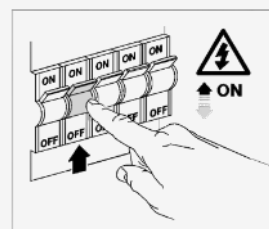
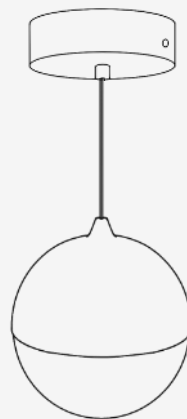
Step 5

Use a screwdriver to adjust the mounting bracket and mounting canopy.



Step 6

Once installation is complete, turn the power ON at the main fuse box. The fixture should now operate properly.



MAINTENANCE NOTES

Alabaster is a porous, delicate stone that needs careful maintenance to preserve its look and integrity. Improper care may cause stains, cracks, or surface damage.

What to Avoid:

- Do not use water, liquid cleaners, or moist cloths. Alabaster is highly absorbent and may stain or crack if exposed to moisture.
- Do not use household cleaners, glass sprays, alcohol, vinegar, or solvents. These can chemically react with the stone and cause etching or discoloration.
- Do not apply oils, waxes, or furniture polish. They can clog the stone's surface and leave visible residue or blotching.
- Do not use abrasive cloths, pads, or scrubbers. Alabaster is soft and prone to scratching.
- Do not clean using compressed air or high-pressure methods.

Do:

- Dust regularly using a soft microfiber cloth or non-abrasive feather duster.
- For more intricate areas, use a soft natural-bristle brush (such as a makeup brush or camera lens brush).
- If deeper cleaning is required, use a dry stone-care wipe specifically formulated for alabaster or marble surfaces. Test in an inconspicuous area first.
- Maintain a dry environment around the fixture. Avoid installing it in areas with high humidity, grease, or airborne pollutants (e.g., bathrooms, kitchens without proper ventilation).

Additional Notes:

- Alabaster may naturally develop subtle changes in color or veining over time. This is a normal characteristic of the material and is not considered a defect.
- Avoid direct contact between the alabaster surface and concrete, rough materials, or metal framing during installation, as this may scratch or chip the finish.

If you have questions regarding care or notice any discoloration or damage, please contact A WE Lighting Customer Support for guidance before attempting any cleaning or treatment.

CERTIFICATION



LIMITED WARRANTY

A We Lighting warrants this ceiling-mounted lighting fixture to be free from defects in materials and workmanship under normal use for a period of [5 years] from the date of purchase. This warranty applies only when the fixture is installed and operated in accordance with the instructions in this manual and all applicable building and electrical codes, including the National Electrical Code (NEC).

This warranty does not cover:

- Any damage resulting from incorrect installation, lack of proper maintenance, or mishandling.
- Operation with incompatible power sources, or unauthorized modifications to the product or its components.
- Physical damage caused by mechanical impact, corrosion, or installation in environments exceeding the fixture's ratings (e.g., temperature, humidity).
- Electrical failures due to power surges, voltage spikes, or shared circuits with inductive loads (e.g., HVAC, compressors).
- Installation in locations where the ceiling structure is not rated to support the weight of the fixture.
- Use in damp or wet locations unless the product is rated for such conditions.
- Exposure to grease, oil, dust, or chemicals that may deteriorate housing materials.

To file a warranty claim, contact our Customer Service department and provide proof of purchase, a detailed description of the issue, and photographs if available. A We Lighting reserves the right to inspect the product and determine eligibility under this warranty.

CERTIFICATION

