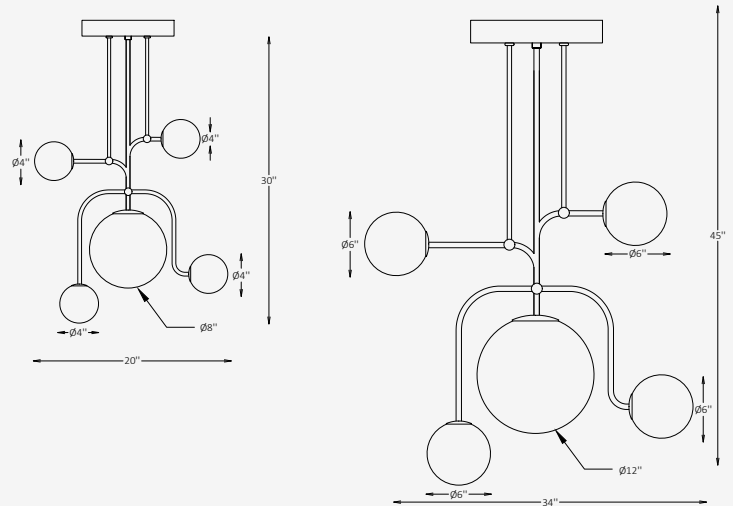




## GENERAL INFORMATION

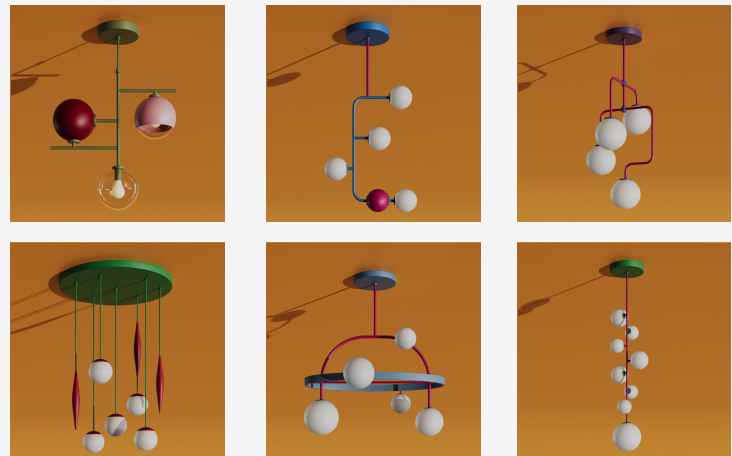
The CALDERA pendant blends sculptural balance with modern geometric expression, creating a statement fixture that elevates both residential and hospitality interiors. Its multi-sphere composition is arranged along fluid, intersecting lines, delivering soft 360° diffused illumination from every angle. Designed with a focus on visual harmony and functional performance, CALDERA offers multiple sphere sizes and configurations, allowing designers to scale the piece to the room's proportions. Crafted from durable stainless steel and hand-finished glass, the fixture is available in an extensive palette of RAL, metallic, and custom finishes, including the exclusive A We Lighting Design Palette.



## SPECIFICATIONS

Material	Stainless steel + Glass
Glass Diameter	4" / 6" / 8" / 12"
Length	20" / 34"
Height	30" / 45"
Input Voltage	110-277V, 50-60 Hz
Light Source Type	LED
Power	18W / 21W
LED Output	120 lm/W
CCT	2700K / 3000K / 3500K / 4000K
CRI	90
Dimming & Driver	Integral, 0-10V
Light Distribution	360° Diffused Beam
IP Rating	IP 20
Warranty	5 years
Finishes	28 RAL finishes 12 metallic finishes Custom on request*

## OTHER VERSIONS AVAILABLE



## CERTIFICATION



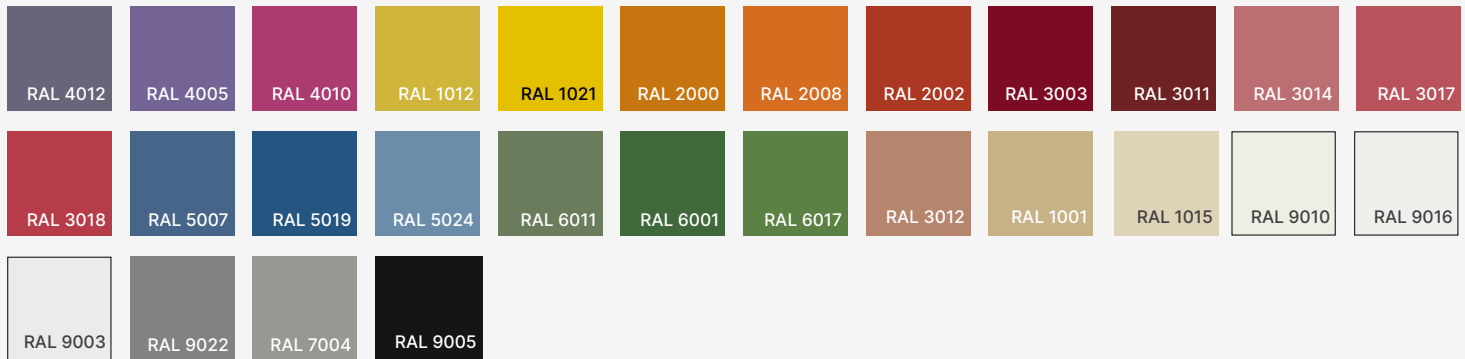
## Ordering Information

Select one item from each category below. If your desired option is unavailable, please contact our team for support or custom solutions.

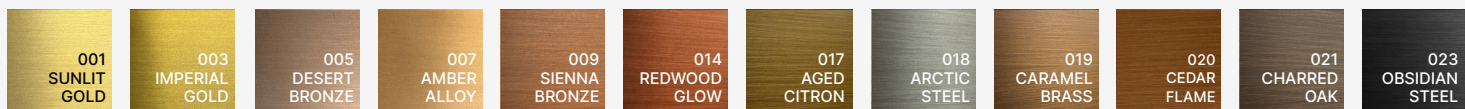
Code	Height / Length / Wattage / Lumens	CCT	Dimming
<input checked="" type="checkbox"/> <b>CLD</b> Pendant	<input type="checkbox"/> <b>21</b> 30" / 20" / 18W / 2160 lm  <input type="checkbox"/> <b>25</b> 45" / 34" / 21W / 2520 lm  <input type="checkbox"/> <b>Cus</b> Custom on request	<input type="checkbox"/> <b>27</b> 2700K  <input type="checkbox"/> <b>30</b> 3000K  <input type="checkbox"/> <b>35</b> 3500K  <input type="checkbox"/> <b>40</b> 4000K  <input type="checkbox"/> <b>Cus</b> Custom on request	<input type="checkbox"/> <b>NN</b> Non-Dimmable  <input type="checkbox"/> <b>DM</b> 0-10V
Glass Type	Body Finish Option	Canopy Finish Option	<p>Note: The color combination shown in the photo on the first page of this spec sheet is part of the exclusive A We Lighting Design Palette. This custom palette reflects our brand's identity and is available as a special finish option — A We Lighting Palette*.</p>
<input type="checkbox"/> <b>CL</b> Clear  <input type="checkbox"/> <b>FR</b> Frosted  <input type="checkbox"/> <b>Cus</b> Custom on request	<input type="checkbox"/> <b>ST</b> Standard  <input type="checkbox"/> <b>MC</b> Metallic  <input type="checkbox"/> <b>AWE</b> A We Lighting Palette*  <input type="checkbox"/> <b>Cus</b> Custom on request	<input type="checkbox"/> <b>ST</b> Standard  <input type="checkbox"/> <b>MC</b> Metallic  <input type="checkbox"/> <b>AWE</b> A We Lighting Palette*  <input type="checkbox"/> <b>Cus</b> Custom on request	

## Finishes

### Standard finishes



### Metallic finishes



**RAL K7 CLASSIC COLORS (80-95% GLOSS):** RAL\_ \_ \_ \_

All RAL Classic colors are available with no setup fee.

On your specification submittal, choose your RAL color by entering the 4-digit RAL code (e.g., RAL 3003).

