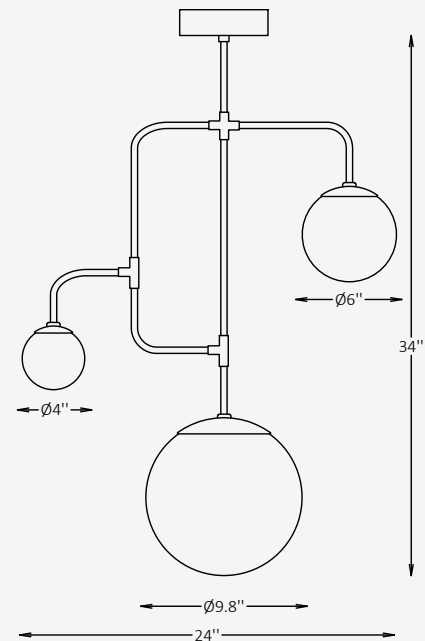




GENERAL INFORMATION

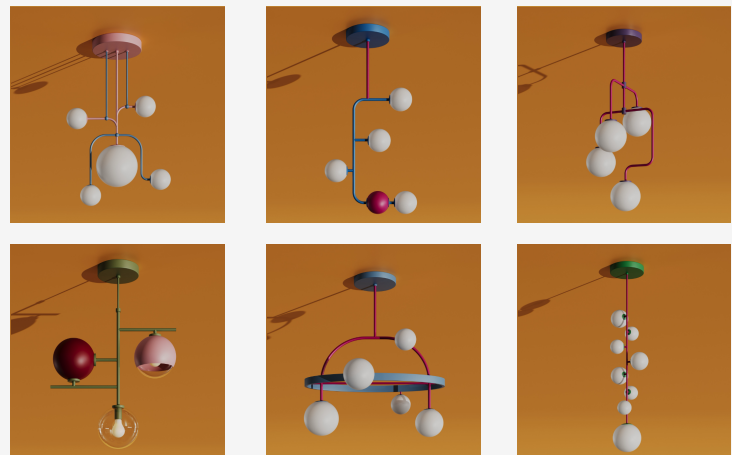
The Lunetta pendant brings a playful sculptural presence to modern interiors, combining soft opal glass spheres with a refined stainless steel framework. Its branching geometry creates a sense of movement and balance, while the frosted globes deliver a gentle 360° diffused illumination ideal for dining areas, lounges, and creative environments. Customizable finishes allow Lunetta to shift from bold and expressive to minimal and understated, making it a versatile statement piece for residential and commercial spaces alike.



SPECIFICATIONS

Material	Stainless steel + Glass / Acrylic
Diffuser	Glass / Acrylic
Sphere diameters	4" / 6" / 9.8"
Length	24"
Height	34"
Input Voltage	110-277V, 50-60 Hz
Light Source Type	LED
Power	15W
LED Output	1440 lm
CCT	2700K / 3000K / 3500K / 4000K
CRI	90
Dimming & Driver	Integral, 0-10V
Light Distribution	360° Diffused Beam
IP Rating	IP 20
Warranty	5 years
Finishes	28 RAL finishes 12 metallic finishes Custom on request*

OTHER VERSIONS AVAILABLE



CERTIFICATION



Ordering Information

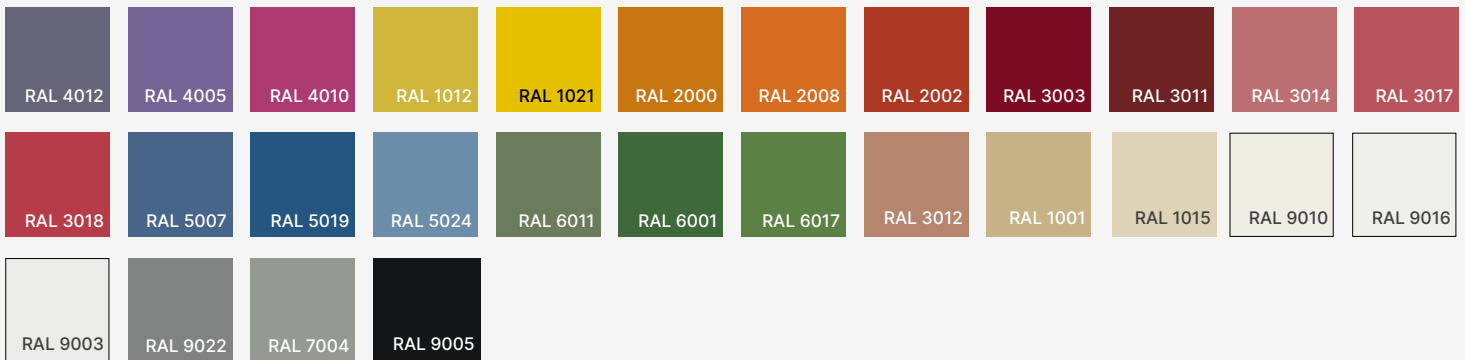
Select one item from each category below. If your desired option is unavailable, please contact our team for support or custom solutions.

Code	Wattage / Lumens	CCT	Dimming
<input checked="" type="checkbox"/> LUN Pendant	<input type="checkbox"/> 15 15W / 1440 lm	<input type="checkbox"/> 27 2700K	<input type="checkbox"/> NN Non-Dimmable
	<input type="checkbox"/> Cus Custom on request	<input type="checkbox"/> 30 3000K	<input type="checkbox"/> DM 0-10V
		<input type="checkbox"/> 35 3500K	
		<input type="checkbox"/> 40 4000K	
		<input type="checkbox"/> Cus Custom on request	
Sphere Material	Glass Type	Body Finish Option	Canopy Finish Option
<input type="checkbox"/> GL Glass	<input type="checkbox"/> CL Clear	<input type="checkbox"/> ST Standard	<input type="checkbox"/> ST Standard
<input type="checkbox"/> AL Acrylic	<input type="checkbox"/> FR Frosted	<input type="checkbox"/> MC Metallic	<input type="checkbox"/> MC Metallic
<input type="checkbox"/> Cus Custom on request	<input type="checkbox"/> Cus Custom on request	<input type="checkbox"/> AWE A We Lighting Palette*	<input type="checkbox"/> AWE A We Lighting Palette*
	<i>Available only for glass spheres*</i>	<input type="checkbox"/> Cus Custom on request	<input type="checkbox"/> Cus Custom on request

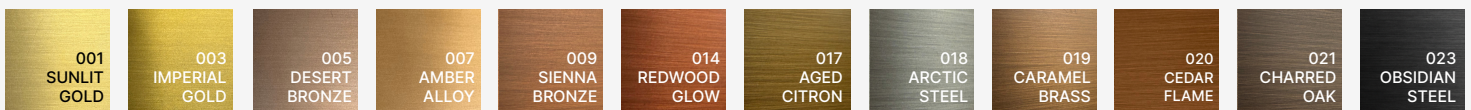
Note: The color combination shown in the photo on the first page of this spec sheet is part of the exclusive A We Lighting Design Palette. This custom palette reflects our brand's identity and is available as a special finish option — A We Lighting Palette*.

Finishes

Standard finishes



Metallic finishes



RAL K7 CLASSIC COLORS (80-95% GLOSS): RAL_ _ _ _

All RAL Classic colors are available with no setup fee.

On your specification submittal, choose your RAL color by entering the 4-digit RAL code (e.g., RAL 3003).

