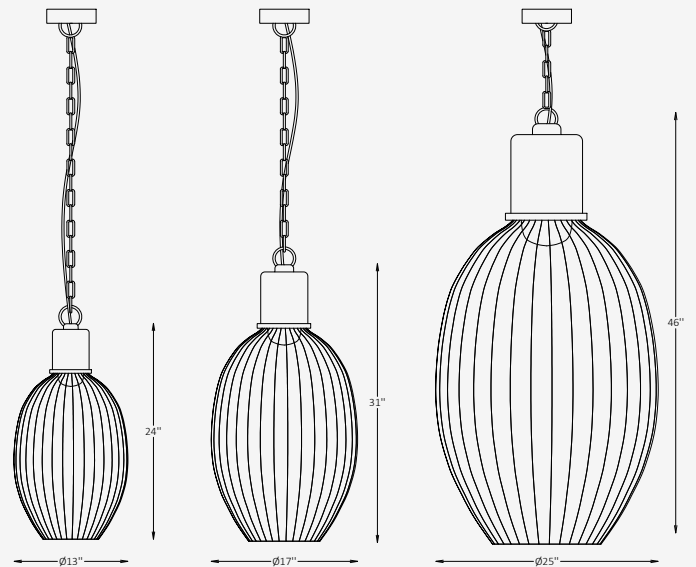




## GENERAL INFORMATION

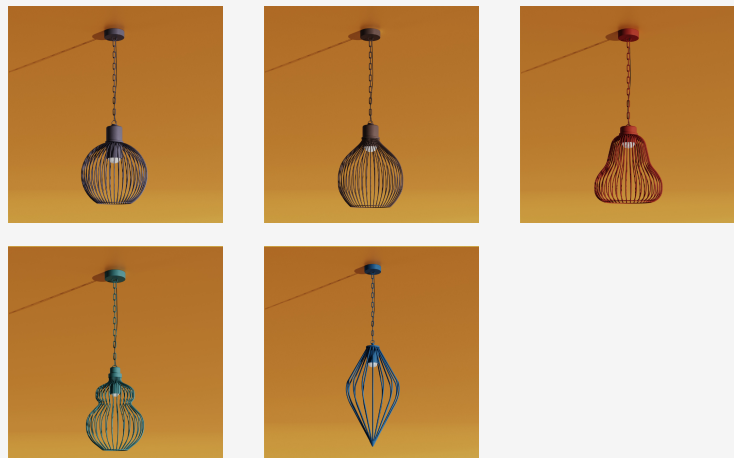
The VIVRE pendant expresses a sense of rhythm and lightness through its sculptural, open-frame design. Crafted from precision-formed stainless steel with a frosted acrylic diffuser, it delivers a warm and focused illumination that enhances outdoor spaces with elegance and durability. Its elongated, organic profile evokes natural harmony while maintaining architectural balance, making VIVRE ideal for patios, terraces, and contemporary hospitality environments seeking refined visual character and lasting performance.



## SPECIFICATIONS

Material	Stainless steel
Lens	Frosted, Acrylic
Diameter	13" / 17" / 25"
Height	24" / 31" / 46"
Light Source Type	LED
Power	12W / 15W / 20W
Input Voltage	110-277V, 50-60 Hz
LED Output	120 lm/W
CCT	2700K / 3000K / 3500K / 4000K / 5000K
CRI	90
Dimming & Driver	Integral, 0-10V
Light Distribution	Direct
IP Rating	IP 65
Warranty	5 years
Finishes	28 standard finishes 12 metallic finishes Custom on request*

## OTHER VERSIONS AVAILABLE



## CERTIFICATION



Project

Notes

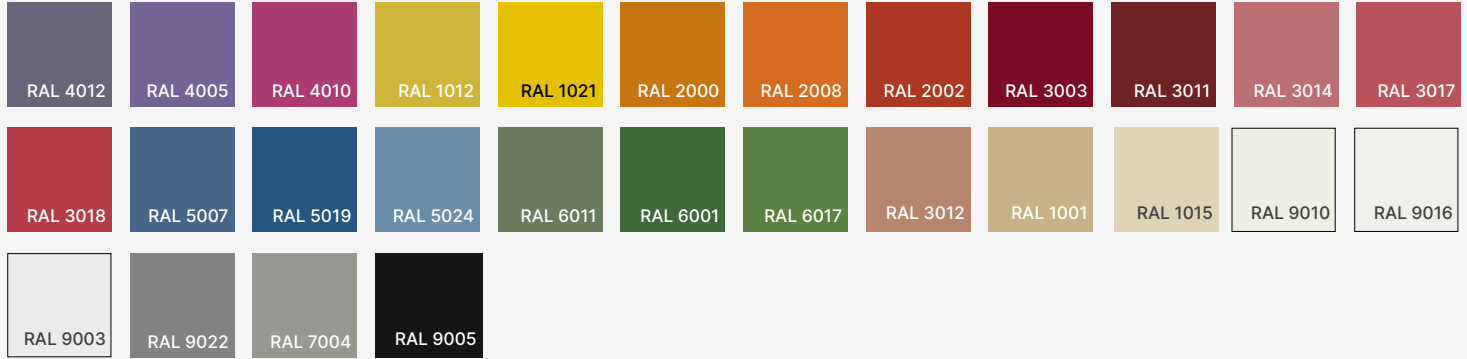
## Ordering Information

Select one item from each category below. If your desired option is unavailable, please contact our team for support or custom solutions.

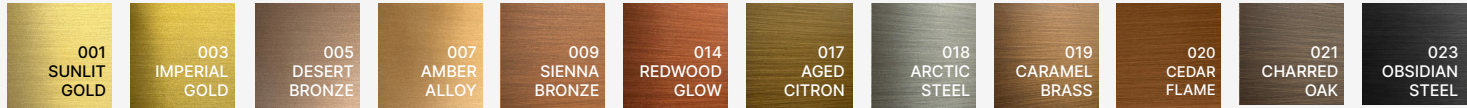
Code	Diameter Ø / Height	Material	CCT
<input checked="" type="checkbox"/> <b>VRE</b> Outdoor Pendant	<input type="checkbox"/> <b>13</b> 13" / 24"	<input type="checkbox"/> <b>SS</b> Stainless Steel	<input type="checkbox"/> <b>27</b> 2700K
	<input type="checkbox"/> <b>17</b> 17" / 31"	<input type="checkbox"/> <b>Cus</b> Custom on request	<input type="checkbox"/> <b>30</b> 3000K
	<input type="checkbox"/> <b>25</b> 25" / 46"		<input type="checkbox"/> <b>35</b> 3500K
	<input type="checkbox"/> <b>Cus</b> Custom on request		<input type="checkbox"/> <b>40</b> 4000K
			<input type="checkbox"/> <b>50</b> 5000K
Wattage / Lumens	Light Distribution	Dimming	Body Finish Option
<input type="checkbox"/> <b>14</b> 12 W / 1440 lm	<input checked="" type="checkbox"/> <b>DR</b> Direct	<input type="checkbox"/> <b>NN</b> Non-Dimmable	<input type="checkbox"/> <b>ST</b> Standard
<input type="checkbox"/> <b>18</b> 15 W / 1800 lm		<input type="checkbox"/> <b>DM</b> 0-10V	<input type="checkbox"/> <b>MC</b> Metallic
<input type="checkbox"/> <b>24</b> 20 W / 2400 lm			<input type="checkbox"/> <b>Cus</b> Custom on request
<input type="checkbox"/> <b>Cus</b> Custom on request			
Finish Type	Canopy Finish Option	Suspension Option	Stem/Chain Finish Option
<input type="checkbox"/> <b>GL</b> Glossy	<input type="checkbox"/> <b>ST</b> Standard	<input type="checkbox"/> <b>RGS</b> Rigid Stem	<input type="checkbox"/> <b>ST</b> Standard
<input type="checkbox"/> <b>MT</b> Matte	<input type="checkbox"/> <b>MC</b> Metallic	<input type="checkbox"/> <b>MCH</b> Metal Chain	<input type="checkbox"/> <b>MC</b> Metallic
	<input type="checkbox"/> <b>Cus</b> Custom on request		<input type="checkbox"/> <b>Cus</b> Custom on request
Stem/Chain Length			
<input type="checkbox"/> <b>L8</b> 8"			
<input type="checkbox"/> <b>L16</b> 16"			
<input type="checkbox"/> <b>L24</b> 24"			
<input type="checkbox"/> <b>L32</b> 32"			
<input type="checkbox"/> <b>Cus</b> Custom on request			

# Finishes

## Standard finishes



## Metallic finishes



**RAL K7 CLASSIC COLORS (80-95% GLOSS):** RAL \_ \_ \_ \_

All RAL Classic colors are available with no setup fee.

On your specification submittal, choose your RAL color by entering the 4-digit RAL code (e.g., RAL 3003).

