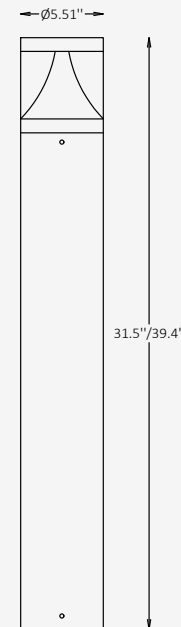




## GENERAL INFORMATION

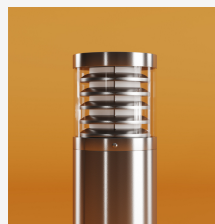
THALON is a refined outdoor bollard luminaire characterized by its slender cylindrical form and sculpted head detail, creating a clean and timeless architectural presence. Crafted from durable stainless steel with a clear acrylic diffuser, the design balances material precision with visual clarity. Designed to deliver uniform ambient illumination with a symmetrical Type V, 360° light distribution, THALON is ideal for pathways, open landscapes, and perimeter lighting where consistent coverage, durability, and understated elegance are essential.



## SPECIFICATIONS

Material	316 stainless steel + PMMA
Lens	Clear, Acrylic
Diameter	5.5
Total Height	31.5" / 39.4"
Light Source Type	LED
Power	15W / 20W
Input Voltage	110-277V, 50-60 Hz
LED Output	100 lm/W
CCT	2200K / 2700K / 3000K / 4000K / 5000K
CRI	80
Dimming & Driver	Integral, 0-10V
Light Distribution	Type V 360° symmetrical light distribution
IP Rating	IP 65
IK Rating	IK 08
Warranty	1 years
Finishing	Silver Smooth

## OTHER VERSIONS AVAILABLE



## CERTIFICATION



## Ordering Information

Select one item from each category below. If your desired option is unavailable, please contact our team for support or custom solutions.

Code	Diameter Ø	Height	Material
<input checked="" type="checkbox"/> <b>THL-B</b> Bollard	<input checked="" type="checkbox"/> <b>5</b> 5.5"	<input type="checkbox"/> <b>31</b> 31.5" <input type="checkbox"/> <b>39</b> 39.4"	<input checked="" type="checkbox"/> <b>SS</b> 316 Stainless Steel
CCT	Wattage / Lumens	Light Distribution	Dimming
<input type="checkbox"/> <b>22</b> 2200K	<input type="checkbox"/> <b>15</b> 15 W / 1500 lm	<input checked="" type="checkbox"/> <b>LD5</b> Type V	<input type="checkbox"/> <b>NN</b> Non-Dimmable
<input type="checkbox"/> <b>27</b> 2700K	<input type="checkbox"/> <b>20</b> 20 W / 2000 lm	360° symmetrical light distribution	<input type="checkbox"/> <b>DM</b> 0-10V
<input type="checkbox"/> <b>30</b> 3000K			
<input type="checkbox"/> <b>40</b> 4000K			
<input type="checkbox"/> <b>50</b> 5000K			
Appliance Class	Body Finish Option	Mounting	
<input type="checkbox"/> <b>AC-I</b> Class I	<input checked="" type="checkbox"/> <b>SL</b> Silver Smooth	<input checked="" type="checkbox"/> <b>SM</b> Surface-mounted	
<input type="checkbox"/> <b>AC-II</b> Class II			

## Finishes

Standard finishes

