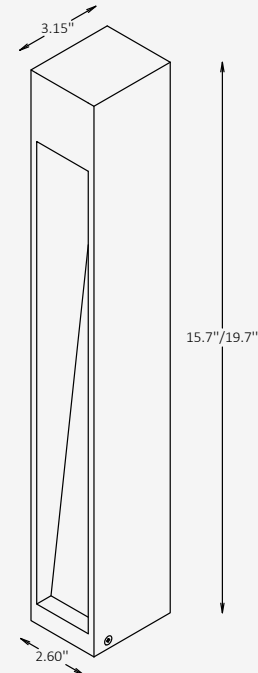




GENERAL INFORMATION

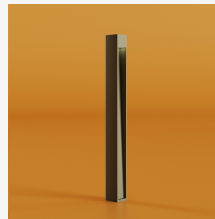
STATUM G is a compact outdoor bollard luminaire defined by its slim vertical form and precise recessed light aperture. The clean aluminum body emphasizes clarity of geometry and material restraint, creating a quiet yet confident architectural presence in exterior environments. Designed to deliver controlled, downward illumination with a symmetrical Type V distribution, STATUM G is ideal for pathways, borders, and landscape applications where subtle guidance, visual comfort, and a minimal visual footprint are required.



SPECIFICATIONS

Material	Aluminium
Lens	Acrylic
Height	15.7" / 19.7"
Length	2.60"
Width	3.15"
Light Source Type	LED
Power	5W
Input Voltage	110-277V, 50-60 Hz
LED Output	120 lm/W
CCT	3000K / 4000K / 6000K
CRI	80
Dimming & Driver	Integral, 0-10V
Light Distribution	Type V – symmetrical, downward
IP Rating	IP 65
Warranty	5 years
Finishing	16 standard finishes

OTHER VERSIONS AVAILABLE



CERTIFICATION



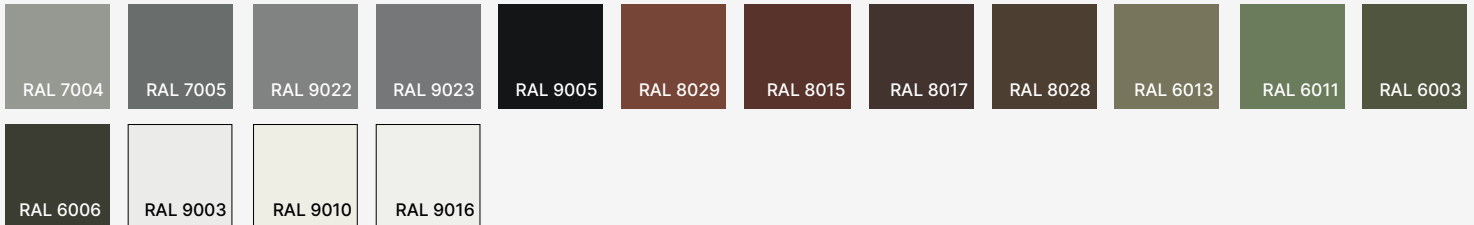
Ordering Information

Select one item from each category below. If your desired option is unavailable, please contact our team for support or custom solutions.

Code	Height	Material	CCT
<input checked="" type="checkbox"/> STM-G Bollard	<input type="checkbox"/> 15 15.7" <input type="checkbox"/> 19 19.7"	<input checked="" type="checkbox"/> AL Aluminium	<input type="checkbox"/> 30 3000K <input type="checkbox"/> 40 4000K <input type="checkbox"/> 60 6000K
Wattage / Lumens	Light Distribution	Dimming	Body Finish Option
<input checked="" type="checkbox"/> 6 5 W / 600 lm	<input checked="" type="checkbox"/> LD5 Type V – symmetrical, downward	<input type="checkbox"/> NN Non-Dimmable <input type="checkbox"/> DM 0-10V	<input type="checkbox"/> ST Standard <input type="checkbox"/> Cus Custom on request
Finish Type	Mounting		
<input type="checkbox"/> GL Glossy <input type="checkbox"/> MT Matte	<input checked="" type="checkbox"/> SM Surface-mounted		

Finishes

Standard finishes



RAL K7 CLASSIC COLORS (80-95% GLOSS): RAL_ _ _ _

All RAL Classic colors are available with no setup fee.

On your specification submittal, choose your RAL color by entering the 4-digit RAL code (e.g., RAL 3003).

