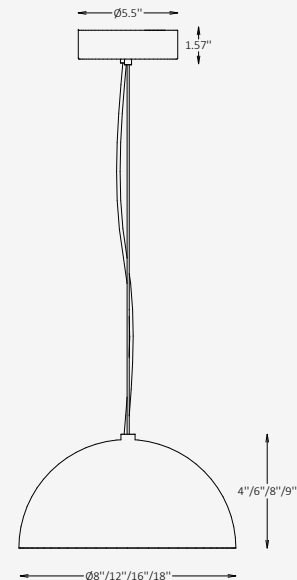




GENERAL INFORMATION

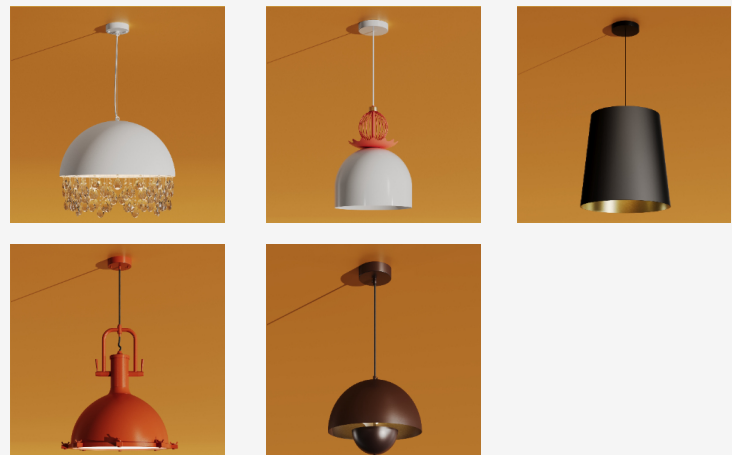
ALVIO is a decorative pendant defined by its clean dome silhouette and balanced material expression. The form directs light downward while softly diffusing it through the interior, creating a comfortable and focused illumination ideal for intimate settings. Designed for dining areas, hospitality environments, and residential interiors, ALVIO combines functional lighting with a strong visual presence. Its refined aluminum construction and wide range of finishes allow for seamless integration into both bold and understated design concepts, making the fixture a versatile element within the space.



SPECIFICATIONS

Material	Aluminum
Diffuser	Acrylic
Diameter	8" / 12" / 16" / 18"
Height	4" / 6" / 8" / 9"
Input Voltage	110-277V, 50-60 Hz
Light Source Type	LED
Power	8W / 12W / 16W / 24W
LED Output	90 lm/W
CCT	2700K / 3000K / 3500K / 4000K
CRI	90
Dimming & Driver	Integral, 0-10V
Light Distribution	Direct, Diffused
IP Rating	IP 20
Warranty	5 years
Finishes	34 RAL finishes 12 metallic finishes Custom on request*

OTHER VERSIONS AVAILABLE



CERTIFICATION



Project

Notes

Ordering Information

Select one item from each category below. If your desired option is unavailable, please contact our team for support or custom solutions.

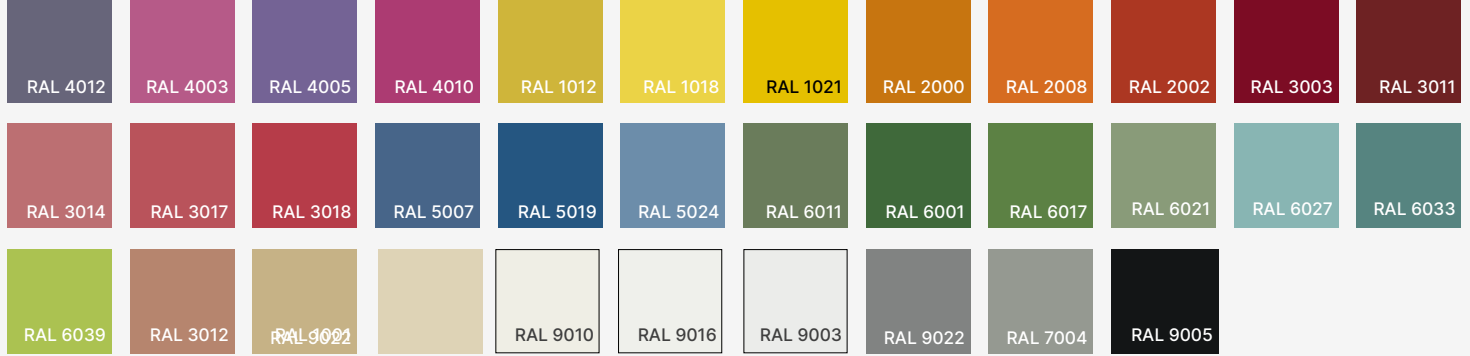
Code	Diameter Ø / Height	Wattage / Lumens	CCT
<input checked="" type="checkbox"/> LVO Pendant	<input type="checkbox"/> 8 8" / 4"	<input type="checkbox"/> 8 8W / 720 lm	<input type="checkbox"/> 27 2700K
	<input type="checkbox"/> 12 12" / 6"	<input type="checkbox"/> 12 12W / 1080 lm	<input type="checkbox"/> 30 3000K
	<input type="checkbox"/> 16 16" / 8"	<input type="checkbox"/> 16 16W / 1440 lm	<input type="checkbox"/> 35 3500K
	<input type="checkbox"/> 18 18" / 9"	<input type="checkbox"/> 24 24W / 2160 lm	<input type="checkbox"/> 40 4000K
	<input type="checkbox"/> Cus Custom on request	<input type="checkbox"/> Cus Custom on request	<input type="checkbox"/> Cus Custom on request
Dimming	Interior Finish Option	Exterior Finish Option	Canopy Finish Option
<input type="checkbox"/> NN Non-Dimmable	<input type="checkbox"/> ST Standard	<input type="checkbox"/> ST Standard	<input type="checkbox"/> ST Standard
<input type="checkbox"/> DM 0-10V	<input type="checkbox"/> MC Metallic	<input type="checkbox"/> MC Metallic	<input type="checkbox"/> MC Metallic
	<input type="checkbox"/> Cus Custom on request	<input type="checkbox"/> Cus Custom on request	<input type="checkbox"/> Cus Custom on request
Finish Type	Cord Length	Cord Finish Option	
<input type="checkbox"/> GL Glossy	<input type="checkbox"/> L11 118" (adjustable)	<input type="checkbox"/> SV Standard Vinyl	
<input type="checkbox"/> MT Matte	<input type="checkbox"/> Cus Custom on request	<input type="checkbox"/> DB Decorative Braided	
		<input type="checkbox"/> Cus Custom on request	

Project

Notes

Finishes

Standard finishes



Metallic finishes



Cord finishes

Standard Vinyl



Decorative Braided



RAL K7 CLASSIC COLORS (80-95% GLOSS): RAL _ _ _ _

All RAL Classic colors are available with no setup fee.

On your specification submittal, choose your RAL color by entering the 4-digit RAL code (e.g., RAL 3003).

