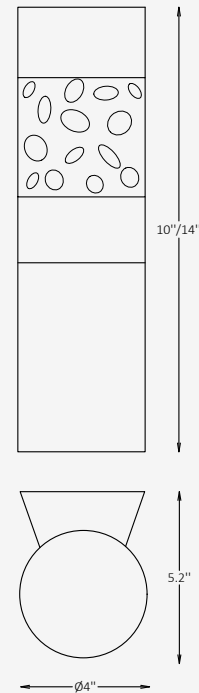




GENERAL INFORMATION

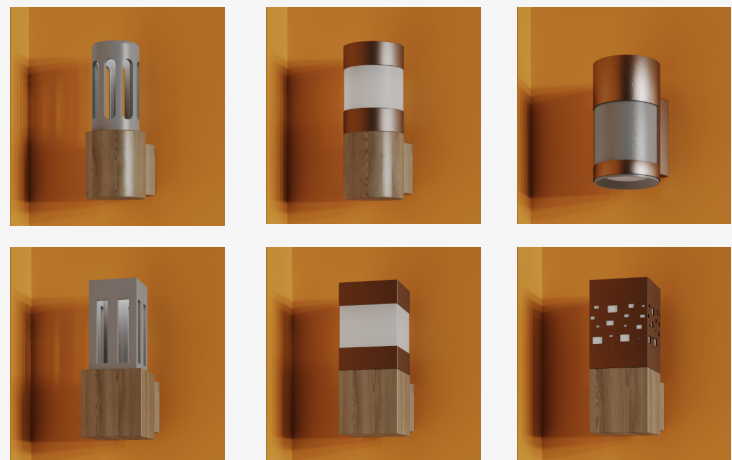
The THORNE LASER W is a decorative outdoor wall luminaire that blends architectural form with functional illumination. Its precision-cut aluminum housing features perforated laser patterns that project ambient light outward, complemented by a frosted acrylic diffuser for soft 360° Type V symmetrical distribution. With IP65 protection, integral 0–10 V dimming, and multiple finish and CCT options, it enhances façades and pathways with both performance and visual depth.



SPECIFICATIONS

Material	Extruded Aluminum
Lens	Frosted, Acrylic
Diameter	4" / Custom on request*
Height	10" / 14"
Depth	5.2"
Light Source Type	LED
Power	10W / 18W / 23W
Input Voltage	110-277V, 50-60 Hz
LED Output	48 lm/W
CCT	2200K / 2700K / 3000K / 4000K / 5000K
CRI	90
Dimming & Driver	Integral, 0-10V
Light Distribution	Type V 360° symmetrical light distribution
IP Rating	IP 65
Warranty	5 years
Finishes	16 standard finishes 8 wood-effect finishes 12 metallic finishes Custom on request*

OTHER VERSIONS AVAILABLE



CERTIFICATION



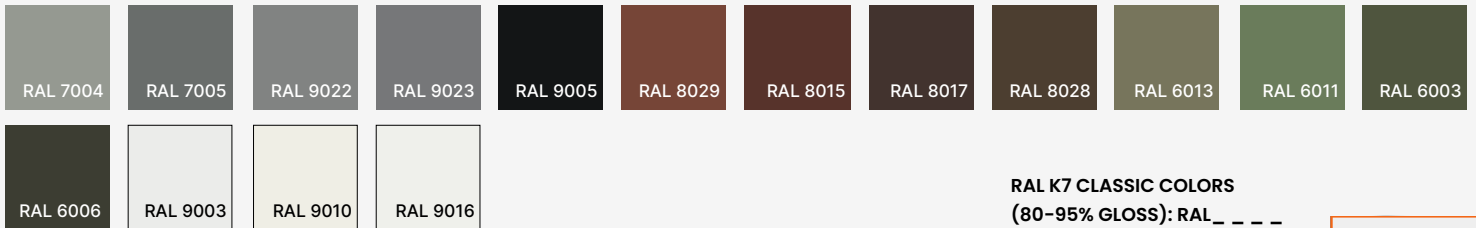
Ordering Information

Select one item from each category below. If your desired option is unavailable, please contact our team for support or custom solutions.

Code	Diameter Ø	Height	Material
<input checked="" type="checkbox"/> THRL-W Outdoor Wall	<input type="checkbox"/> 4 4.2"	<input type="checkbox"/> 10 10"	<input checked="" type="checkbox"/> AL Extruded Aluminum
	<input type="checkbox"/> Cus Custom on request	<input type="checkbox"/> 14 14"	
		<input type="checkbox"/> Cus Custom on request	
CCT	Wattage / Lumens	Light Distribution	Dimming
<input type="checkbox"/> 22 2200K	<input type="checkbox"/> 4 10 W / 480 lm	<input checked="" type="checkbox"/> LD5 Type V	<input type="checkbox"/> NN Non-Dimmable
<input type="checkbox"/> 30 3000K	<input type="checkbox"/> 8 18 W / 864 lm	<input type="checkbox"/> 360° symmetrical light distribution	<input type="checkbox"/> DM 0-10V
<input type="checkbox"/> 40 4000K	<input type="checkbox"/> 11 23 W / 1104 lm		
<input type="checkbox"/> 50 5000K	<input type="checkbox"/> Cus Custom on request		
Body Finish Options	Base Finish Options		
<input type="checkbox"/> ST Standard	<input type="checkbox"/> ST Standard		
<input type="checkbox"/> WE Wood effect	<input type="checkbox"/> WE Wood effect		
<input type="checkbox"/> MC Metallic	<input type="checkbox"/> MC Metallic		
<input type="checkbox"/> Cus Custom on request	<input type="checkbox"/> Cus Custom on request		

Finishes

Standard finishes



RAL K7 CLASSIC COLORS

(80-95% GLOSS): RAL_ _ _ _

All RAL Classic colors are available with no setup fee.

On your specification submittal, choose your RAL color by entering the 4-digit RAL code (e.g., RAL 3003).



Wood-effect finishes



Metallic finishes

