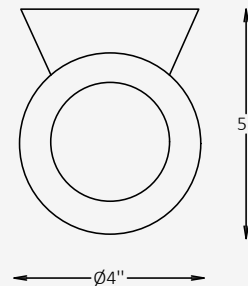
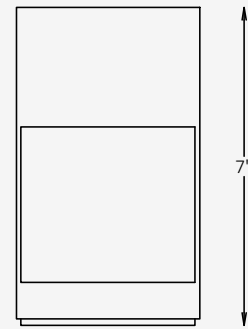




## GENERAL INFORMATION

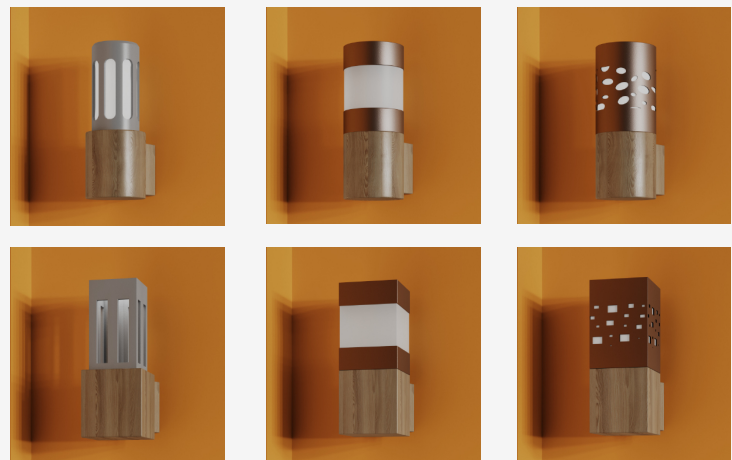
The PILLAR W is a contemporary outdoor wall luminaire that combines soft illumination with refined architectural form. Its cylindrical housing and frosted acrylic diffuser provide smooth, downward light distribution ideal for façades, entryways, and pathways. Designed for durability and performance, PILLAR W features IP65 protection, multiple finish and CCT options, and integral 0-10V dimming for enhanced versatility in modern exterior lighting applications.



## SPECIFICATIONS

Material	Extruded Aluminum
Lens	Frosted, Acrylic
Diameter	4" / Custom on request*
Height	7"
Depth	5"
Light Source Type	LED
Power	10W / 18W / 23W
Input Voltage	110-277V, 50-60 Hz
LED Output	48 lm/W
CCT	2200K / 2700K / 3000K / 4000K / 5000K
CRI	90
Dimming & Driver	Integral, 0-10V
Light Distribution	Type IV — Forward Throw (Downlight)
IP Rating	IP 65
Warranty	5 years
Finishes	16 standard finishes 8 wood-effect finishes 12 metallic finishes Custom on request*
Operating Temp.	-25°C to +45°C (-13°F to +113°F)

## OTHER VERSIONS AVAILABLE



## CERTIFICATION



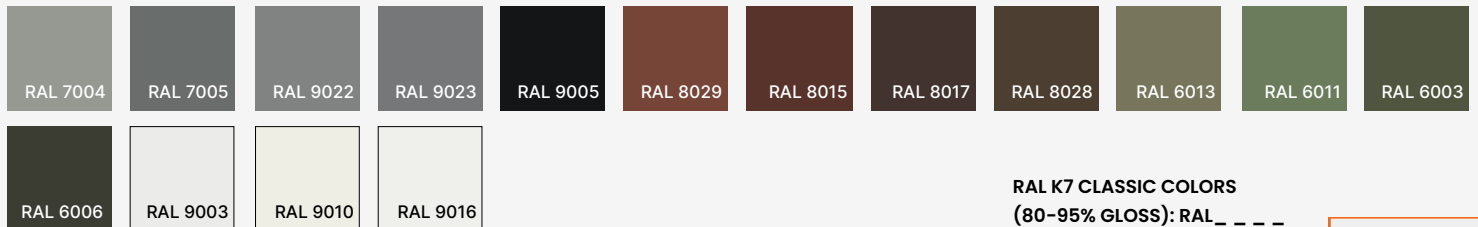
## Ordering Information

Select one item from each category below. If your desired option is unavailable, please contact our team for support or custom solutions.

Code	Diameter / Height / Depth	Material	CCT
<input checked="" type="checkbox"/> <b>PLR-W</b> Outdoor Wall	<input type="checkbox"/> <b>4</b> 4" x 7" x 5"  <input type="checkbox"/> <b>Cus</b> Custom on request	<input checked="" type="checkbox"/> <b>AL</b> Extruded Aluminum	<input type="checkbox"/> <b>22</b> 2200K  <input type="checkbox"/> <b>30</b> 3000K  <input type="checkbox"/> <b>40</b> 4000K  <input type="checkbox"/> <b>50</b> 5000K
Wattage / Lumens	Light Distribution	Dimming	Body Finish Options
<input type="checkbox"/> <b>4</b> 10 W / 480 lm  <input type="checkbox"/> <b>8</b> 18 W / 864 lm  <input type="checkbox"/> <b>11</b> 23 W / 1104 lm  <input type="checkbox"/> <b>Cus</b> Custom on request	<input checked="" type="checkbox"/> <b>LD4</b> Type IV — Forward Throw (Downlight)	<input type="checkbox"/> <b>NN</b> Non-Dimmable  <input type="checkbox"/> <b>DM</b> 0-10V	<input type="checkbox"/> <b>ST</b> Standard  <input type="checkbox"/> <b>WE</b> Wood effect  <input type="checkbox"/> <b>MC</b> Metallic  <input type="checkbox"/> <b>Cus</b> Custom on request
Base Finish Options			
<input type="checkbox"/> <b>ST</b> Standard  <input type="checkbox"/> <b>WE</b> Wood effect  <input type="checkbox"/> <b>MC</b> Metallic  <input type="checkbox"/> <b>Cus</b> Custom on request			

## Finishes

### Standard finishes



**RAL K7 CLASSIC COLORS**  
(80-95% GLOSS): RAL\_ \_ \_ \_

All RAL Classic colors are available with no setup fee.

On your specification submittal, choose your RAL color by entering the 4-digit RAL code (e.g., RAL 3003).



### Wood-effect finishes



### Metallic finishes

