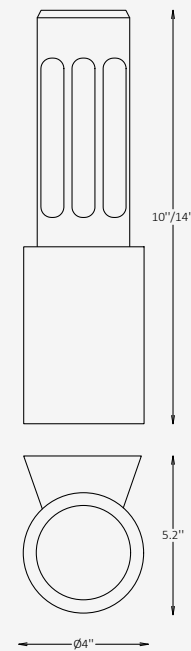




## GENERAL INFORMATION

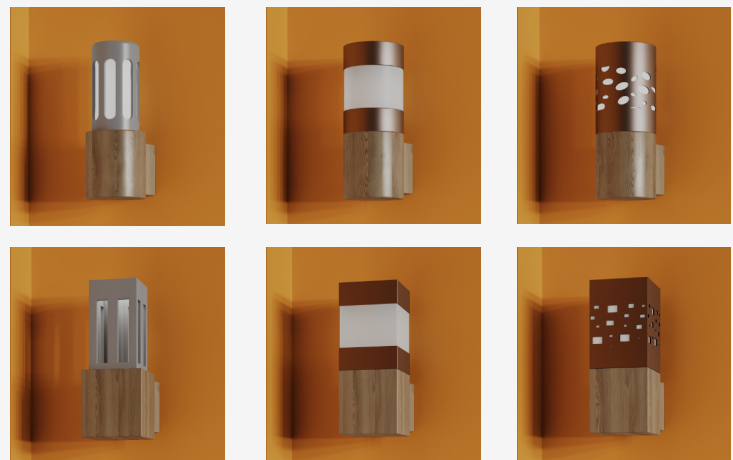
The ARBORIS W is a modern outdoor wall luminaire that blends architectural precision with natural design elements. Featuring a vertical open-slat structure, it creates distinctive light patterns and a balanced 360° Type V symmetrical glow ideal for façades and landscape accents. Crafted from extruded aluminum with IP65 protection and integral 0–10 V dimming, ARBORIS W delivers dependable performance, aesthetic versatility, and timeless appeal in exterior applications.



## SPECIFICATIONS

Material	Extruded Aluminum
Lens	N/A
Diameter	4" / Custom on request*
Height	10" / 14"
Depth	5.2"
Light Source Type	LED
Power	8W / 15W / 20W
Input Voltage	110-277V, 50-60 Hz
LED Output	60 lm/W
CCT	2200K / 2700K / 3000K / 4000K / 5000K
CRI	90
Dimming & Driver	Integral, 0-10V
Light Distribution	Type V 360° symmetrical light distribution
IP Rating	IP 65
Warranty	5 years
Finishes	16 standard finishes 8 wood-effect finishes 12 metallic finishes Custom on request*
Operating Temp.	-25°C to +45°C (-13°F to +113°F)

## OTHER VERSIONS AVAILABLE



## CERTIFICATION



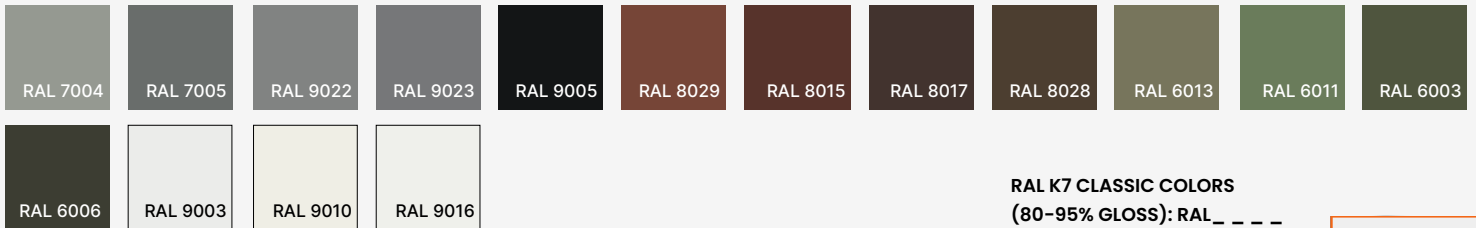
## Ordering Information

Select one item from each category below. If your desired option is unavailable, please contact our team for support or custom solutions.

Code	Diameter Ø	Height	Material
<input checked="" type="checkbox"/> <b>ARB-W</b> Outdoor Wall	<input type="checkbox"/> <b>4</b> 4.2"	<input type="checkbox"/> <b>10</b> 10"	<input checked="" type="checkbox"/> <b>AL</b> Extruded Aluminum
	<input type="checkbox"/> <b>Cus</b> Custom on request	<input type="checkbox"/> <b>14</b> 14"	
		<input type="checkbox"/> <b>Cus</b> Custom on request	
CCT	Wattage / Lumens	Light Distribution	Dimming
<input type="checkbox"/> <b>22</b> 2200K	<input type="checkbox"/> <b>4</b> 8 W / 480 lm	<input checked="" type="checkbox"/> <b>LD5</b> Type V	<input type="checkbox"/> <b>NN</b> Non-Dimmable
<input type="checkbox"/> <b>30</b> 3000K	<input type="checkbox"/> <b>9</b> 15 W / 900 lm	<input type="checkbox"/> 360° symmetrical light distribution	<input type="checkbox"/> <b>DM</b> 0-10V
<input type="checkbox"/> <b>40</b> 4000K	<input type="checkbox"/> <b>12</b> 20 W / 1200 lm		
<input type="checkbox"/> <b>50</b> 5000K	<input type="checkbox"/> <b>Cus</b> Custom on request		
Body Finish Options	Base Finish Options		
<input type="checkbox"/> <b>ST</b> Standard	<input type="checkbox"/> <b>ST</b> Standard		
<input type="checkbox"/> <b>WE</b> Wood effect	<input type="checkbox"/> <b>WE</b> Wood effect		
<input type="checkbox"/> <b>MC</b> Metallic	<input type="checkbox"/> <b>MC</b> Metallic		
<input type="checkbox"/> <b>Cus</b> Custom on request	<input type="checkbox"/> <b>Cus</b> Custom on request		

## Finishes

### Standard finishes



**RAL K7 CLASSIC COLORS**  
(80-95% GLOSS): RAL\_ \_ \_ \_

All RAL Classic colors are available with no setup fee.

On your specification submittal, choose your RAL color by entering the 4-digit RAL code (e.g., RAL 3003).



### Wood-effect finishes



### Metallic finishes

