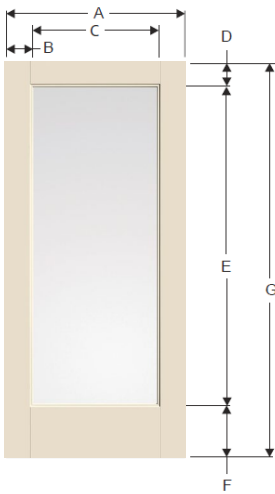


Flush-Glazed Vs. Lip-Lite Frame Comparison

Enliten™ Flush-Glazed | Clean Looks with More View

The Flush-Glazed design eliminates the need for a lite frame and screw plugs, achieving a seamless, consistent finish and offers up to a 16% increase in visible glass area as compared to conventional lite frames, creating an airy, open feeling with larger daylight openings.

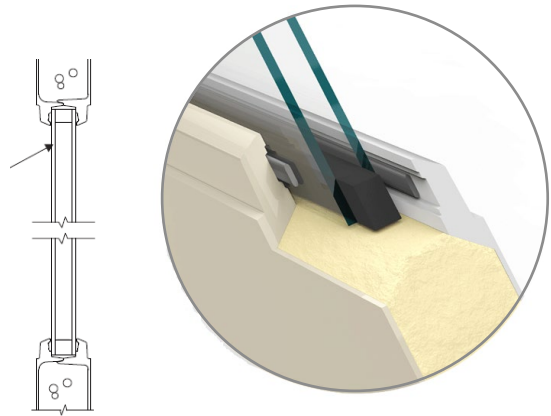


Flush-Glazed Glass

Daylight Opening:

1464	14-1/4" x 63-1/8"	(899 sq.in.)
2064	19-31/32" x 63-1/8"	(1261 sq.in.)
2564	24-3/32" x 63-1/8"	(1522 sq.in.)

Smooth-Star				
Width	Glass	A	B	C
2/0	1464	23-13/16"	4-5/32"	15-1/2"
2/6	2064	29-13/16"	4-5/16"	21-7/32"
2/8	2064	31-13/16"	5-5/16"	21-7/32"
2/10	2564	33-13/16"	4-1/4"	25-11/32"
3/0	2564	35-13/16"	5-1/4"	25-11/32"



Flush-Glazed Glass

Lip-Lite Frame



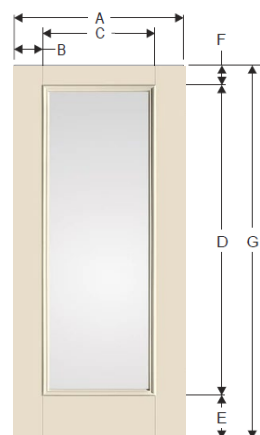
Enliten™ Flush-Glazed Advantages

- up to 16% more glass
- contemporary look
- more airtight
- no chance of Lip-Lite frame shrinkage

Enliten™ Flush-Glazed Warranty Riders

For Construction & Installation – Provides protection in case of accidental glass breakage during residential and multi-family construction or installation. Therma-Tru will replace the flush-glazed fiberglass door or sidelite.

For Homeowners – Provides protection in case of glass-related failures due to manufacturer defect. Therma-Tru will furnish \$300 toward installation and replace the flush-glazed fiberglass door or sidelite



Lip-Lite Frame

Daylight Opening:

1464	13" x 63"	(819 sq.in.)
1664	14-31/32" x 62-31/32"	(941 sq.in.)
2064	18-29/32" x 62-29/32"	(1189 sq.in.)
2264	20-15/16" x 62-15/16"	(1317 sq.in.)

Fiber-Classic and Smooth-Star										
Width	Glass	A	B	C	D	E (6/6)	E (6/8)	E (7/0)	F (6/6, 6/8)	F (7/0)
2/0Δ	1464	23-13/16"	4-1/32"	15-3/4"	65-3/4"	6-27/32"	9-3/16"	-	4-1/8"	-
2/4φ	1664	27-13/16"	4-15/16"	17-31/32"	65-31/32"	6-9/16"	8-29/32"	-	4-1/8"	-
2/6v	2064	29-13/16"	3-31/32"	21-29/32"	65-29/32"	6-11/16"	9-1/32"	-	4-5/32"	-
2/8N	2064	31-13/16"	4-31/32"	21-29/32"	65-29/32"	6-11/16"	9-1/32"	-	4-5/32"	-
2/8	2264	31-13/16"	3-31/32"	23-7/8"	65-7/8"	6-11/16"	9-1/32"	10-5/32"	4-5/32"	7-1/32"
2/10	2264	33-13/16"	4-31/32"	23-7/8"	65-7/8"	6-11/16"	9-1/32"	10-5/32"	4-5/32"	7-1/32"
3/0	2264	35-13/16"	5-31/32"	23-7/8"	65-7/8"	6-11/16"	9-1/32"	10-5/32"	4-5/32"	7-1/32"
3/6ℓ	2264	41-13/16"	8-31/32"	23-7/8"	65-7/8"	6-11/16"	9-1/32"	10-5/32"	4-5/32"	7-1/32"

