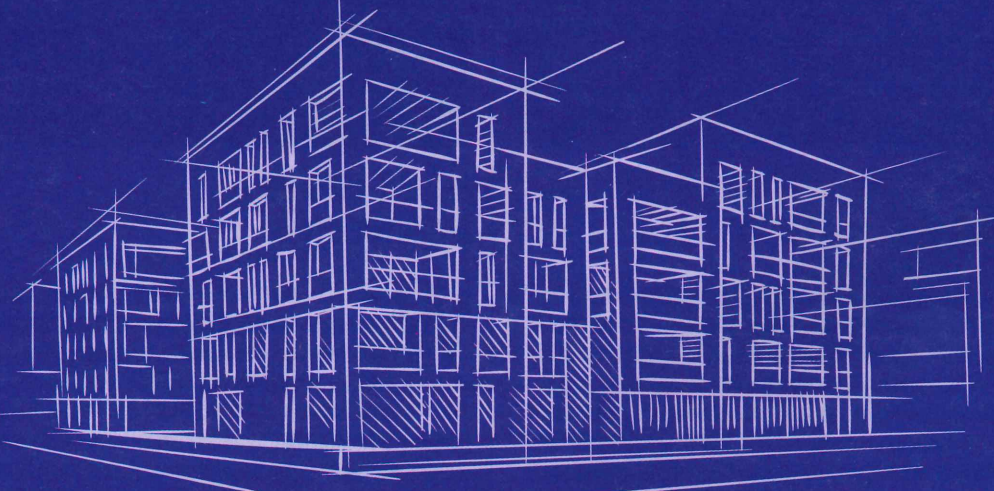




SAN DIEGO BUSINESS JOURNAL  
**OUTSTANDING**



**ARCHITECTURAL  
DESIGNS**





# OUTSTANDING ARCHITECTURAL DESIGNS



## PROJECT: CHILDREN'S PARK

ARCHITECT: **THE MILLER HULL PARTNERSHIP, LLP**

The project programmatic choices were inspired and guided by the community needs in the downtown core of San Diego. After public outreach during the General Plan design phase the design continued to evolve. The existing grove of trees were loved but they were too tightly spaced for the many activities and sightlines needed in the park. The design team took the inspiration of the trees as a major design driver. The park area is a natural play area and built with real timber. As for the building, the shade canopy that designates an outdoor public space has a wood louver ceiling. The wood has been rotated to 'true' east/west as a nod to the way that trees and plants grow with an orientation to the sun's path. This phenomenon is called phototropism; and this concept inspired us to create a phototropic canopy. This project packs a lot into a small footprint. The park itself has a large play area, a bench and lounge area for parents, an adult exercise and games area, a dog park, and the comfort station all in the north half of the park. The comfort station itself has a bathroom attendant room that provides 'eyes on the street' for the majority of the park and keeps the bathrooms in good order. There is a retail area that has large sliding windows out to the canopy area and a maintenance storage area. The building spans two levels to accommodate the sloping site and provide a trash option for the retail building. The material palette is a durable set of materials that are low maintenance. The wood on the project is protected from the sun with aluminum plate to ensure maintenance is minimal even for the wood. All of these elements are oriented so that the building can act as a buffer from the busy road to the east. The project is a demonstration of elevating the utilitarian in materials & program.



## PROJECT: WINSLOW

ARCHITECT: **KTGY**

Winslow is a 379-home luxury mixed-use community in the heart of University Heights, a dynamic San Diego neighborhood. Designed by KTGY, this contemporary collection of apartments and premium retail space encompasses a city block, nestled among tree-lined streets. Winslow revitalizes an underutilized infill site, now a destination that provides much-needed housing, significantly adding to San Diego's rich cultural fabric. With 17,976 square feet of ground-floor retail, Winslow enhances the pedestrian experience and showcases a commitment to vibrant living by adding attractive retail spaces with bright storefront windows and commercial-height ceilings. Winslow's design is a meticulous blend of community input and site dynamics. Tranquil courtyards strategically connect a shared alley to Park Boulevard, offering relief from neighboring residences and the bustling urban environment. Characterized by clean lines and simple forms, the development aligns with the existing community aesthetic while making an aspirational presence on the street. The seven-story podium structure stands as a modern oasis, featuring residences ranging from space-savvy studios to expansive two-bedroom apartments. Each dwelling incorporates luxurious elements including window walls, nine-foot ceilings and stylish finishes. Winslow also offers exceptional amenities, including a resort-style pool, sundeck, grilling stations, pet park and a resident lounge overlooking the neighborhood. Promoting an active, healthy lifestyle, Winslow provides residents with a private fitness studio, co-working space and a bike storage room with a bike repair station. The community sports a cool color palette, angled balconies offering picturesque ocean views, and upscale finishes gracing the ground-floor retail spaces. In seamlessly blending contemporary living with commercial sophistication.



## PROJECT: NAVY SEAL FITNESS & WELLNESS FACILITY

ARCHITECT: **GENSLER**

The design journey for this project started with an invitation to a Navy SEAL graduation ceremony. The Navy SEAL graduation ceremony is a profound and memorable event that honors the dedication, perseverance, and sacrifice of those who have earned the prestigious title of Navy SEAL. It marks the beginning of their journey as elite warriors tasked with some of the most challenging and critical missions in the world. The grit and excellence of the members of this prestigious institution was the core inspiration for this project. Located adjacent to the Petco San Diego Ballpark, the location has great public visibility to impact the capacity to raise funds for the foundation. With LEED and WELL certifications driving the design, the team transformed an existing retail F&B space that had been unoccupied for years. Although the location was great it needed comprehensive updates, but not surprisingly these challenges did not shake a team inspired by our bravest warriors. The fitness space is in the retail F&B suite, and the wellness space is in a suite in the tower above. The spaces needed to feel familiar, but also able to transform the members to a place of healing and mindfulness. The design focused on sustainability, wellness, quality, and approachability. The most important factor was to make the members feel welcome, safe, and comfortable in the space. There was a complex process for site readiness that included updating infrastructure, accessibility and raising a depressed slab on the entire suite. The team worked closely with the engineers and sustainability consultants to create a new canvas to receive the planned program. The Navy SEAL Foundation and our team collaborated with Virginia High Performance, a program designed to optimize the recovery of our Nation's Naval Special Warfare operators who are tackling issues like chronic pain, physical conditioning, cognitive decline, poor diet, and other issues.



## PROJECT: THE KEATON

ARCHITECT: **AO**

The Keaton, a multifamily development under construction in San Diego, tells an inspiring story of innovative design that merges historical reverence with modern urban living. Located on a repurposed industrial site overlooking the historic Montgomery-Gibbs Executive Airport, The Keaton exemplifies how thoughtful design can transform a neglected area into a vibrant residential community while paying homage to its past. Drawing from the rich history of the adjacent airfield, The Keaton's design captures the spirit of aviation pioneers who once graced its skies over 85 years ago. The architecture reflects this heritage through its modern industrial aesthetic, characterized by ascending wood paneling, steel elements, and standing metal seams that evoke a sense of flight. This design narrative not only honors the site's historical significance but also brings a unique and contemporary identity to the development. Designed with young, urban professionals in mind, The Keaton offers 258 apartments showcasing upscale living options, from studios to two-bedroom units. The open-concept floor plans and modern finishes cater to contemporary lifestyles, integrating high-tech conveniences that appeal to the tech-savvy demographic. The development also boasts a wealth of curated amenities, including two interconnected outdoor pool courtyards, a dual-level fitness center, themed clubhouse and lounges, co-working spaces, and a sky deck lounge with views of the airport runway. These amenities not only enhance the resident experience but also foster a sense of community and connection. Modeling the next generation of high-density apartment communities, the design utilizes an innovative hybrid construction typology that leverages the efficiency of wrap buildings and the high-density advantages of podium construction.



# OUTSTANDING ARCHITECTURAL DESIGNS



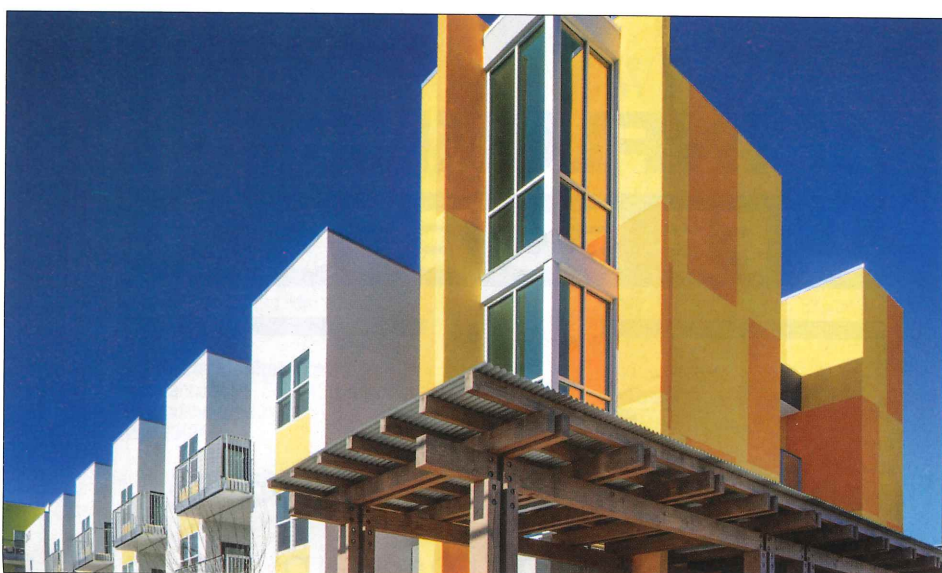
**PROJECT: DIRECTORS SCIENCE PARK**  
**ARCHITECT: DELAWIE**

The design of Directors Science Park is inspired by the striations and layers of the nearby coastal cliffs. Directors Science Park, a five-story, 148,350 SF life science lab and office building, offers dramatic views of Sorrento Valley towards the Torrey Pines estuary and the Pacific Ocean. Intentionally designed outdoor terraces on every floor provide the opportunity to enjoy the magnificent vistas. The exterior lighting highlights the shifting floorplates to further tie the building to its inspiration and the design concept. The interior design of the lobby continues the theme, reflecting natural earth tones and textures with a two-story sedimentary wall accompanied by a cantilevered Lithocrete® concrete stair that serves as the artistic focal point. An understated terrazzo in place and formulated to represent a line in the sand - the transition between the cliffs and the ocean. Epoxy terrazzo with micro-blend aggregates, sediment flecks and mirrored chips represents dry, untouched sand against the cliff. The darker micro-blend terrazzo flows into the elevator cabs, representing sand dampened by the ocean tides and serves as a landing point for a wood-clad soffit and columns reminiscent of a pier. Several design alternatives addressed the need to fit the main building, along with 420 parking spaces, on the hillside site. The design solution resulted in a two and half story below grade parking structure with on-grade parking wrapped around the building. The long, narrow main building with southern exposure provides enhanced control of solar gain energy. As a life science lab and office building, the project needed to address the need for flexibility. The design responded with a maximum capacity of ten half-floor layouts across the five floors. The floor plate and column placing are strategic to allow for a standard lab benching layout.



**PROJECT: EAST REGION CRISIS STABILIZATION UNIT**  
**ARCHITECT: PLATT/WHITELAW ARCHITECTS, INC.**

For people experiencing a mental health or substance-use crisis, the County of San Diego provides crisis stabilization units to deliver services in community-based or hospital settings. For those in the midst of a crisis, being taken to a jail or hospital may not constitute an appropriate level of care. However, going to a place that has been specifically designed and staffed as the first line of intervention will likely yield better results in the short and long term. Platt/Whitelaw is fortunate to be designing its third crisis stabilization unit for the County, first in Hillcrest and Oceanside and now in East County. Our whole team is inspired by the chance to positively impact a sector of society that's hurting. Once home to a bank building, a now-vacant lot in El Cajon is getting a new lease on life as the East Region Crisis Stabilization Unit. We're designing a new, single-story, 14,200-square-foot, Zero Net Energy and LEED Gold Certified building. We're creating a space that provides a sense of safety and wellness. The main crisis stabilization unit space will admit daylight while limiting solar heat gain and provide a direct visual connection to nature. Interior patient spaces will be calming and relaxing, partly because our design includes warm colors and organic, natural patterns. Patients can be part of group activities at the activity room with access to an outdoor patio. Although the East Region Crisis Stabilization Unit is not a residential facility and doesn't provide bedrooms, the main space will provide multiple clusters of three recliners each, with individual partitions to create a sense of privacy and give the client an opportunity to rest in a safe environment. Creating a space that provides a sense of wellness and safety while maintaining the security measures needed for a crisis facility is always a challenge. Nurses need to always have a direct line of sight to clients.



**PROJECT: AMANECEER APARTMENTS**  
**ARCHITECT: STUDIO E ARCHITECTS**

This intergenerational affordable housing development brings much-needed modern housing to the Linda Vista community's dated housing stock. The 96-unit, 5-story Amanecer Apartments serves families and the neighboring Puesta del Sol provides 60 units for seniors. Both communities make the most of their parkside location by orienting the buildings and open spaces towards the park. Amanecer's central courtyard is a family hub for activities with its BBQ and dining area, kid's play structure, and citrus orchard, all ringed by amenities including a fitness center, community room and laundry. Puesta del Sol's 3-story L-shaped building frames a courtyard that features a central specimen tree, community garden planters, outdoor fitness equipment, and a porch swing. A wellness trail surrounds the perimeter of the site to encourage daily walks. Both buildings feature simple, white plaster forms accented with bright colors, textured fibercrete panels and decorative tile and masonry. Each building meets the street in a different way. Amanecer sits up slightly above street level, allowing the parking garage to slip underneath and discreetly hide cars from sight. A colorful oversized portal expresses the main entry and the aperture through the open-air lobby to the courtyard and park beyond. Puesta del Sol's street façade features unit balconies and patios within a generous landscape buffer and welcomes people on to the site via an exposed heavy timber arcade connecting both the sidewalk and. Puesta del Sol's iconic features include a commons building with a butterfly roof and a cheerful checkerboard of color, that is also repeated on the stair tower, where it peels open at the corner to expose storefront glazing that floods the stair with natural light. Amanecer was a complex project that required navigation of multiple hurdles in order to bring it to completion.



**PROJECT: HOLOGIC INNOVATION CENTER**  
**ARCHITECT: AVRP STUDIOS**

The Hologic Innovation Center is the global showroom for Hologic's women's health devices. The clients' objective and our challenge was to design an 'experience' for the people that visit the Center. Scale, light, color, sound, texture and geometry were utilized to create the journey and orchestrate the 'experience'. The physical challenge was space and how to enter the Innovation Center as well as integrating nature. There is only one way to enter the available space as this is in an existing building with other functions surrounding the Center. The client also wanted to ensure that technology was integrated with nature. By creating the 'portal' concept at the sole opening to the space, we were able to create a 'journey' into the space and choreograph 'pods of devices and presentations with nature as da background. In addition to the 'experience' once of the objectives was to integrate sustainable materials and energy efficient lighting, which is integrated throughout. The design solution, given the spatial challenges, was to integrate simple elements; scale, light, color, sound, texture and geometry and orchestrate a 'journey' for visitors. Specific symbolism was minimized as the visitors are global and a universal and a 'journey' for visitors. The lower scale 'portal', the curved geometry, aural sound, blue hued lights and video band, slowly reveal the higher volume showroom 'pods' that present the Hologic devices - giving compression and release experience. Each pod in the show then creates its own presentation to the visitors. Continuing to move throughout the space, the deeper you go, the closer the visitors get to nature - with clear glass views surrounding 200 degrees of the space, the light and views give opportunity to physically connect to the outside and give your senses a break from technology. The central conference room has sliding glass walls so when not in use, affords a clear view and connection to the outside and nature.

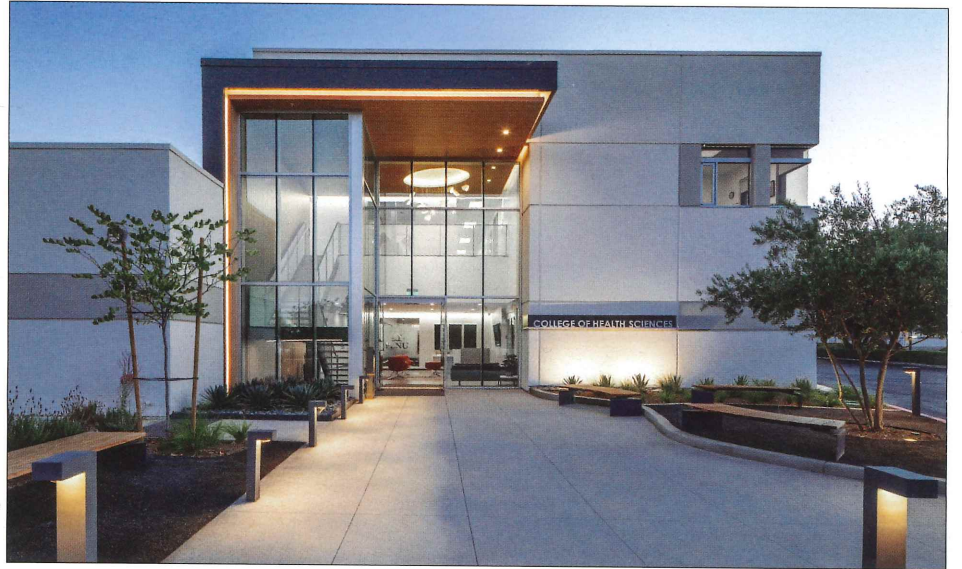


# OUTSTANDING ARCHITECTURAL DESIGNS



PROJECT: **RIDGE WALK NORTH LIVING & LEARNING NEIGHBORHOOD**  
ARCHITECT: **HENSEL PHELPS**

The \$536M Ridge Walk North Living & Learning Neighborhood is home to Thurgood Marshall College. The long history and legacy of Thurgood Marshall continues in the form of an activist culture for its students, celebrating its values of equality and social justice. The architectural expression is reflective of traditional craft and culture, looking to some of the most intricate, beautiful, yet timeless art forms such as basket weaving and garment making to inspire a solution that weaves together ideas, perspectives, and expressions. This vibrant, mixed-use Living & Learning Neighborhood at UC San Diego creates synergy in campus movement, housing, and academic functions for the residents of Thurgood Marshall College, faculty, staff, and students for endless opportunities to explore, discover, and connect. The Ridge Walk North Living & Learning Neighborhood strengthens and connects the UC San Diego campus, acting as a tapestry with revitalized nodes and plazas along Ridge Walk and key thoroughfares to the Historic Grove, Geisel Library, and the heart of campus beyond. The integration of these various threads is visible in the 11.5-acre site, with open spaces intersecting with pedestrian paths, providing scale variety and personality for each of the outdoor spaces while considering both sustainability and human comfort. The mixed-use Building C brings together numerous synergistic programs and contains the continuous flow of students to and from classes alongside the residents of Thurgood Marshall College. Core to the Thurgood Marshall College students' experience on campus, the services, support, and programs now have a new home. All functions have been clustered together with direct access from the terrace, encouraging easy access for all residents.



PROJECT: **POINT LOMA NAZARENE UNIVERSITY'S BALBOA REGIONAL CENTER**  
ARCHITECT: **HED**

HED's makeover of Point Loma Nazarene University's Balboa campus extension is a humble example of innovative design, brimming with inspiration and relevance. Despite a modest budget, HED ingeniously transformed industrial spaces into a vibrant hub for PLNU's College of Health Sciences. The multi-phased buildout of this campus is a partnership with PLNU that strives to implement cutting-edge new technology and programs to support masters degree programs in Athletic Training, Exercise Science, Kinesiology, Sport Performance, Physician Assistant Education and Occupational Therapy. Recently, the team wrapped up phase III and are in progress with planning phase IV of the campus build out, which will include the addition of a new anatomy lab and office expansion. Each phase of design and construction was treated with mindfulness for existing conditions and taking advantage of the existing facility and site. The design team worked to carve out strategic outdoor spaces to directly complement the interior spaces, such as the center for human performance, while recognizing the building's location along a busy road. Careful consideration was given at the front-end to address all site and drainage issues to setup the future phases of development for success.

SAN DIEGO BUSINESS JOURNAL  
**LEADERS**

of **INFLUENCE** in  
**LIFE SCIENCES**  
2024

It's time to celebrate and honor influential leaders in life sciences by acknowledging their contributions and commitment in the July 22nd edition of the San Diego Business Journal. Leaders will be honored at the event on Tuesday, July 30th.

**NOMINATION DEADLINE**

**JULY 5th**

**NOMINATE & REGISTER NOW at SDBJ.COM**