

Kitchen Remodeling Quote Example made with ExtraFlowDoc



www.extraflowdoc.com

Kitchen Remodeling Quote

Quote #:F56CC72EF78F4539

Issued At:06.02.2026

Valid Until:20.02.2026



Created By:

ExtraflowDoc

Matthew Smith

+84 865538347

matt@extraflowdoc.com

4800 Spring Avenue, 19108, Philadelphia,
Pennsylvania, United States

Prepared For:

Gleichner LLC


Gardy Ebbins

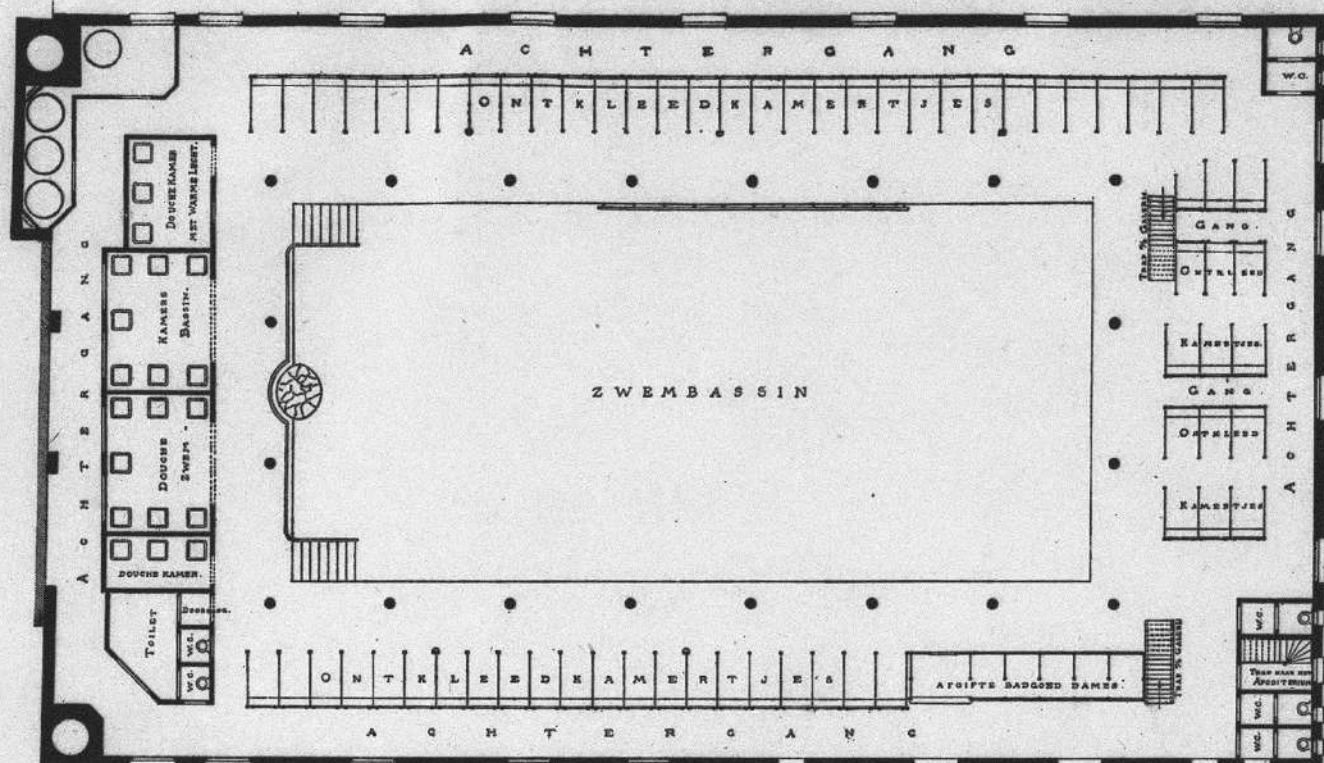
+850 (699) 935-8495

gebbinsr@senate.gov

8541 Havey Lane, Stoughton, WI, USA

Quotation

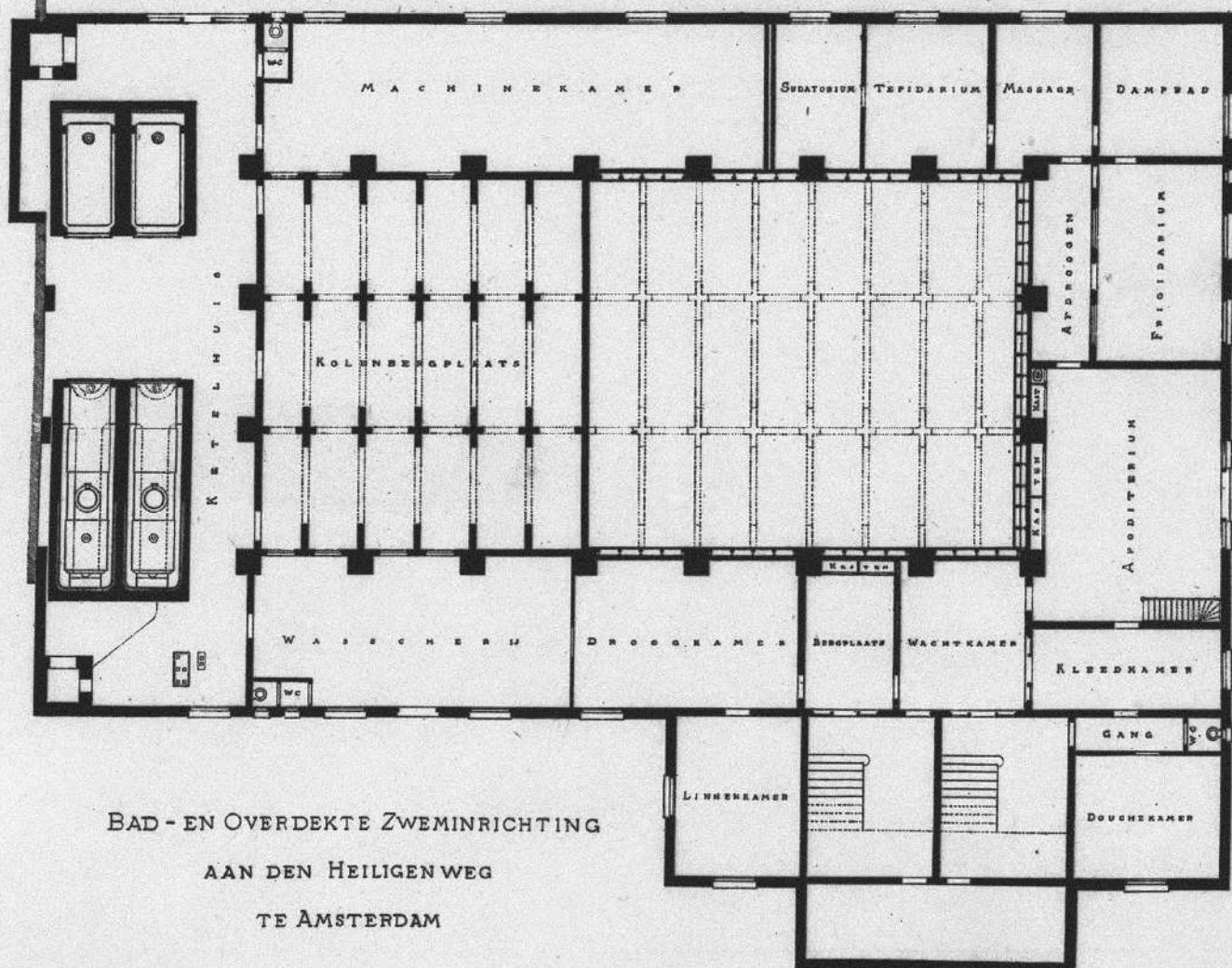
#	Title	Quantity	Price	Disc.	Total
1	Hardwood Flooring Durable oak hardwood, pre-finished	400	\$120	5%	\$45,600
2	Quartz Countertops 	100	\$80		\$8,000
3	Custom Cabinetry We work with trusted suppliers to source materials that meet the highest standards for durability and performance. <ul style="list-style-type: none">● Durability: Our materials are selected for their longevity and resistance to wear and tear.● Eco-friendly options: We prioritize sustainable materials to reduce environmental impact.	20	\$400		\$8,000
4	Energy-efficient Windows Triple-pane windows for improved insulation	4	\$940		\$3,760
5	Smart Lighting	1	\$3,000		\$3,000
6	Stainless Steel Appliances	3	\$3,000	\$600	\$8,400
7	Tile Flooring	300	\$15		\$4,500
8	Marble Backsplash	42	\$60		\$2,520
Subtotal (excl. taxes)					\$83,780
Tax 8% exclusive					\$6,702.4
Total					\$90,482.4



PLAN - HOOG PARTERRE



SOUSTERREIN

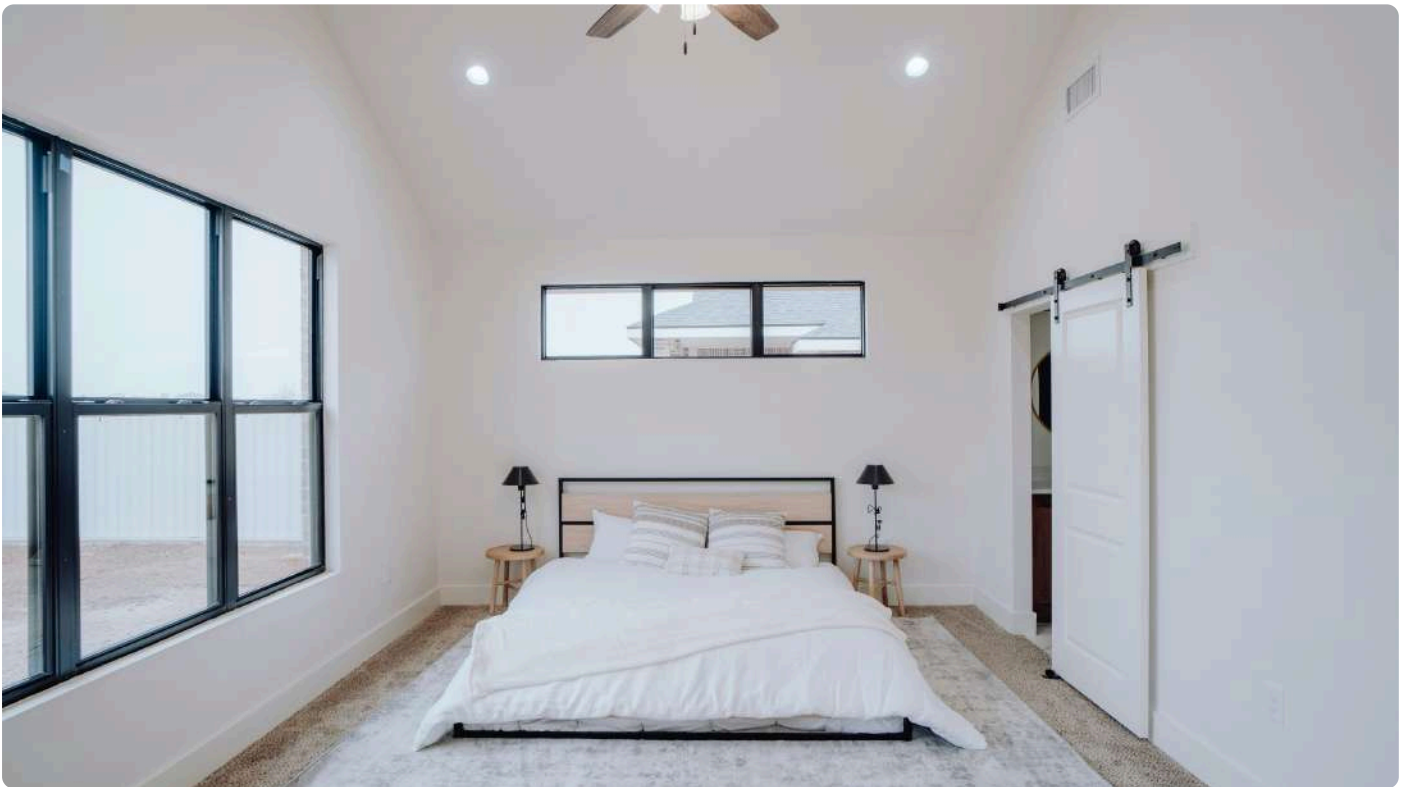


Scope of Work

The **Essential Renovation Package** is designed for homeowners seeking to update their home with essential improvements while staying within a more modest budget. This option focuses on delivering functional upgrades that will give your home a refreshed look without extensive structural changes.

Scope of Work Includes:

- **Interior Painting:** Repainting all rooms with high-quality, low-VOC paints to refresh the home's interior while ensuring healthier indoor air quality.
- **Flooring Replacement:** Installation of new, durable flooring materials, including laminate or engineered wood, across living spaces.
- **Lighting Upgrades:** Replacing outdated fixtures with modern, energy-efficient lighting options to brighten up your space.
- **Basic Electrical Work:** Rewiring or upgrading electrical systems to meet safety standards and accommodate modern needs.



Remodel “Modern Minimalism”

This project focused on transforming a dated kitchen into a sleek, open-concept space. Our team installed custom cabinetry, quartz countertops, and high-end stainless steel appliances, all while improving the layout for increased functionality. The homeowners loved how the space now flows effortlessly, with plenty of room for entertaining.



Living Room Renovation

The homeowners wanted a low-maintenance solution that provided ample space for outdoor entertaining and relaxation. Our team worked closely with them to design a multi-level deck that blends seamlessly with the natural landscape.



Outdoor Oasis

In this living room remodel, we created a warm, welcoming space featuring a new fireplace with a custom-built mantel, hardwood floors, and integrated smart home features like remote-controlled lighting.

Terms & Conditions

Before starting your renovation, we believe in ensuring complete transparency. Our terms and conditions are designed to protect both parties and ensure smooth project execution.

Payment Terms

- A **30% deposit** is required before work begins.
- Progress payments are due at key milestones, which will be outlined in the project schedule.



Project Timelines

While we make every effort to complete projects on time, factors such as **weather delays** or **material availability** may impact the final completion date. Any changes to the timeline will be communicated promptly.

Change Orders

If you wish to make changes to the scope of work after the project has begun, these changes must be documented in a **written change order** and may result in additional costs.

Quotation B

#	Title	Quantity	Price	Tax	Total
Materials					
1	Concrete	10 000	\$25	6% Excl.	\$250,000
					
Labor					
2	Team	300	\$150	8% Excl.	\$45,000
					

Subtotal (excl. taxes)	\$295,000
Tax 6% exclusive	\$15,000
Tax 8% exclusive	\$3,600
Total	\$313,600

Quatation C

#	Title	Quantity	Price	Total
1	Beautiful House	1	\$250,000	\$250,000

A modern single-family home in a quiet American suburban neighborhood, designed for comfortable everyday living. The house features 3 spacious bedrooms and 2 full bathrooms, with approximately 180 m² (1,940 sq ft) of living space. An open-plan layout connects the living room, dining area, and kitchen, creating a bright and airy interior filled with natural light. Large windows overlook a private backyard, ideal for family gatherings or outdoor relaxation. The exterior combines classic siding with a welcoming front porch and an attached two-car garage, reflecting a clean and timeless American home style.

Key features:

- 3 bedrooms, 2 bathrooms
- ~180 m² / 1,940 sq ft living space
- Open-plan kitchen and living area
- Attached garage and private backyard



Subtotal (excl. taxes)	\$250,000
Disc.	- \$30,000
Sales Tax 6% exclusive	\$13,200
Total	\$233,200

Why ExtraflowDoc?

Benefit	What it means for contractors	Why ExtraflowDoc helps
Faster estimates	Quotes are ready in minutes, not hours	Templates + in-Pipedrive editor
Fewer mistakes	No missing items or wrong totals	Structured line items & auto totals
More deals closed	Professional quotes build trust	Clean, branded documents
Clear scope for clients	Less back-and-forth and disputes	Detailed breakdown per job
Works inside Pipedrive	No tool switching during sales	Fully embedded in Pipedrive
Easy revisions	Update quotes without starting over	Versioning & quick edits
Mobile-friendly workflow	Quote on site or after inspection	Works on laptop & tablet

Payment Details

Bank Name: XXXXXXXXXXXXXXX

Bank Address: XXXXXXXXXXXXXXX

Account Holder Name: XXXXXXXXXXXXXXX

Bank Account Number or IBAN: XXXXXXXXXXXXXXX

SWIFT/BIC Code: XXXXXXXXXXXXXXX

Currency of the Account: XXXXXXXXXXXXXXX

Routing Number: XXXXXXXXXXXXXXX

Sort Code: XXXXXXXXXXXXXXX

Bank Code / Transit Number: XXXXXXXXXXXXXXX