



# YOUR TECHNICAL EXPERT IN HI-TECH GREENHOUSE FARMING

Complete Greenhouse Solution For  
Maximum Efficiency & Yield

## 14 YEARS OF GREENHOUSE EXCELLENCE



## FAN & PAD GREENHOUSE

A "fan & pad" cooling system is most popular mechanical cooling method for greenhouse. During summer, the temperature can be reduced 5 to 15 degrees & in winter it protects your crops from cold and maintain humidity.

DESCRIPTION	Span	Bay	Gutter Height	Top Height	Top Vent	Side Vent
PARAMETER	8 mtr	4 mtr	4.5 mtr	6 mtr	NA	NA

**APPLICATION:** Hydroponics, Aquaponics, Exotic Vegetables, Exotic Fruits, Temperate Fruits & Flowers, Tissue Culture, Mist Chamber



## NATURALLY VENTILATED GREENHOUSE

Naturally Ventilated greenhouses effectively save energy by managing shade, temperature and humidity. By utilizing the hot air differential pressure, warm air is kept at the top, reducing temperature & humidity levels ideal for flowers & crops requiring lower humidity. This design is widely adaptable & suitable for use worldwide.

DESCRIPTION	Span	Bay	Gutter Height	Top Height	Top Vent	Side Vent
PARAMETER	8 mtr	4 mtr	4 mtr	6.8 mtr	1 mtr	3 mtr

**APPLICATION:** Exotic Vegetables, Ornamental Plants, Medicinal Plants, etc.



## DOME SHAPE NET HOUSE

Shade Net houses provide excellent cross ventilation and growth for various vegetable crops, including tomatoes, capsicum & cucumbers, as well as flowers and ornamentals. They offer adjustable shade percentages for different crops & protect against hail, excessive sunlight & wide range of insect attacks.

DESCRIPTION	Span	Bay	Gutter Height	Top Height	Top Vent	Side Vent
PARAMETER	8 mtr	6 mtr	4 mtr	5.5 mtr	NA	NA

**APPLICATION:** Exotic Vegetables & Nursery Holders



## WIRE ROPE NETHOUSE

This type of net house is a low-cost solution and helps to extend the growing season or permits off-season production by way of controlling light, temperature, humidity, carbon-dioxide level and nature of root medium. This is low-cost design.

DESCRIPTION	Span	Bay	Gutter Height	Top Height	Top Vent	Side Vent
PARAMETER	8 mtr	6 mtr	4 mtr	4 mtr	NA	NA

**APPLICATION:** **Mainly Use For Nursery Holders & Exotic Vegetables, Fruit orchards, Extra large size structures**



## FLAT TYPE NETHOUSE

A flat net house structure is a light-weight frame with poles and cables that support the net & air vents are covered with nets, or all the greenhouse walls are made of nets that are used to protect crop from insects & weather damage. This is cheaper in compare to dome type nethouse.

DESCRIPTION	Span	Bay	Gutter Height	Top Height	Top Vent	Side Vent
PARAMETER	6 mtr	4 mtr	4 mtr	4 mtr	NA	NA

**APPLICATION:** **Exotic Vegetables & Nursery Holders**



## SPANISH TUNNEL

This type of multi span tunnels are used mainly for berries cultivation. This structure allows maximum ventilation and protects crop from direct sunlight and rain.

DESCRIPTION	Span	Bay	Gutter Height	Top Height	Top Vent	Side Vent
PARAMETER	8 mtr	4 mtr	3 mtr	5 mtr	NA	OPEN

**APPLICATION:** **Mainly for Blueberry, Raspberry, Banana, Figs etc.**



# SOILLESS & COCOPEAT MEDIA PROJECT

## ABOUT

Cocopeat is a renewable and sustainable material that is made from coconut husk. It has many benefits over traditional soil and can be used to create a cocopeat growbag turnkey project.

The cocopeat growbag turnkey project is the perfect solution for greenhouses where there is no access to soil or for people who want the benefits of cocopeat but don't have the time or money to put into a full-scale project. The cocopeat growbag is made up of 100% cocopeat and has the ability to store water, air and nutrients for plants.

## BENEFITS

- 🚫 Does not require any digging & heavy preparations.
- 🌱 It is an eco-friendly material, easy to install in any type of non-fertile land.
- 🌱 As it can be easily wet and re-wet, a grow bag absorbs water readily and has a water holding capacity of 77%.

## COCOPEAT CULTURE PROJECT TYPES:

- ✅ Grow Bags
- ✅ Grow Slabs
- ✅ Through Beds



## COMPARISON BETWEEN GROWING IN SUBSTRATE & SOIL

FEATURES	SUBSTRATE	SOIL
Root zone space	Limited to the substrate Volume	Unlimited
Available water	Limited by the substrate volume and water capacity	Dependent on soil type
Irrigation water tension	15-20 mili-bar	20-50 centi-bar
Nutrition	NPK + micro elements	NPK
EC & pH	Can be controlled	Uncontrollable
Irrigation system	Dense and precise	Standard
Nutrition system	Relative and controlled*	Standard

# HYDROPONICS

Hydroponics is a type of agriculture that does not require soil. It has the potential to grow plants in an efficient and sustainable way.

Hydroponic System uses water solution as the nutrient for plants, that means it can be used to grow any plant all year round. In addition, hydroponic uses less water than traditional farming methods because the water is recycled in a closed system.

## Benefits :

- ✔ Require less space than traditional farming methods
- ✔ Plant can grow with up to 98% less water than traditional growing methods
- ✔ You can control your own micro-climate in hydroponic

## Hydroponic Types :

- ✔ Flat Beds
- ✔ DWC (Deep Water Culture)
- ✔ A-Frame
- ✔ Dutch Buckets
- ✔ Indoor Set-Up
- ✔ Aquaponics



# IoT & AUTOMATION SYSTEM

This is a climate and irrigation control computer system for greenhouse growers for flowers and vegetable crops. This program can control the heating and cooling of the water and air in different zones. You can control the temperature and humidity levels during day and night, as well as CO<sub>2</sub> systems. You can apply adequate nutrient solutions with scientific technology.

Smart Farming offers real-time and precise insights into several natural process analytics in the Greenhouse industry. Greenhouse using IoT nurtures sustainable farming businesses that enhance benefits for greenhouse owners, farmers, private institutions, and government organizations, Agriculture Universities, seed development companies etc.

## Our Automation System Includes:

- ✔ IoT System with Weather Station
- ✔ Climate & Fertigation System
- ✔ Fogging & Misting System for Moisture Control
- ✔ Auto Sliding Net Operation
- ✔ Auto Side Curtain Operation
- ✔ Air Circulation Fans Control



# WHY SHOULD GO WITH CLUSTER GREENHOUSE PROJECT?

- ✔ REDUCING CAPITAL COST
- ✔ OPTIMUM UTILIZATION OF LAND
- ✔ REDUCING COST OF PRODUCTION
- ✔ RESOURCES UTILISED IN BETTER WAY
- ✔ MINIMISING RISK
- ✔ CAN GROW MULTI CROPS
- ✔ VALUE ADDITION IS POSSIBLE
- ✔ OPENS GATE TO GLOBAL MARKET



## GATE TO GLOBAL MARKET

-  NETHERLANDS
-  UNITED STATES OF AMERICA
-  MIDDLE EAST COUNTRIES
-  AUSTRALIA
-  SINGAPORE
-  RUSSIA
-  UAE



# IoT (INTERNET OF THINGS)

## EMPOWER ANALYSIS OF SOIL AND CLIMATE

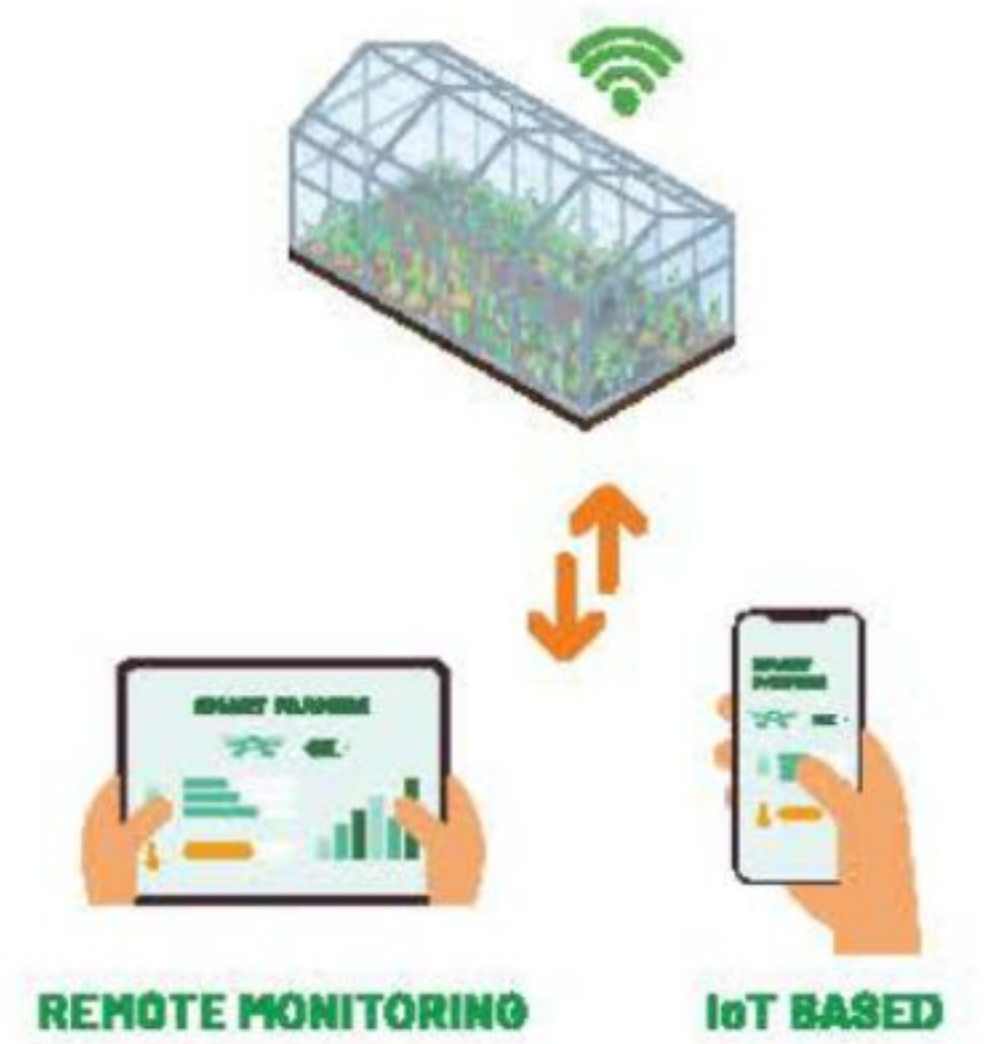
With the help of IoT in the greenhouse, lighting intensity, temperature, humidity & carbon dioxide levels are measured and studied through electronic and environmental sensors & data collected are exported to the computer. The stored data is also accessible through the Cloud.

## EFFECTIVELY IMPROVE CROP GROWTH

Using a precision agriculture model in a greenhouse, growers can observe months ahead and use collected data to predict suitable crop variations for the season and ideal planting times.

## MANAGE PEST POPULATION TO ELEVATE FARM PRODUCTION

Unwanted pests can wreak havoc on your greenhouse crops, affecting both quantity & quality. By implementing IoT Smart Farming with pest management strategies, you can take control and elevate your farm production to new heights.



### PROTECTION FROM:



## AGRONOMY

Technology alone is not enough without the right crop knowledge. Our agronomy support combines scientific expertise with practical field experience to guide farmers at every stage of crop growth. From crop planning and soil preparation to nutrition management, pest control and harvesting, our agronomists provide customized solutions based on crop type and local conditions.

### Our Agronomy Services Include:

- ✔ Crop selection & planning guidance
- ✔ Disease & pest management support
- ✔ Fertigation & nutrient management plans
- ✔ Regular crop monitoring & advisory
- ✔ Soil & Water Analysis
- ✔ Maximum yield & profitability



 **100% TAX FREE INCOME**

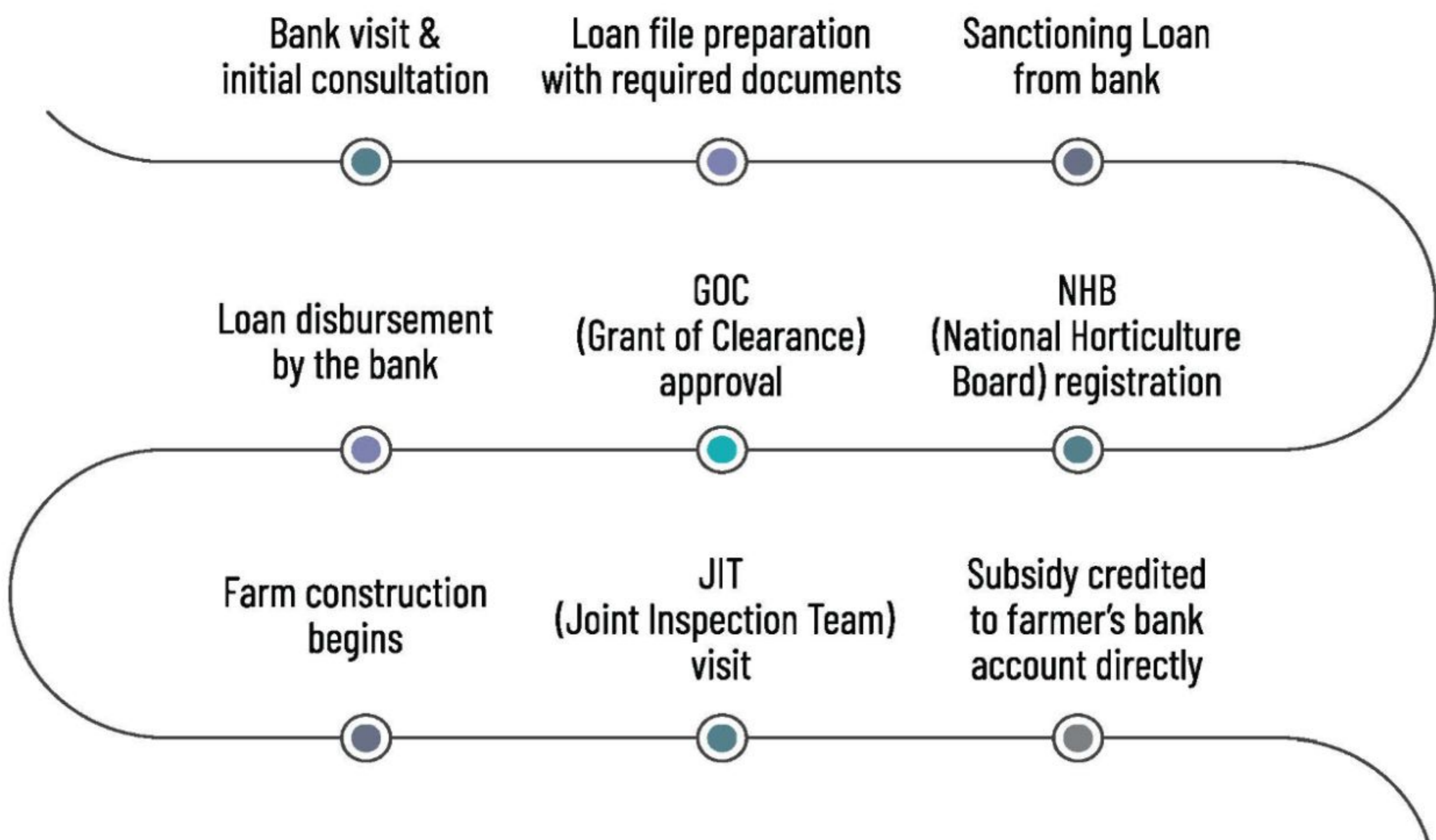
 **UP TO 90% BANK LOAN FACILITY & 3% INTEREST SUBSIDY BY AIF**

 **UP TO 50% GOVERNMENT SUBSIDY FACILITY**

 **UP TO ₹ 2 CRORE COLLATERAL FREE LOAN UNDER CGTMSE**



## SUBSIDY PROCESS



# CLUSTER GREENHOUSE PROJECTS ACROSS WORLD



**900+**  
**PROJECTS**



## SUGGESTED CROPS Which Gives You ROI UPTO 45% in Greenhouse



**COLORED CAPSICUM**



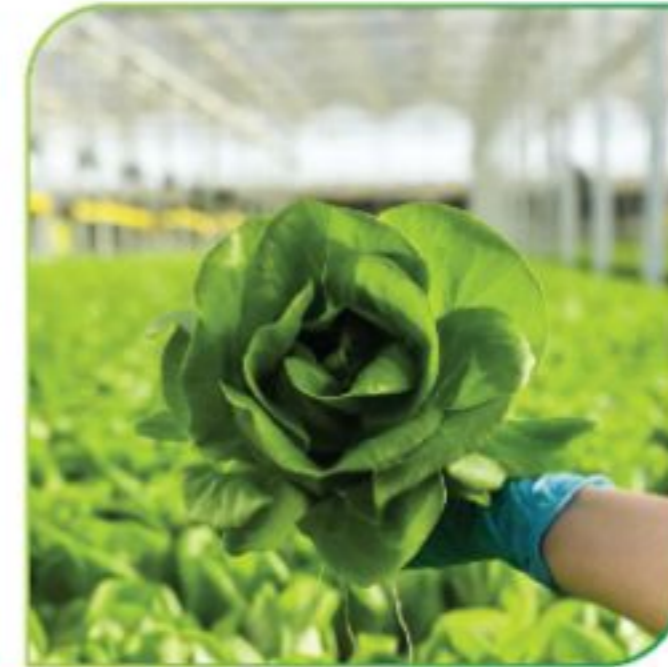
**CUCUMBER**



**CHERRY TOMATO**



**BROCCOLI**



**LETTUCE**



**ZUCCHINI**



**GERBERA**



**CARNATION**



**GYPSOPHILA**



**DUTCH ROSE**



**ORCHID**



**CHRYSANTHEMUM**



**BLUEBERRY**



**MUSK MELON**



**STRAWBERRY**



**TURMERIC**



**ANTHURIUM**



**LILIUM**

# OUR CORPORATE CLIENTELE



More Than 3.5 Million Sq. Mt. build up Area of Greenhouse Projects Completed by 2025.

# OUR TECHNICAL PARTNERS & ASSOCIATES





+91 98984 01004  
+91 84908 01004

keishagreens.mktg@gmail.com  
info@keishagreens.in

www.keishagreens.in

HQ: 815, Swati Clover, Sardar Patel Ring Road, Near Shilaj Circle, Thaltej, Ahmedabad, Gujarat - 380059

Factory: Plot- 11, Yashraj Industrial Plotting, Opposite Mayur Woven Gate, Khatrej Kalol Road, Moti Bhojan, Gandhinagar, Gujarat - 382721



scan to know more about us