



Voyager III ^{NEW}

 **Belmont**
The Beauty of Dentistry

FREE 5 Year Warranty

for Voyager Dental Chairs and Dental Units, and Dental Operating Lights.
Visit belmontdental.co.uk or refer to the back cover for further details.

Voyager III

Key improvements

Improved vacuum air-flow
Chair base and delivery arm re-designed
Chair ergonomics and comfort improved
700 Series light (720) with touchless sensor available as standard

Key features

Ambidextrous
Ideal console arrangement for Assistant's 'Preparation zone'
Below-the-Patient swing-arm delivery system
Mobile delivery systems options
Seamless upholstery
Standard or Ultrasoft upholstery colour options
Air operating system
Upgradeable Operator's Console functionality

Unit-mounted Operating Light options

720SLR or 300 LED

Upgrading and accessorising

Belmont's range of factory built-in options can be used to increase the functionality of a treatment centre and the services that your Practice offers to the Patients. Visit belmontdental.co.uk or see our price list for further details.

Specification

135kg max. Patient weight | 480mm min. seat height | 780mm max. seat height

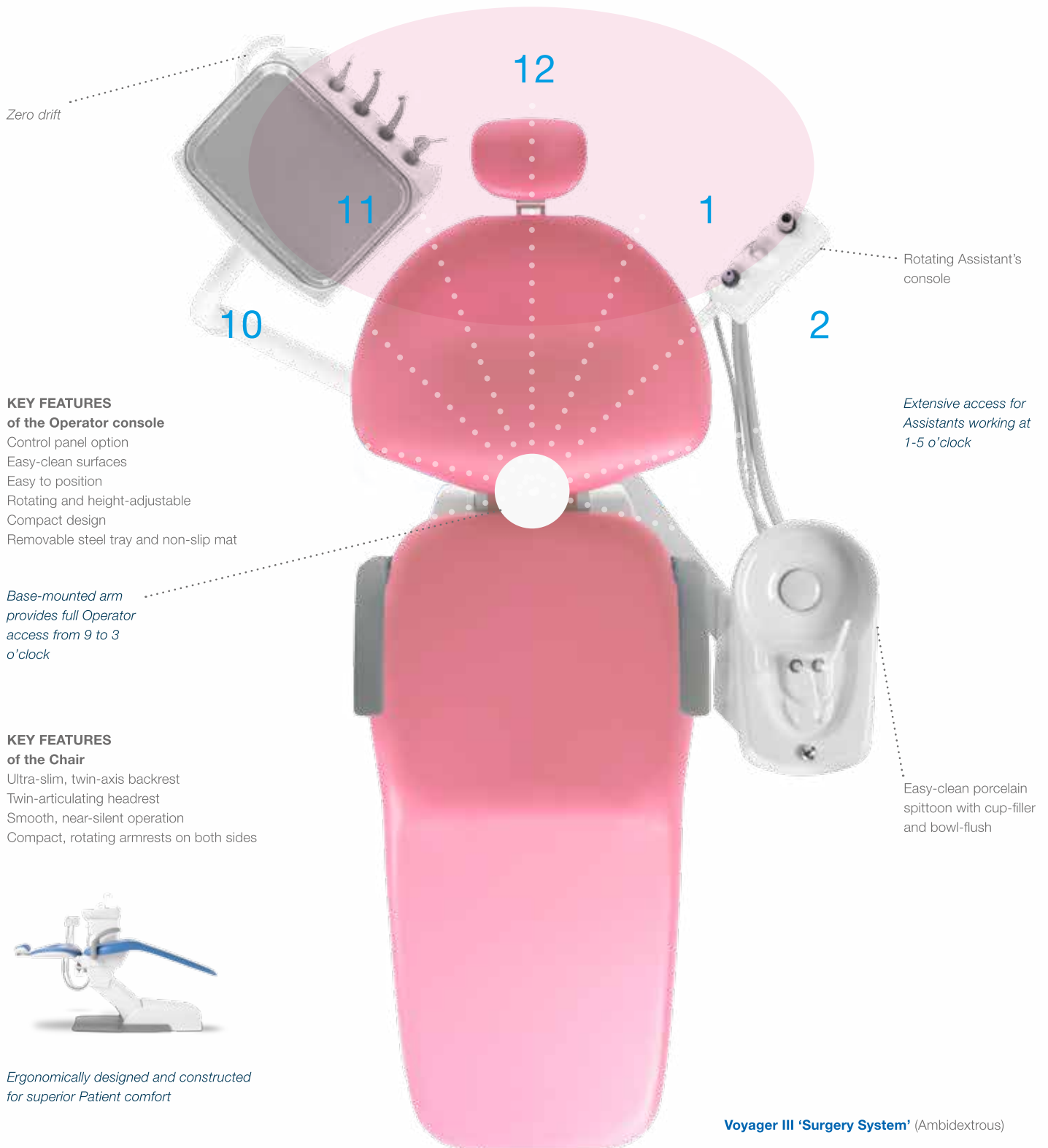
Very versatile and compact ambidextrous treatment centres,
designed and built for the most demanding working environments.



Voyager III **ambidextrous treatment centres**

Understated versatility & value

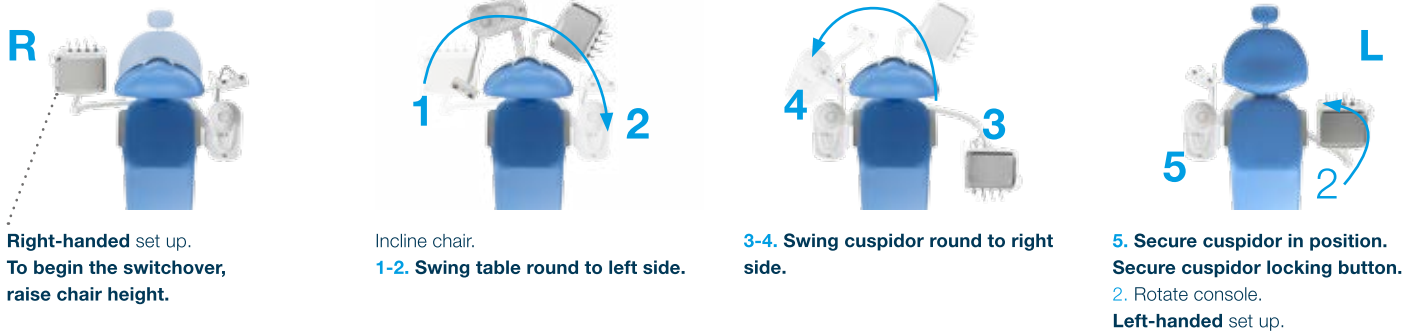
Voyager III's versatile Below-the-Patient delivery system and ultra-slim backrest design eliminate physical stresses associated with some treatment centres.



Left- or right- anytime

Switchover in no time at all

The central pivot design enables the very easy changeover procedure and provides 100% equality for left- and right-handed Operators.



Be more welcoming to every Patient

Obstruction-free zone
for easy entry and exit

Compact, rotating armrests and a low chair position ensure a highly accessible entry

Below-the-Patient advantages

Ready to welcome the next Patient, instruments are out of sight and preparation has begun.



Operator's console is discreetly positioned behind the chair in the Assistant's 'Preparation Zone'

Preparation zone

Cleaning and preparation can proceed during consultation >



Easy-clean vacuum filter
with detachable tubings

Hygiene-maintenance is easy with
the consoles and light gathering
together compactly behind the chair.



Be more efficient

Intelligently designed for a comfortable and compact, easy-clean working environment.



Compact, versatile delivery system offers useful working positions all the way around



Consultation zone

An efficient workflow can proceed calmly during cleaning and preparation processes >

Our advancement of Below-the-Patient delivery system ergonomics realises a greater efficiency of time, space and energy. A level of console versatility yet unseen. Your every task becomes easier; less reaching, a new calmness and clear lines of communication. This is what we strived for, a better daily operation for all.

Compactness

Voyager III's footprint is remarkably compact, sparing valuable space, demanding less energy to operate and improving communication at all stages of surgery

Control is simple

Control chair movements and instruments at the foot-controls. Voyager III is an uncluttered, simple and reliable working partner which allows the Operator full control with the option of mounting a control panel on the Operator's console.



320 LED Operating Light

Foot control for instruments and chair

Flexible options to suit

Voyager III 'SP' ambidextrous chair and cuspidor



Operator's control panel offers two presets, Last-Position Memory, Auto-Return and manual control for chair movements (optional)



Voyager 'MC'
Mobile Cart



Voyager 'M'
Module

720SLR for Voyager III

KEY FEATURES

Unit-mounted for Voyager III
White natural beam (4,200 Kelvin)
3 light settings:
Low (18,000 Lux), High (28,000 Lux) and
Composite Curing Safe Mode (at 8,000 Lux)
650mm focal distance
Touchless sensor switch
Patient mirror
Auto ON/OFF with preset chair positions
Halogen bulb
Twin-axis head movement



650mm focal distance
and the very compact
light head allow exten-
sive working space for
the dental team

Light intensity button and indicator: soft-push-up button is easily and hygienically activated with the back of a hand



320 LED for Voyager III

KEY FEATURES

- Unit-mounted for Voyager III
- White natural beam (5000 Kelvin)
- Stepless intensity control:
3,100 to 28,000 Lux
- 650mm focal distance
- Composite Curing Safe Mode (at 4,300 Lux)
- Touchless sensor switch
- Auto ON/OFF with preset chair positions*
- 5 LEDs
- Triple-axis head movement



Unique stepless control allows adjustment to any light intensity between 3,100 and 28,000 Lux



^{years}**5** Our warranties are extended and **FREE**

On condition that the purchaser returns the Extended Warranty form to Takara Belmont (UK) Ltd, the Standard Warranty will be extended to ~ **5 Years** for Voyager Dental Chairs and Dental Units, and Dental Operating Lights. **2 Years** for Intra-Oral X-Ray equipment.

Standard Warranty Policy – All Belmont products are guaranteed against mechanical, electrical and workmanship faults, under normal working conditions, for a period of one year from date of delivery. Paintwork, plating, natural wear/tear of all tubings are not warranted unless they are proved to be defective at time of delivery. OEM factory built-in options (i.e. scalers, motors and CVS kits) carry a warranty as provided by the individual manufacturer.



belmontdental.co.uk

@BelmontDentalUK

London showroom 020 7515 0333

Manchester showroom 0161 743 9992

All showroom visits by appointment only

The manufacturers reserve the right to alter the specifications without prior notice.

Ref_BelmontUKWireforks_2015.10.

