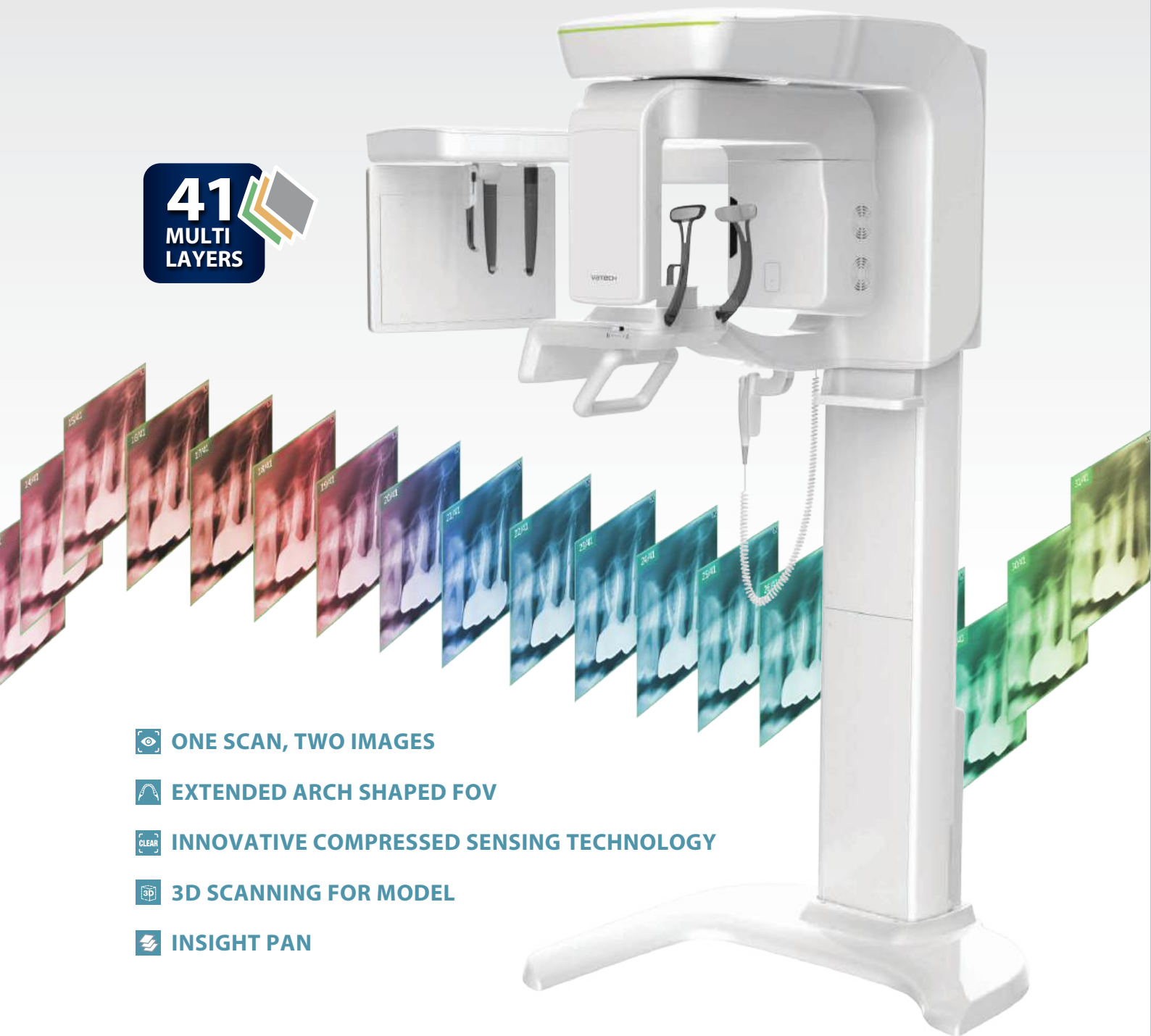


Smart Plus™

41
MULTI
LAYERS



ONE SCAN, TWO IMAGES



EXTENDED ARCH SHAPED FOV



INNOVATIVE COMPRESSED SENSING TECHNOLOGY



3D SCANNING FOR MODEL



INSIGHT PAN

SMART INNOVATION

ONE SCAN, TWO IMAGES

One scan with the Smart Plus gives you not just a CT image, but also an Auto Pano image. This means, patients who require both images do not need to undergo two x-ray scans. Also, CT and Auto Pano images are displayed within one viewer.



* Conventional panorama mode is provided.



[2D AND 3D IN ONE VIEWER]

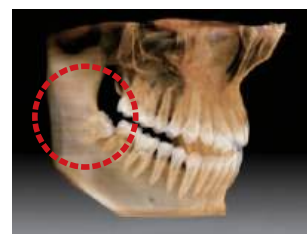
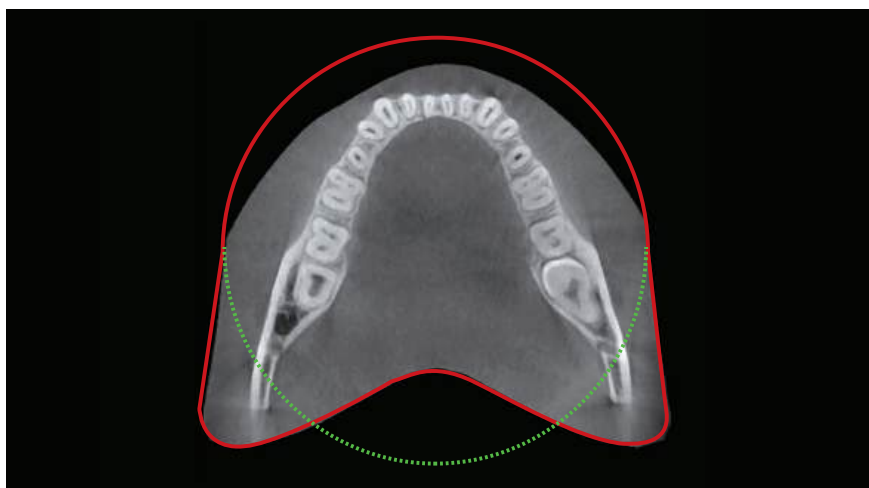
Viewing 2D and 3D images together provides many benefits. There is no need to utilize two different software programs and the one viewer feature presents a professional look for your patients.

This layout helps patients better understand the images, which will eventually result in increasing acceptance rates.



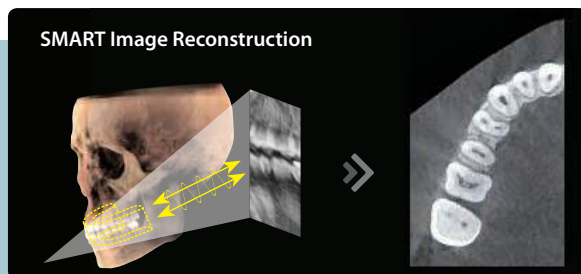
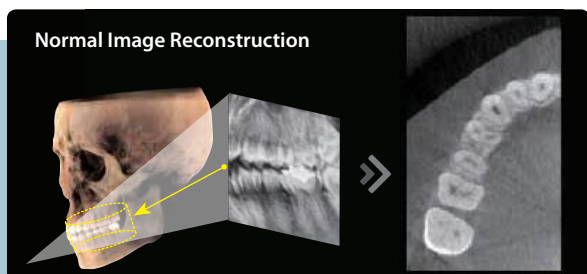
EXTENDED ARCH SHAPED FOV

The innovative FOV of the Smart Plus provides an arch-shaped volume, which shows a wider view of the dentition compared to other devices of the same FOV. When a tooth is lying on its side, there is a high possibility that the tooth will be cut out of the image. The “arch-shaped volume” eliminates this possibility and shows the hidden dentition area.



INNOVATIVE COMPRESSED SENSING TECHNOLOGY

3D image quality has dramatically improved based on the innovative image reconstruction technology.



3D SCANNING FOR MODEL

3D model scanning enables users to store plasters as digital models.

DIGITIZED ONE-STOP CLINIC



CAD/CAM integration
• Sufficient level of detail for surgical guide design



Specially designed Jig
• Stable platform from partial model to full model scanning

* 3D scanning for Plaster Cast with FOV 10x8.5 (cm)

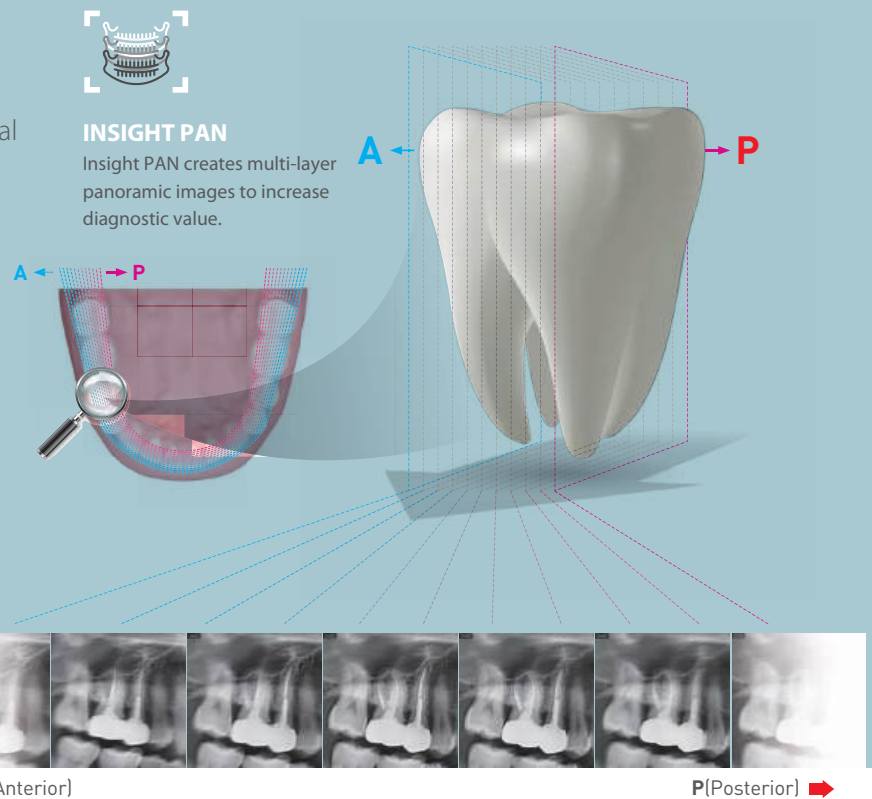
ADVANCED IMAGE SOLUTION WITH INSIGHT PAN

The next evolutionary step forward in panoramic imaging.

The Smart Plus is capable of taking a multi-layered panoramic image called an Insight Pan which provides a unique, in-depth look across a single focal trough.

Since each patient may have a slightly different arch, conventional panoramic images may occasionally miss important details which land outside of a single focal layer.

Insight Pans are capable of capturing multiple-layered images, ensuring that all details are captured in a depth-added panoramic image.



MINIMIZE MOTION ARTIFACTS WITH RAPID CEPH TECHNOLOGY

The next step in cephalometric technology, Vatech's new Rapid Ceph minimizes motion artifacts and enables faster diagnostic workflow while providing the highest quality digital images.

GREAT CLINICAL CARE WITH RAPID CEPH TECHNOLOGY



EZDENT-I: QUICK AND EASY DENTAL IMAGING SOFTWARE

EzDent-i provides a wide array of functions designed to streamline the dental practice's workflow. It conveniently provides tools for specialized diagnosis and consultation via our easy-to-use user interface.



Diagnosis

- Depth added diagnostics with Insight Pan

Simulation

- 2-click implant simulation
- Natural tooth whitening simulation
- Simplified canal tracing

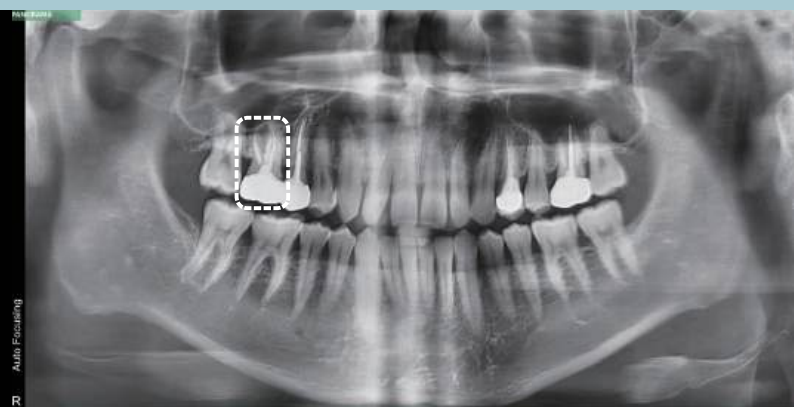
Consultation

- 244 consultation videos
- Add user-created consultation content

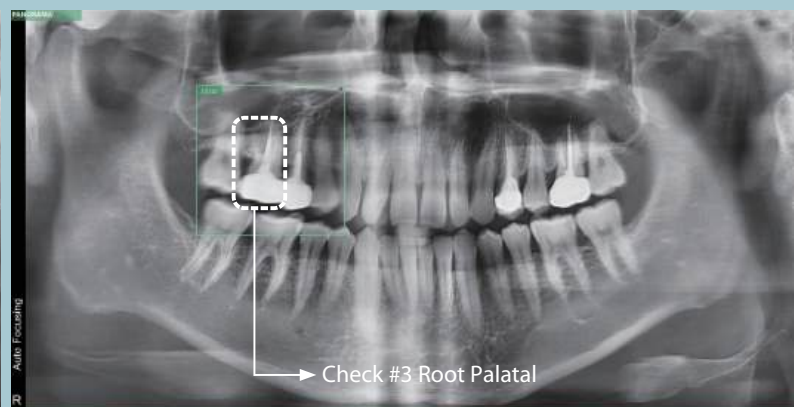
WHAT IS INSIGHT?

The next-generation in panoramic technology, Insight Pans allow doctors to obtain never before seen, in-depth diagnostic information from the anterior to posterior on a digital panoramic image.

The Insight feature allows doctors to explore their region of interest, giving them the capability to find mesiobuccal, distobuccal, and even palatal root information.



STANDARD PANORAMA



INSIGHT FEATURE

Use the Smart Plus's Next Generation Panoramic Technology to Discover:

- ☒ Hidden multi roots and canals
- ☒ Location of pulp and gutta-percha
- ☒ Broken files or root fractures

PRODUCT CONFIGURATION

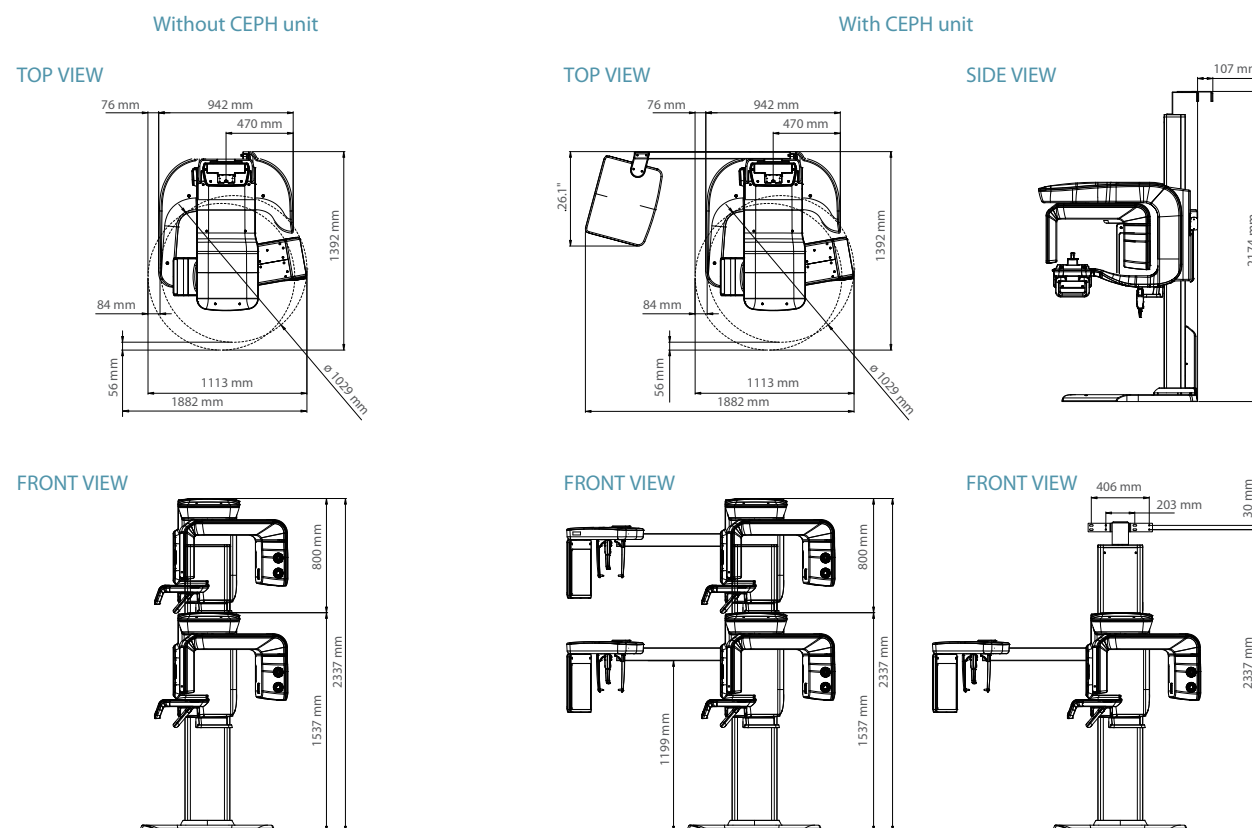
	CBCT	PANO	CEPH
Smart Plus	•	•	
Smart Plus RC	•	•	•

SPECIFICATIONS (Smart Plus : **PHT-35LHS**)

Function		CT (with Auto Pano) + Pano + Ceph + Model Scan
Focal Spot		0.5 mm (IEC 60336)
CT FOV Size		5x5 cm / 10x8.5 cm (Anatomical 12x9 cm) / 10x7 cm
Voxel Size		0.08 mm / 0.12 mm / 0.2 mm / 0.3 mm
Scan Time	CT	18 sec
	Pano	14.1 sec / 7 sec
	Ceph	1.9 sec / 3.9 sec
Gray Scale		14 bit
Tube Voltage		60 ~ 99 kV
Current		4 ~ 16 mA
Weight	With Ceph unit	357.1 lbs

*The specifications are subject to change without prior notice.

DIMENSIONS [Unit: mm]



***An additional 3 inches (76.2 mm) of space is required behind the unit for wall mount bracket installation (mandatory unless there is a base mount installation).**