

C50

FULL HD CAMERA



**Your View.
others can
only imagine**

 **acteon**



Remarkable clinical vision

FULL HD

Clearer, more
detailed
images

- **Confident** diagnosis
- Increased case **Acceptance**

VISION MODE

True, vibrant
natural
colors

- **Clinical Evidence**
Patients can see &
understand
- Demonstrate teeth stain
Educate Patients,
Support Treatment

AUTO FOCUS

Quickly gain
better
image clarity

- **Save Time**
Faster, accurate
images
- **Ease of Use**
For everyone
in the practice



- **Enhanced**
clinical evaluation
- **Strengthen Communication**
Between clinicians & patients

- **User-friendly**
Intuitive design & easy operation
- **Quick Switch**
One second to switch modes

MACRO VISION

Greater
Visibility
of fissures & caries

DEPTH OF FIELD

FIVE Modes*
IN
ONE Camera

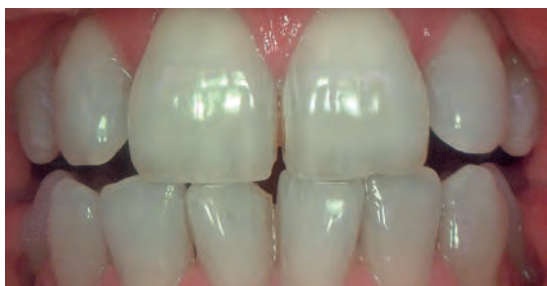
*The 5 modes include macro, portrait, smile, tooth and intraoral



Everything you need to see one robust solution

Unprecedented vision with Daylight mode

- Improved interpretation of tooth shades with rendering of natural colors.
- An aid to controlling pathology and post-treatment, facilitating the follow-up process.



Exclusive macrovision performance

- Extreme visibility for ultra-precise diagnosis.



And more...

- Crystal clear vision with greater depth of field.
- A single camera for all modes: macro, intraoral, tooth, smile and portrait.

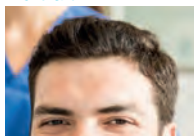
Macro



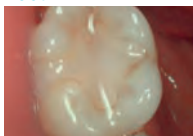
Intra-oral



Portrait



Tooth



Smile



Improved patient follow-up

- More information about your patients: age, illnesses, diet, oral hygiene, etc.
- Lasting trust between you and your patients.

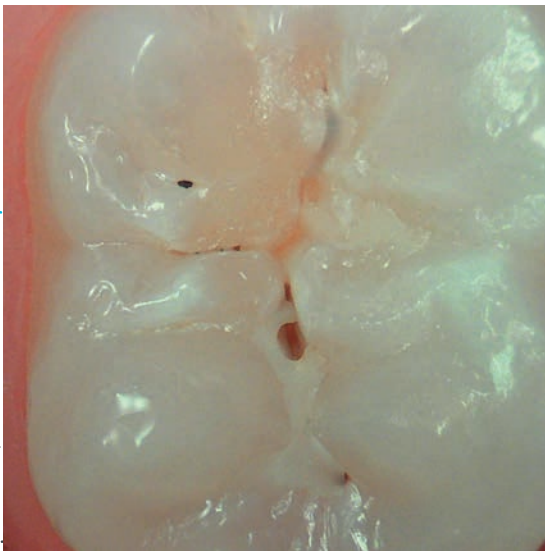


Remarkable clinical versatility



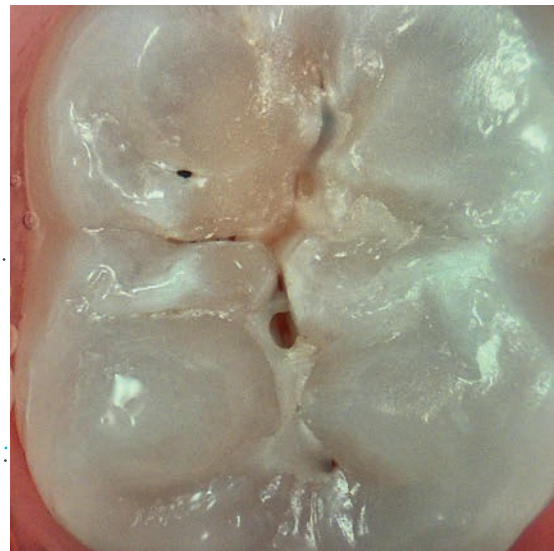
Vision modes for a detailed and more reliable diagnosis

DAYLIGHT MODE



Record of **natural colors** for a better interpretation of tooth shade, pathology identification and patient follow-up.

DAYLIGHT+ MODE



High contrasts emphasizing anatomic fissures and details of the dentin structure/depth.

Camera modes for complete patient follow-up



INTRAORAL MODE

daily dentistry
follow-up

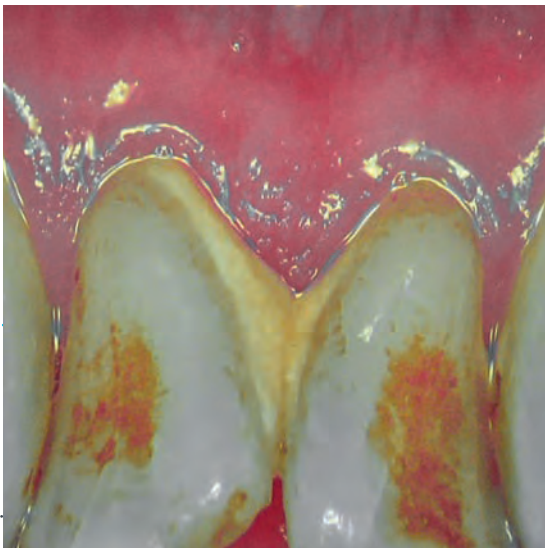
Daylight or Diagnostic aid modes help you visualize anatomical details that are invisible to the naked eye or with a mirror (thanks to its magnification).

These modes allow the dentist to show the difference between «before» and «after» care.



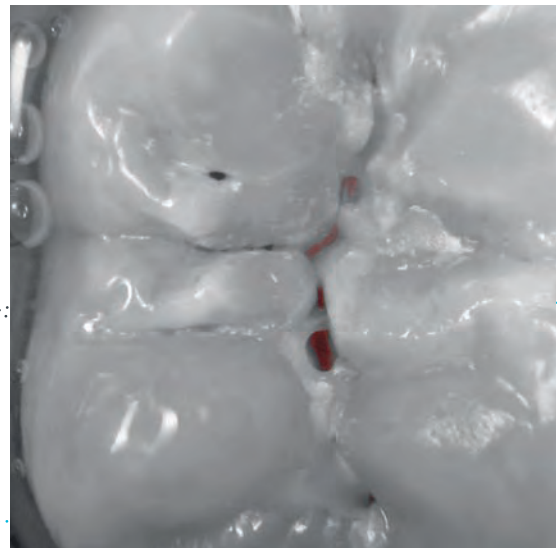
A versatile system to diagnose a variety of cases

PERIO MODE*



Enhancement of **dental plaque**
and **gingival inflammation**
thanks to chromatic amplification.

CARIO MODE*



Caries **detection by**
fluorescence technique by LEDs.



PORTRAIT MODE orthodontics follow-up

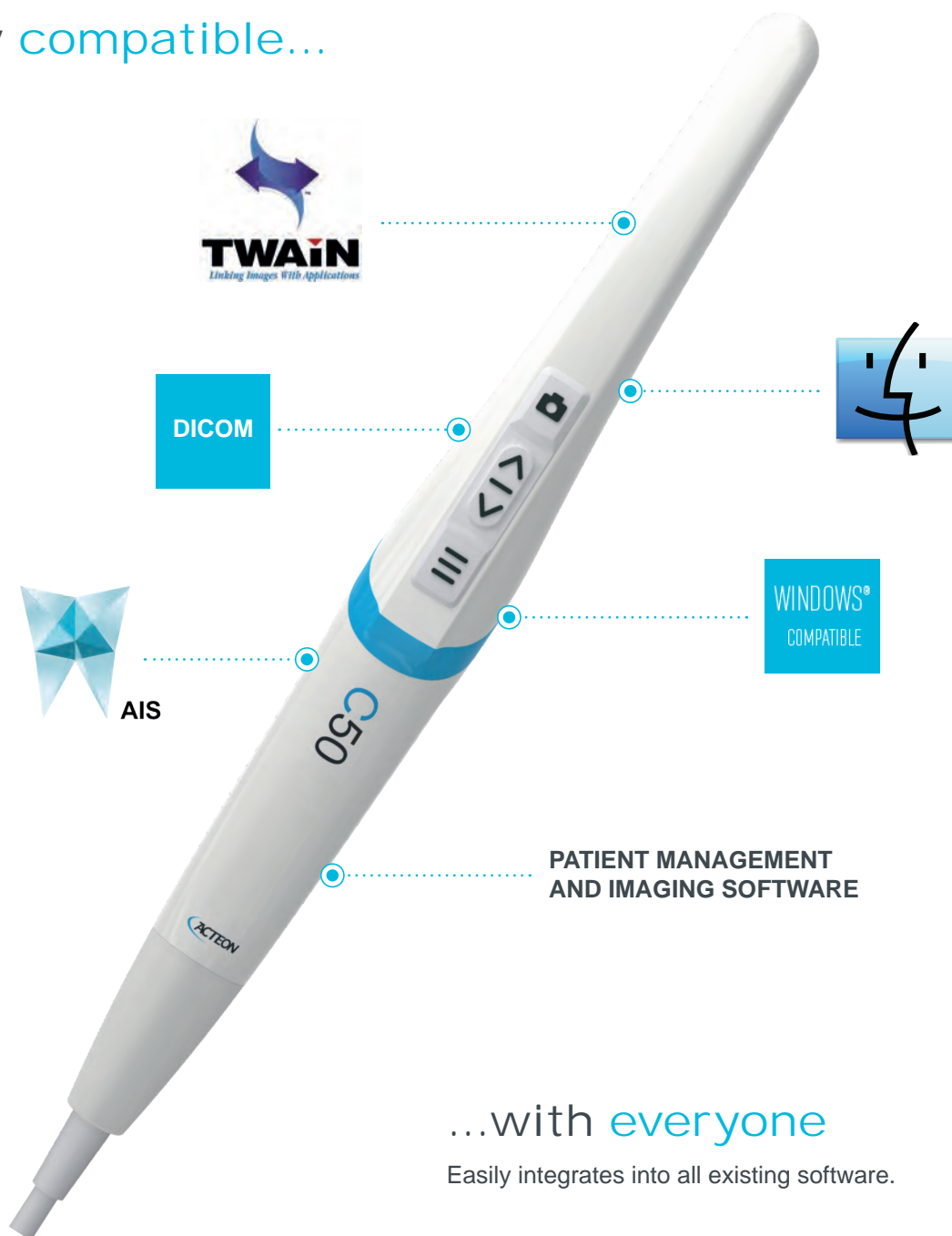
The portrait mode turns off the LED light to capture the patient's facial or lateral side, ensuring the best orthodontics follow-up.



Remarkable
clinical
freedom

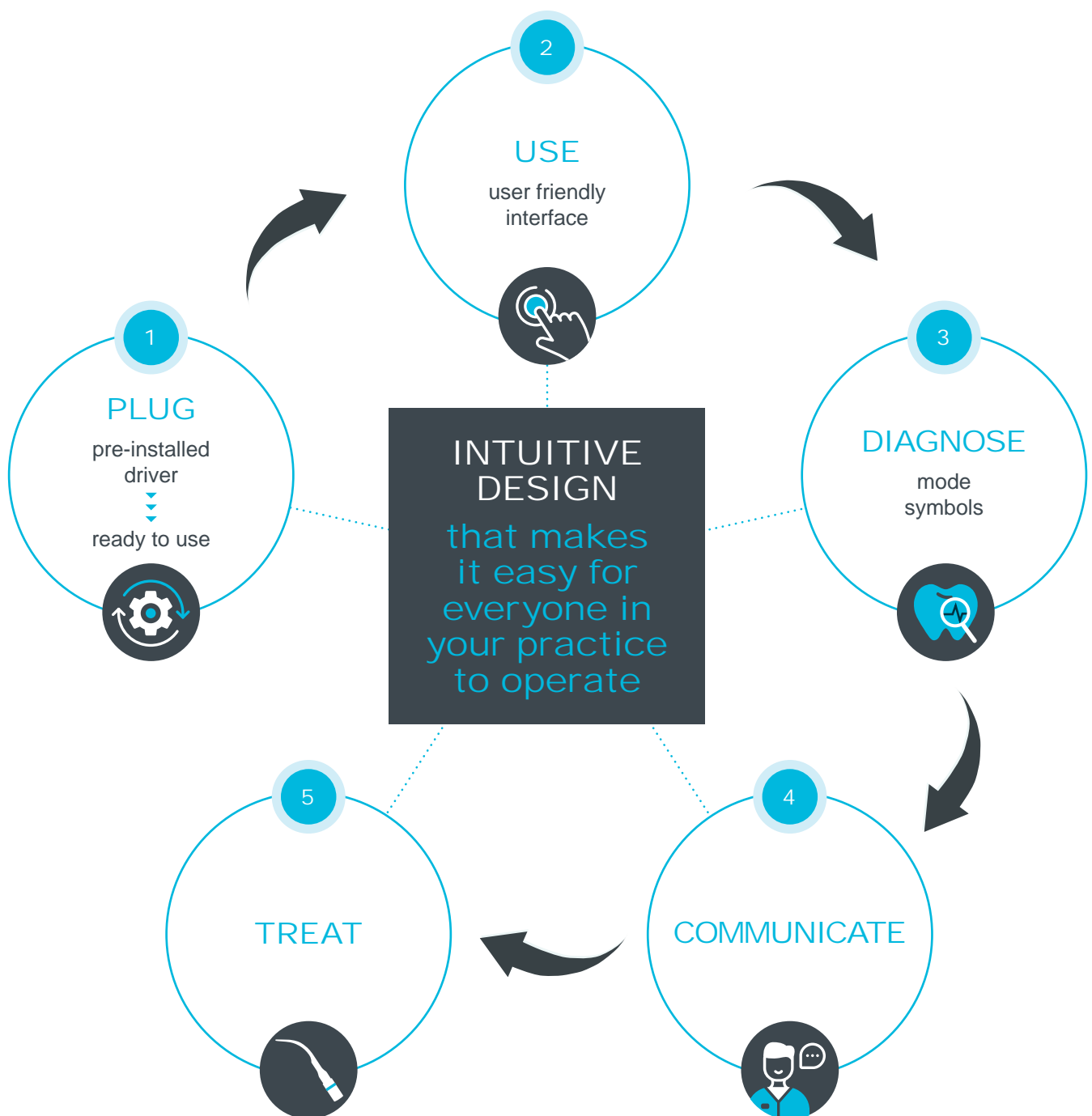
Free yourself
from constraints

Fully compatible...



...with everyone

Easily integrates into all existing software.



Beyond the features

Patients become more engaged as they can quickly see and understand the importance of the suggested treatment.

Increase
treatment
compliance

Highlight pathologies and explain clinical procedures easily. Enhance your explanation and facilitate meaningful dialogue to address patient objections and concerns.

Improve
patient
communication

Provide effective treatment planning by saving the images directly in the patient record. Easily compare images from previous patient visits and monitor progress to foster trust and achieve successful outcomes.

Build
confident
relationships

Focus on what matters most:
your patients



Workflows by ACTEON®



We understand that with the number of patients you see daily, your practice requires you to maximize productivity.

ACTEON® provides **solutions** to support and elevate your **care during each point of the patient's care continuum**: from assessment to diagnosis to treatment planning and execution.

"Acteon Intraoral cameras have a cool "cavity detection" system that highlights dental decay. The technology is AMAZING. Not only does it motivate patients to receive more care, it elevates the quality of care because I don't leave bacteria in the tooth."

*Dr. Robert Grimes, DDS
Lubbock, TX*



"I have a high anxiety when it comes to dental work. Dr Grimes said he would never hurt me, and he never has. I trust Dr Grimes because he shows me what is wrong and explains my treatment plan."

*Larissa
Patient Dr Grimes*



With you, every step of the way

caries detection workflow



About ACTEON®'s caries detection workflow

With ACTEON®'s caries detection product portfolio, you can implement an efficient caries detection and treatment workflow. It also helps you communicate more successfully with your patients and increase confidence.

prophylaxis workflow



About ACTEON®'s prophylaxis workflow

This combination of solutions helps dentists easily and quickly diagnose potential dental disease such as periodontal disease and gingivitis. It also helps to perform safe and minimally invasive procedures, providing best care and comfort for patients.

Camera Specifications

Sensor	CMOS
Resolution	1920 x 1080px
Sensitivity	2 lux
Frame per second (FPS)	25 – 30
Aspect ratio	16/9
Lighting	6 white LEDs and 2 blue LEDs
Focus adjustment	Automatic focus or Single focus
Five Depth Of Field Modes	Portrait, Smile, Tooth, Intra-Oral, Macro
Image capture	Capture button or footswitch (optional)
Angle of view	75°
Cable length	3m
USB output	3.0
Consumption	4.5W max
Handpiece dimensions	L: 200; W: 30; H: 24mm
Handpiece weight	100g
International Protection Marking (IP)	Dust & waterproofness protection IP53

Computer Configuration Requirements

Computer requirements	Specs
CPU	Intel Core i5 4 core 2GHz Gen 8 or greater
RAM	8GB
USB version	3.0 or greater
USB chipset	Intel or Renesas
Operating system	from Windows 10 PRO 64 bits or macOS Catalina

Class I medical device for dental care. CE. For professional dental use only.
 This medical device is not refunded by health insurance organizations. Read carefully the instructions before use.
 Manufacturer: Sopro® ACTEON® Group (France)
 Creation date: November 2022



SOPRO ■ A company of ACTEON Group
 ZAC Athélia IV ■ Avenue des Genévriers ■ 13705 LA CLOTAT cedex ■ FRANCE
 Tel. +33 (0) 442 980 101 ■ Fax. +33 (0) 442 717 690
 E.mail: sopro@acteongroup.com ■ www.acteongroup.com

