

W&H Sterilizers

Made-to-measure precision and perfection



Totally type B



W6H

UNIVERSAL 121
PRON 121
UNIVERSAL 121
21/03/10 00:37PM
17/001100

lisa

A technical leap has been achieved: Lisa has become fully automatic. At the forefront of modern dentistry, Lisa is a technological masterpiece, integrating on-board computer, traceability system and “made-to-measure” sterilization cycles.

“Made-to-measure” automatic cycles

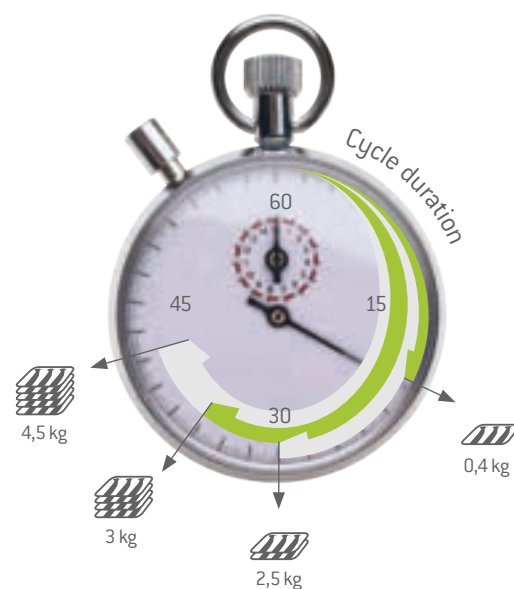
With its new automatic type-B cycles, Lisa brings advantages all round: adaptation and reduction of the cycle time according to the number and type of instruments to be sterilized and shortened drying through the patented ECO-Dry system.

A must for medium loads

By reducing the cycle duration according to the load mass, Lisa becomes a premium performing sterilizer for medium loads as there is no need to wait until a full load is available. The result is time savings of 15 to 25 minutes for these smaller loads. Your valuable instruments are less exposed to heat, therefore increasing their lifespan.

Air detection: automatic cycle validation

So as to ensure the successful outcome of the made-to-measure cycles, Lisa is equipped with an air detection system that confirms the full exposure of instruments to saturated steam, even with hollow loads. The result is automatically validated cycle performance and extra safety against cross-infection.



W&H invents the cycle that adapts to the load





Digit password

1

2

3

4

5

6

7

8

9

←

0

C

With its new traceability system, W&H goes even further in terms of safety whilst keeping it simple. Programming, identifying, validating, saving and printing is all done by simply touching Lisa's interactive screen.

Full legal protection

As recommended by the applicable hygiene guidelines, W&H's traceability concept makes the link from the instruments used for treatment and the corresponding sterilization processes to the patient file so that your hygiene protocol is complete.

No risk of error

Traceability begins by demonstrating that the sterilization cycle is compatible with all load types (hollow loads, implantology cassettes etc.). This is always the case with Lisa whose cycles are all of hospital grade type-B. This characteristic means peace of mind for the medical team.


Integrated automatic traceability

Lisa has an on-board computer that automatically manages the whole traceability procedure. Therefore, there is no need for a computer or dedicated software. This also avoids moving between the sterilizer and the surgery's computer and handling both.

Releasing the load for use

At the end of the cycle and after the door has opened, the user can release the load for use by identifying themselves and entering their unique password directly on the touch-screen. Releasing the load will only be authorized if the cycle has completed successfully.



Lisa 522 09 - 0282 00.15.03.00.00
Released by: Fanny Lemoine
Cycle: UNIVERSAL 134
Number: 00175
Date: 01/02/2011 12:59:06
Expiry date:
28/02/2011

C31128A00175



LisaSafe traceability pack - makes the link to the patient file

The LisaSafe barcode label printer is connected directly to the Lisa sterilizer. After the treatment procedure, the barcodes are scanned into the patient's file.





The essentials of sterilization

Welcome to Lina, the new addition to the W&H range of sterilizers and a reliable partner which can be adapted to your practice requirements.

100% type-B cycles (obviously)

Staying true to the W&H concept, the Lina sterilizer offers exclusively hospital grade type-B cycles as well as a short ECO-B cycle for your small loads. With its user-friendly key-pad, you can navigate all the sterilization options easily.

Simple and expandable

Lina offers a great price performance ratio and was designed to evolve according to the needs of your practice. When required, you can add the optional Multiport which allows the saving of cycles on USB stick and the printing of barcode labels via the LisaSafe printer. Connection to the W&H water treatment and filling system Multidem is also possible.



Multiport option



Highly efficient cycles!

Lisa «made-to-measure» sterilization cycles

Sterilization cycle		B-Universal 134		B-Prion 134		B-Universal 121	
Temperature		135.5 °C		135.5 °C		122.5 °C	
Pressure		2.16 bar		2.16 bar		1.16 bar	
Plateau duration		4'		19'		15'	
Total cycle duration including complete drying		Made to measure cycles + ECOdrying	Typical Load	Made to measure cycles + ECOdrying	Typical Load	Empty	Full load
	Lisa 517	Automatic from 20' to 46'	33'	Automatic from 34' to 60'	47'	41'	56'
	Lisa 522	Automatic from 23' to 52'	33'	Automatic from 37' to 66'	47'	42'	62'
Max solid loads: Full/Typical/Max porous load		Lisa 517: 4.5kg/2kg /1.5kg • Lisa 522: 6kg/2kg/ 2kg					
Test cycles		Helix/Bowie & Dick/Vacuum test					

Lina sterilization cycles

Sterilization cycle		B-Universal 134			B-Prion 134			B-Universal 121	
Temperature		135.5 °C			135.5 °C			122.5 °C	
Pressure		2.16 bar			2.16 bar			1.16 bar	
Plateau duration		3.5'			18'			15'	
Total cycle duration including drying (warm start)		ECO-B	Full Load	Typical Load	ECO-B	Full Load	Typical Load	Empty	Full Load
	Lina MB17	25'-30'	59'	52'	40'-45'	74'	66'	48'	67'
	Lina MB22	28'-35'	72'	59'	43'-50'	87'	73'	63'	81'
Max solid: ECO/full/typical loads/Max porous load		Lina MB17: 0.5kg/4kg/2kg/1.5kg • Lina MB22: 0.5kg/5kg/2kg/1.8kg							
Test cycles		Helix/Bowie & Dick/Vacuum test							

The complete range of accessories for W&H sterilizers

Traceability



LisaSafe traceability pack

The pack offers a plug and play solution for making the automatic link with the patient, avoiding unnecessary handling and risk of error.

The labels from pouches containing instruments used during treatment are simply scanned into the patient's file. The barcode reader is compatible with all computers and dental software.

Note: suitable for Lina via the optional Multiport

LisaWare

With W&H's software, cycle records are automatically saved on your computer and you can monitor the status of up to 4 Lisas directly from the computer screen.



LisaWare

Multiport

Adaptor giving the option of saving Lina sterilization cycles on USB stick and connecting the LisaSafe barcode label printer.



Multiport

Print : Print for Lisa

Lisa's dot matrix printer can be used for printing sterilization cycles on standard paper rolls.



Print

Sprint : Sprint for Lina

For the printing of cycle records on 10-year guaranteed thermal paper.



Sprint

Pouch sealing device

Express wrapping with Seal²

In just 2 seconds, the Seal² pouch sealing device produces 12 mm seals for rolls up to 310 mm wide. The sealing temperature is electronically regulated to guarantee a perfect hermetic seal.



Seal²

Ease of use, big capacity and saves room

The transparent sealing station and integrated work surface improve handling.

The patented double roll holder can accommodate a large selection of roll-widths, is detachable from the sealing station and can be wall-mounted.



Water demineralizer systems

High volume water supply with Osmo

The Osmo system supplies a very large quantity of pure water and ensures the automatic filling of one or more sterilizers simultaneously.



Osmo

Multidem: a precious source of water

Multidem supplies demineralized water to W&H or other brand sterilizers. What's more, the changing of the resin cartridges is done in a matter of seconds and without the need of a special tool.



Multidem

Technical Data

**W&H sterilizers were designed,
certified and validated with the most stringent
Directives and Standards:**

93/42/EEC	Medical Device Directive
97/23/EEC	Pressure equipment Directive
ISO 17665 (EN 554)	Validation and routine control
EN 13060	Small steam sterilizer
EN 61326	Electromagnetic compatibility
EN 61010-1	Safety requirements
EN 61010-2-040	Specific requirements for steam sterilizer

Technical characteristics Lisa

Power supply	200/240 VAC 50-60 Hz/10A
Power consumption	2000-2400W
Dimensions overall (mm)	W:450-H:435-D:599
Weight	Lisa 517: 43,9kg Lisa 522: 46,2kg
Mean sound levels (L_{WA})	62dB
Main/Used water tanks	4/3.5 litre
Working range	7 to 11 cycles
Usable space in chamber (mm)	17l- W:195 x H:205 x D:300 22l- W:195 x H:205 x D:385
Connection types	parallel, serial, Intranet LAN (option), integrated automatic water inlet filter



CE 0051 CE 0497

Technical characteristics Lina

Power supply	200/240 VAC 50-60 Hz/8.75A
Max. Power consumption	1700W
Dimensions overall (mm)	W:450-H:435-D:599
Weight	Lina MB17: 38kg Lina MB22: 40.5kg
Mean sound levels (L_{WA})	63 dB
Mains/Used water tanks	4/3.5 litre
Working range	4 to 7 cycles
Usable space in chamber (mm)	17l- W:195 x H:195 x D:297 22l- W:195 x H:195 x D:390
Connection types :	serial

Manufacturer

W&H Sterilization Srl.
Via Bolgara, 2
24060 Brusaporto (BG), Italy
t +39-035-66 63 000
f +39-035-50 96 988
office.sterilization@wh.com
wh.com



ISO 9001 : 2000
Certificate N° 9124.WEAB1



ISO 13485 : 2003
Certificate N° 9124.WEAB2

