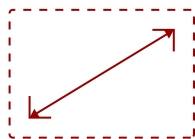


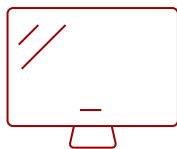
LDS135-151 - 135" DISPLAY, 1920 X 1080 RESOLUTION, 600-NIT BRIGHTNESS, 24/7

Key Features

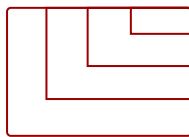
- Pre-assembled kit ready for instant use
- Built-in stand with motorized height adjustment
- Easy to move around with 360° silent wheels
- Simple delivery with movable flight case
- Impressive large display for rental at any event/exhibition



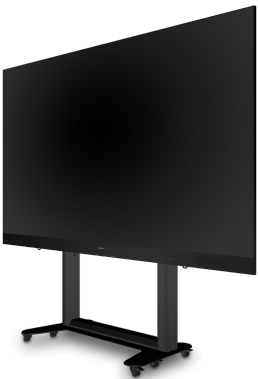
135
DISPLAY



PANEL



1920x1080
RESOLUTION



Product Description

The ViewSonic® LDS135-151 is a 135" All-in-One Direct View LED Display Solution Kit boasting easy delivery, installation, and maintenance. The pre-assembled design and built-in motorized height adjustment stand enable effortless setup within just a few minutes. It can be freely moved around with 360° silent wheels and stabilized with push-button locking. Delivery is easy with the included moveable flight case - a perfect rental-ready solution to impress your viewers from one event or exhibition to another. Engage your audience on a magnificent screen everywhere from high-end board rooms and receptions to galleries, auditoriums, and other large venues.

Specifications

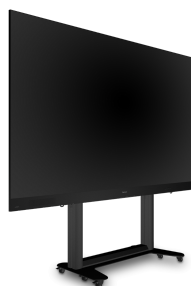
More Information

Display Type

Direct View LED

Screen Size	135
Viewable Area (in.)	135
Light Source	Fine Pixel Pitch LED
LED Pitch Size (mm)	1.56
LED Grayscale	14 bits
Resolution	1920 x 1080
Refresh Rate (Hz)	4,440
Aspect Ratio	16:9
Static Contrast Ratio	6,000:1
Backlight Life (Hours)	100,000
Brightness	600-nit
Viewing Angles	160º horizontal, 160º vertical
Operation Rating	24/7
OS	Android 9.0
Media Player Type	Yes
GPU	Mult-core MaliG51 MP2
CPU	MTK9669
Memory	4GB DDR4
Storage	64GB (56GB available)
Internal Speakers	20W (x2)
PC Resolution (max)	1920x1080
Mac® Resolution (max)	1920x1080
HDMI 1.4 In	2
HDMI 2.0 In	3
HDMI 2.1 In	1
HDMI 2.0 Out	2
3.5mm Audio Out	1
USB 2.0	3
RS232	1
Ethernet LAN (RJ45)	1
IR in	1
WIFI Module Slot	1
Intel® OPS Slot In (80-pin)	1
Voltage	100-120V+/- 10%, 50/60Hz, 30A
Consumption (max)	1,200W
Consumption (typical)	2,300W

Stand-by	<0.5W
On Screen Display	Yes
Remote Control	Yes
Temperature	32-104° F (0 - 40° C)
Humidity (non-condensing)	20-80%
Net (lbs)	194.0
Gross (lbs)	330.0
Net (kg)	225.0
Gross (kg)	330.0
Packaging (in.)	74.8 x 80.0 x 31.5
Physical (in.)	70.9 x 76.7 x 30.3 (min.), 118.5 x 102.3 x 30.3 (max.)
Packaging (mm)	1900.0 x 2032.0 x 800.0
Physical (mm)	1800.0 x 1948.0 x 770.0 (min.), 3010.0 x 2598.0 x 770.0 (max.)
Warranty	5-year limited warranty on parts and labor, on-site service
Recycle/Disposal	Please dispose of in accordance with local, state or federal laws.
PACKAGE CONTENTS	Power Cord, Remote Control, QSG, Maintenance Tool (LD-MK-001) x 1, LAN Cable (Cat 5A) x 1, IR Extender Cable x 1, Spart Modules (LED PCB x 7)
Regulations	cTUVus, FCC, RoHS



Contact Sales

ViewSonic.com

888.881.8781 📞

email:

salesinfo@viewsonic.com

