

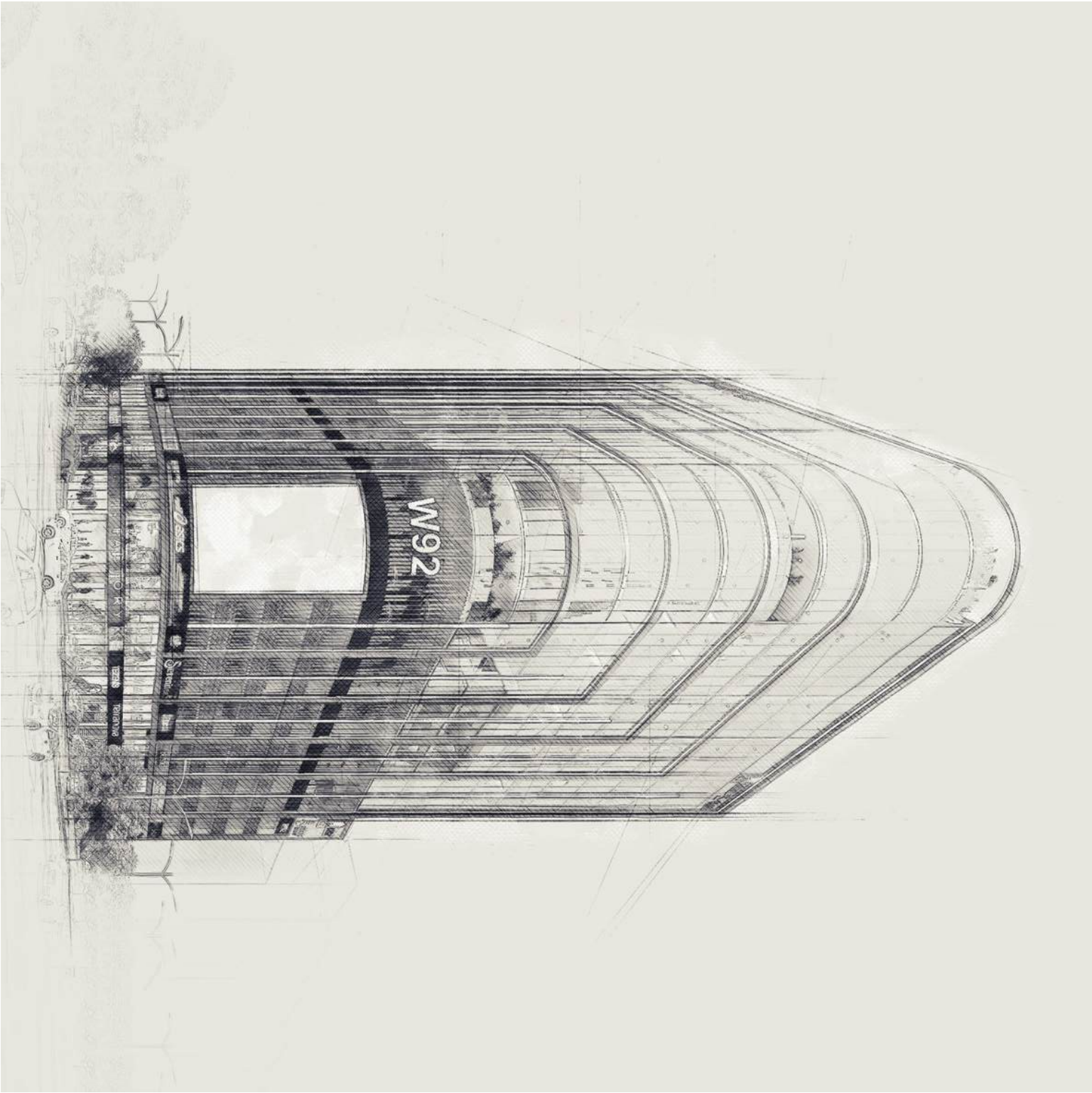
W92
BORIVALI

YOUR NEXT CHAPTER AWAITS

A centrally located address, a state-of-the-art modern structure and a quality facade that meets international standards. These are the luxuries that await your business in the next chapter.

Presenting W92 – a magnificent commercial building that aspires to be the pride of Botvalls commercial center and a cornerstone for your business.

Welcome to your next chapter.



EMBRACE THE STATE-OF-THE-ART

In modern times come modern needs, especially for one of the fastest growing economies of the world. So here's presenting a bold, innovative and 21 st century establishment that goes beyond the conventional construction.

- ◆ Exclusive commercial spaces from 400 sq.ft. onwards
- ◆ Office premises with provision of washroom and pantry inside
- ◆ Exquisite entrance lobby
- ◆ Branded high-speed lifts
- ◆ Separate service elevator
- ◆ Ample car parking with 6 meter wide ramp that leads straight out to the main road
- ◆ Rain water harvesting system
- ◆ Quality facade that meet international standards



A GLIMPSE OF TOMORROW

When it comes to making a statement, it doesn't get better than the LED outdoor display at W92. It's loaded with excellent features with its high brightness and enhanced durability making it one of the first of its kind in Mumbai.



VIDEO WALL





RETAIL SPACES (STREET VIEW)





DIRECT PARKING ENTRANCE FROM MAIN ROAD

A STEP BEYOND CONVENIENCE

W92 is all set to become one of the most convenient commercial properties in all of Borivali. From being centrally located to advanced security systems to a parking space that opens up right on the main road, W92 has you covered.



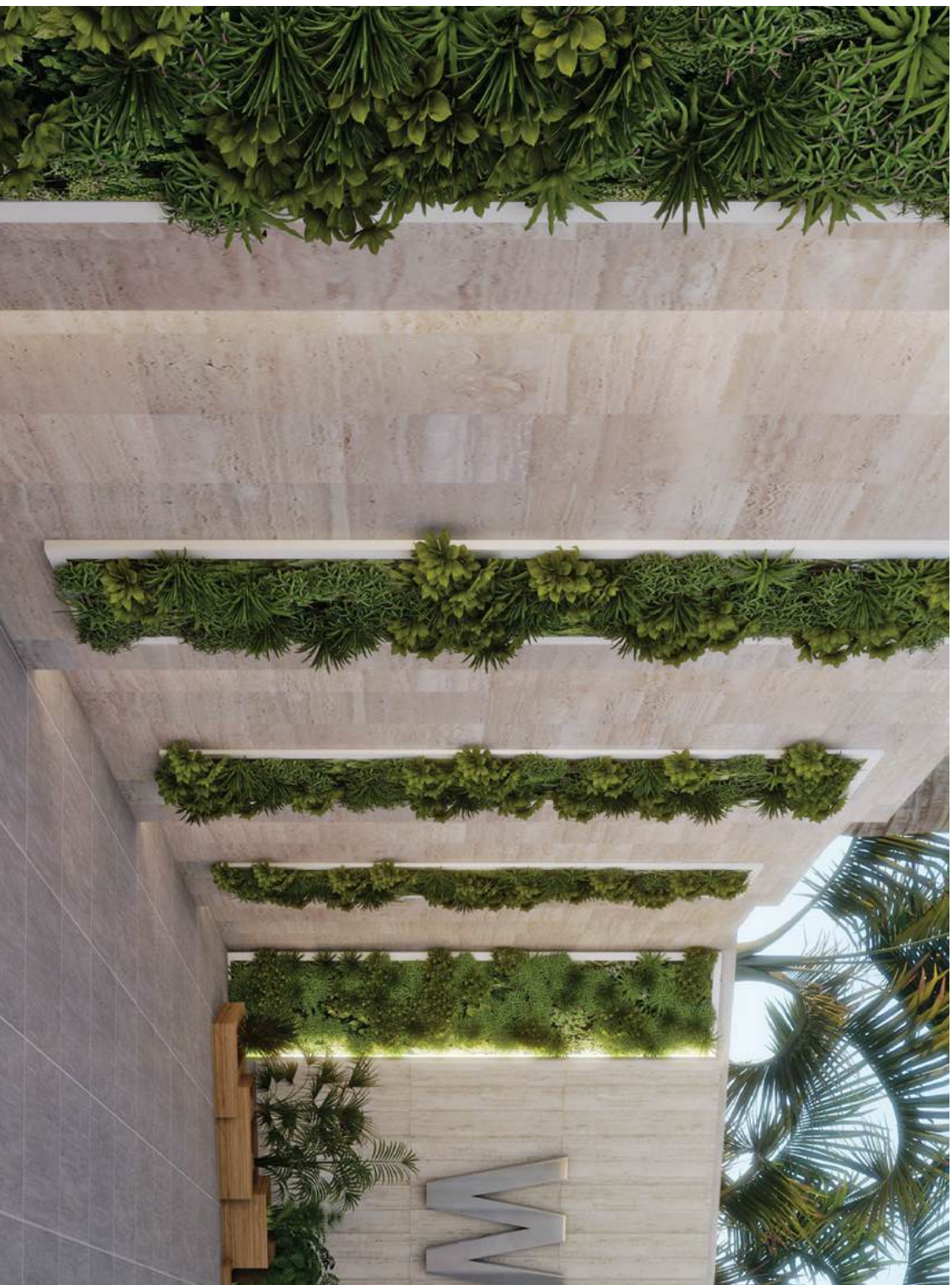
PARKING ENTRANCE LOBBY



PODIUM PARKING

A SPACE THAT INSPIRES

Designed around International standards, W92 aspires to be a symbol of advancement. Bold, innovative and thoroughly modern, this edifice will cater to everything you or your business will ever need. Be it impressing clients or simply you, W92 will never fall short of expectations.



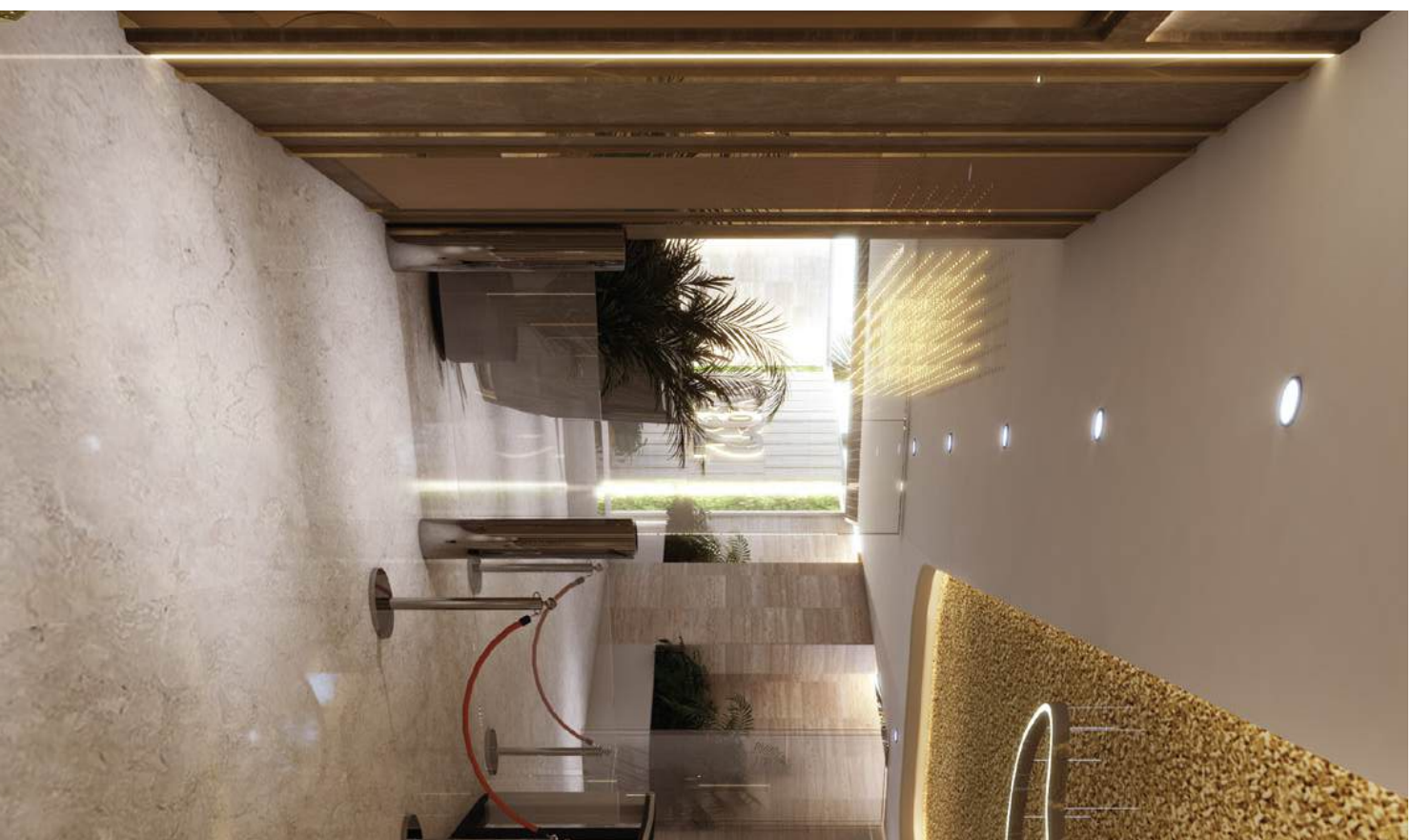


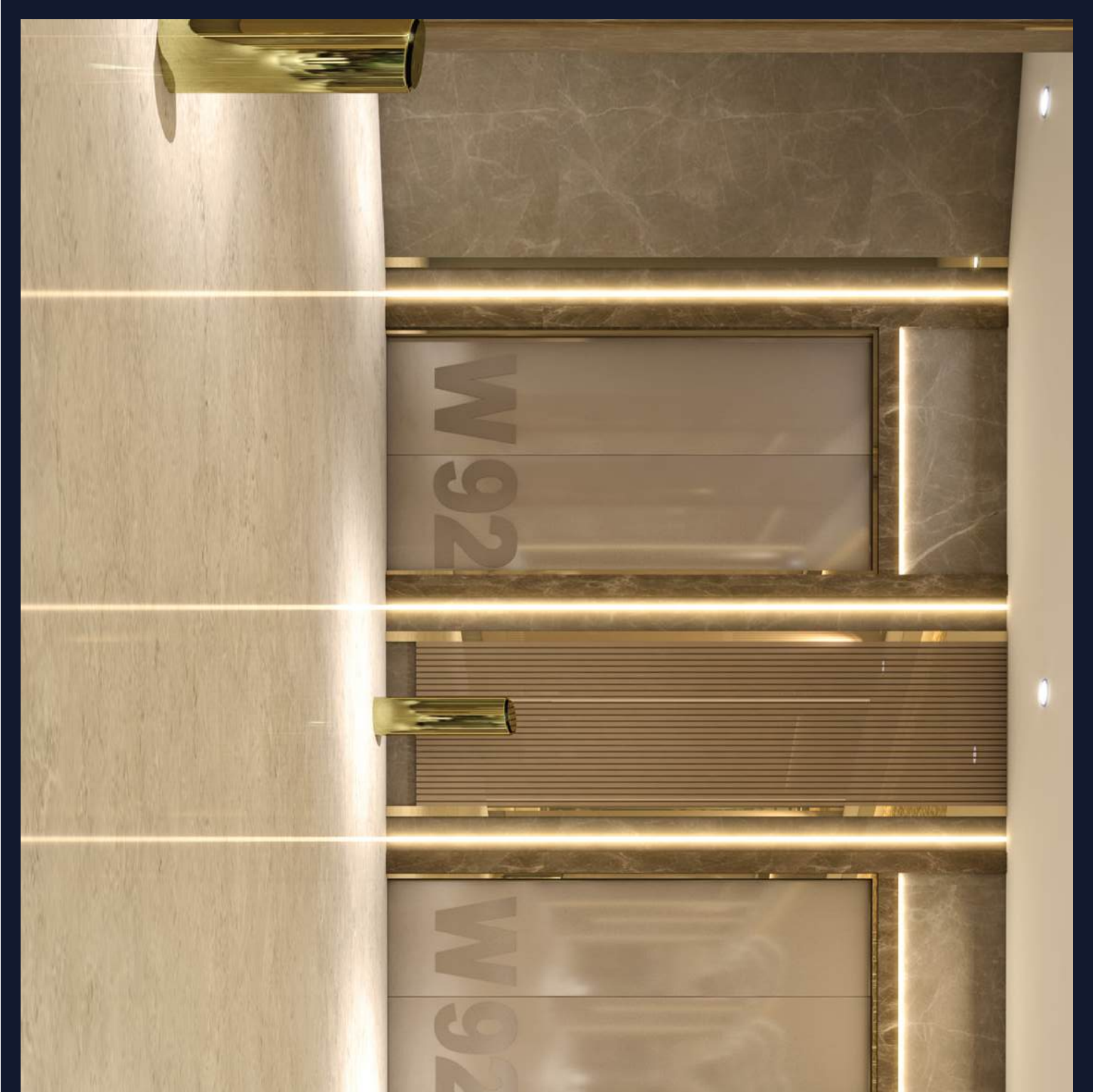
ENTRANCE ALLEY

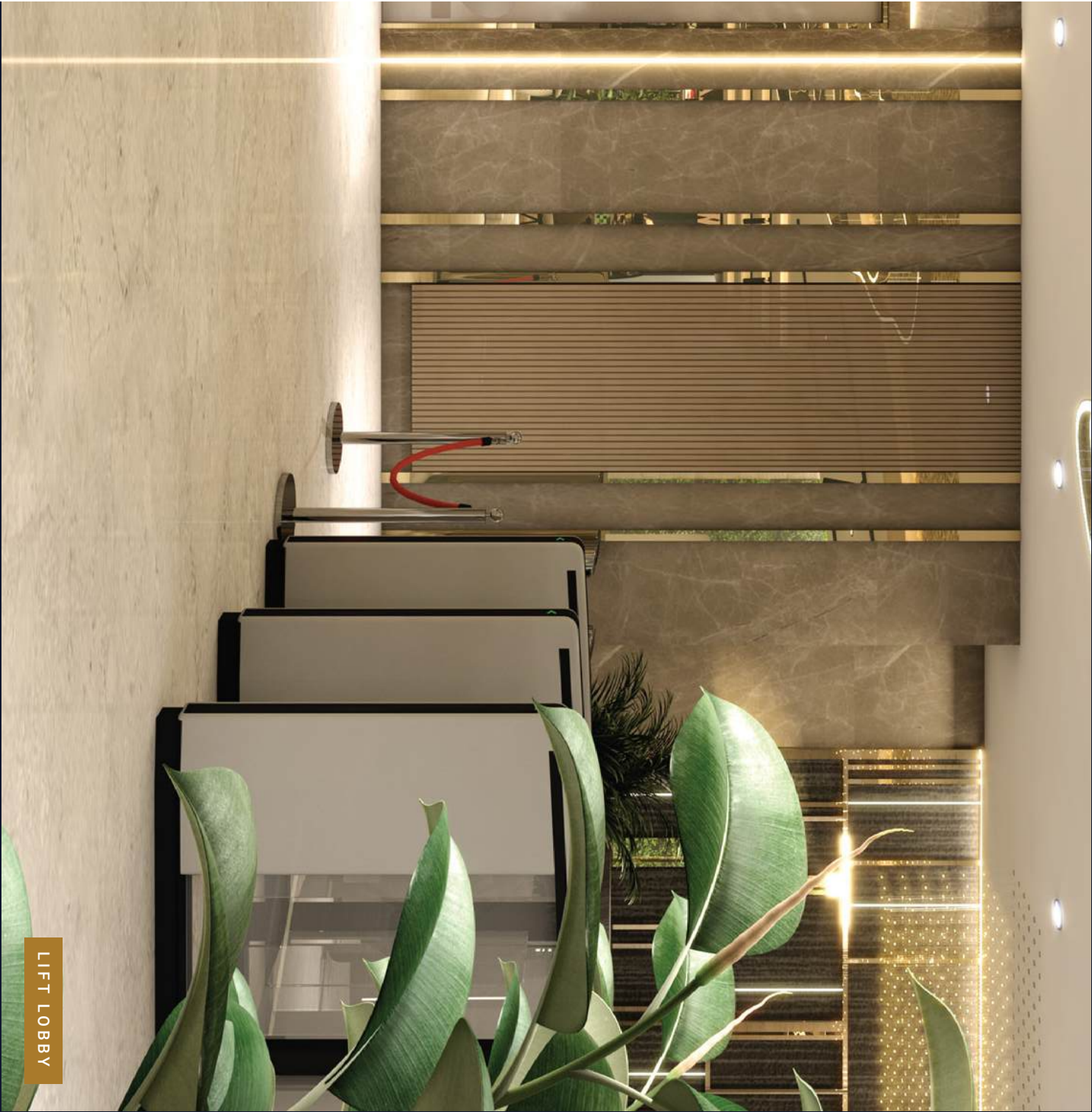
YOUR NEXT STEP IS SECURED.

When it comes to security, we've mastered the art. Equipped with all the latest technology and advanced security systems, W92 provides you with all the stringent security measures expected of an international commercial property.

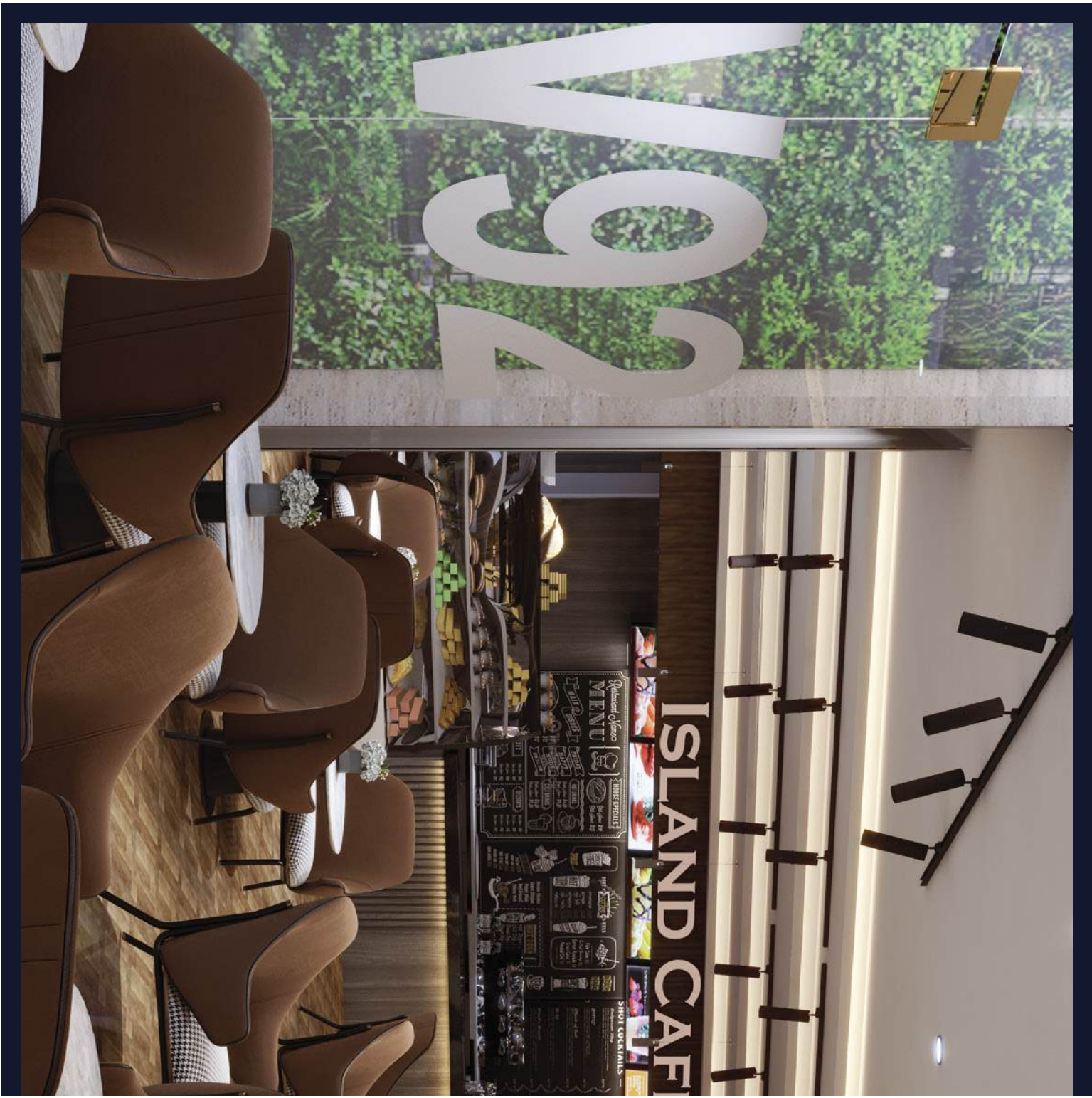
- ◆ Guest reception
- ◆ Advanced security surveillance systems with 24/7 CCTV
- ◆ Advanced firefighting systems

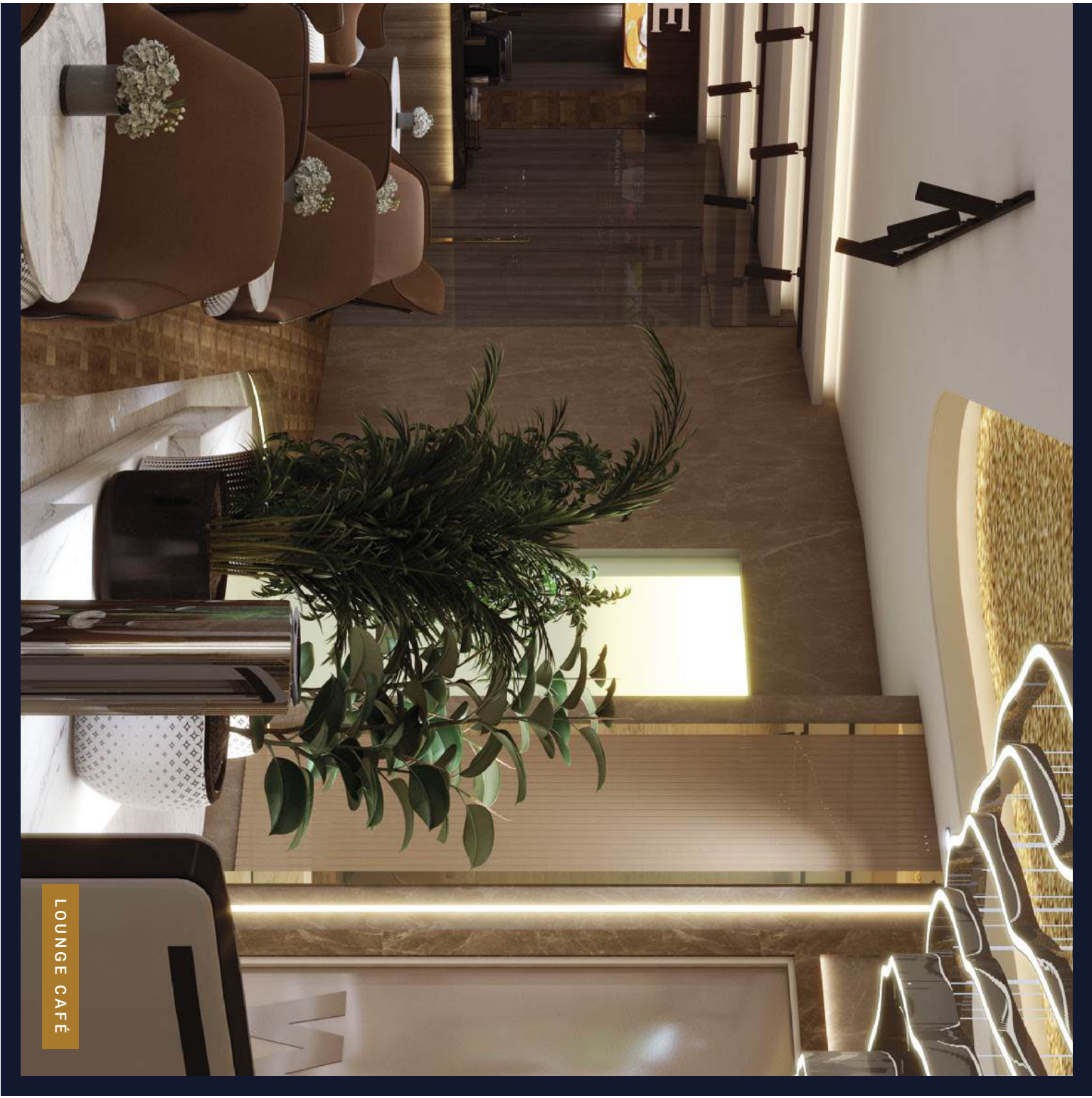




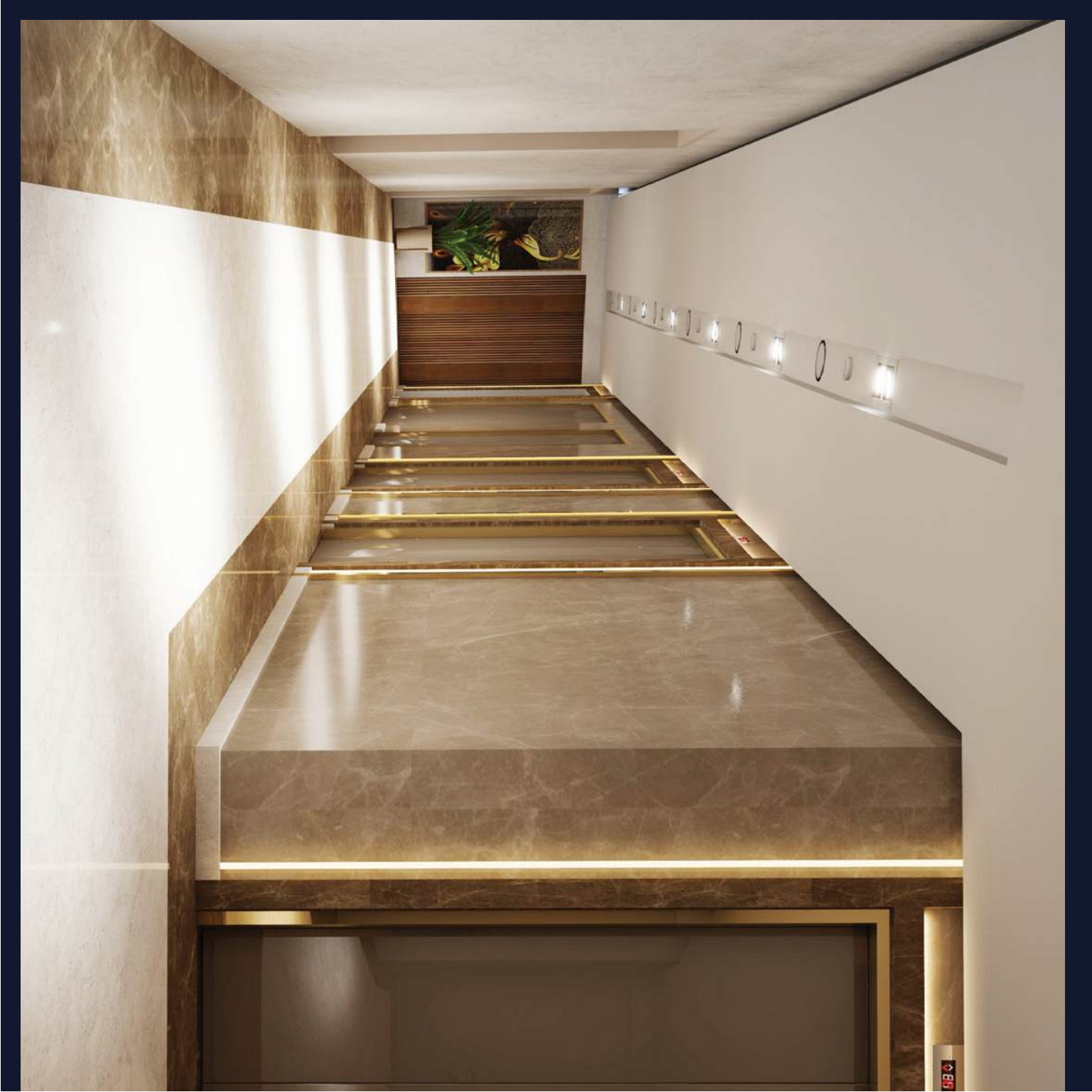


LIFT LOBBY



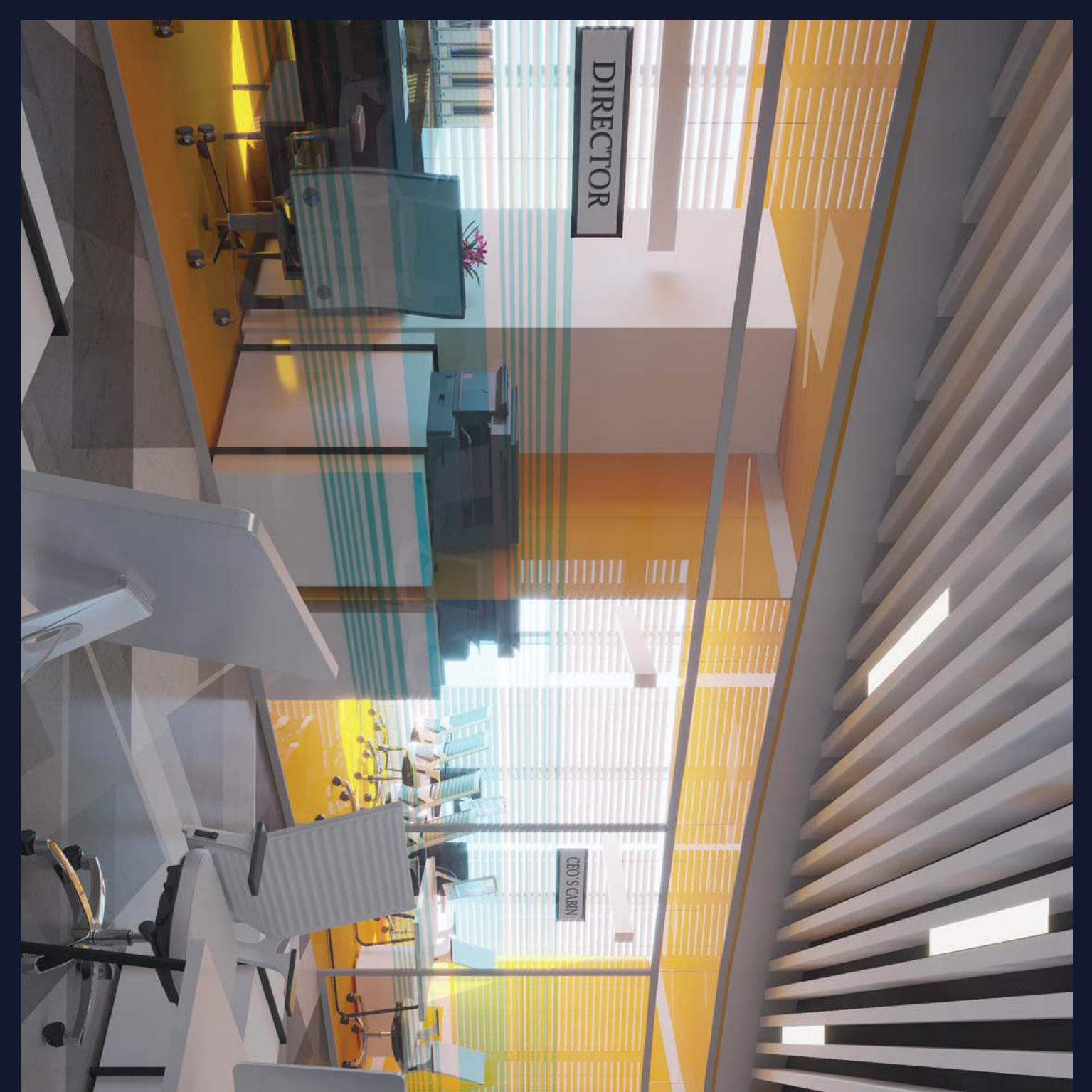


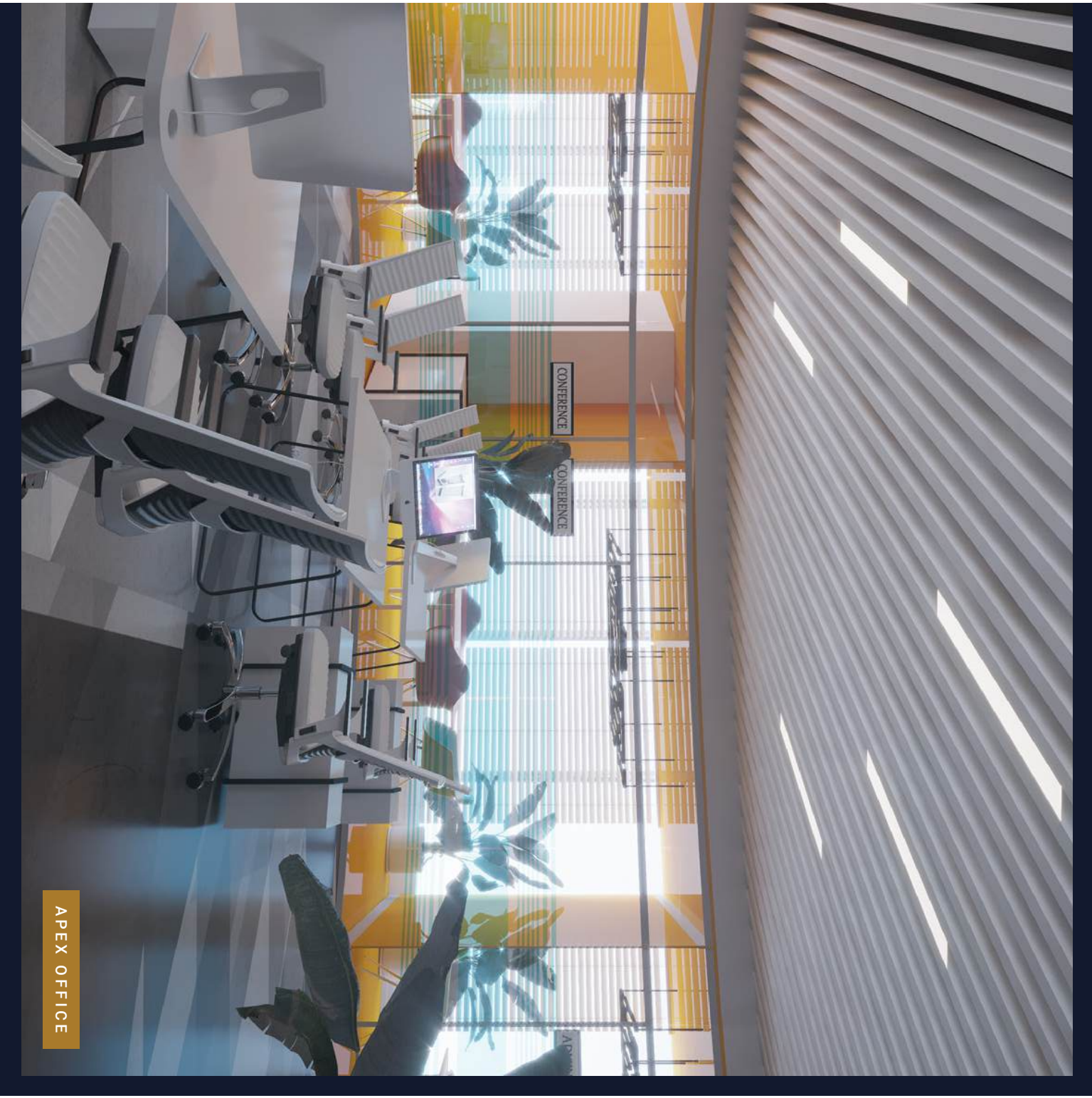
LOUNGE CAFÉ



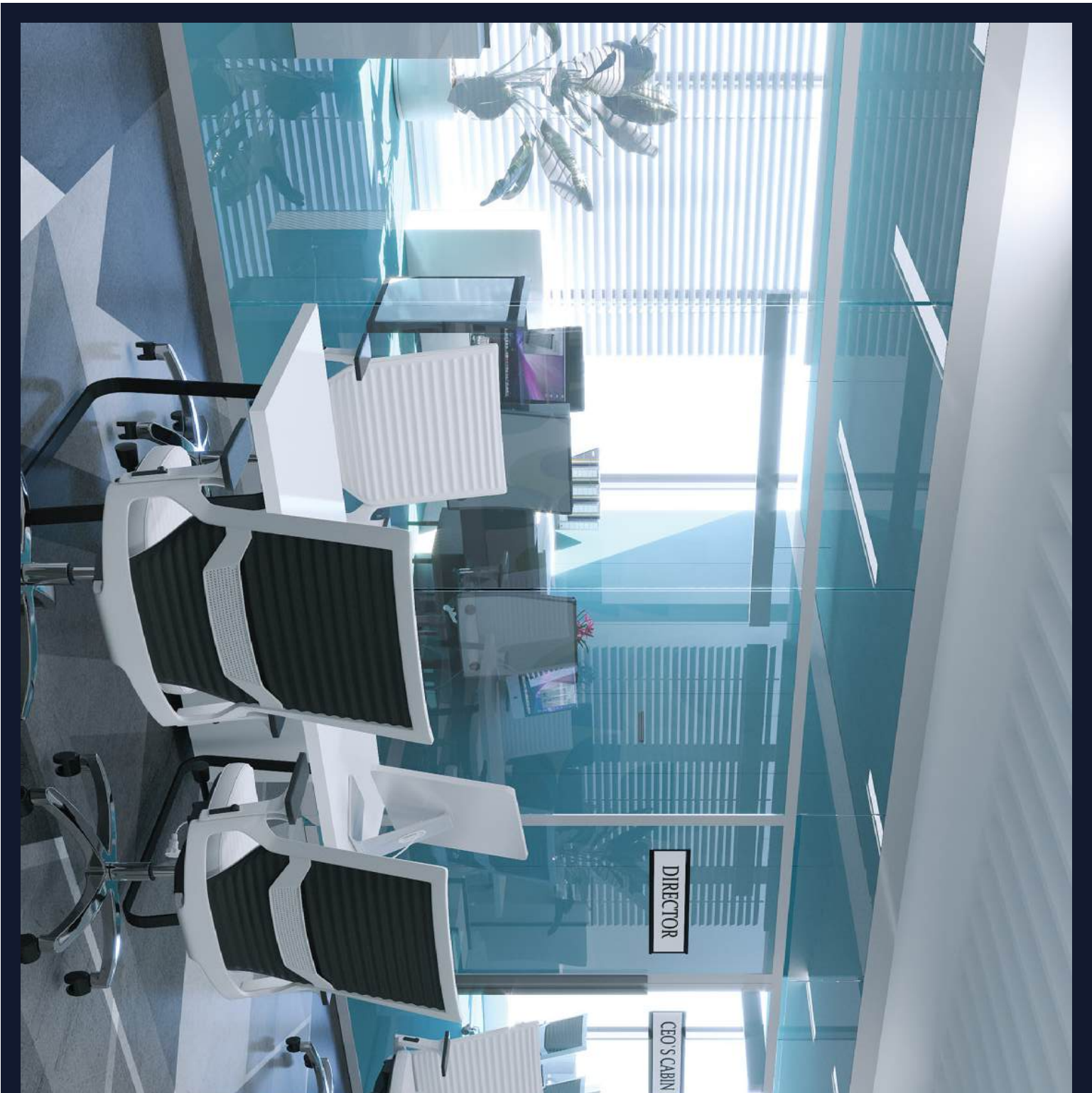


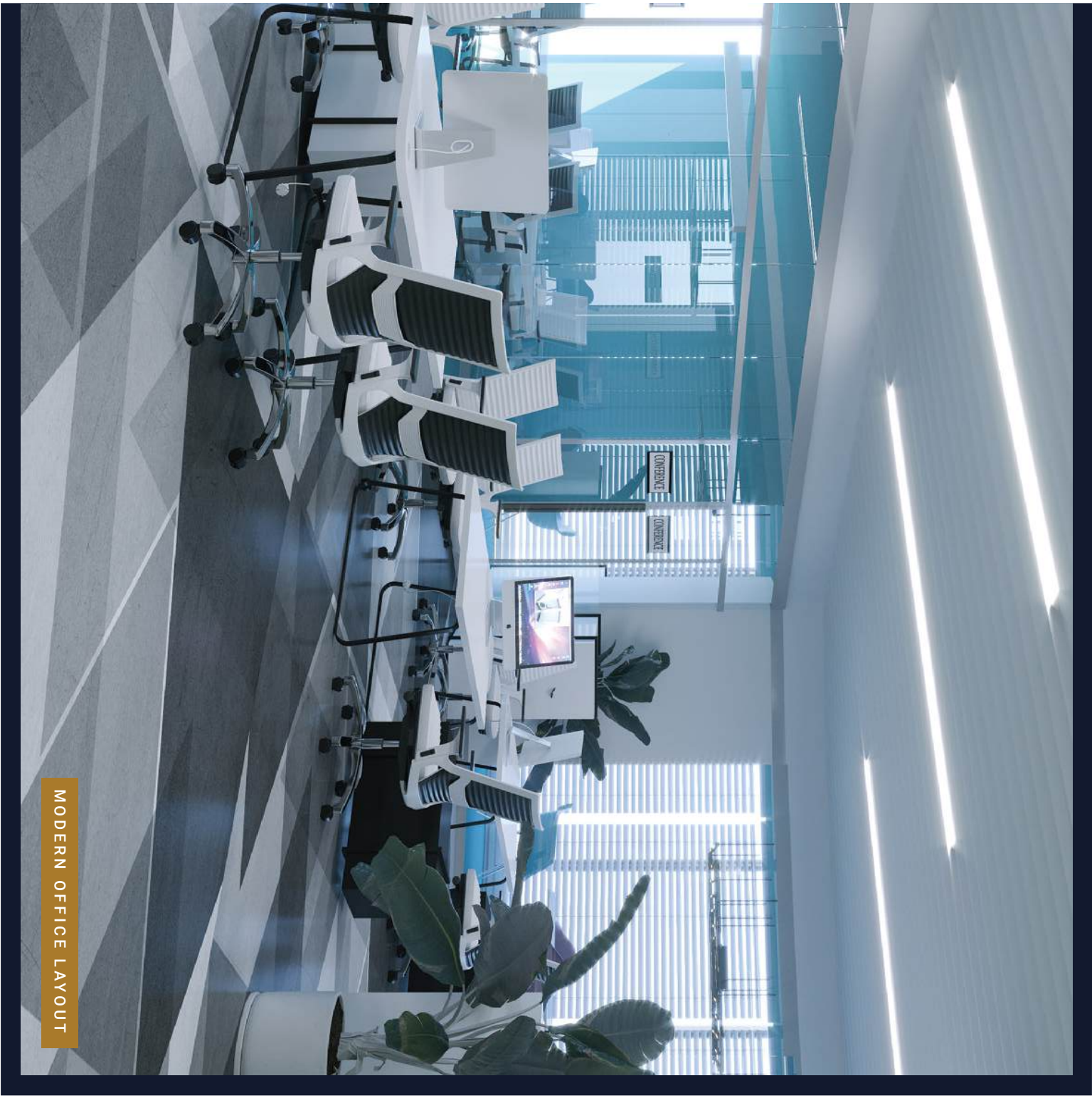
APEX OFFICE CORRIDORS





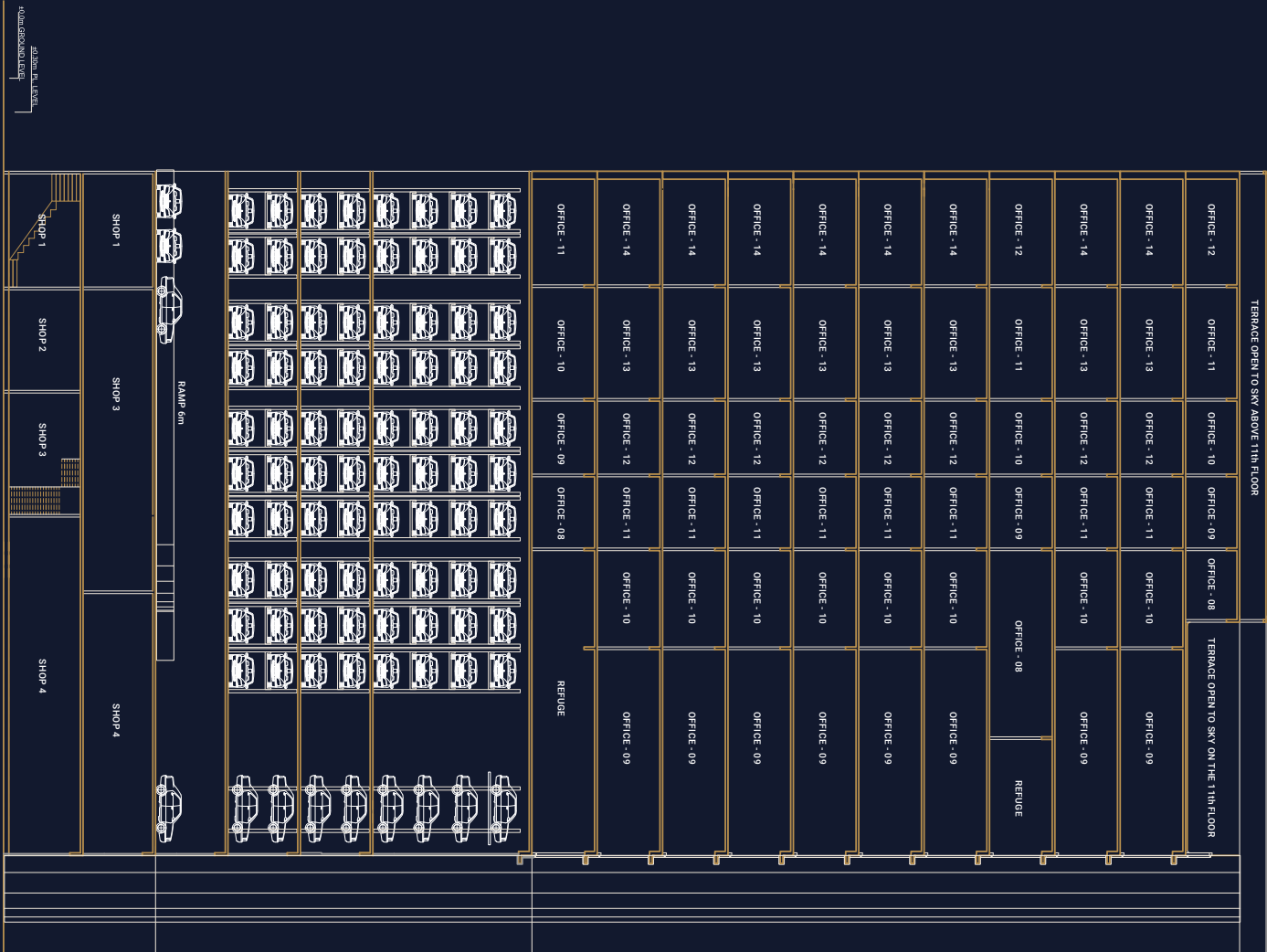
APEX OFFICE

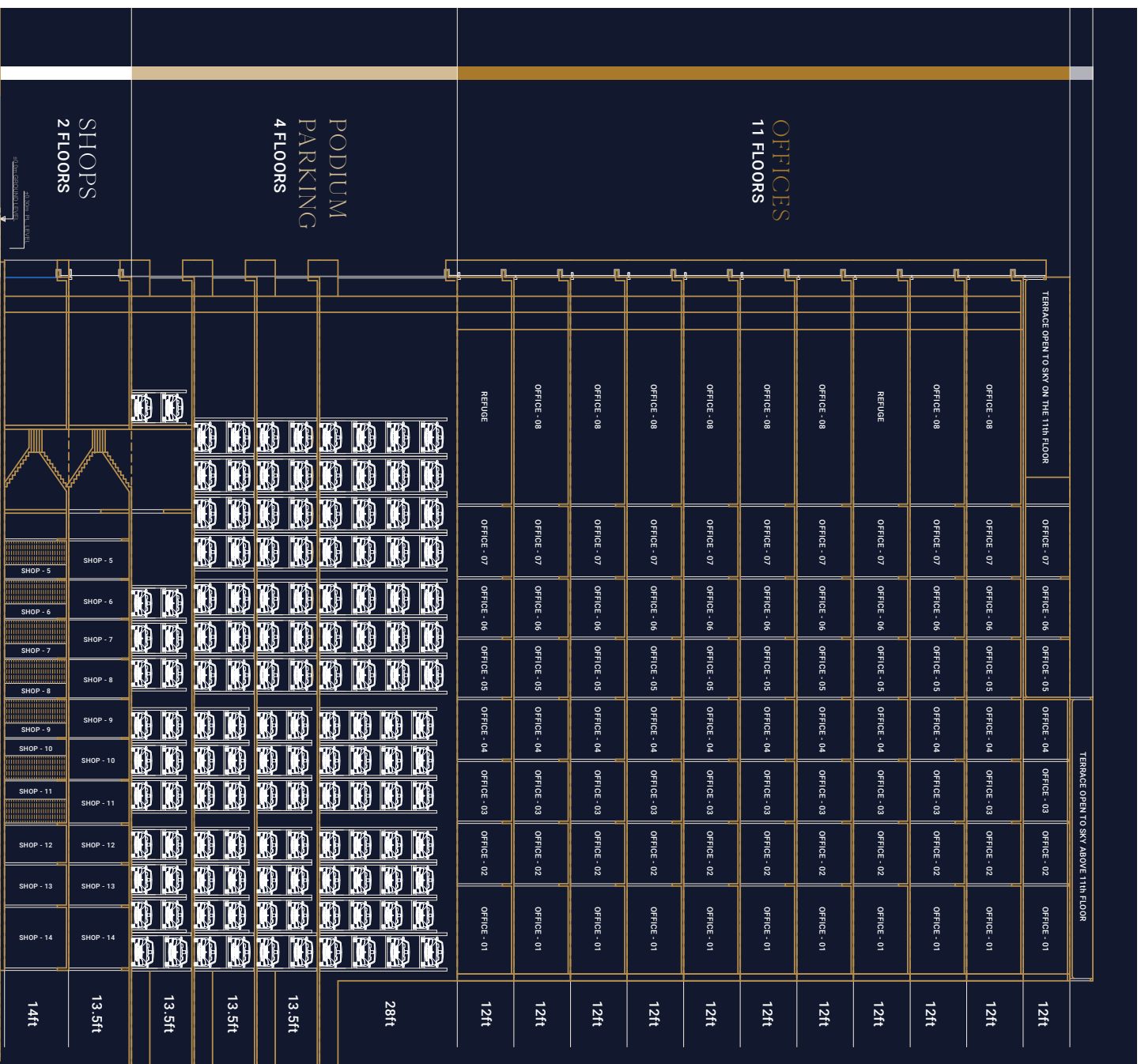




MODERN OFFICE LAYOUT

SECTION





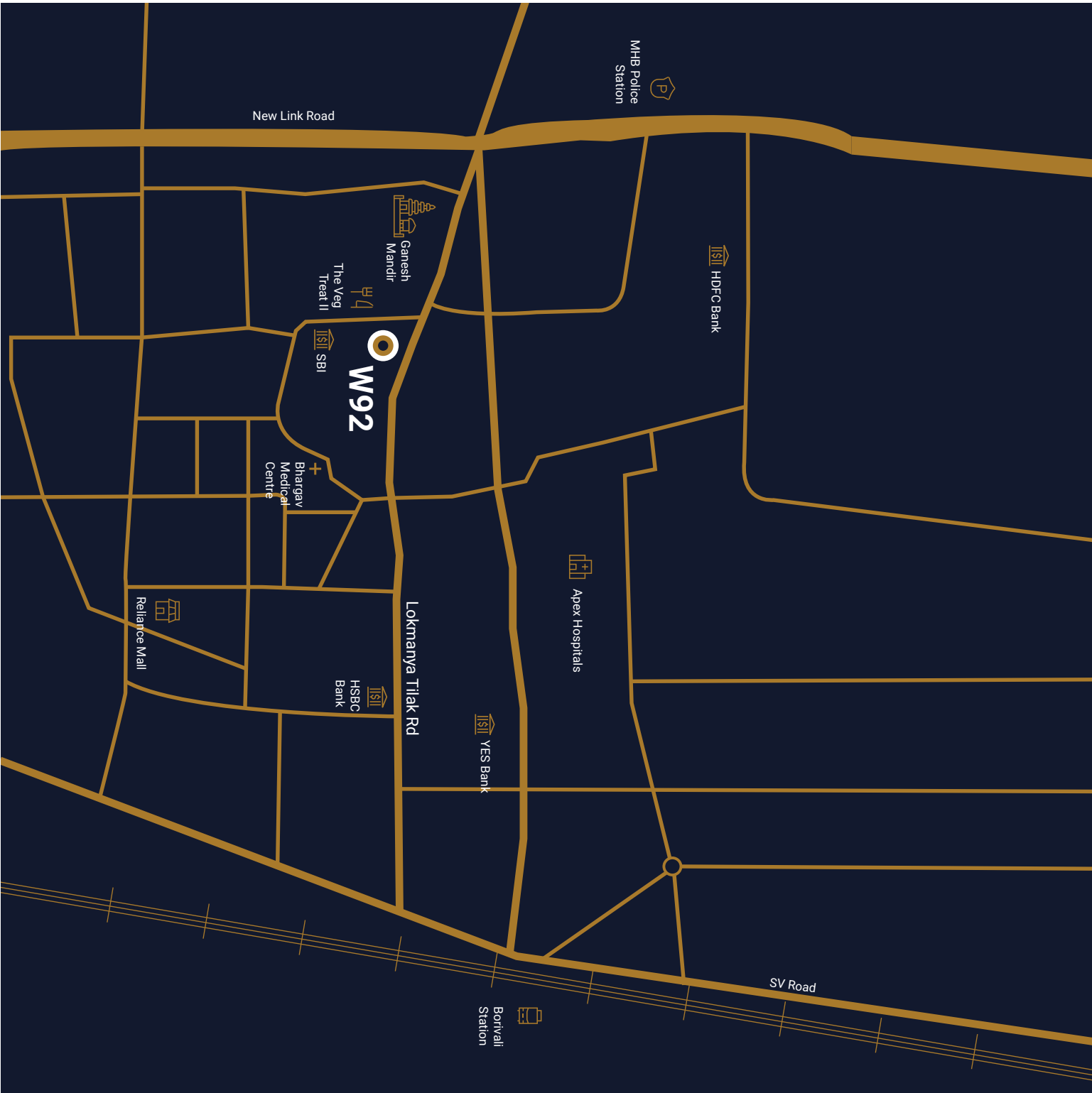
ONE ADDRESS. MANY POSSIBILITIES.

Located in the heart of Borivli, this modern marvel is easily accessible. Whether it's reaching to work for an important briefing or getting back home for a romantic dinner, we've made travelling for you a breeze.

◆ Borivli Station	1.5 km
◆ S V Road	1.5 km
◆ Proposed Metro Station	550 m
◆ Link Road	500 m
◆ Western Express Highway	3 km
◆ Vazira Naka Ganesh Mandir	200 m

SITE ADDRESS

W92, Junction of L T Road and 5th TPS road,
Opp. Veg Treat II, Vazira Naka, Borivli West,
Mumbai 400092



WELCOME TO **W92**

All set to become an architectural marvel, W92 is soon to be a hub for established businesses while merging both modern architecture and technology to create something that is commanding and imaginative.

