

2024

KB
RACKING

PRODUCT CATALOG

Commercial Racking Systems

**Simple Solutions
You Can Count On**

Trustworthy Systems for a Dependable
and Renewable Future



Company Profile

KB Racking is a Toronto – based manufacturer specializing in solar mounting systems for commercial rooftops across North America. We manufacture ballasted and anchored solar racking systems for flat roof projects, as well as customized solutions for metal roofs. KB Racking has offices in Canada as well as USA which allows us to service all North America.

Our mission is to face the future with positive change. We strive towards creating a 100% renewable energy future, one project at a time. With over 280+ megawatts generated in 50 states and provinces, KB Racking has come to represent quality engineering and on-site expertise that customers can count on. We continue to deliver simplified energy solutions to more people every day. With a combination of passion for innovation and ownership of our work, you will experience service quality that can be counted on as much as our products.



Our Products

At KB Racking, we offer custom solutions and innovative designs. From flat roof to metal roof racking, we offer a variety of solutions with proven quick installation speeds and lasting results. Our products are tested rigorously to meet all major industry standards. We use high grade aluminum for all of our components. This guarantees high resistance to corrosion, durability and provides customer satisfaction. We take pride in offering a variety of mounting systems, suitable for all clients, with the ability to customize them to meet your rooftop needs.

Our top system features are simple with few components, light-weight, high grade corrosion-free aluminum components and a 25-year warranty. All of our mounting systems are UL Certified. Our goal is to provide simple solutions you can count on.

All systems are certified.



SolarPTL
CERTIFIED
ANSI/UL 2703
(2011.01)
Sections:
12, 17, 18, 22



EKONORACK[®] 2.0

Flat Roof Mounting System

EKONORACK[®] 2.0 is the simplest non-penetrating solar mounting solution for commercial flat rooftops. The system's ETL Certification attests to its high standard of safety and robust design, allowing it to be grounded with only one grounding lug per array.

EKONORACK[®] 2.0's innovative design is composed of only one major component, acting as a ballast tray, windshield mount and multiple panel support. The system's pre-attached roof mats save time on installation and provide maximum protection for the roof.



Features

- ETL Certified to UL standard 2703
- Single point grounding/ bonding per array
- Customizable row spacing available
- Windshields include integrated press-fit nuts for a faster installation
- Integrated rubber roof protection mats for hassle-free installation
- Wind deflectors optimize performance and lower ballast requirements
- Fast installation with click-in module clamps: up to 3-4kW/man-hour
- High-grade, corrosion-free aluminum components
- 25-year standard product warranty, extended warranty available



Technical Specifications

Inclinations	5°, 7.5°, 10°, 12°, 15°, 20° (Landscape) 5° (Portrait)	Grounding Method	Grounded once per array -ETL Certified grounding method
Distribution Load	3 - 8 lbs/ ft²	Building Height	Up to 60' / 18.3m (higher upon request)
Orientation Panel	Landscape, Portrait	Ballast Weight	Dependent on wind zone and exposure category
Panel Type	Framed PV module	Wind Speed	Up to 170 mph (274 km/h)
Material	3000 series Aluminum	Wind Tunnel Testing	Complies with ASCE 7-10, NBCC 2005, IBC 2012 & OBC 2012 standards
Row Spacing	49.6 - 68.9' / 1.260 - 1.750m (Landscape) 84.3 - 96.5' / 2.140 - 2.450m (Portrait)	Certification	Conforms to UL STD 2703. Certified to ULC/ORD STD C1703
Roof Type	All types of flat roofs	Patent Number	US D774,874 S
Roof Pitch	Up to 5°		

AEROGRID®

Flat Roof Racking System

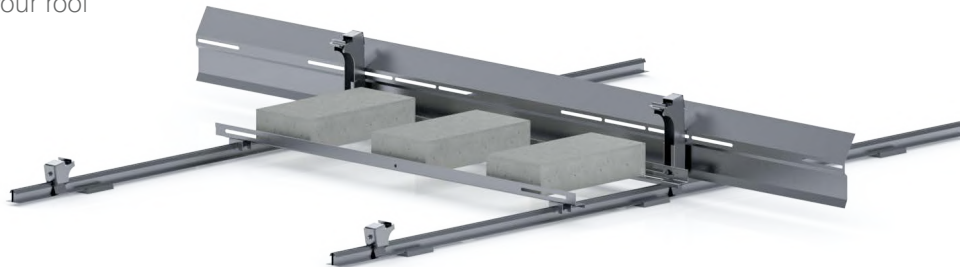
AEROGRID® is our latest flat roof racking system that is designed for the highest load rating in snow load regions across North America. The grid-based design features an integrated rail for windshield and ballast to reduce number of components. Offered in 5- and 10-degree tilt variations, the snap-in components provide an easy tool-less installation.

Aerogrid is a 100% green-zone clamping system that offers more panels per area and less racking per panel, making it one of the most versatile mounting systems in the market.



Features

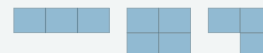
- Grid Based system (N/S and E/W rails)
- Green zone clamping (L/4 Clamping)
- Customizable row spacing
- PV module variability (1024-1344mm width, 1950-2434mm length)
- Snap-in components for easy tool-less installation
- Non-penetrating design prevents damage to your roof
- G90 Galvanized Steel components
- Integrated Press-fit nuts for a faster installation
- 25-year standard warranty



Technical Specifications

Tilt	5 & 10 Deg Landscape
Panel Type	Framed PV Module
Module Dimensions	1024-1344 mm Width, 1950 – 2434 mm Length, 30-50mm Thickness
Material	G90 Galvanized Steel
Row Spacing	1.260 – 1.925m (49.6" – 75.79") Landscape
Roof Pitch	Up to 5°
Grounding Method	Grounding once per array - ETL Certified grounding method
Building Height	Up to 60'/18.3m (higher upon request)
Ballast Weight	Dependent on wind zone and exposure category
Wind Speed	170 mph (274 km/h)

Wind Tunnel Testing	Boundary layer wind tunnel tested by RWDI – based on ASCE 7-16/IBC 2018 standards
Certification	Conforms to UL STD 2703. Certified to ULC/ORD STD C1703
Patent	Pending
Exposure Categories	· ASCE 7-10 – Exposure Category B, C, D · ASCE 7-16 – Exposure Category B, C, D
Roof Material	Any types of flat roofs
Grounding & Bonding	Fuse rating up to 30 amps
Minimum Array Size	



AERORACK[®]2.0

Flat Roof Mounting System

AERORACK[®]2.0 is the next generation of rail-based mounting solutions. KB Racki ng has refined its rail based solution to provide customers with the same core elements of integrated wire management and simple installation, at a more economical price.

AERORACK[®]2.0 features the same low ballast requirements and structural integrity as the original AeroRack, with a more aerodynamic design. The system offers customizable solutions with its flexibility in panel orientation, row spacing and tilt angle.



Features

- Rail based design provides stiffness, reducing ballast requirements and roof loads
- Non-penetrating design prevents damage to your roof
- Aluminum components ensure long lasting performance
- Pre-attached rubber mats offer additional protection for the roof
- 25-year standard product warranty, extended available
- Windshields include integrated press-fit nuts for a faster installation



Technical Specifications

Inclinations	5°, 10°, 12°, 15°, 20° (Landscape) 3, 5° (Portrait)	Roof Pitch	Up to 5°
Distribution Load	2- 5 lbs/ft ²	Grounding Method	Grounding once per array - ETL Certified
Orientation Panel	Landscape, Portrait	Building Height	Up to 60'/18.3m (higher upon request)
Panel Type	Framed PV module	Ballast Weight	Dependent on wind zone and exposure category
Material	3000 series Aluminum	Wind Speed	Up to 170 mph (274km/h)
Row Spacing	49.6 - 68.9" / 1.260 - 1.750m (Landscape) 84.3 - 96.5" / 2.140 - 2.450m (Portrait)	Wind Tunnel Testing	Complies with ASCE 7-10, NBCC 2005, IBC 2012 & OBC 2012 standards
Roof Type	All types of flat roofs	Certification	Conforms to UL STD 2703. Certified to ULC/ORD STD C1703

AERORACK[®] EAST WEST

Flat Roof Mounting System

AERORACK[®] EAST WEST is the latest aerodynamic rail-based mounting solution. KB Racking has refined its rail based solution with an east-west orientation, to provide customers with the same core elements of integrated wire management that allows for installers to install more panels, while saving space on the roof.

With an east-west configuration, this system offers best value by reducing costs and installation time.

AERORACK[®] EAST WEST features low ballast requirements and structural integrity, while offering customizable solutions with its flexibility in row spacing and tilt angle.



Features

- Rail based design provides stiffness, reducing ballast requirements and roof loads
- Non-penetrating design prevents damage to your roof
- Aluminum components ensure long lasting performance
- Pre-attached rubber mats offer additional protection for the roof
- 25-year standard product warranty, extended available
- Windshields include integrated press-fit nuts for a faster installation



Technical Specifications

Inclinations	5°, 10°, 12°, 15°, 20° (Landscape) 3°, 5° (Portrait)
Distribution Load	2 - 5 lbs/ ft ²
Orientation Panel	Landscape, Portrait
Panel Type	Framed PV module
Material	3000 series Aluminum
Row Spacing	0.2 - 15' / 0.1 - 0 m (Landscape Portrait)
Roof Type	All types of flat roofs

Roof Pitch	Up to 5°
Grounding Method	Grounding once per array - ETL Certified
Building Height	Up to 60'/18.3m (higher upon request)
Ballast Weight Wind	Dependent on wind zone and exposure category
Speed	Up to 170 mph (274km/h)
Wind Tunnel Testing	Complies with ASCE 7-10, NBCC 2005, IBC 2012 & OBC 2012 standards
Certification	Conforms to UL STD 2703. Certified to ULC/ORD STD C1703

ANCHORRACK®

Anchored Mounting System

ANCHORRACK® has been designed to eliminate rooftop ballasting and provide a system both affordable and favorable to weight-challenged roofs. Wood screws penetrate the roof surface to create a secure attachment against high wind loads while high-grade flashing allows for a permanent seal against the elements.

ANCHORRACK®'s installation is made simple with pre-punched screw holes, click-in module clamps, and lightweight aluminum components. The durable components are built-to-last with flexibility in tilt angle, row spacing and panel orientation, making it the most modular anchored systems on the market.



Features

- Conforms to UL standard 2703
- Fully anchored rooftop mounting solution with zero ballast
- Designed based on SEAOC's wind design guidelines for solar arrays
- Only 2 main components for rapid installation
- Durable flashing for a long-lasting, permanent seal
- 5" roof clearance to allow for rooftop obstacles
- Easy panel mounting with self-grounding, click-in module clamps
- 25-year standard product warranty, extended available



Technical Specifications

Inclinations	5°, 7.5°, 10°, 12°, 15°, 20° (Landscape) 5° (Portrait)	Roof Pitch	Up to 45°
Orientation Panel	Landscape, Portrait	Grounding Method	Grounding once per array - ETL Certified grounding method
Panel Type	Framed PV module	Flashing	Pre-attached tape and liner with secondary LPS sealant
Material	3000 series Aluminum	Building Height	Up to 60'/18.3m (higher upon request)
Row Spacing	49.6 - 68.9" / 1.260 - 1.750m (Landscape) 84.3 - 96.5" / 2.140 - 2.450m (Portrait)	Wind Speed	Up to 170 mph (274km/h)
Roof Type	All types of flat roofs	Certification	Conforms to UL STD 2703. Certified to ULC/ORD STD C1703

BARNRACK[®] 2.0

Pitched Roof Mounting System

BARNRACK[®] 2.0 is a corrugated-roof mounting solution, adding adaptability and flexibility for both fully-railed and shared-rail solar installations. The lightweight aluminum rails couple with corrugated roof connections providing a rigid solar platform and a design backed with leak-proof attachments.

BARNRACK[®] 2.0's adaptable design is complimented by its simple installation and feature-rich mounting rails. The KB10 rails offer integrated wire management, side mounting, and common fasteners for a clean and fast installation.



Features

- EPDM gaskets provide a secure, watertight attachment
- Integrated wire management
- Configured for fully-railed and shared-rail systems
- Side-mounted with T-bolts
- Low overall system weight
- 25-year standard product warranty, extended available



Technical Specifications

Distribution Load	1.5 - 3 lbs/ft ²	Rail Length	10', 20'
Inclinations	Flush	Configurations	Shared-Rail, Fully-Railed
Wind Speed	Up to 190mph	Roof Pitch	0° - 45°
Material	6000 series aluminum	Roof Type	All corrugated metal roofs
Module Type	All standard size framed PV modules	Grounding Method	ETL certified KB Konnect clamps
Wire Management	Built into KB10 Rail	Module Spacing	Customizable based on project requirements
Orientation	Landscape and Portrait	Roof Clearance	Up to 8" (Bottom of module to roof)
		Span Lengths	Dependent on project location, 3'- 8'

SEAMRACK® 2.0

Standing Seam Mounting System

SEAMRACK® 2.0 is a versatile standing seam solar mounting solution, featuring complete adaptability for both fully-railed and shared-rail mounting configurations. The system uses non-penetrating seam clamps for mounting directly to standing seams, without jeopardizing the integrity of the roof.

SEAMRACK® 2.0's adaptable design is complemented by its simple installation and feature-rich mounting rails. The KB10 rails offer integrated wire management, side mounting, and common fasteners for a clean and fast installation.



Features

- Integrated wire management
- Easy installation using only four components
- Configured for fully-railed and shared-rail systems
- Side-mounted with T-bolts
- Low overall system weight
- 25-year standard product warranty, extended available



Technical Specifications

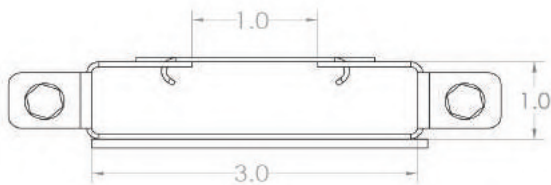
Distribution Load	1.5 - 3 lbs/ft ²	Rail Length	10', 20'
Inclinations	Flush	Configurations	Shared-Rail, Fully-Railed
Wind Speed	Up to 190mph	Roof Pitch	0° - 45°
Material	6000 series aluminum	Roof Type	All standing seam metal roofs
Module Type	All standard size framed PV modules	Grounding Method	ETL certified KB Konnect clamps
Wire Management	Built into KB10 Rail	Module Spacing	Customizable based on project requirements
Orientation	Landscape and Portrait	Roof Clearance	Up to 8" (Bottom of module to roof)
		Span Lengths	Dependent on project location, 3' - 8'

WIRE MANAGEMENT SOLUTION

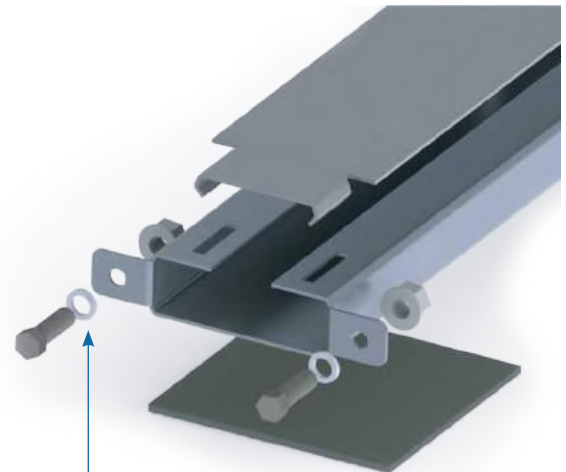
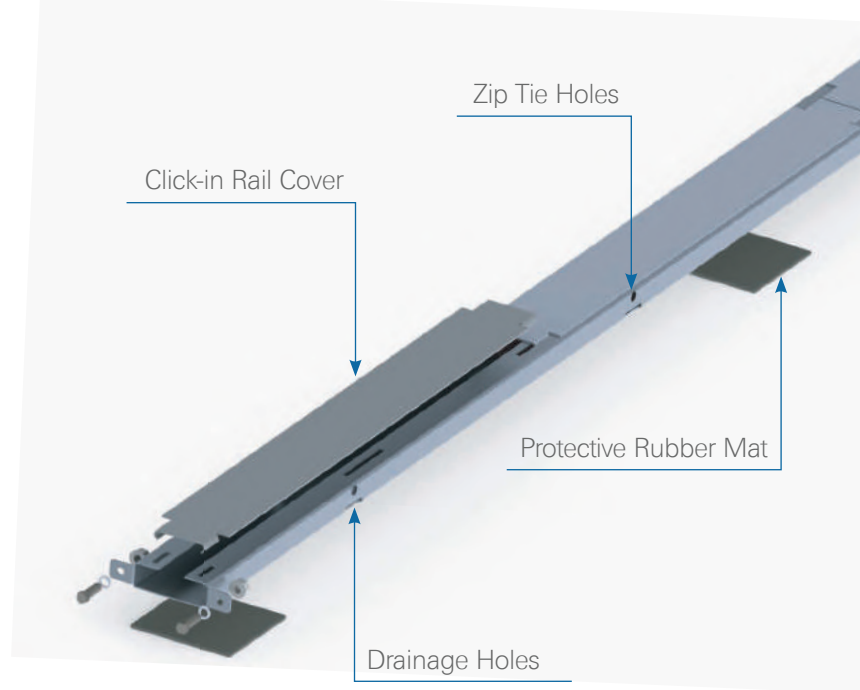
Wire Management Solution

KB Racking's **WIRE MANAGEMENT SOLUTION** allows installers to neatly organize north-south running electrical wires into one, compact channel which is engineered to integrate seamlessly with KB Racking's flat roof mounting systems.

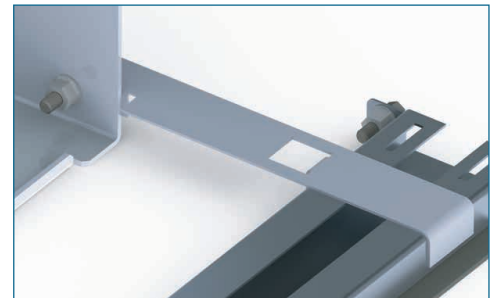
The system features pre-attached roof protection mats and click-in covers for a simple, tool-free installation and maximum protection against the elements. The innovative solution is designed to install 30% faster than standard wire management systems while maintaining the quality KB Racking is known for.



- ETL Certified to NEMA VE1 and CSA C22.2#126.1
- Pre-attached roof protection mats
- Compact design integrates seamlessly with KB Racking's systems
- Click-in rail covers for a tool-free, rapid installation
- Simple grounding once per run using nut and bolt fasteners
- Durable aluminum components for long-lasting performance



Electronically Bonding Nut and Bolt Connection



Optional Wire Management System Connectors Available

HIGH-CAPACITY MOUNTS

High-Capacity Mounting Solutions

KB Racking's High-capacity mounts (HCM) have been designed to provide additional support for the constantly evolving PV panel. HCMs can be added for additional support with XL PV panels, and also to provide reinforcement for areas with higher-than-average snow loads.

HCMs provide 6-point clamping along the frame of PV panels. They are compatible with standard frame PV panels, and are available with our **EKONORACK**[®] and **AERORACK**[®] solutions.



Landscape High Capacity Mount

Features

- Non-penetrating installation
- Single tool installation
- Integrated rubber roof protection mats for a hassle-free installation
- High-grade, corrosion-free aluminum components



Panel Manufacturer Approvals

Manufacturer	Module Model	Design Push Load Rating (Pa)
LONGi Solar	LRA-72HPH-XXXM	2400
Talesun	TP6L72M(H)	3600
Hanwha	Q.PEAK DUO-G8X	2260
Canadian Solar	CS3W-XXXMS	1600
JA Solar	JAM72D#0	1500
REC	TwinPeak 2S72	4000

*For specific panel approvals please contact KB Sales.

HIGH-CAPACITY MOUNTS

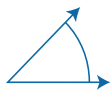
High-Capacity Mounting Solutions

The standard mid-supports are designed to accommodate module widths ranging from 992mm-1048mm.

Custom mid-supports can be designed to accommodate all panel ranges for high snow load region projects.



Portrait High Capacity Mount



Solutions for each tilt angle



Portrait High Capacity Mount



Landscape High Capacity Mount

Customer Testimonials

"I enjoy working with KB Racking. They are very attentive to detail and make sure that they are knowledgeable in both the technical and regulatory aspects of a project. They are our partners throughout the various stages; from the development and sale side until the project is completely installed."

Jacob Sussman,
Chief Operating Officer



"KB Racking's Ekonorack 2.0 has sped up our installation times from 10 panels an hour to close to 20 panels an hour. Their sales team is engaged and responsive, and the engineers we work with are accommodating and knowledgeable."

Ethan Goddard,
NABCEP-Certified Senior Project Manager



"Working with KB Racking was a great experience, they provided on time delivery with expedited delivery times allowing the project to be completed on time. The system was very easy to set up and install, allowing the project to proceed without any delays."

Matthew Bennett,
Operations Manager



"We had a project in an area with very high wind loads and were not allowed to install mechanical attachments, since it was a brand new TPO roof. KB racking provided us with the right product and plenty of support to get this project done. They also expedited the shipment of racking to meet our tight deadline. The install of the system went smooth. We are very pleased with the product and the service provided. Thank you! "

Nadine Pirker,
Commercial Solar Installation Supervisor



"Together with KB Racking we built one of the largest rooftop solar projects in Baltimore County. The custom row spacing available with the Ekonorack 2.0 allowed us to maximize roof space and reach our target of 1.67MW. The speed of installation was accelerated by the system's simplicity and their attentive project managers. KB Racking has become a trusted partner of RER Energy not only for their products but also their exemplary customer service."

Mike Barnes,
Senior Project Manager



OVER 280+ MW GENERATED & 900 + PROJECTS INSTALLED





Contact

1050 King St W. Suite 03A104
Toronto, ON M6K 9C7

177 East Colorado Boulevard,
Pasadena, CA 91105



www.kbracking.com

1.888.6613204

info@kbracking.com