



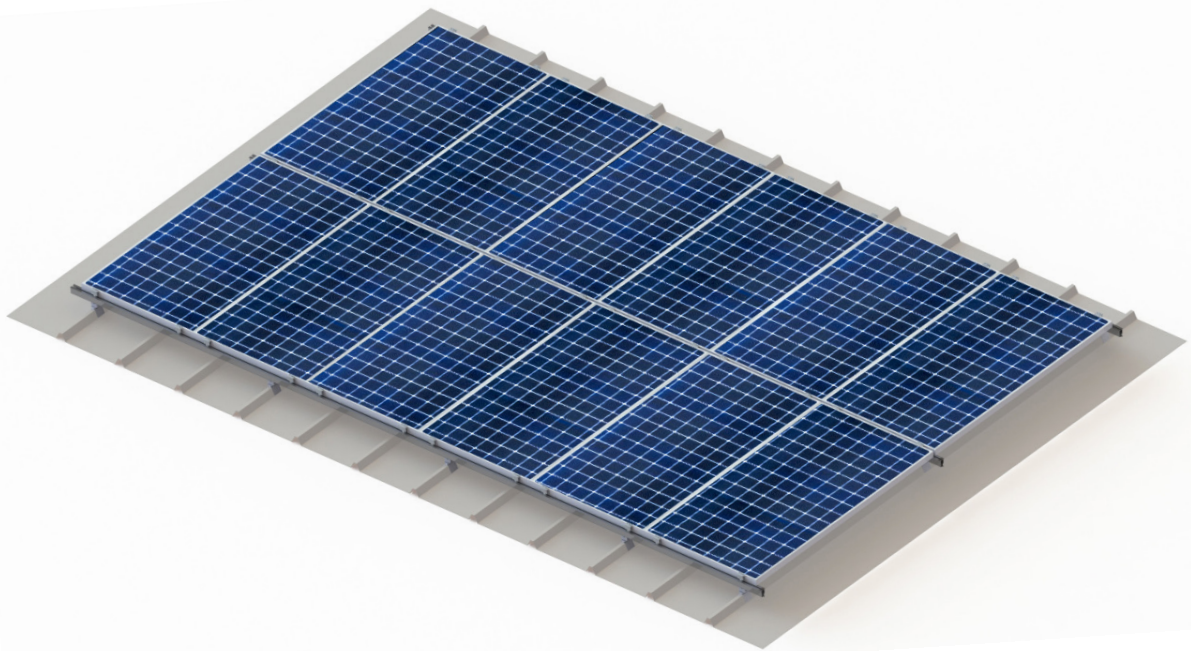
BARNRACK2.0

Pitched Roof Mounting System

LOW COST - NO LEAKS - QUICK INSTALL

BARNRACK2.0 is a corrugated-roof mounting solution, adding adaptability and flexibility for both fully-railed and shared-rail solar installations. The lightweight aluminum rails couple with corrugated roof connections providing a rigid solar platform and a design backed with leak-proof attachments.

BARNRACK2.0's adaptable design is complimented by its simple installation and feature-rich mounting rails. The KB10 rails offer integrated wire management, side mounting, and common fasteners for a clean and fast installation.

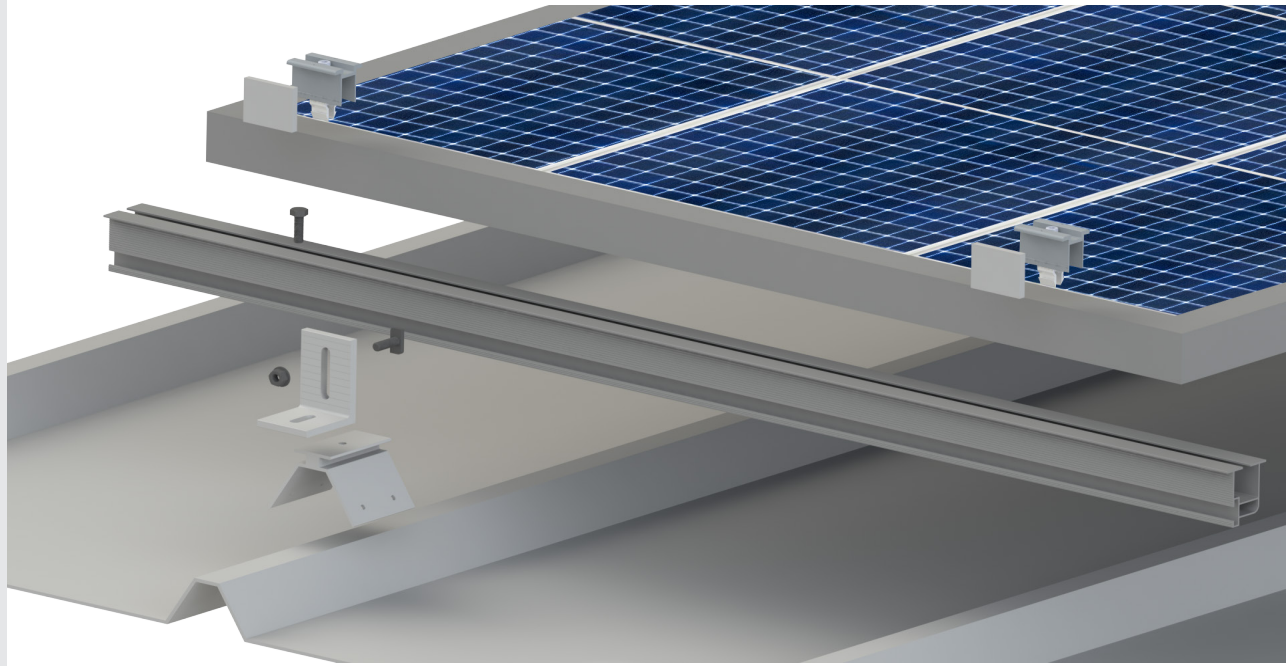


FEATURES

- EPDM Gaskets Provide a Secure, Watertight Attachment
- Integrated Wire Management
- Configured for Fully-Railed and Shared-Rail Systems
- Side-Mounted with T-Bolts
- Low Overall System Weight
- 25-Year Standard Product Warranty

BARNRACK 2.0

Pitched Roof Mounting System



TECHNICAL

SPECIFICATIONS

Distribution Load	1.5 - 3 lbs/ft ²
Module Type	Framed PV Module
Orientation	Landscape, Portrait
Material	Aluminum, Stainless Steel Hardware
Inclinations	Flush
Module Spacing	Customizable Based on Project Requirements
Wire Management	Built into KB10 Rail
Rail Length	10', 20'
Configurations	Shared-Rail, Fully-Railed
Rooftop Compatibility	All Corrugated Metal Roofs
Roof Pitch	0° - 45°
Roof Clearance	Up to 8" (Bottom of Module to Roof)
Wind Speed	Up to 190 mph
Grounding Method	ETL Certified KB Konnect Clamps
Span Lengths	Dependent on Project Location, 3' - 8'



Fully-Railed
Two rails per row of modules



Shared-Rail
Rails shared between modules

MADE IN AMERICA



MADE IN CANADA

www.kbracking.com · 1.888.661.3204 · info@kbracking.com