



PRODUCT CATALOG

Commercial Racking Systems

**Simple Solutions
You Can Count On**

Trustworthy Systems for a
Dependable and Renewable
Future

KB
RACKING

COMPANY PROFILE



KB Racking provides tailored solar mounting solutions for commercial rooftops across North America. We design, manufacture, and deliver custom racking solutions for both ballasted and anchored flat roofs, as well as metal rooftop systems. With a diversified portfolio of mounting systems, we're equipped to support solar projects of all size and requirements across the continent. Founded in 2010, we've built a reputation as trusted experts in the field - known for delivering Simple Solutions You Can Count On. With over 300 megawatts installed across 50 states and provinces, KB Racking stands for quality engineering, responsive service, and consistent, reliable results.

We believe in driving real, actionable change toward a renewable energy future- one project at a time. Our systems are built for speed, durability, and long-term performance, but it's our people who truly make the difference. Our team is fully invested in your success, providing reliable communication, dependable lead times, and on-site support including site visits and installation training. We pride ourselves on building strong, transparent partnerships and working closely with every customer to find the right solution for their rooftop.

At KB Racking, we don't just deliver mounting systems, we deliver confidence. Because when it comes to solar, we know what matters: simplicity, reliability, and results.





OUR PRODUCTS

Our innovative systems are built for fast installation and long-lasting performance, with every product rigorously tested to meet all major industry standards.

We use high-grade aluminum and galvanized steel components, ensuring exceptional durability and long-term customer satisfaction. We know every rooftop is different - that's why we provide customizable solutions designed to meet the unique specifications of your project.

Our systems are light-weight, feature few components, and are backed by a 25-year product warranty. All of our mounting systems are UL Certified. Our goal is to provide simple solutions you can count on.



GREEN ZONE CLAMPING - LOW COST - QUICK INSTALL

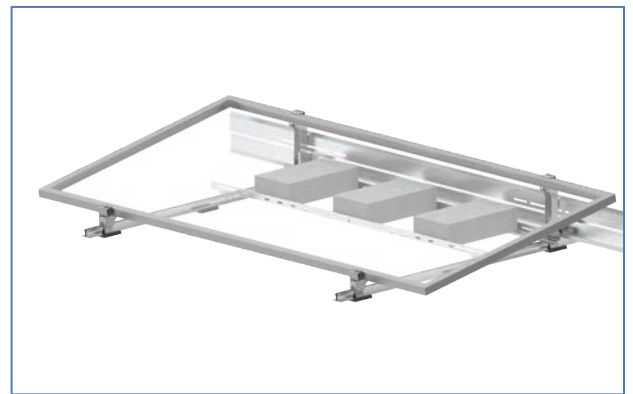
AeroGrid® is our innovative flat roof solar racking system designed for the highest load rating in wind snow load regions across North America - all while maintaining PV Module warranties.

AeroGrid® is a green-zone clamping system that offers more panels per area with less racking per panel, making it low cost while being one of the most versatile mounting systems on the market. It's grid-based design features an integrated rail for ballasting to reduce the number of components. Offered in 5- and 10- degree landscape tilt variations, the click-in components provide an easy, tool-less installation.



Features

- Grid Based System with Low Ballast Requirements
- Conforms to UL 2703, UL 3741, CSA T.I.L. A-40:2020
- Green Zone Clamping (Suitable for High Snow and Wind Loads)
- Customizable Row Spacing (Increase Module Density on Roof)
- Non-Penetrating Design Prevents Damage to Your Roof
- Integrated Clinch Nuts and Studs for Faster Installation
- Click-in Components for Easy Tool-Less Installation
- Flexible Order of Operations for Installation
- 25-Year Standard Product Warranty



Technical Specifications

Module Tilt	5°, 10° (Landscape)	Rooftop Compatibility	All Flat Roofs
Module Compatibility	990+ mm Width, 1700+ mm Length, 30+ mm Thickness	Roof Pitch	Up to 5°
Row Spacing	Customizable. Standard 5° Spacing, 8.99" (Inter-Row Spacing), Standard 10° Spacing, (15"/17" Inter-Row Spacing)	Building Height	Any
Material	G90 Galvanized Steel Components, Aluminum, Stainless Steel Hardware	Wind Speed	Up to 180 mph
Ballast Block Size	Nominal 4" x 8" x 16" (32 lbs.) and/or 2" x 8" x 16" (16 lbs.)	Wind Tunnel Testing	Boundary Layer Wind Tunnel Tested by RWDI
Roof Attachment	Ballasted, Hybrid or Fully Anchored	Certifications	UL 2703, UL 3741, CSA T.I.L. A-40:2020
Attachment Compatibility	OMG, U-Anchor (Others Available Upon Request)	Grounding	One Grounding Lug Required Per Array

GREEN ZONE CLAMPING - LOW COST - MINIMAL BALLASTING

AeroGrid® East/West is our flat roof solar racking solution that redefines efficiency and versatility. Designed with an east-west orientation, it transforms your roof into a high-performance, space-optimized solar system. Engineered with precision, this system features click-in components that allow for effortless, tool-free installation. Its non-penetrating, ballast-minimized design protects your roof while meeting stringent wind and snow load requirements.

AeroGrid® East/West offers flexible module compatibility, adjustable row spacing, and a green-zone clamping approach to maximize energy production while minimizing shading. Integrated clinch nuts and studs speed up assembly, reducing labor costs and install time. Backed by a 25-year standard warranty, it's a solution built for high performance reliability.



Features

- Grid Based System with Low Ballast Requirements
- Best-in-Class Price per Watt
- Conforms to UL2703, UL3701, CSA T.I.L. A-40:2020
- Green Zone Clamping (Suitable for High Snow and Wind Loads)
- Non-Penetrating Design Prevents Damage to Your Roof
- Integrated Clinch Nuts & Studs for a Faster Installation
- Click-in Components for Easy Tool-Less Installation
- Flexible Order of Operations for Installation
- 25-Year Standard Product Warranty



Technical Specifications

Module Tilt	10° (Landscape)	Rooftop Compatibility	All Flat Roofs
Module Compatibility	990+ mm Width, 1700+ mm Length, 30+ mm Thickness	Roof Pitch	Up to 5°
Row Spacing	Up to 5" (Peak-to-Peak), up to 8" (Valley-to-Valley)	Building Height	Any
Material	G90 Galvanized Steel, Aluminum, Stainless Steel Hardware	Wind Speed	Up to 180 mph
Ballast Block Size	Nominal 4" x 8" x 16" (32 lbs.) and/or 2" x 8" x 16" (16 lbs.)	Exposure Categories	B, C, or D
Roof Attachment	Ballasted, Hybrid or Fully Anchored	Wind Tunnel Testing	Boundary Layer Wind Tunnel Tested by RWDI
Attachment Compatibility	OMG, U-Anchor (Others Available Upon Request)	Certifications	UL 2703, UL 3741, CSA T.I.L. A-40:2020
		Grounding	One Grounding Lug Required Per Array

LOW COST- LIGHT WEIGHT - EASY TO INSTALL

EkonoRack 2.0 is the simplest non-penetrating solar mounting solution for commercial flat rooftops. The system's ETL Certification attests to its high standard of safety and robust design, allowing it to be grounded with only one grounding lug per array.

EkonoRack 2.0's innovative design is composed of only one major component, acting as a ballast tray, windshield mount and multiple panel support. The system's pre-attached roof mats save time on installation and provide maximum protection for the roof.



Features

- Conforms to UL 2703, UL 3741, CSA T.I.L. A-40:2020
- Single Point Grounding/Bonding Per Array
- Customizable Row Spacing Available
- Windshields Optimize Performance and Lower Ballast Requirements
- Windshields Fasten into Integrated Clinch Nuts for Faster Installation
- Integrated Rubber Roof Protection Mats for Hassle-Free Installation
- Fast Installation with Click-In Module Clamps: Up to 3-4 kW/Man-Hour
- High-Grade, Corrosion-Free Aluminum Components
- 25-Year Standard Product Warranty



Technical Specifications

Module Tilt	5°, 10°, 15°, 20° (Landscape) 5° (Portrait)	Rooftop Compatibility	All Flat Roofs
Distribution Load	3-12 lbs/ft ²	Building Height	Up to 60' / 18.3m (Higher Upon Request)
Module Type	Framed PV Module	Wind Speed	Up to 170 mph
Material	Aluminum, Stainless Steel Hardware	Wind Tunnel Testing	Boundary Layer Wind Tunnel Tested by RWDI
Ballast Block Size	Nominal 4" x 8" x 16" (32 lbs.), 2" x 8" x 16" (16 lbs.), and/or 2.25" x 4" x 8" (5lbs.)	Certifications	UL 2703, UL 3741, CSA T.I.L. A-40:2020
Ballast Weight	Dependent on Wind Zone and Exposure Category	Grounding	One Grounding Lug Required Per Array
Row Spacing	49.6" - 68.9" / 1.26m - 1.75m (Landscape) 84.3" - 96.5" / 2.14m - 2.45m (Portrait)	Patent Number	US D774,874 S
Roof Pitch	Up to 5°		

LIGHT WEIGHT - NON PENETRATING - EASY TO INSTALL

AeroRack 2.0 is the next generation of rail-based mounting solutions. KB Racking has refined its rail based solution to provide customers with the same core elements of integrated wire management and simple installation, at an economical price. The system offers customizable solutions with its flexibility in panel orientation, row spacing and tilt angle.

AeroRack 2.0 features the same low ballast requirements and high structural integrity as the original AeroRack, with a more aerodynamic design.



Features

- Conforms to UL 2703, CSA T.I.L. A-40:2020
- Rail Based Design Provides Stiffness, Reducing Ballast Requirements and Roof Loads
- Non-Penetrating Design Prevents Damage to Your Roof
- Windshields Include Integrated Clinch Nuts for a Faster Installation
- Aluminum Components Ensure Long Lasting Performance
- Pre-Attached Rubber Mats Offer Additional Protection for the Roof
- 25-Year Standard Product Warranty



Technical Specifications

Module Tilt	5°, 10°, 15°, 20° (Landscape) 5° (Portrait)	Building Height	Up to 60' / 18.3m (Higher Upon Request)
Distribution Load	2- 10 lbs/ft ²	Ballast Weight	Dependent on Wind Zone and Exposure Category
Module Type	Framed PV Module	Wind Speed	Up to 170 mph
Material	Aluminum, Stainless Steel Hardware	Wind Tunnel Testing	Boundary Layer Wind Tunnel Tested by RWDI
Ballast Block Size	Nominal 4" x 8" x 16" (32 lbs.), 2" x 8" x 16" (16 lbs.), and/or 2.25" x 4" x 8" (5lbs.)	Certification	UL 2703, CSA T.I.L. A-40:2020
Row Spacing	49.6" - 68.9" / 1.260m - 1.750m (Landscape) 84.3" - 96.5" / 2.140m - 2.450m (Portrait)	Grounding Method	One Grounding Lug Per Array
Roof Type	All Flat Roofs		
Roof Pitch	Up to 5°		

LIGHTWEIGHT - NON PENETRATING - EASY TO INSTALL

AeroRack® East/West is the latest aerodynamic rail-based mounting solution. KB Racking has refined its rail based solution with an east-west orientation, to provide customers with the same core elements of integrated wire management that allows for installers to install more panels, while saving space on the roof. With an east-west configuration, this system offers the best value by reducing costs and installation time.

AeroRack® East/West features low ballast requirements and high structural integrity, while offering customizable solutions with its flexibility in row spacing and tilt angle.



Features

- Conforms to UL 2703, CSA T.I.L. A-40:2020
- Rail Based Design Provides Stiffness, Reducing Ballast Requirements and Roof Loads
- Non-Penetrating Design Prevents Damage to Your Roof
- Windshields Include Integrated Clinch Nuts for a Faster Installation
- Aluminum Components Ensure Long Lasting Performance
- Pre-Attached Rubber Mats Offer Additional Protection for the Roof
- 25-Year Standard Product Warranty



Technical Specifications

Module Tilt	5°, 10°, 15°, 20° (Landscape) 5° (Portrait)	Building Height	Up to 60' / 18.3m (Higher Upon Request)
Distribution Load	2-10 lbs/ft ²	Ballast Weight	Dependent on Wind Zone and Exposure Category
Module Type	Framed PV Module	Wind Speed	Up to 170 mph
Material	Aluminum, Stainless Steel Hardware	Wind Tunnel Testing	Boundary Layer Wind Tunnel Tested by RWDI
Ballast Block Size	Nominal 4" x 8" x 16" (32 lbs.), 2" x 8" x 16" (16 lbs.), and/or 2.25" x 4" x 8" (5lbs.)	Certification	UL 2703, CSA T.I.L. A-40:2020
Row Spacing	0.2" - 15" / 0.01m - 0.4m (Landscape/Portrait)	Grounding	One Grounding Lug Per Array
Rooftop Compatibility	All Flat Roofs		
Roof Pitch	Up to 5°		

ZERO BALLAST - COST EFFICIENT - EASY TO INSTALL

AnchorRack® has been designed to eliminate rooftop ballasting and provide a system both affordable and favorable to weight-challenged roofs. The screws penetrate the roof surface to create a secure attachment against high wind loads while high-grade flashing allows for a permanent seal against the elements.

AnchorRack®'s installation is made simple with pre-punched screw holes, click-in module clamps, and lightweight aluminum components. The durable components offer flexibility in tilt angle, row spacing and panel orientation, making it the most modular anchored system on the market.



Features

- Conforms to UL 2703, CSA T.I.L. A-40:2020
- Fully Anchored Rooftop Mounting Solution with Zero Ballast
- Designed Based on SEAOC's Wind Design Guidelines for Solar Arrays
- Only 2 Main Components for Rapid Installation
- Durable Flashing for a Long-Lasting, Permanent Seal
- 5" Roof Clearance to Allow for Rooftop Obstacles
- Easy Panel Mounting with Self-Grounding, Click-In Module Clamps
- 25-Year Standard Product Warranty



Technical Specifications

Module Tilt	5°, 10°, 15°, 20° (Landscape) 5° (Portrait)	Wind Speed	Up to 170 mph for Exposure B; 117 mph for Exposure C
Module Type	Framed PV module	Certifications	UL 2703, CSA T.I.L. A-40:2020
Material	Aluminum, Stainless Steel	Grounding	One Grounding Lug Required Per Array
Row Spacing	49.6" - 68.9" / 1.260m - 1.750m (Landscape) 84.3" - 96.5" / 2.140m - 2.450m (Portrait)	Flashing	Pre-Attached Tape and Liner with Secondary LPS Sealant
Rooftop Compatibility	All Flat Roofs (Silicone not Compatible)		
Roof Pitch	Up to 45°		
Building Height	Up to 60' / 18.3m (Higher Upon Request)		

LIGHTWEIGHT - NON PENETRATING - EASY TO INSTALL

BarnRack 2.0 is a corrugated-roof mounting solution, adding adaptability and flexibility for both fully-railed and shared-rail solar installations. The lightweight aluminum rails couple with corrugated roof connections providing a rigid solar platform and a design backed with leak-proof attachments.

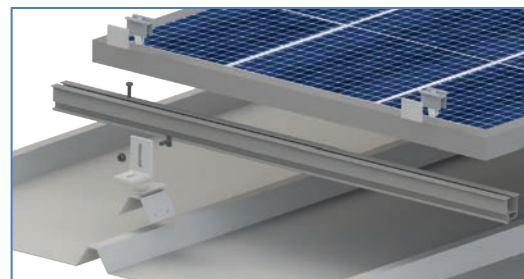
BarnRack 2.0's adaptable design is complimented by its simple installation and feature-rich mounting rails.

The KB10 rails offer integrated wire management, side mounting, and common fasteners for a clean and fast installation.



Features

- EPDM Gaskets Provide a Secure, Watertight Attachment
- Integrated Wire Management
- Configured for Fully-Railed and Shared-Rail Systems
- Side-Mounted with T-Bolts
- Low Overall System Weight
- 25-Year Standard Product Warranty



Technical Specifications

Distribution Load	1.5 - 3 lbs/ft ²	Rooftop Compatibility	All Corrugated Metal Roofs
Module Type	Framed PV Module	Roof Pitch	0° - 45°
Orientation	Landscape, Portrait	Roof Clearance	Up to 8" (Bottom of Module to Roof)
Material	Aluminum, Stainless Steel Hardware	Wind Speed	Up to 190 mph
Inclinations	Flush	Grounding Method	ETL Certified KB Konnect Clamps
Module Spacing	Customizable Based on Project Requirements	Span Lengths	Dependent on Project Location, 3' - 8'
Wire Management	Built into KB10 Rail		
Rail Length	10', 20'		
Configurations	Shared-Rail, Fully-Railed		

SEAMRACK 2.0



LOW COST - NON PENETRATING - QUICK INSTALL

SeamRack 2.0 is a versatile standing seam solar mounting solution, featuring complete adaptability for both fully-railed and shared-rail mounting configurations. The system uses non-penetrating seam clamps for mounting directly to standing seams, without jeopardizing the integrity of the roof.

SeamRack 2.0's adaptable design is complimented by its simple installation and feature-rich mounting rails.

The KB10 rails offer integrated wire management, side mounting, and common fasteners for a clean and fast installation.



Features

- Integrated Wire Management
- Easy Installation Using Only Four Components
- Configured for Fully-Railed and Shared-Rail Systems
- Side-Mounted with T-Bolts
- Low Overall System Weight
- 25-Year Standard Product Warranty



Technical Specifications

Distribution Load	1.5 - 3 lbs/ft ²	Rooftop Compatibility	All Standing Seam Metal Roofs
Module Type	Framed PV Module	Roof Pitch	0° - 45°
Orientation	Landscape, Portrait	Roof Clearance	Up to 8" (Bottom of Module to Roof)
Material	Aluminum, Stainless Steel Hardware	Wind Speed	Up to 190 mph
Inclinations	Flush	Grounding	ETL Certified KB Connect Clamps
Module Spacing	Customizable Based on Project Requirements	Span Lengths	Dependent on Project Location, 3' - 8'
Wire Management	Built into KB10 Rail		
Rail Length	10', 20'		
Configurations	Shared-Rail, Fully-Railed		

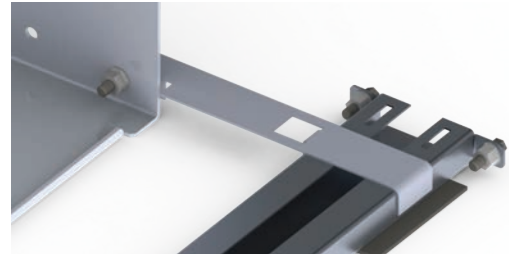
WIRE MANAGEMENT SOLUTION



LIGHTWEIGHT - NON PENETRATING - EASY TO INSTALL

KB Racking's Wire Management Solution allows installers to neatly organize north-south running electrical wires into one, compact channel which is engineered to integrate seamlessly with KB Racking's flat roof mounting systems.

The system features pre-attached roof protection mats and click-in covers for a simple, tool-free installation and maximum protection against the elements. The innovative solution is designed to install 30% faster than standard wire management systems while maintaining the quality KB Racking is known for.



Optional Wire Management System Connectors Available

Features

ETL Certified to NEMA VE1 and CSA C22.2#126.1

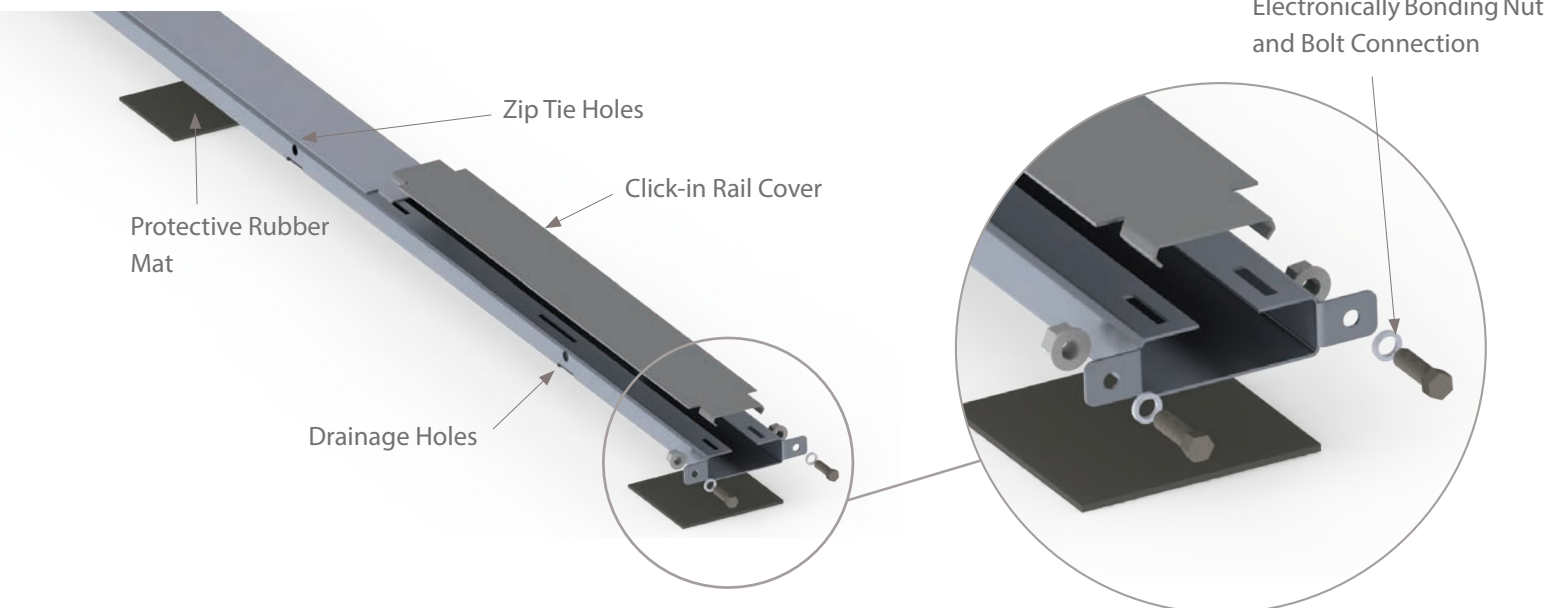
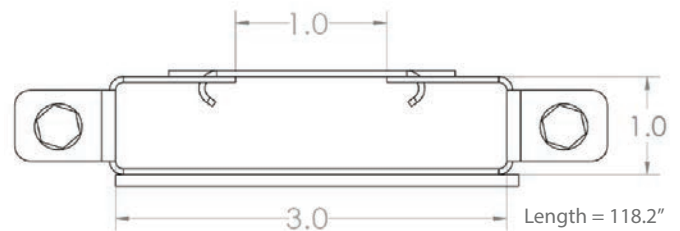
Pre-Attached Roof Protection Mats

Compact Design Integrates Seamlessly with KB Racking's Systems

Click-In Rail Covers for a Tool-Free, Rapid Installation

Simple Grounding Once Per Run Using Nut And Bolt Fasteners

Durable Aluminum Components For Long-Lasting Performance



HIGH-CAPACITY MOUNTS

HIGH-CAPACITY MOUNTS

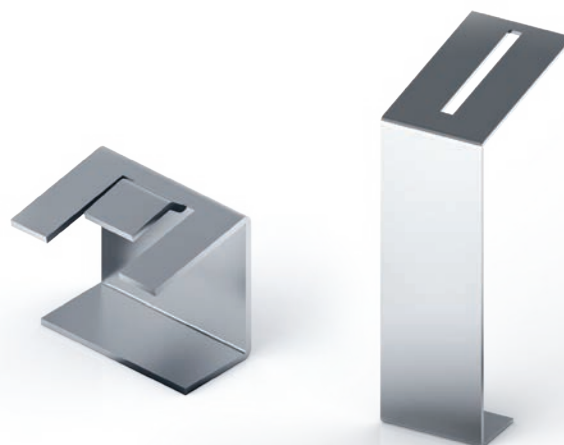
KB Racking's High-Capacity Mounts (HCM) have been designed to provide additional support for the constantly evolving PV module. HCM's can be added for additional support with large format modules and also provide reinforcement for high snow-load areas with higher-than-average snow loads.

HCM's provide 6-point clamping along the frame of PV modules. They are compatible with standard frame large format modules, and are available with our EkonoRack and AeroRack solutions.



Features

- Non-Penetrating Installation
- Single Tool Installation
- Integrated Rubber Roof Protection Mats for a Hassle-Free Installation
- High-Grade, Corrosion-Free Aluminum Components



Landscape High-Capacity Mount

The standard mid-supports are designed to accommodate module widths at 990+ mm. Custom mid-supports can be designed to accommodate panel ranges for high snow load region projects.



Portrait High-Capacity Mount



Portrait High-Capacity Mount



Landscape High-Capacity Mount

CUSTOMER TESTIMONIALS

"I enjoy working with KB Racking. They are very attentive to detail and make sure that they are knowledgeable in both the technical and regulatory aspects of a project. They are our partners throughout the various stages; from the development and sale side until the project is completely installed."

Jacob Sussman,
Chief Operating Officer



"KB Racking's EkonoRack2.0 has sped up our installation times from 10 panels an hour to close to 20 panels an hour. Their sales team is engaged and responsive, and the engineers we work with are accommodating and knowledgeable."

Ethan Goddard,
NABCEP-Certified Senior Project Manager



"Working with KB Racking was a great experience, they provided on time delivery with expedited delivery times allowing the project to be completed on time. The system was very easy to set up and install, allowing the project to proceed without any delays."

Matthew Bennett,
Operations Manager



"We have been working with KB Racking's roof mounted solutions for at least 3 years. During this time, we have found their team is super supportive, responsive to requests, and a pleasure to work with."

Anson Moran,
Vice President Operations



"We had a project in an area with very high wind loads and were not allowed to install mechanical attachments, since it was a brand new TPO roof. KB racking provided us with the right product and plenty of support to get this project done. They also expedited the shipment of racking to meet our tight deadline. The install of the system went smooth. We are very pleased with the product and the service provided. Thank you!"

Nadine Pirker,
Commercial Solar Installation Supervisor



"Together with KB Racking we built one of the largest rooftop solar projects in Baltimore County. The custom row spacing available with the EkonoRack 2.0 allowed us to maximize roof space and reach our target of 1.67MW. The speed of installation was accelerated by the system's simplicity and their attentive project managers. KB Racking has become a trusted partner of RER Energy not only for their products but also their exemplary customer service."

Mike Barnes,
Senior Project Manager



OVER 300+ MW GENERATED & 1000+ PROJECTS INSTALLED





CONTACT

www.kbracking.com

1.888.661.3204

info@kbracking.com



1050 King St W, Toronto ON, M6K 0C7

KB
RACKING