

QuietMod™

Industrial Modular
Panel Systems



AGENDA

OVERVIEW

Mod Panel Breakdown

CONSTRUCTION

How do you put it
together

APPLICATIONS

Where is it used

CASE STUDY

Automotive Manufacturing
Plant & Generator Enclosure

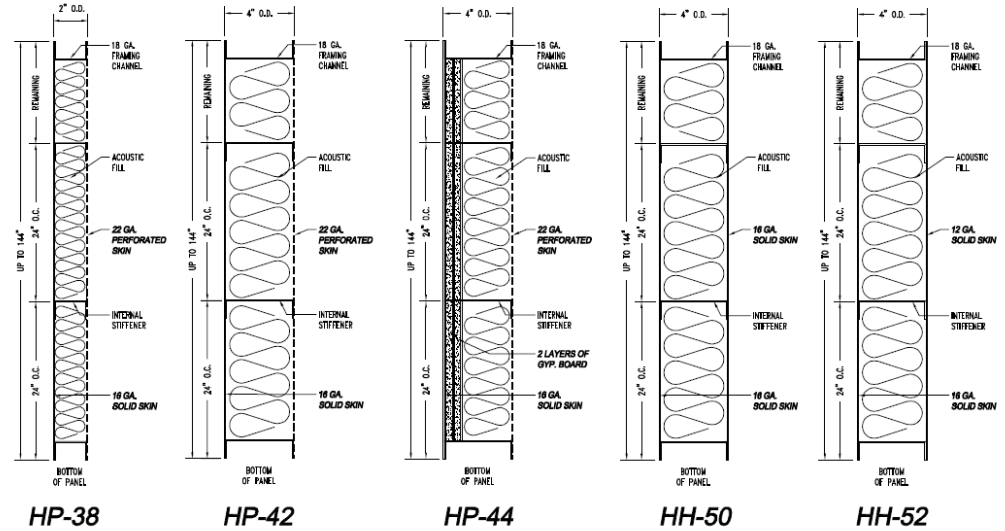
MOD PANEL OVERVIEW

Mod Panel



Short for “Modular Panel”

Panels are easily
assembled/disassembled to
construct walls & ceilings



Side Section View: Mod Panel

PERFORMANCE

Acoustic Performance Data

Octave Band Center Frequency, Hz	125	250	500	1K	2K	4K	STC
----------------------------------	-----	-----	-----	----	----	----	-----

Sound Transmission Loss Data, dB

QuietMod Panels:

H/P 38 - 2" Thick	24	25	33	43	50	55	38
H/P 42 - 4" Thick	23	31	40	49	56	62	42
H/P 44 - 4" Thick	27	34	41	46	43	59	44
H/P 50 - 4" Thick	29	37	48	56	57	54	50
H/H 50 - 4" Thick	26	44	50	54	57	64	50
H/H 52 - 4" Thick	37	43	47	53	54	57	52
H/H 54 - 4" Thick	40	46	51	55	58	62	54
H/H 59 - 10" Thick	43	45	56	66	67	77	59

All tests performed by Riverbank Acoustical Laboratories, an independent NV LAP accredited acoustical testing facility. The test method conforms with ASTM Designations E90-99 or E90-02 and E413-82.

Sound Absorption Coefficients

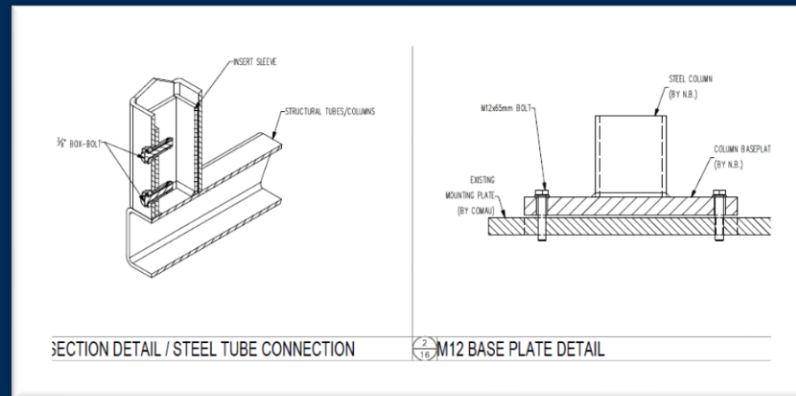
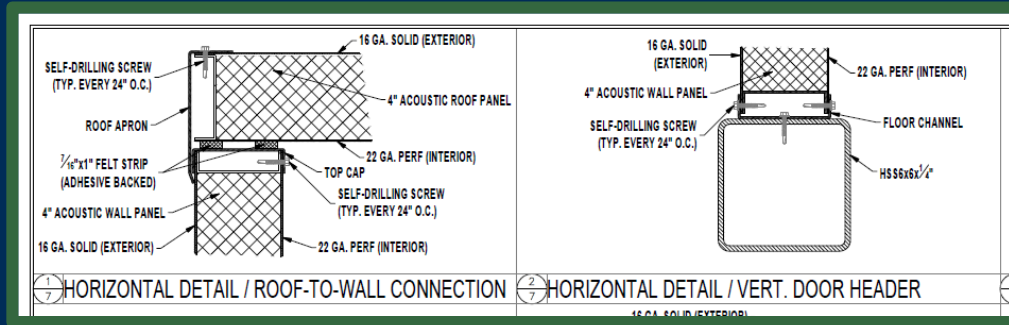
Octave Band Center Frequency, Hz	125	250	500	1K	2K	4K	NRC
----------------------------------	-----	-----	-----	----	----	----	-----

QuietMod Panels:

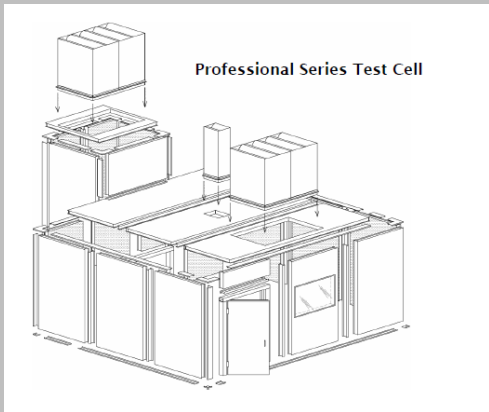
H/P 38 - 2" Thick	0.26	0.53	1.00	1.03	0.97	1.02	0.90
H/P 24 - 4" Thick	0.68	1.06	1.12	1.08	1.03	0.98	0.95 (1.05)
H/P 44 - 4" Thick	0.45	0.96	1.15	1.10	1.05	0.97	1.05

All tests performed by Riverbank Acoustical Laboratories, an independent NV LAP accredited acoustical testing facility. The test method conforms with the requirements of the ASTM Standard Test Method for Sound Absorption and Sound Absorption Coefficients by the Reverberation Room Methods: ASTM C423-90a and E705-00.

HOW DOES IT ASSEMBLE?



MOD PANEL ASSEMBLY



INDUSTRIAL APPLICATIONS



Reinforced roof with
Industrial Blower



Industrial Enclosure
with Heavy Duty Doors



Assembly Rooms with
standard Double Leaf
Doors



Dyno Test Room



Clean Room

APPLICATIONS

- Machinery Enclosures
- Test Cells
- Printing Plant Quiet Rooms
- Quality Control Test Areas
- Thermal Spray Rooms
- Coordinate Measuring Machine Rooms
- Factory Offices
- Quiet Rooms-Single or Double Wall
- HVAC Plenums

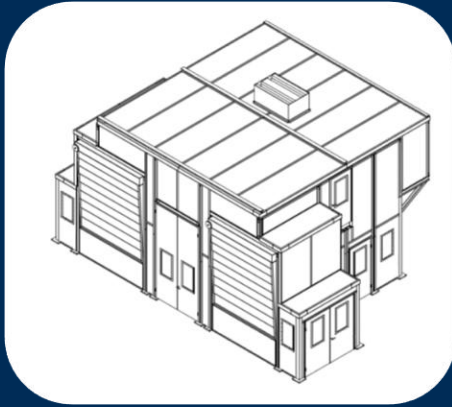


MODULAR SYSTEM:

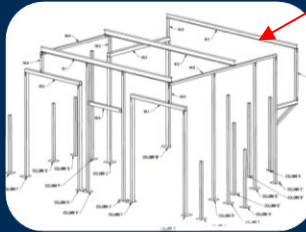
- Can be used as a barrier wall
- Can be used as a two- or three-sided enclosure tied into existing building walls
- Can be used as a four- sided enclosure
- All design configurations available with or without roof
- System flexibility permits angled walls
- Isolated floors are available
- Silenced ventilation systems are designed to meet your specific requirement
- Enclosures can be relocated or reconfigured at a later date
- System flexibility permits angled walls
- Pre-engineered modular system "kit" includes all components necessary to complete your noise control solution
- All materials are non-combustible
- Panels and connectors are constructed of A60 "paint- ready" Galvanneal steel
- G90 spangled galvanized construction is available
- Prime painting or finish polyester powder coat paint available in a wide selection of colors

Case Study: MODULAR PANEL SYSTEMS

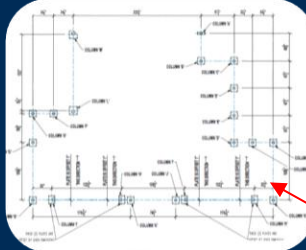
24' H X 32' W X 24' L ENCLOSURE



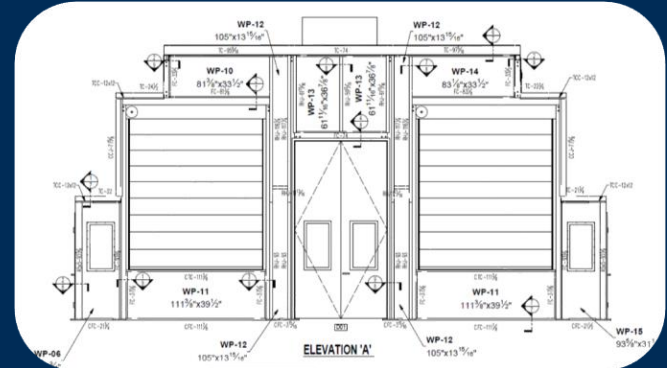
Custom submittal
drawings (2-3 weeks)



Steel Support
Structure



Mounting Plates



Mod Panel Sizes
are specified

Includes: Assembly
Drawings

THANK YOU
FOR YOUR
TIME TODAY.



Please reach out if you
have any questions.

sales@memtechacoustics.com

(248)289-1123

www.memtechacoustics.com