

# SNOWSOUND

## TEXTILE FINISHES



**OFFICIAL DISTRIBUTOR:**

Memtech Acoustics

2175 Avon Industrial Drive

Rochester Hills, MI 48309

(248) 289-1123

[sales@memtechacoustics.com](mailto:sales@memtechacoustics.com)

[www.memtechacoustics.com](http://www.memtechacoustics.com)

# FIBER 2

Light acoustic fabric in solid color with Millerighe striped piquet-type weave. This fabric has a direction of laying with stripes in the direction of the weft (horizontal). Piquet Millerighe is the fabric obtained with a weave with small reliefs, in this case a very fine stripe, normally white or light with reliefs of the same color (color on color).

## PERFORMANCE

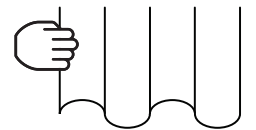
Flame Resistance	Passes NFPA 701 – NFPA 260 – CAL. TB 117 – UL 723 & ASTM E-84 Class A
Environment	100% Recyclable and GREENGUARD GOLD Certified LEED v4 Credits and Certification. Declare Label. LBC Red List Free

## PHYSICAL PROPERTIES

Content	100% Inherently Fire Resistant, Acoustic Sound Absorbing Polyester Fibers with Patented Snowsound Technology
Width	118" // 300 cm
Thickness	0.6 mm



SNOWSOUND



Curtain system (drapery)

Acoustic Fiber Textiles

# FIBER 2R

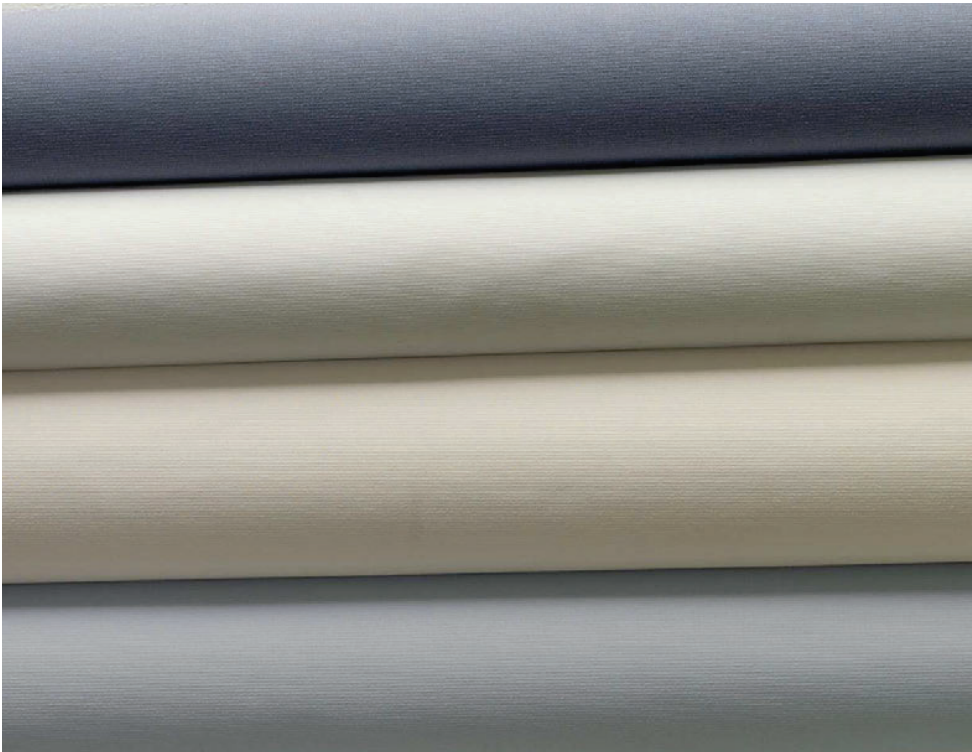
Light acoustic fabric in a solid color with piquet-type Millerighe striped reinforcement, enhanced with thermosetting agents that provide rigidity in one direction (in the direction of the horizontal lines). The “R” designation indicates that this textile is specially designed for roller blinds and roller shades. Millerighe Piquet is the fabric obtained with a weave featuring small reliefs, in this case, a very fine stripe, normally white or light with reliefs of the same color (color on color).

## PERFORMANCE

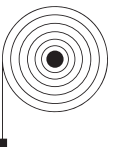
Flame Resistance	Passes NFPA 701 – NFPA 260 – CAL. TB 117 – UL 723 & ASTM E 84 Class A
Environment	100% Recyclable and GREENGUARD GOLD Certified LEED v4 Credits and Certification. Declare Label. LBC Red List Free

## PHYSICAL PROPERTIES

Content	100% Inherently Fire Resistant, Acoustic Sound Absorbing Polyester Fibers with Patented Snowsound Technology
Width	118” // 300 cm
Thickness	0.6 mm



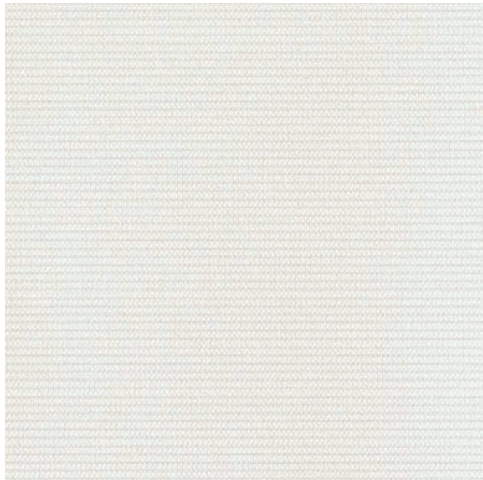
SNOWSOUND



Roller shades

Acoustic Fiber Textiles

# FIBER 2/2R SWATCHES



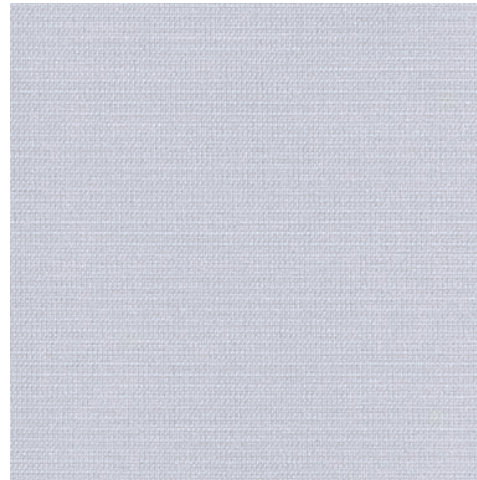
Natural White

200



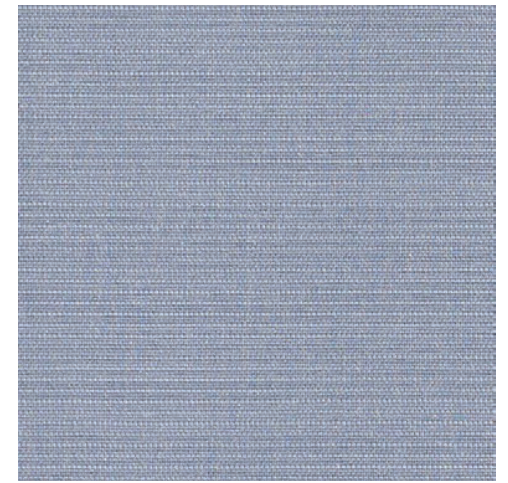
Cream

201



Ice Gray

202



Medium Gray

203

# FIBER 3 MELANGE

Acoustic “wool” finish woven fabric, created from a combination of yarns made up of light and dark fibers, then dyed in pieces to impart a tweed effect to the collection. The fabric does not have a precise direction, allowing for versatile shaping and cutting according to different shapes. Melange-Tweed is the fabric obtained with a weave created by a set of yarns of different colors, whose fibers have been mixed before spinning to achieve a melted, intertwined, and shaded effect. “Tweed” defines a particular wool fabric originating from Scotland, known for its softness and warmth.



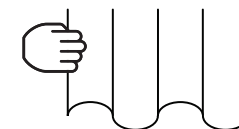
SNOWSOUND

## PERFORMANCE

Flame Resistance	Passes NFPA 701 – NFPA 260 – CAL. TB 117 – UL 723 & ASTM E 84 Class A
Environment	100% Recyclable and GREENGUARD GOLD Certified LEED v4 Credits and Certification. Declare Label. LBC Red List Free

## PHYSICAL PROPERTIES

Content	100% Inherently Fire Resistant, Acoustic Sound Absorbing Polyester Fibers with Patented Snowsound Technology
Width	55" // 140 cm
Thickness	1 mm



Curtain system (drapery)

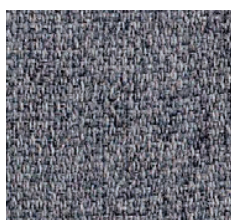
Acoustic Fiber Textiles

# FIBER 3 MELANGE SWATCHES

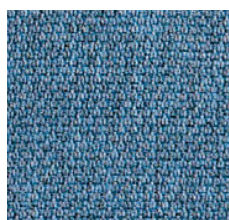
\*Check for availability



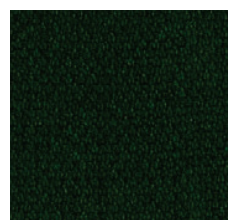
Gray Ice 300



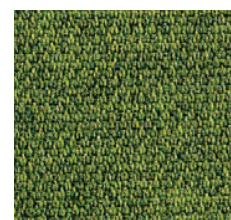
Gray Beige 304



Azure 305



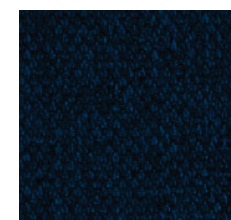
Evergreen 313



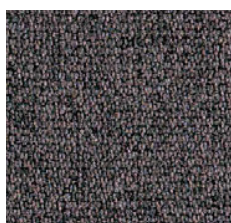
Gray Green 309



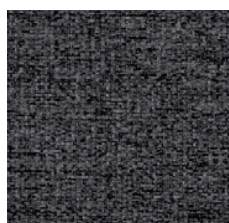
Fiji 315



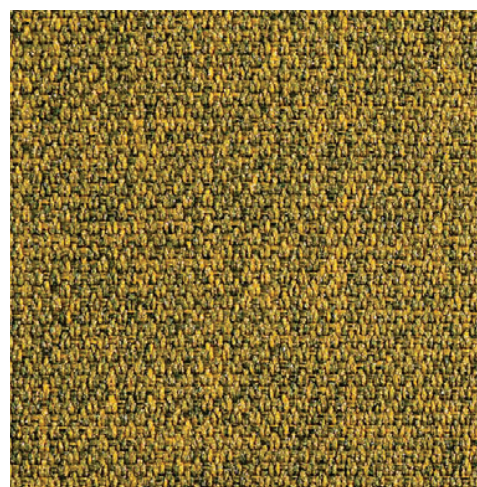
Admiral Blue 314



Gray Taupe 303



Carbon Gray 311



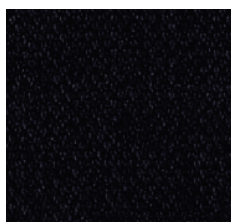
Gray Gold\* 310



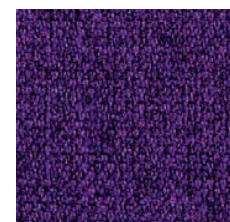
Gray Blue 308



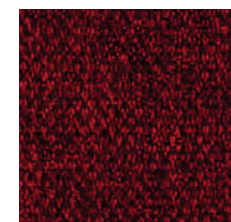
Ivory 316



Anthracite 302

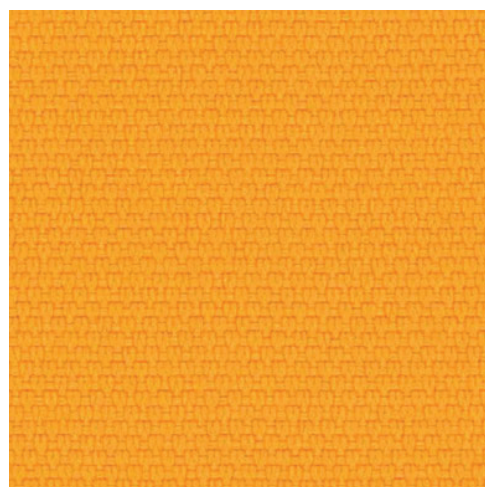


Gray Plum\* 307

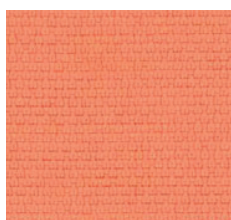


Gray Burgundy\* 306

# FIBER 3 MELANGE SWATCHES



Sun Yellow 317



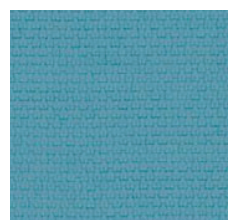
Peach 319



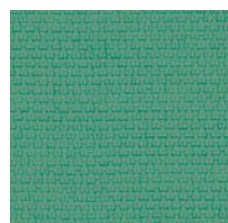
Mars 321



Olive Green 324



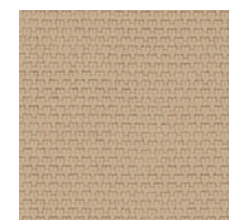
Light Blue 322



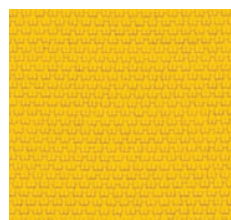
Mint Green 320



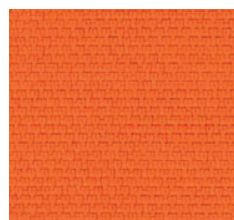
Beige 323



Sand 328



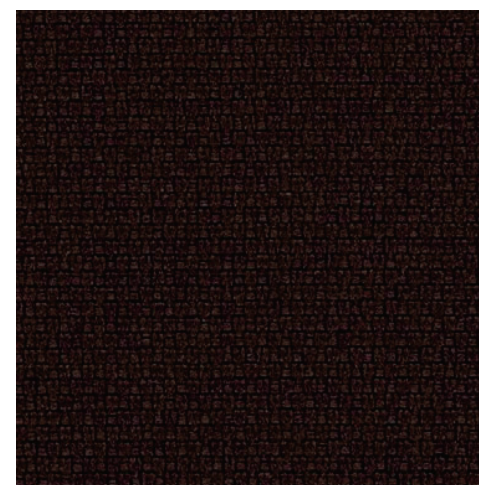
Manila 318



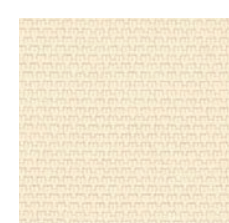
Carrot Orange 326



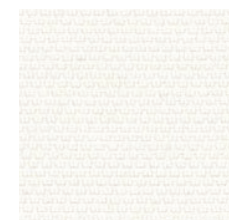
Red 325



Espresso 327



Linen 329



White 330

# FIBER 6 VELVET

A soft and full-bodied acoustic “velvet” finish fabric with chenille yarns that generates a shimmering, non-homogeneous, bright texture with light-dark effects. Usually the laying foresees horizontal shimmering. Veluto-Ciniglia is a fabric that has a surface of dense pile perpendicular to the fabric, smooth, compact and brilliant. Ciniglia is a yarn composed of a twisted thread that holds between its yarn tufts of bulky, upright thread.. The effect is that of velvet (faux velvet), but softer.

## PERFORMANCE

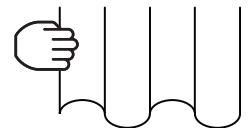
Flame Resistance	Passes NFPA 701 – NFPA 260 – CAL. TB 117 – UL 723 & ASTM E 84 Class A
Environment	100% Recyclable and GREENGUARD GOLD Certified LEED v4 Credits and Certification. Declare Label. LBC Red List Free

## PHYSICAL PROPERTIES

Content	100% Inherently Fire Resistant, Acoustic Sound Absorbing Polyester Fibers with Patented Snowsound Technology
Width	118" //300cm
Thickness	1.7 mm



SNOWSOUND



Curtain system (drapery)

Acoustic Fiber Textiles

# FIBER 6 VELVET SWATCHES



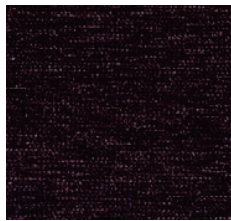
Beige

604



Cream

605



Coffee Brown

601



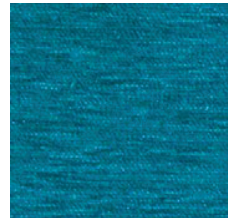
Medium Gray

607



Black

602



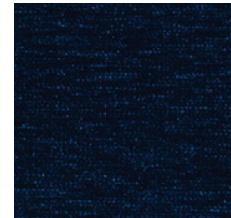
Teal

603



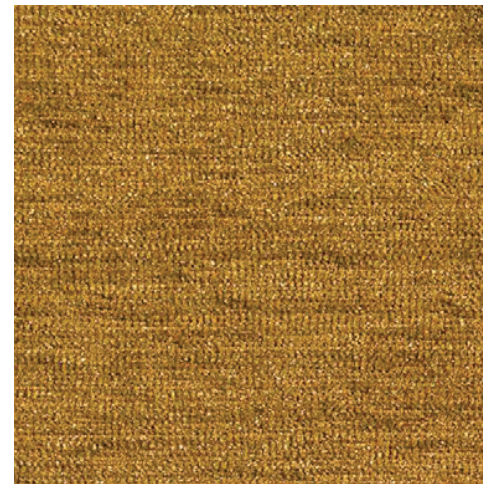
Powder Blue

609



Navy Blue

611



Mustard Gold

610



Red

600



Powder Pink

606



Forest Green

608

# FIBER 7 VELO SHEER



SNOWSOUND

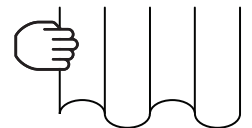
A lightweight and semi-transparent acoustic fabric, boasting a satin and shiny texture. It is characterized by a fine, solid-colored texture with subtle color effects. The 'VELO' (veil) effect seamlessly bridges the visual gap between outdoor and indoor spaces. The fabric features two distinct sides: one more opaque side facing inward and another shiny and reflective side facing the window. This innovative design enhances thermal comfort and promotes energy sustainability.

## PERFORMANCE

Flame Resistance	Passes NFPA 701 – NFPA 260 – CAL. TB 117 – UL 723 & ASTM E84 Class A
Environment	100% Recyclable and GREENGUARD GOLD Certified LEED v4 Credits and Certification. Declare Label. LBC Red List Free

## PHYSICAL PROPERTIES

Content	100% Inherently Fire Resistant, Acoustic Sound Absorbing Polyester Fibers with Patented Snowsound Technology
Width	130" / 330 cm
Thickness	0.3mm

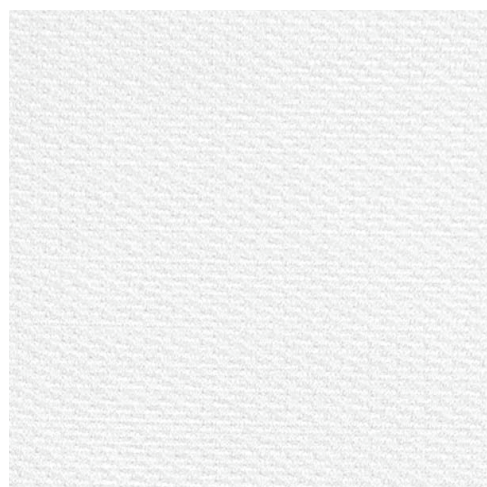


Curtain system (drapery)

Acoustic Fiber Textiles

53

# FIBER 7 VELO SHEER SWATCHES



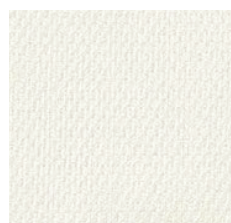
Ghost 700



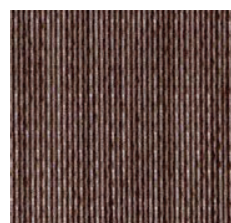
Tan 702



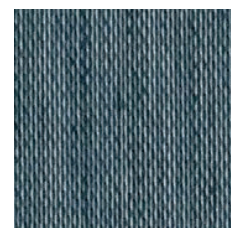
Taupe 701



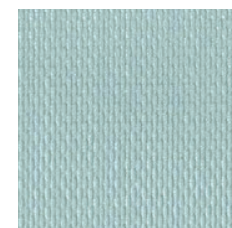
Pearl 704



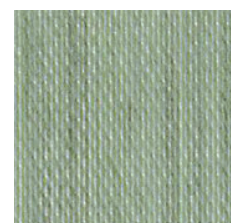
Walnut 705



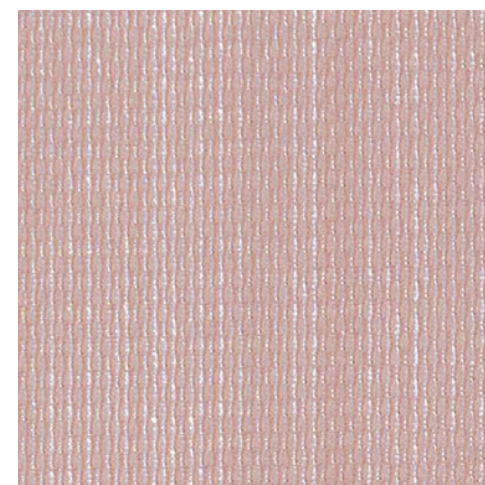
Steel 703



Lagoon 707



Sage 706



Blush 708

# FIBER 8 BOUCLÈ

A double-sided acoustic fabric with two different textures and two different coats: a soft and rich side characterized by the typical “curls” of the bouclè that generate shiny/matte effects, and then you have a more technical, shaved, and less designed side. Fiber 8 is a Jacquard fabric. Bouclè is the fabric obtained from a fancy yarn characterized by knots and small eyelets that generate an irregular fabric surface.

## PERFORMANCE

Flame Resistance	Passes NFPA 701 – NFPA 260 – CAL. TB 117 – UL 723 & ASTM E 84 Class A
Environment	100% Recyclable and GREENGUARD GOLD Certified LEED v4 Credits and Certification. Declare Label. LBC Red List Free

## PHYSICAL PROPERTIES

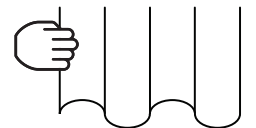
Content	100% Inherently Fire Resistant, Acoustic Sound Absorbing Polyester Fibers with Patented Snowsound Technology
Width	57" // 145 cm
Thickness	1.6 mm



SNOWSOUND

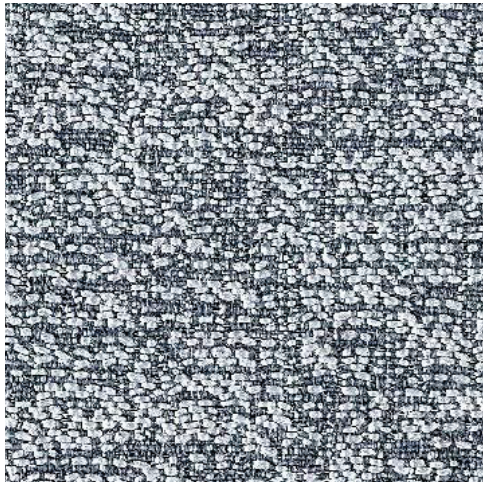


Acoustic Fiber Textiles

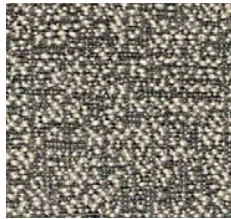


Curtain system (drapery)

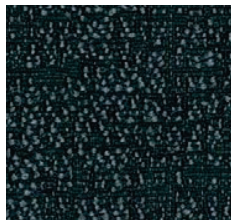
# FIBER 8 BOUCLÈ SWATCHES



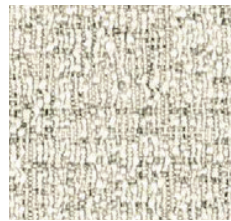
Gray Ice 801



Gray Beige 802



Graphite 803



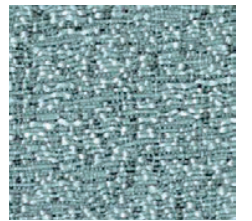
816



Frost 810



Rhino 811



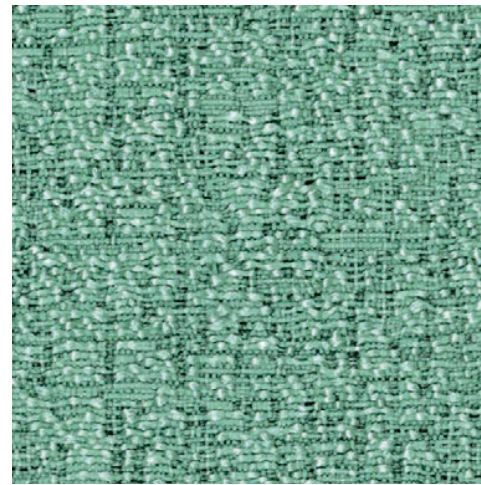
Arctic 814



Dove Coffee 800



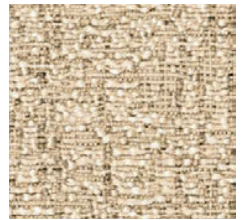
Obsidian 807



Mint 815



Yosemite 813



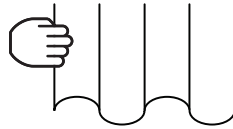
Sahara 812

# FIBER 14 BIOSPHERE

Biosphere is a sound-absorbing fabric born from the fusion of technology and nature. Its acoustic performance is the result of rigorous research, and its nature-inspired appearance is characterized by a range of colors that reflect the plurality and diversity of life on Earth. The materiality of Biosphere appeals to several senses at once. Sight and touch are simultaneously engaged by the balanced color scheme and the complex textures of the fabric, while the special acoustic functions of the while the special acoustic functions of the product are achieved thanks to the integrated Snowsound-Fiber Textile technology.

## PERFORMANCE

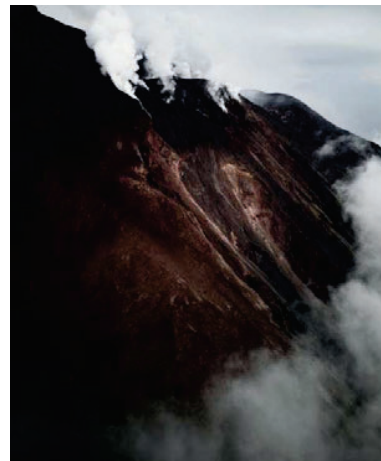
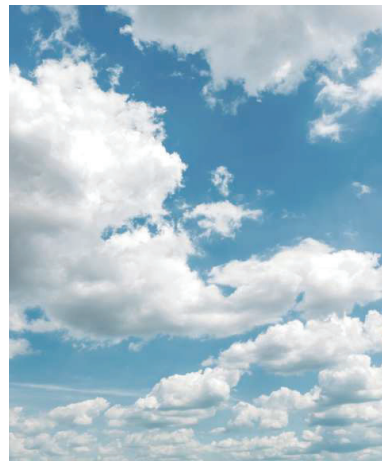
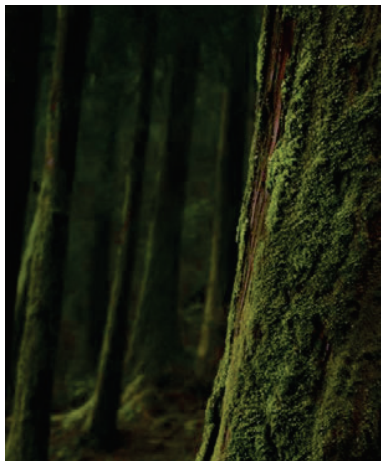
Flame Resistance	Passes NFPA 701 – NFPA 260 – CAL. TB 117 – UL 723 & ASTM E 84 Class A
Environment	100% Recyclable and GREENGUARD GOLD Certified LEED v4 Credits and Certification. Declare Label. LBC Red List Free



Curtain system (drapery)

## PHYSICAL PROPERTIES

Content	100% Inherently Fire Resistant, Acoustic Sound Absorbing Polyester Fibers with Patented Snowsound Technology
Width	55" // 140 cm
Thickness	1.5 mm

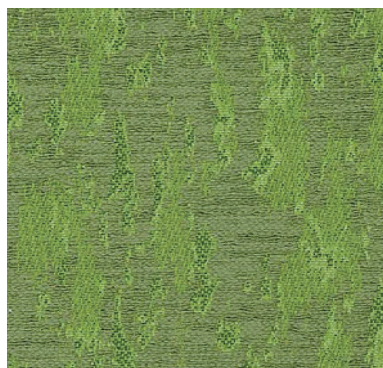


SNOWSOUND

Acoustic Fiber Textiles

# FIBER 14

## BIOSPHERE SWATCHES



Forest

1400



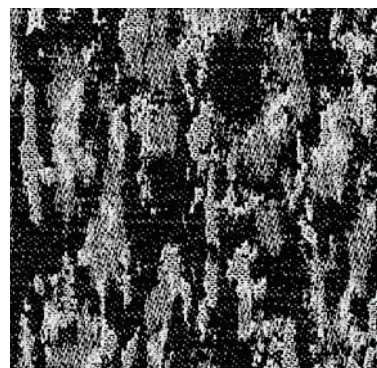
Clouds

1402



Stone

1401



Volcano

1404



Tundra

1405

# FIBER 16 THERMO

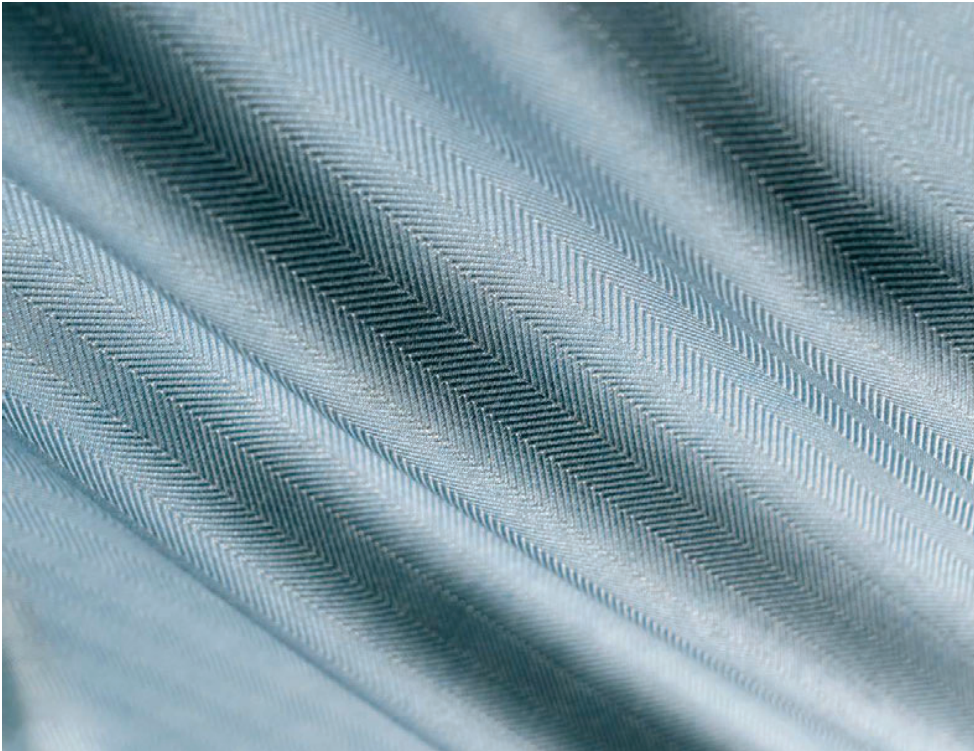
Thermo is a sound-absorbing fabric that helps to keep rooms at the right level of thermal comfort. In summertime, the reflective side facing the sun prevents thermal energy from entering. In wintertime, the side facing inwards limits thermal loss while the reflecting side helps trap the heat inside. A piece of interior design that also saves energy.

## PERFORMANCE

Flame Resistance	Passes NFPA 701 – NFPA 260 – CAL. TB 117 – UL 723 & ASTM E 84 Class A
Environment	100% Recyclable and GREENGUARD GOLD Certified LEED v4 Credits and Certification. Declare Label. LBC Red List Free

## PHYSICAL PROPERTIES

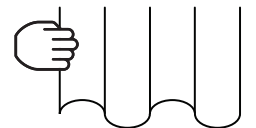
Content	100% Inherently Fire Resistant, Acoustic Sound Absorbing Polyester Fibers with Patented Snowsound Technology
Width	55" // 140 cm
Thickness	0.4mm



SNOWSOUND

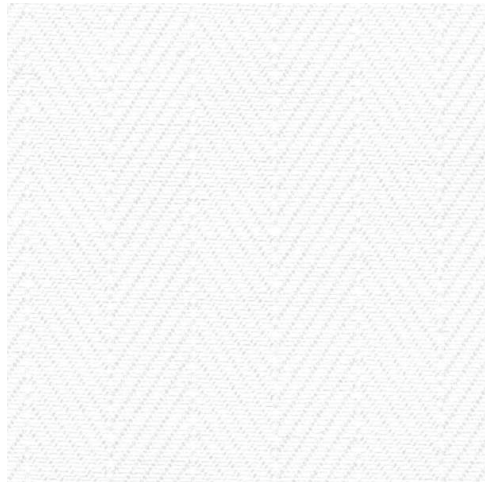


Acoustic Fiber Textiles



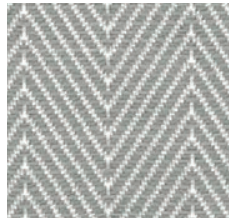
Curtain system (drapery)

# FIBER 16 THERMO SWATCHES



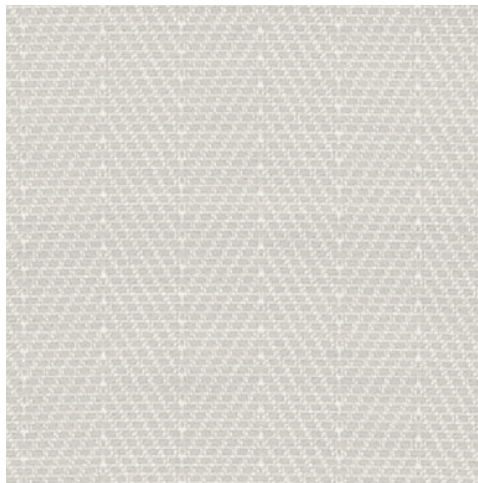
White

1600



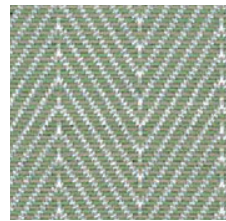
Gray

1603



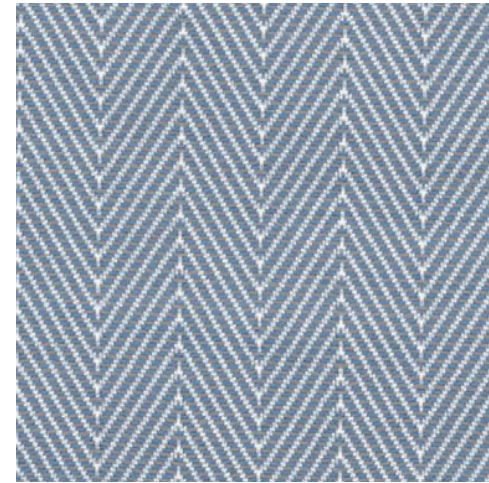
Abalone

1602



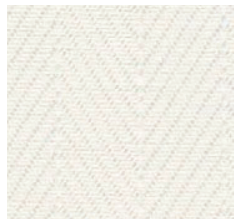
Artichoke

1605



Steel Blue

1604



Pearl

1601

# SNOWSOUND

**OFFICIAL DISTRIBUTOR:**

Memtech Acoustics  
2175 Avon Industrial Drive  
Rochester Hills, MI 48309  
(248) 289-1123  
[sales@memtechacoustics.com](mailto:sales@memtechacoustics.com)  
[www.memtechacoustics.com](http://www.memtechacoustics.com)



©2025 Snowsound USA. All rights reserved.  
Follow us: @snowsoundusa

