



THEATRE
STAGE DOOR



QuietSlide®

POWER SLIDING DOORS



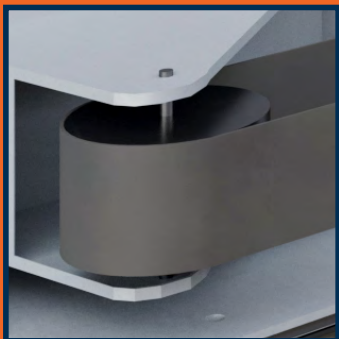
QuietSlide®

APPLICATIONS

- » Stage & Scene Shops
- » TV & Production Studios
- » Machinery Enclosures
- » Mechanical Equipment Rooms
- » Convention Centers
- » Concert Halls
- » Schools
- » Theaters
- » Engine Test Cells
- » Auditoriums

POWER SLIDING DOORS

URETHANE
TRANSMISSION BELT
(LONG OPERATIONAL
LIFE CYCLE)



VARIABLE SPEED
DRIVE SYSTEM



PUSH BUTTON
OPERATION



CHECK OUT
OUR VIDEO HERE!



- Single Sliding or Bi-Parting custom fabricated, steel constructed acoustical sliding door assembly with bottom seal that has a minimum thickness of 5".
- Door assembly incorporates a design that will allow the installation and if required, the re-adjustment of the seal system by means of a 6 way adjustable design. Removal of the door to adjust the seals is not required.
- Acoustic head and jamb seal systems are supplied by the door manufacturer and are independent of the rough opening construction.
- Minimum thickness of the door skins is 12 GA for the interior and 14 GA for the exterior. Skins are seam welded.
- Sliding doors incorporate Linear Guide Rails and Guide Block System, Urethane Power Transmission Belt and drive system and come equipped with an acoustical shroud over the guide belt system.
- Doors accelerate smoothly in either the open or close state to a max velocity of six to eight inches per second and decelerate smoothly to a stop at the completion of an operation.
- All motorized doors are furnished with a minimum of (2) motion sensors (one interior and one exterior).
- All motorized doors are furnished with two (2), (one interior and one exterior) three button operation interfaces.

DOOR OPTIONS

- Single slab or bi-parting options
- Motorized or manual operation
- Six-way adjustable design
- Suitable for interior or exterior use
- Safety motion sensors
- Custom sizes available



ACOUSTICAL PERFORMANCE DATA

1/3 Octave Band Center Frequency, Hz	100	125	160	200	250	315	400	500	630	800	1K	1.25K	1.6K	2K	2.5K	3.15K	4K	5K	STC
QS-SLD 51	36	34	40	43	44	47	47	47	50	50	53	52	52	52	54	57	60	63	51

All tests performed by an independent NVLAP accredited acoustical testing facility. The test method conforms with ASTM Designations E90-09 and E413-87.