



Engine	Yanmar 4NV98CT-NLYS
Gross Power	53.7 kW (72 hp / 73 ps) @ 2,400 rpm
Net Power	51.1 kW (68.5 hp / 69.5 ps) @ 2,400 rpm
Breakout Force	25 kN
Rated Operating Capacity	998 kg
Bucket Capacity	0.4 m ³
Operating Weight	4,200 kg

378C

COMPACT TRACK LOADER

378C SPECIFICATIONS >>>

ENGINE

Emission Regulation	Tier 4f / Stage V
Manufacturer	Yanmar
Model	4NV98CT-NLYS
Gross Power	53.7 kW (72 hp / 73 ps) @ 2,400 rpm
Net Power	51.1 kW (68.5 hp / 69.5 ps) @ 2,400 rpm
Peak Torque	291 N · m @ 1,625 rpm
Number of Cylinders	4
Displacement	3.319 L
Cooling Type	Water

ELECTRICAL SYSTEM

System Voltage	12 V
Alternator Output	85 amps

TRACK & CHASSIS

Track on Ground	1,425 mm
Shoe Width	320 mm
Ground Pressure	40.5 kPa
Track Size	320×86BL×50

HYDRAULIC SYSTEM

System Type	Open
Standard Flow	70 L/min
Traveling Hydrostatic Pressure	35 MPa
Working Hydrostatic Pressure	21 MPa
Hydraulic Cycle Time, total	8.5 s
Raise	4 s
Dump	2 s
Lower (float down)	2.5 s

OPERATING WEIGHT

Operating Weight	4,200 kg
------------------	----------

PERFORMANCE

Static Tipping Load	2,850 kg
Rated Operating Capacity	998 kg
Boom Breakout Force	24 kN
Bucket Breakout Force	25 kN
Dump Clearance at Full Height Discharge	2,580 mm
Dump Reach at Full Height Discharge	882 mm
Maximum Dump Angle at Full Height	39°
Maximum Hinge Pin Height	3,300 mm
Bucket Rollback at Ground Level	30°
Ground Clearance	195 mm
Angle of Departure	25°
Front Clearance Radius with Bucket	2,117 mm

SERVICE CAPACITIES

Fuel Tank	100 L
Engine Oil	9.4 L
Cooling System	20 L
Hydraulic Reservoir	36.4 L
Hydraulic System Total	48.6 L

OPTIONAL ATTACHMENTS

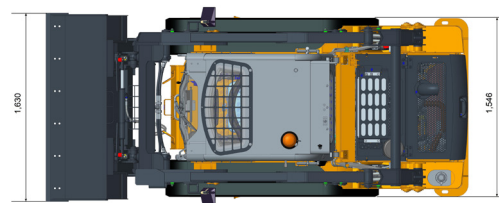
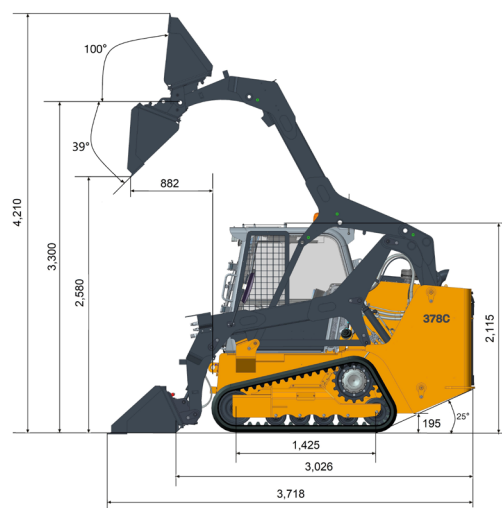
4 in 1 Bucket – 0.4 m³	Auger
Rock Bucket – 0.4 m³	Snow Blade
Scrap Bucket – 350 to 650 mm	Pick - up Sweeper
Hydraulic Hammer	Hydraulic Shear
Fork	Lift Boom

STANDARD EQUIPMENT

General Bucket –0.4 m³
Control Safety Interlock
Boom Interlock
Quick Coupler
Open ROPS/FOPS Cab

OPTIONAL EQUIPMENT

Enclosed ROPS/FOPS Cab with AC
Shoe Width--400 mm
Heater
A/C



Guangxi Liugong Machinery Co., Ltd.

No. 1 Liutai Road, Liuzhou, Guangxi 545007, PR China
 T: +86 772 3886124 E: overseas@liugong.com
 www.liugong.com

Specifications and designs are subject to change without notice. Machines shown may include optional equipment. Liugong standard and optional equipment may vary from region to region. Please consult your Liugong dealer for information specific to your area. Engine power kW is converted to horsepower (1 kW=1.3596 ps and 1 kW=1.3410 hp) in this file.

05/2023 Designed by LiuGong