



## StreetBond® Care, Maintenance and Repair Guide



StreetBond® coatings protect asphalt from aging and weathering providing a sustainable, renewable surface. Therefore, caring for the project will not only preserve the look of the project, but also preserve its overall lifespan.

## KEEP THE SURFACE CLEAN

**Dirt, Sand and Gravel:** If dirt sand or gravel is present at the interface between vehicle tires and the coated asphalt surface, a grinding action will occur. This will result in premature wear of the coating and can chip the impressed pattern in the asphalt.

**Oil Stains:** Mild oil leaks do not damage the coated surface other than being unsightly. To remove these, use a mild degreaser or detergent such as United Cleaning Concentrate or Simple Green-All Purpose Cleaner.

**Leaves:** In certain climates, some types of leaves can stain the StreetBond® coated surface. Light colored leaves tend to show stains more readily than darker ones. In areas where leaf staining is a problem, regular leaf cleaning is recommended.

**Chewing Gum:** Removal of chewing gum from asphalt surfaces is difficult. Try freezing the gum, using ice, then chip off the gum with a small paint scraper. Be careful not to damage the StreetBond® coating.



**NOTE:** Pressure washing StreetBond® surfaces is acceptable, but caution should be used when using extremely high pressure commercial pressure washers to clean StreetBond® surfaces.

These extremely powerful water jets can cause the asphalt to delaminate below the StreetBond® coating. GAF recommends 2000psi or less when directly cleaning the surface.

Alternatively, you can use road sweeper vehicles that are equipped with rotating brushes and water sprayer/jet nozzles to remove dirt from the surface. Rotating brushes should be of nylon bristles as steel bristles will cause damage and premature wearing of the coating.

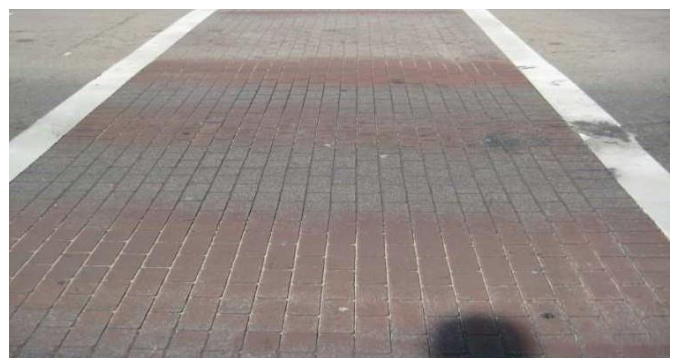
## RECOATING

StreetBond® provides a sustainable, renewable surface. Generally, the only maintenance required is recoating the surface. There will likely be areas that experience focused wear, for example in area for turning traffic.

StreetBond® projects can be recoated at any time to make an old project look brand new. When doing maintenance, apply more of the coating to the areas that experienced more focused wear. This will allow for a longer, more cost effective maintenance cycles, as you have targeted the areas that need more product compared to area that receive less traffic.

Recoating a worn area requires the same climate conditions and installation methods as a new application; please consult the “Recommended Application Procedure Guide” for your specific StreetBond® product.

If the original stamped impression have worn away, re-stamping will also be required, before recoating.



***Please contact your local Applicator to receive a quote on repairing and recoating your existing project. If you require assistance locating an Applicator feel free to contact us.***

Though StreetBond® is a highly durable and long lasting product, it is subject to the quality of the asphalt that it is applied on and situations will eventually arise that require asphalt repair. The following key factors should always be considered when doing an asphalt repair to optimize the final look.

## 1. ASPHALT REMOVAL

For repairs that require asphalt removal, always use a saw to make cuts within the grout lines if possible, as cuts outside of the grout lines may be visible when the project is finished.

## 2. DIGGING BELOW ASPHALT

If repair involves digging below the removed asphalt, always replace any base material that was removed and ensure proper compaction to avoid uneven settlement of new asphalt.

## 3. ASPHALT REPLACEMENT

When replacing removed asphalt, ensure the new asphalt is properly compacted using a roller or plate compactor so it sits flush with the existing asphalt.



***Please contact your local Applicator to receive a quote on repairing and recoating your existing project. If you require assistance locating an Applicator feel free to contact us.***