

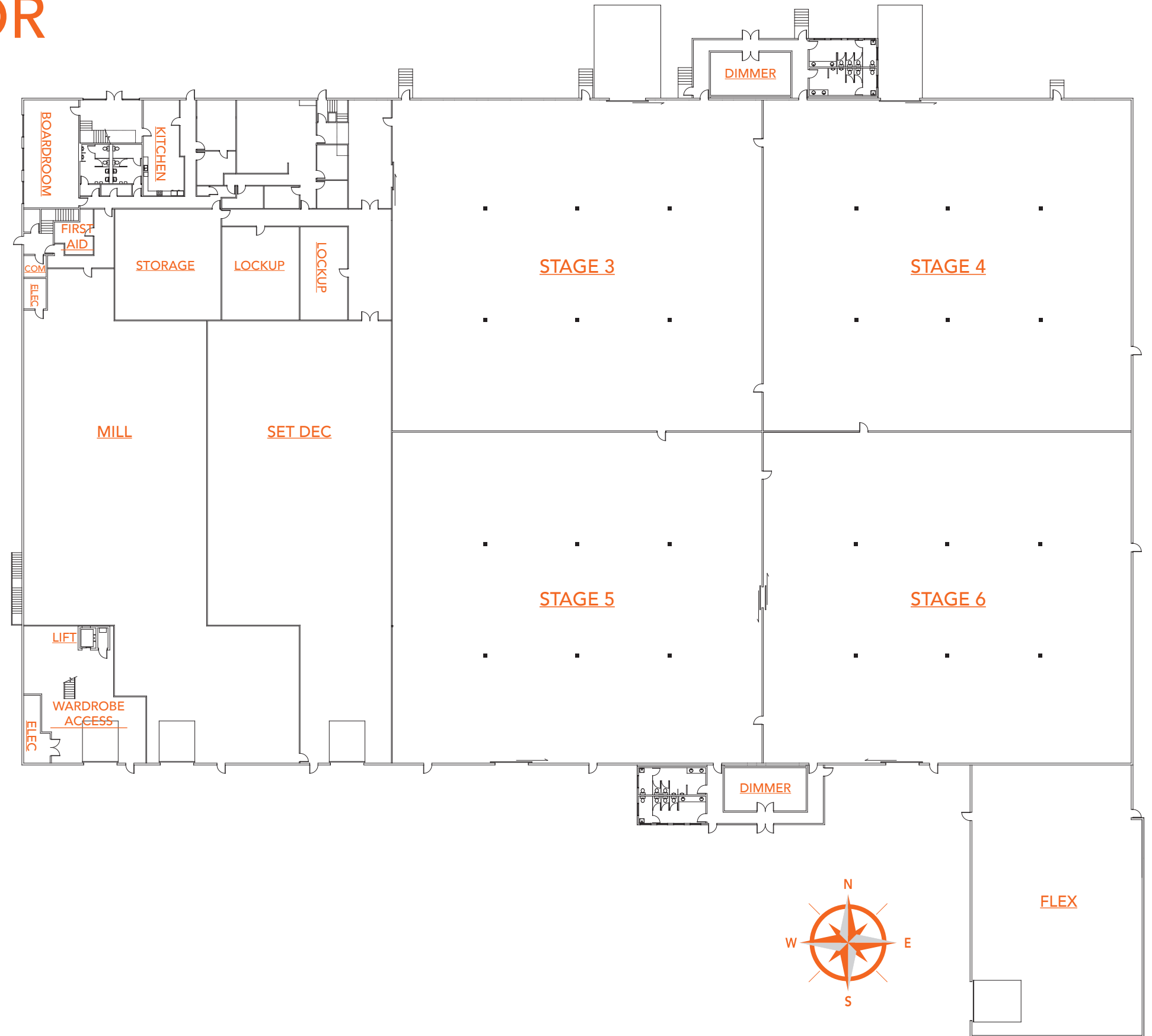
# STUDIO B – FIRST FLOOR

Studio Address: 9380 198 Street Langley, BC

## Property Features

- ▶ Four individually soundproofed stages
- ▶ Each stage measures 132' x 117' (total of 62,400 square feet)
- ▶ Dolly and cart access between all stages
- ▶ 24 feet to truss
- ▶ Stage 5 and 6 connected by a 8' wide x 12.5' high elephant door
- ▶ 400 Amp Cam Panels, 2 per Stage
- ▶ Dimmer Rooms
- ▶ Air Conditioned Stages and Offices
- ▶ Paint booth in mill space
- ▶ Paved parking lot for crew parking, catering and crew tents

*This drawing is provided solely for illustrative purposes and does not represent precise dimensions or scales. All measurements and dimensions depicted should be confirmed independently before use. This drawing is not to be scaled and serves only as a visual aid. Any reliance on this drawing for precise measurements is at the viewer's own risk.*



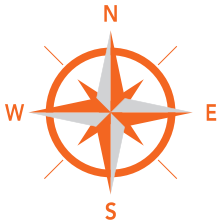
# STUDIO B – SECOND FLOOR

Studio Address: 9380 198 Street Langley, BC

## Office Features

- ▶ Premium furnished offices — 14,460 sq. ft.
- ▶ Private and Executive Offices
- ▶ Open Office Areas
- ▶ Large Boardroom
- ▶ Kitchen/Break Room
- ▶ Photocopy Room
- ▶ Air Conditioned and Heated Throughout
- ▶ Wardrobe for Studio A & B

*This drawing is provided solely for illustrative purposes and does not represent precise dimensions or scales. All measurements and dimensions depicted should be confirmed independently before use. This drawing is not to be scaled and serves only as a visual aid. Any reliance on this drawing for precise measurements is at the viewer's own risk.*



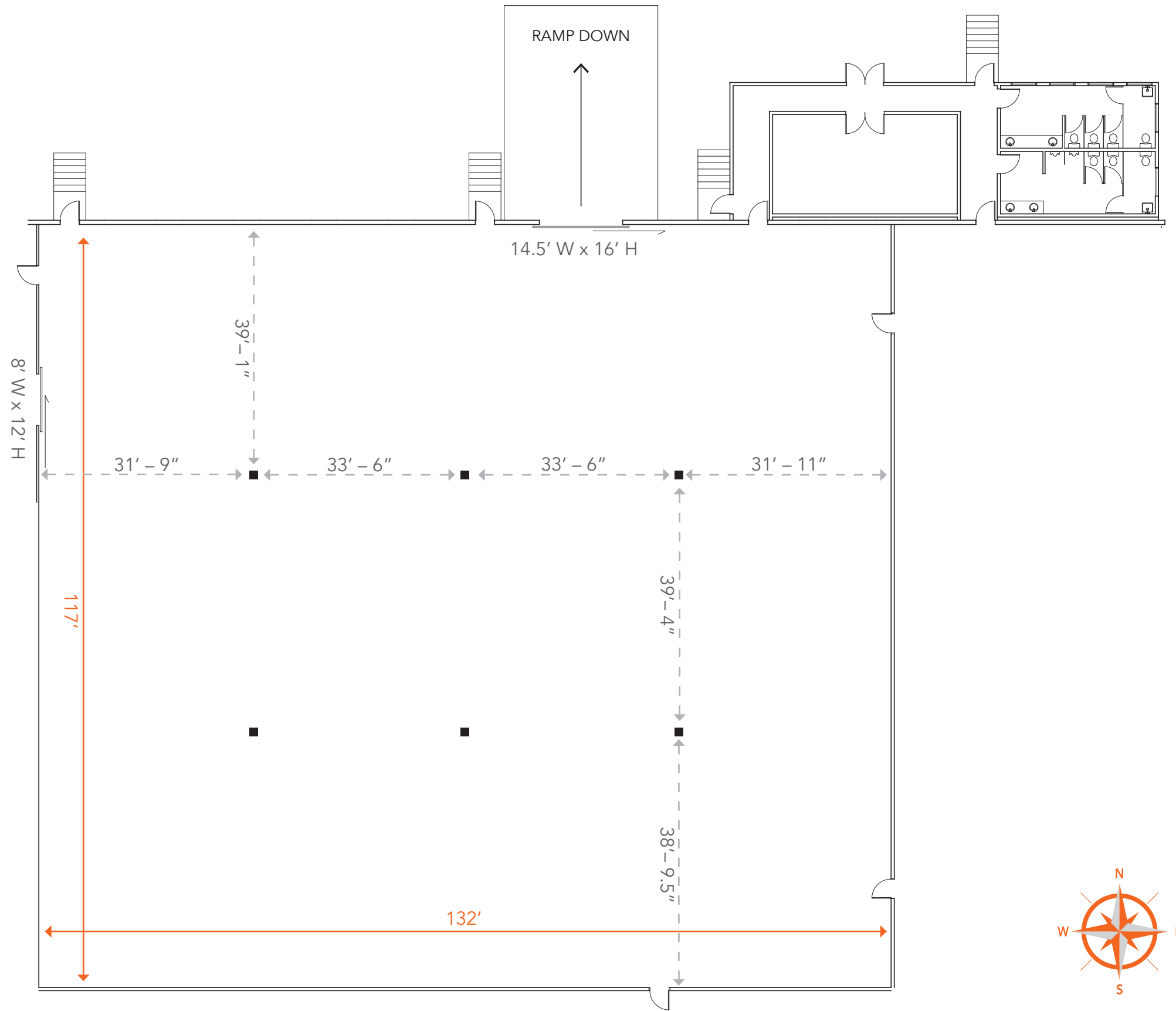
# STUDIO B – STAGE 3

Studio Address: 9380 198 Street Langley, BC

## Stage 3 Features

- ▶ Air Conditioning, Heating and Ventilation
- ▶ Connected to 14,460 sq. ft. of premium furnished offices
- ▶ 2 x 400 Amp Camlock Panels
- ▶ 15,600 sq. ft. | 132 ft. x 117 ft.
- ▶ Acoustical insulation throughout
- ▶ Grade level loading door 14.5' W x 16' H
- ▶ 8' W x 12.5' H elephant door to Set Dec and Lockup
- ▶ Interior passages to stage 4 and 5

*This drawing is provided solely for illustrative purposes and does not represent precise dimensions or scales. All measurements and dimensions depicted should be confirmed independently before use. This drawing is not to be scaled and serves only as a visual aid. Any reliance on this drawing for precise measurements is at the viewer's own risk.*



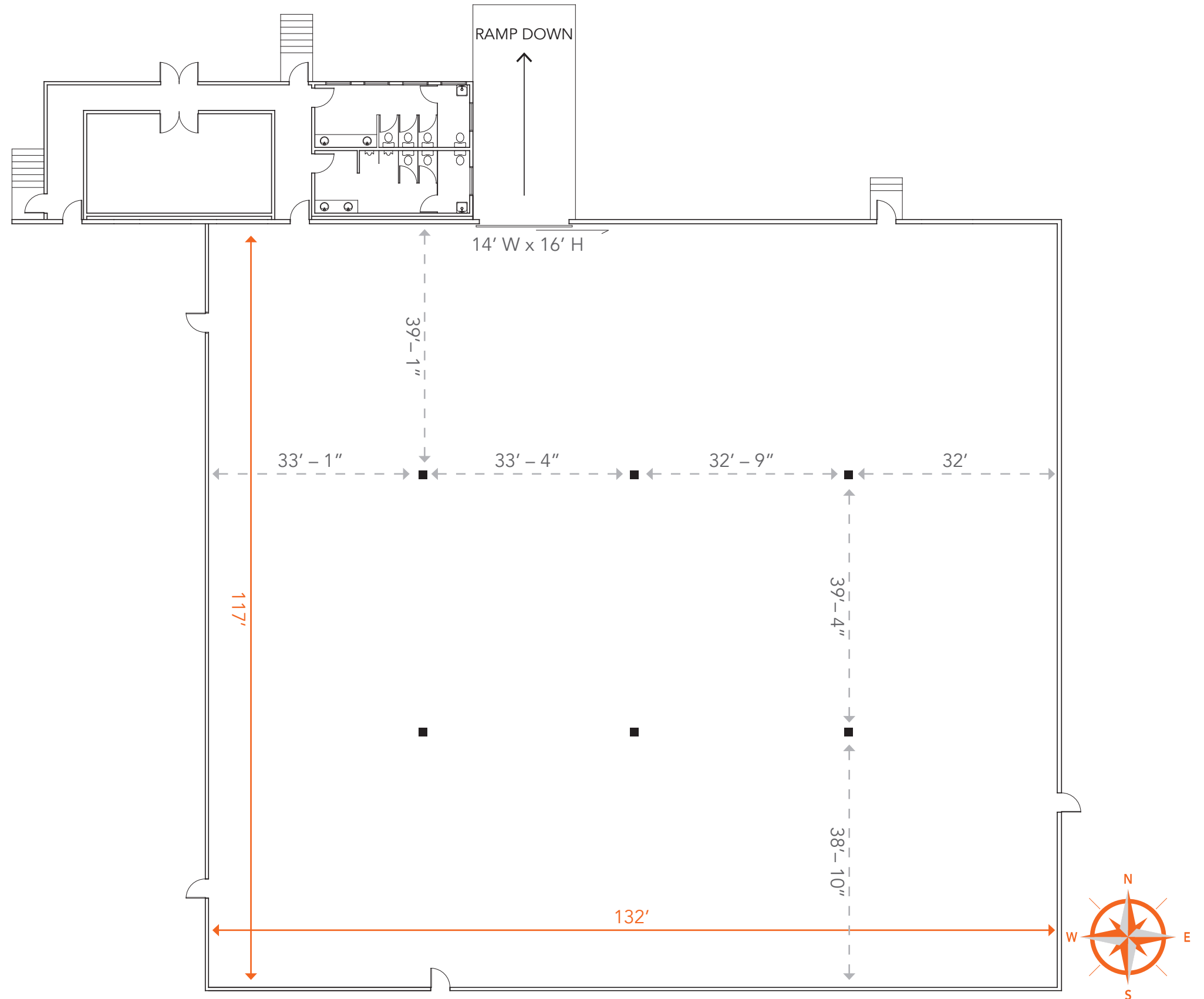
# STUDIO B – STAGE 4

Studio Address: 9380 198 Street Langley, BC

## Stage 4 Features

- ▶ Air Conditioning, Heating and Ventilation
- ▶ Connected to 14,460 sq. ft. of premium furnished offices
- ▶ 2 x 400 Amp Camlock Panels
- ▶ 15,600 sq. ft. | 132 ft. x 117 ft.
- ▶ Acoustical insulation throughout
- ▶ Grade level loading door 14' W x 16' H
- ▶ Interior passages to stage 3 and 6

*This drawing is provided solely for illustrative purposes and does not represent precise dimensions or scales. All measurements and dimensions depicted should be confirmed independently before use. This drawing is not to be scaled and serves only as a visual aid. Any reliance on this drawing for precise measurements is at the viewer's own risk.*



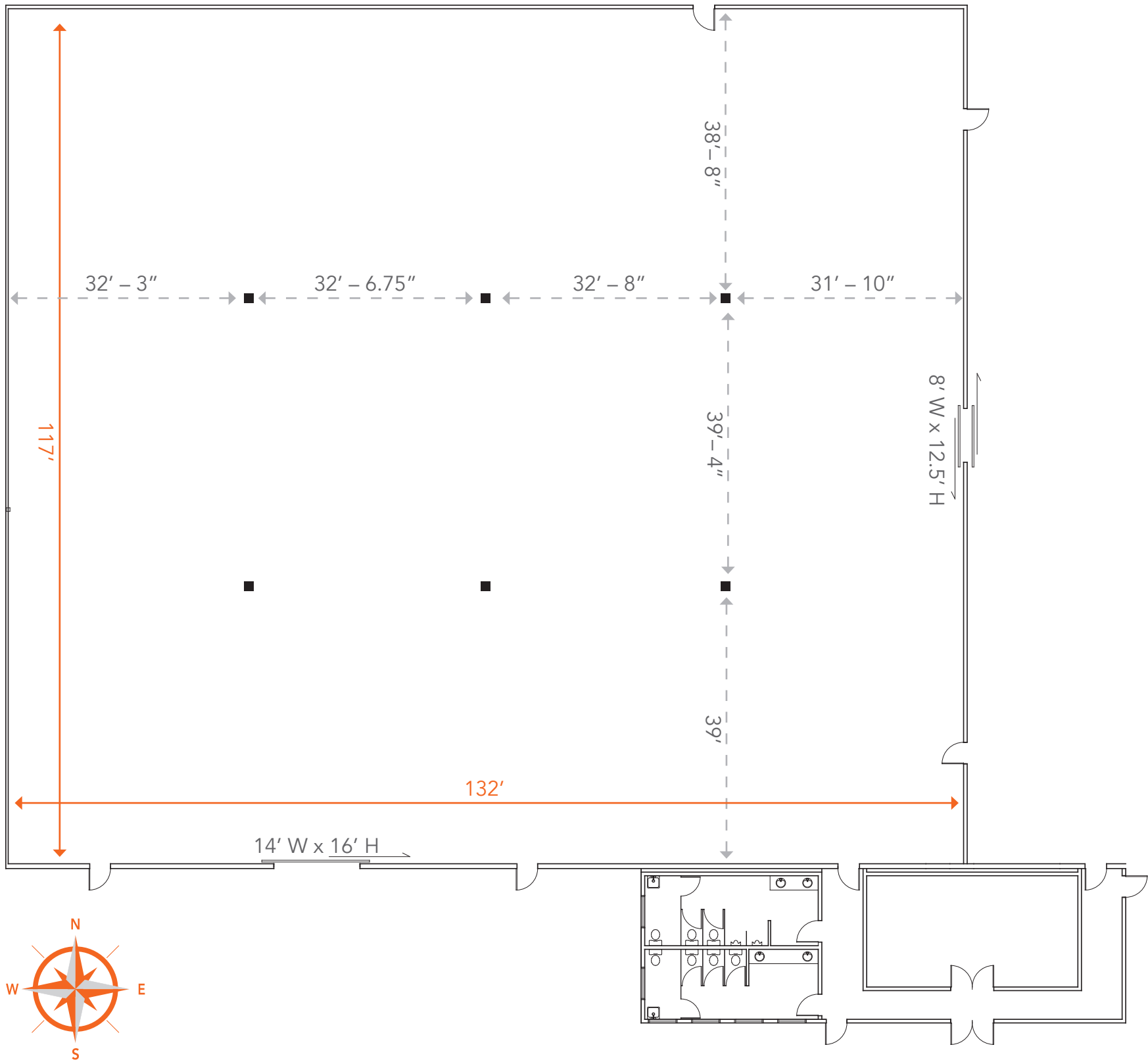
# STUDIO B – STAGE 5

Studio Address: 9380 198 Street Langley, BC

## Stage 5 Features

- ▶ Air Conditioning, Heating and Ventilation
- ▶ Connected to 14,460 square feet of premium furnished offices
- ▶ 2 x 400 Amp Camlock Panels
- ▶ 15,600 sq. ft. | 132 ft. x 117 ft.
- ▶ Acoustical insulation throughout
- ▶ Grade level loading door 14' W x 16' H
- ▶ 8' W x 12.5' H elephant door between stages 5 and 6
- ▶ Interior passages to stage 3 and 6

*This drawing is provided solely for illustrative purposes and does not represent precise dimensions or scales. All measurements and dimensions depicted should be confirmed independently before use. This drawing is not to be scaled and serves only as a visual aid. Any reliance on this drawing for precise measurements is at the viewer's own risk.*



# STUDIO B – STAGE 6

Studio Address: 9380 198 Street Langley, BC

## Stage 6 Features

- ▶ Air Conditioning, Heating and Ventilation
- ▶ Connected to 14,460 square feet of premium furnished offices
- ▶ 2 x 400 Amp Camlock Panels
- ▶ 15,600 sq. ft. | 132 ft. x 117 ft.
- ▶ Acoustical insulation throughout
- ▶ Grade level loading door 14' W x 16' H
- ▶ 8' W x 12.5' H elephant door between stages 5 and 6
- ▶ Interior passages to stage 4 and 5

*This drawing is provided solely for illustrative purposes and does not represent precise dimensions or scales. All measurements and dimensions depicted should be confirmed independently before use. This drawing is not to be scaled and serves only as a visual aid. Any reliance on this drawing for precise measurements is at the viewer's own risk.*

