

Ngā Kohinga

o Ngāti Porou

SUBSCRIBERS ONLY

August 2010 Issue 36

Ko te Kai a te Rangatira ko te Reo Maori



Ruihana Paenga - One of our many winners of prize giveaways for Maori Language Week

'Te Mahi Kai' – 'The Language of Food' was the theme of Maori language week this year and with the help of sponsors Te Wananga o Aotearoa, Te Taura Whiri i te Reo Maori and Huia Publishers Radio Ngati Porou was able to give listeners a helping hand in learning Te Reo Maori.

Radio Ngati Porou has a commitment to Te Reo Maori 365 days of the year but as always makes extra effort to support the week long event. This year we offered prize giveaways of Reo learning resources and competitions which encouraged the use of Te Reo Maori at home and in the community.

In line with the theme for 2010 we produced segments on the traditional growing methods of our tipuna and the relevance of those methods today. Tahito McClutchie was our garden specialist who gave helpful hints on how to get the best from your garden and how to use the signs of Matariki and the maramataka to achieve better crops. Tahito took time to reminisce how the old people would tend to their gardens from karakia whakato (planting rituals and prayers) to the festivities of the harvest.

In the Drive show we profiled Ngati Porou people who have achieved success in their careers utilizing Te Reo Maori as an integral part of their chosen vocation. Lawyer Te Raumawhiti Kupenga said "If

it wasn't for Te Reo Maori I would not have had the edge over my counterparts. It was something that made me unique amongst my colleagues". His wife, former 'Mai time' host Fiona Apanui learned the basics of Te Reo Maori while working on the show. "I was whakama because my Spanish was better than my Maori. That was what made me passionate about learning my own Reo," she said.

'Te Kete Korero' featured a segment on Whakatauaki, highlighting key proverbs which are used often but are not necessarily understood fully. Translations and interpretations were provided.

We also ran numerous competitions on air to encourage learners of Te Reo Maori to take part by offering prizes like dictionaries and puzzle books. Huia Publishers, long time supporters of RNP's on air initiatives provided story books to encourage winners to take the first steps towards learning Te Reo Maori.

Listeners both young and old took part in what was a great week of learning Te Reo Maori. We thank everyone who participated in the shows, and those who contributed giveaways. We look forward growing Te Reo ake o Ngati Porou through our broadcast schedule.



Te Runanga o Ngati Porou

EDITORIAL

E te Wiwi Naati, tena tatou. Tena tatou i o tatou tini aitua. Ko ratou te hunga mate kia ratou, ko tatou te hunga ora kia tatou, no reira tena tatou katoa.

Tena tatou i a Papa Te Kapunga Matemoana 'Koro' Dewes i mate i te rangi nei. He toa o te reo ake o Ngati Porou, he pou tautoko ano hoki o te Reo Irirangi o Ngati Porou. Radio Ngati Porou staff in particular will miss Uncle Koro, who would have been, one of the staunchest listeners of Radio Ngati Porou. Uncle Koro was our Quality Assurance Officer. He'd call if he didn't like the words or phrases we used but would always offer an alternative Ngati Porou word, or he'd get quite specific and give us a Horoera word or a Rangitukia word. He was a fountain of knowledge and always willing to impart his matauranga Ngati Porou on anyone willing to listen and learn.

Nga Kohinga is another way matauranga Ngati Porou can be transferred to Ngati Porou and we are pleased to release another issue of Nga Kohinga o Ngati Porou, jam packed with news from Ngati Porou organisations.

Maori Language Week has come and gone, so Radio Ngati Porou's efforts to promote the theme for the week 'Te Mahi Kai', is lead story for this issue. Promoting our language and culture is our core business, whether it's here or abroad. And that's exactly what Darylene Rogers has been doing. She's just returned from two months of performing at the NZ Expo in Shanghai, China, with Te Kapa Haka o Te Whanau a Apanui.

A slight difference from the trip Whanui Forest's Acting GM Tina Porou made to Japan in April as part of young NZ professionals delegation to develop stronger relationships in agribusiness with Japan. You can read all about her trip in this issue, and we get to meet Whanui Forests' Forestry Manager John Kopua.

Mark Ngata has an insightful article about what Ngati Porou Seafoods does, how it services Ngati Porou and what products they sell to the public. Besides selling some of the best fish and chips in Gisborne, Off the Hook, NPSG's seafood shop sells \$3 bags of fish heads and the best kina punnets in the country.

Prospecting Permits, Marae Insurance and what we can expect at this year's Hui Taurima and Ngata Lectures get covered by Monty Soutar, CEO of Te Runanga o Ngati Porou.

Ngati Porou Hauora continue to do great work at grassroots level and promote programmes and research to make us healthier and live longer.

On 27 August Radio Ngati Porou will run its Annual Daffodil Dedication Day to raise money for the Gisborne/ East Coast Cancer Society. Cancer is one of the biggest killers of Maori and we'll be aiming to beat last year's total of \$1500. If you can sing, this is your chance to shine!! We run a live singing request show, where listeners can request a song from local song birds, personalities, pakeke, even kaimahi! No reira tautokohia mai te kaupapa nei!

Look out for us during Radio Ngati Porou Birthday Week which kicks off from Hicks Bay on Monday 30 August 2010! We're hitting the road again to celebrate our 23rd Birthday in communities up and down the Coast. Listen out for the details of when we're in your neck of the woods so you can come down and join us for a korero on air!

Erana Keelan Reedy

17 August 2010

BRINGING PEOPLE TOGETHER

It's almost that time of the year – Radio Ngati Porou Birthday Week, the last week of August – and this year we're going to be celebrating our birthday for a whole week, up and down the Coast, starting off in Hicks Bay and ending in Kaiti! Mai i Potikirua ki te Toka a Taiau – Radio Ngati Porou is still bringing people together – 23 years later! And we're going to be around for a few more years yet!

We'll bring the station to your community for the morning, so keep tuned to find out where and when. It's a chance for you to celebrate this milestone with us and an opportunity for us to find out what is happening in your community.

In October, Radio Ngati Porou will hold its Annual General Meeting. As well as receiving RNP's Audited Reports for 2009/10, 2008/9 and 2007/8 we'll be reviewing RNP's Trust Deed, primarily how the Board is represented. The Deed allows for 8 community or rohe representatives and 4 appointed Te Runanga o Ngati Porou representatives. Information about the review of the Trust Deed will be made available to the public – listen to Radio Ngati Porou for details about where you can pick up this information in your community.

From Rangitukia to Shanghai by Darylene Rogers

Darylene Rogers has recently returned from two months in Shanghai performing at the NZ Expo pavilion as part of Te ropu kapa haka o Te Whanau a Apanui.

Spending two months in China was one of the most exciting times of my life.

Before I left to attend the World Trade Expo in Shanghai I had reservations about the food, the language barrier, the smog and the fact that I would be 6700 miles away from my paradise, Rangitukia. But all those fears soon disappeared, after one day in Shanghai, I realised I would grow to love the place.

We landed in Shanghai in the early morning and were greeted by a yellow-grey mist that smelled like smoke and sewerage combined and it was so different to the clean air of Rangitukia. I never thought I'd get used to it, but I did.



Above: Te Kapa Haka o Te Whanau a Apanui perform on the NZ pavilion stage

Left: The view from the 24th floor of our apartment building, Huangpu Shanghai



I was lucky to be able to travel to Shanghai as part of Te Kapa Haka o Te Whanau a Apanui to represent Aotearoa at the NZ Pavilion at the World Trade Expo. We stayed in apartments on the 24th floor of a building in the heart of the Huangpu district known for its food and shopping. We would travel from there to the Expo site approximately half an hour away and begin our daily routine of four full kapa haka performances, six days a week.

The Expo attracted an average of 400,000 people per day. We performed to thousands who would mill around the stage edge in awe of what I'm sure would have been their first encounter with Maori culture. Their responses varied from amazement to embarrassment at the sight of half naked men on the stage.

The Chinese people are very conservative and despite this we had no problem getting a stage full of men to take off their shirts and attempt the haka and pukana in an effort to emulate the warriors of the group.

Our aim was to give the Chinese people a taste of Maori culture with an Apanui

flavour. Testament to our achievement of this could be seen in the thousands of photographs taken by the pavilion guests. It was an overwhelming experience that we soon became accustomed to. Even out of costume we were approached by people for photographs because we were so different to anything they had seen before.

With a population of roughly 20 million Shanghai is a hive of activity, it appears that there are no road rules when you first take to the streets. But their system of "filtering" traffic seems to work fine for them. Its almost a 'first in-first served' system where you can take a spot at will. The smallest on the road has the right of way except for when you are opposing a bus and pathways seem to be for show as the majority of people tend to walk on the road. That took some getting used to.



Chinese spectators take up the opportunity to give the haka a go

Continues page 4...

From Rangitukia to Shanghai continued...

The stereotype that Chinese people can't drive was completely dispelled as we witnessed daily their ability to navigate one of the most difficult and complex roadways in the world.

The food was one of my biggest fears. Visions of rat and dog dishes and food poisoning tainted my view of what became one of the greatest eating experiences I've ever had. By the end of our trip we were eating from roadside carts and steering well clear of the western food on offer. My favourite was the fried rice from a roadside cart vendor. A woman we named "Aunty" would come out just after dark to her regular spot on the street. Her fried rice dish was second to none in taste and in price. It cost just \$1NZ for a dish that would feed two people. We later discovered that roadside cart sales are illegal and often police vans will do circuits to clear the street of illegal vendors. Luckily for us Aunty was never evicted during our orders.

Food was a highlight of the trip and it was equalled only by the shopping. China gives the word 'cheap' a whole new meaning. They work on a bargaining system where if the vendor can get more money out of you, they will but we quickly learned the art of market bargaining in Shanghai.

A great example of how much things actually cost in Shanghai are the shoes. While there, we purchased a pair of 'label' Running shoes for \$30NZ. A month after returning home those same shoes were just coming into the country at a whopping \$300. The sad thing is that we probably still paid too much for them in China.

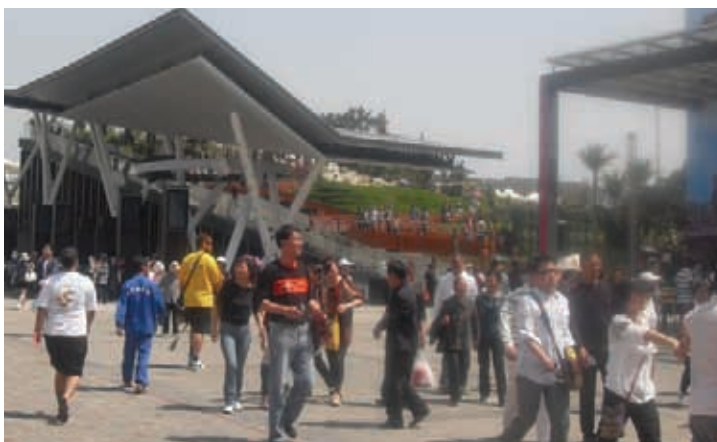
The language barrier was only a barrier to those who were not so good at sign language. This got us by along with what little Mandarin we knew.



Above: 'Aunty' cooks our midnight snack of fried rice from her roadside cart and below kebabs for desert.



Left: Chinese film crew make a documentary on Maori culture and below: NZ pavilion in China



The ability to ask what type of meat was used in a dish and the ability to get directions to the toilet was all we really needed because the Chinese are so friendly and there is always someone willing to help out.

One thing I really missed was the NZ milk. As you can imagine there aren't a lot of cows in China, therefore good quality milk is really hard to source. Other than that and a craving for a fat juicy steak, I was quite at home with life in China.

I have no doubt that I will return one day and next time it will be with only a change of underwear and good walking shoes. My time in Shanghai really changed my view of Chinese people who I believe are one of the most resilient races in the world. Their ability to adapt to situations in an attempt to survive and their mana motuhake in their land will be things that stay with me forever.

The Expo will run until November 2010. At the moment, Te Ropu Kapa Haka o Whangara mai Tawhiti are the performing group in Shanghai and they will be relieved by Te Waka Huia later this month. It is expected that by the end of the Expo over 4 million visitors would have passed through the NZ pavilion. Great promotion for haka, for Maoridom and for New Zealand

Governance of Maori Trusts

Regular Nga Kohinga contributor and lawyer James Johnston gives some tips on how to successfully govern your Maori Trust.

Harry had recently returned to New Zealand with his wife to raise their young family so that they could be closer to his extended whanau. While living overseas he had established a successful cleaning business and was keen to share his business experience with his extended whanau. He put his name forward as a trustee of the whanau farm Maori land trust which had been experiencing problems for years.

The existing trustees had been on the board for many years and a number of them seldom attended meetings. Others had farming but not business experience. The accounts were not up to date, meetings were not being held and the farming operations were run down. There were ongoing problems with the farm manager who was the son of one of the trustees. No dividends had been paid out in living memory and much of the land had reverted to gorse. To make matters worse the bank was threatening to suspend the farming operation's overdraft facility.

Ten years earlier, the trustees had leased the block out as a solution. Unfortunately they had not done their due diligence on the prospective lessee who could not even afford the rental. He also failed to repair the fences and add fertiliser to the land as agreed. If the trustees had carried out due diligence on the lessee they would have discovered that he had an appalling credit rating and negligible farming experience. Instead they were faced with expensive legal action to have the lessee removed from the land.

Although the whanau were unhappy with the situation, they had put up with it for years as the trustees were related and respected kaumatua of their marae.

Under the Trust Deed there was no limit to the term of office for each trustee, which effectively made them life members. In the past they had resisted standing down due to their strong attachment to the land and a desire to turn the situation around. Despite their best intentions the trustees could not see that their remaining on the board was endangering the farming operations.

They had exposed themselves, the farming operations and land itself to significant risk, including a mortgagee sale.

Fortunately Harry's experience in business meant that he was able to come up with a plan. He approached the trustees and offered to help them to turn the farming operations around. His plan was drawn up with the assistance of a respected farm consultant, a good accountant and a lawyer experienced in Maori land and governance issues.

The plan set out the steps required and included changes to the Trust Deed to ensure that there was an appropriate mix of experience on the board and for the retirement and rotation of trustees. A succession plan ensured that new talent could be brought on to the board. Clear rules on conflict of interest included the hiring of staff. Both the bank and the beneficiaries were delighted by the changes. The trustees were also happy that the fortunes of the farming operations had finally been turned around and they were looking forward to positive future operations.



James Johnston

James Johnston is a Partner with Rainey Collins Lawyers. He invites comments and feedback to jjohnston@raineycollins.co.nz or PO Box 689, Wellington, by telephone on 0800 RCW LAW.

For further articles of interest across a wide range of legal subjects please visit www.raineycollins.co.nz.

Rainey Collins is based in Wellington, looking after the needs of private clients, businesses, and a wide range of organisations, across the whole of New Zealand.

RAINEY COLLINS
LAWYERS



Daffodil Dedication Day 2010

Cancer continues to be a leading cause of death for males and females in NZ, accounting for 29.8 percent of all deaths. This is a stark reminder of the impact cancer has on all people despite race, sex or age.

East Coast communities are among the most generous in the country and always seem to come through when a cry for help is heard. In its 20th year the Cancer Society once again calls for the generosity of New Zealanders with the Annual Daffodil Day Appeal (27 August).

Last year Radio Ngati Porou with the kind support of its listeners, raised \$1500 for our local Cancer Society and we're hoping to increase that amount this year.

We will hold our annual 'Daffodil Dedication Day', a mini Radiothon which in essence is a live singing request show. Listeners can call in and request a song from their favorite local singer. We will try our best to get that singer to sing live on air.

We had singers from all over the country taking part live in the studio and via the phone. Bennie Haerewa pledged a donation to hear his grandson Robert Ruha sing a song. Robert sang while driving along the Auckland motorway, using a hands-free kit of course. We had school and Kohanga Reo groups in the studio, all of which had done their own fundraising within their own whanau to add to the 'kete' and a host of local people who gave their time to come into the studio to sing.

With your help we look forward to another successful event which will be held on Daffodil Day (Friday 27th August). We plan to begin the event at 9am running right through to 2pm. We will take pledges from Friday 20th August and ask that all dedications and song requests be received with ample time to allow our staff to prepare and secure the local singers and allow them to get some practice in before the big day.

Pledges can be made by phoning (06) 8648020 or 0800 864858. The minimum pledge amount for requests is \$5.

Daffodil Day 2009 - Bigger and Better in 2010



KIWIBANK: A REMARKABLE STORY OF A NEW KIWI COMPANY

Kiwibank has recently opened a new Business Banking Centre in Gisborne, the latest expansion of a company that now has more than 700,000 customers and more than \$20 billion of loans and deposits.

The Gisborne Business Banking Centre, which is the 20th such centre in New Zealand is part of Kiwibank Business Banking Division, a team focused on providing straight forward and easy to understand banking for Kiwi businesses.

When Kiwibank was launched it set out to make a difference to the New Zealand banking industry. Kiwibank wanted to prove that there was room for a New Zealand-owned bank providing better service, better products, lower fees and better interest rates.

The bank drew from the country's past where historically there had been a bank operating through the Post Office network and it looked to the future by embracing new technology and a new way of dealing with customers.

Kiwibank's ultimate parent company is New Zealand Post Limited, and Kiwibank operates through the Post retail network of more than 300 Post Shops. This network has by far the largest reach of any bank operating in New Zealand, servicing communities where the other banks had closed and providing services that include longer hours and trading on Saturdays and Sundays for many branches.

Kiwibank started with all the basic services: deposit accounts and home loans. As it grew it added credit card facilities, a nationwide ATM network, personal loans, business banking, internet banking, mobile phone bank

services, insurance and wealth management.

The bank is headed by Chairman Rt Hon Jim Bolger, former Prime Minister of New Zealand. The Chief Executive is Sam Knowles, and Kiwibank now employs over 900 people.

The first customers were signed up in early 2002 and the bank has grown at a steady rate of about 2000 new customers a week ever since. The bank now has more than 700,000 customers and has been growing market share steadily at one per cent a year since it began. After eight years, the numbers joining the bank are not slowing, they are increasing, particularly the all important customers who use Kiwibank as their main bank.

At times the bank has been provocative in its marketing campaigns, frequently the bank has been innovative and at all times the bank has concentrated on customer service.

Following demand from existing customers, Kiwibank Business Banking opened for business in early 2005 offering a relationship management service particularly to the SME business sector, whereby all of business customers needs are looked after from end to end by one point of contact.

The result has been continued growth to assisting over 20,000 business customers with their day-to-day transactional banking needs, business lending and investments.

The new Gisborne Business Banking centre is the latest step in this continued growth, specifically in the East Coast region and will be staffed by:



Terry West - Business Manager

Terry has 33 years experience in the banking industry, two years as a business and finance broker, plus two years operating own business in the tourism/accommodation industry. His banking experience covers most areas of retail banking with approximately eight years in business and commercial banking.

Terry is married with two adult daughters and his interests include most sports, travel, food and wine.



Rene Robati - Business Support Specialist

Ko Hikurangi te maunga

Ko Waiapu te awa

Ko Ngati Porou te iwi

Rene has 35 years experience in banking in various roles ranging from part-time teller to Branch Manager. She spent 19 years with the Commonwealth Bank of Australia, Melbourne working in various areas ranging from customer service to home lending and business banking.

Rene's worked at Radio Ngati Porou as an Accounts Manager and for eight months became the interim Manager of the station.

She recently moved home to NZ and is enjoying being home with whanau, especially watching her grandson play rugby.



Ngati Porou Seafoods Group *by Mark Ngata*

What does Ngati Porou Seafoods actually do? That's the number one question I am asked when I tell people I work for Ngati Porou Seafoods. This question is the inspiration for our article this month where I will attempt to answer that question.



So, what do we actually do ?

Ngati Porou Seafoods Group (NPSG) is a vertically integrated seafood business, that means we are involved in all levels of the supply chain.

We harvest our own quota, process the fish into products that are distributed to key export, national wholesale, and local retail market channels.

What do NPSG give back to its shareholders ?

The aim of NPSG is to develop a profitable and sustainable seafood business that promotes growth, development and opportunities for our people. We are still implementing this strategy and have achieved a lot.

In terms of giving back, to this point we have provided over \$3.5million in dividends since 2002 to our parent body. We also supply Kaimoana for tangihanga within our rohe, major Ngati Porou events, and donations of product only to assist sponsorship requests which are limited. We are also developing a scholarship program which will provide further opportunities to those who are passionate about a career in the fisheries space.

Where is the business located ?

We have taken over all the old Moana Pacific sites on the Esplanade wharf, which includes upstairs offices, export certified fish receiving and processing plant, shops and storage sheds.

Does NPSG own boats ?

No we don't at this stage. We prefer using local contract fishers at present. You must be a registered commercial fisher with a certified vessel and license to perform that function. There are a lot of compliance areas that must be followed. We will not work with fishers or companies that are not compliant.

Who are our shareholders ?

All Ngati Porou beneficiaries are shareholders of NPSG. Porou Ariki Trust is the body which provides governance over the fishing company on behalf of Ngati Porou beneficiaries.

What Assets do we have ?

In 2006 assets were \$2.0 million cash.

In 2010 we have :

Fish Quota valued at \$17.5million.

Aotearoa Fisheries Income Shares valued at \$16.9million.

Property on wharf valued at \$870k

Other Assets valued at \$300k.

How long has NPSG been operating ?

Operationally only 3 yrs, the Company was set up officially in 2002 and conducted quota leasing annually.

How many staff do we employ ?

We currently employ about 16 staff (excluding shared financial services team) mostly within the processing area. 95% of our staff are Maori or Pacific Islands and all have or are currently undergoing seafood industry training programs to NZQA national certificate levels.

Collectively our staff, including board, have over 100 years of experience in the fishing industry which is a great competitive advantage.

What brands does the company use to market its products and business ?

We have company brands and market brands which cover local retail and food service, while REALNZ is our domestic wholesale and export brand.



The freshest fish you can buy . . .



5.00am
Unloading the boat.



6.00am
Processing the fish.



8.30am
On display at Real Fresh.



g the fish for dinner.



5.45pm
Cooking the fish.



6.00pm
On the table mmmmm...



We catch, process and sell our fish locally.
No delays, no compromise.

real
fresh from the sea

www.realfreshnz.co.nz

Fresh Fish 7 Days A Week • Hours: Mon-Fri 8.30am – 5.00pm Sat 10.00am – 8.00pm
• 49 The Esplanade, Gisborne. • Tel (06) 867 9407

What products do we sell ?

Our core business is live crayfish and mussels or fresh chilled seafood in whole or fillet forms. We also stock smoked products, kina, oysters, marinades, sauces, and various types of seafood batters and salad dressing. We are unique in that we also cook seafood on site through "Off The Hook" our seafood takeaways. So we are a one stop seafood shop and if we don't have it just ask and we will find it for you.

How can I get a job with NPSG

Well if you are interested in a career in the fishing industry come and have a korero with me and we can see what opportunities exist in the area you are passionate about.

Contact: Mark Ngata (General Manager) or Nara Hayward, 47-53 The Esplanade, Kaiti, PO Box 1296, Gisborne. Telephone (06) 868 1644 or email : mngata@npsl.co.nz.

Do NPSG work with other Ngati Porou organisations ?

Yes we do, recently we formed a shared services finance team with TRONP. This team currently consists of six members who report to the Chief Financial Officer Russell Snow. They provide all financial services for both NPSG and TRONP. This initiative will create greater efficiency in financial monitoring which has become complex and diverse as both organisations have increased in size and most of all reduce costs to both organisations. I hope other NP entities will also come on board shortly.

TE HAEATA NEWSLETTER

AUGUST 2010

Ngati Porou whanui, tena tataua katoa,

E hika ma, tena koutou i o tataua tini mate e whakangaro atu nei i te tirohanga kanohi. No reira, e nga mate haere. Haere ki o tataua matua tipuna kei te po. Ko tataua o rataua roimata ki muri nei, kei te mihi atu kei te tangi atu hoki ki a koutou, otiia ki a tataua katoa.

Ko te tumanako, ka tutuki i a tataua nga take me nga kaupapa hei kawe i te iwi whanui ki nga taumata tiketike kia puawai ai nga hua mo te katoa, a, mo nga uri whakatipu hoki.

No reira, tena ano tataua katoa.

NGATI POROU TREATY SETTLEMENT – UPCOMING HUI

Te Haeata, the representative sub-committee tasked with negotiating a Treaty Settlement with the Crown, is happy with the progress that is being made towards a Settlement package for Ngati Porou to consider. Significant progress has also been made on developing a model for the Post Settlement Governance Entity (PSGE) or the Organisation that will represent Ngati Porou after Settlement.

This work could not have been achieved without the input, the ideas and feedback provided by our many whanau members who attended the various wananga that have been held at home and around the motu.

No reira, tena rawatu koutou katoa i tae ki nga hui ki te whakatakoto o koutou whakaaro, me nga wawata.

Te Haeata would like to provide you with one final opportunity to give input on the settlement package that has been negotiated to date; and the PSGE, at a number of hui to be held around the country.

At these hui, Te Haeata will give you an update on where things are at with the Settlement Package, and we would be keen to hear any ideas or feedback you have.

The dates and venues for the upcoming hui are as follows:

DATE	VENUE	TIME
Wednesday, 25 August 2010	Whakatane Te Wananga o Awanui-a-Rangi Cnr Francis St and Domain Rd Whakatane	Invercargill Te Wharekura o Arowhenua 734 Tweed St Newfield, Invercargill
Thursday, 26 August 2010	Gisborne Gisborne Hotel Cnr Tyndall and Huxley Rd Gisborne	Christchurch Nga Hau E Wha Marae 250 Pages Rd Bexley, Christchurch
Saturday, 28 August 2010	Hamilton University of Waikato Runanga Room, School of Maori, Gate 8, Hillcrest Rd Hamilton	Hastings Te Taiwhenua o Heretaunga 821 Orchard Rd Hastings
Sunday, 29 August 2010	Auckland TKKM o Maungarongo 140 Haverstock Rd Sandringham, Auckland	Wellington Kokiri Marae 7 9 Barnes St Seaview, Lower Hutt

We look forward to seeing you and your whanau at the hui.

NATIMAIL

And for all you Hearty-Natis out there don't bother with Hotmail or Gmail, show-off to your friends and whanau with your very own Natimail email address. It's free to sign-up and the only condition is Ngati Porou whakapapa.

Registering is easy, just go to the Te Haeata website or www.Natimail.com and follow the sign up instructions.



No reira, kia kaha ki a tatau!

Na matau o Te Haeata.

For more information on the
NATI POROU SETTLEMENT NEGOTIATIONS
check out our website

WWW.TEHAETA.CO.NZ

or call the Ngati Porou hotline

0800 NPOROU (0800 67 67 68)

Ngati Porou — He Iwi Moke, He Whanoke!

NGATI POROU REGISTER

This is just a reminder to you and your whanau, that if you want to be kept up-to-date with what is happening in Ngati Porou, and to vote on important issues relating to Ngati Porou like the Treaty Settlement, we encourage you to register on the Ngati Porou Iwi Register.

If you are already registered, we encourage you to check to make sure your details are correct.



You can register and check your
details online at:

www.ngatiporou.com or

call 0800 NPOROU (0800 67 67 68)

for a registration form to be sent to you or
for help with the registration process.



TE HAETA



TRONP BUSINESS FROM THE LENS OF THE CEO

What's TRONP been up to since the last issue of Nga Kohinga? Lots, but I'll only cover a few kaupapa.

Our staff have been getting on with business as we roll towards 2011, and what will probably be the last year of Te Runanga o Ngati Porou as we know it. Like the rest of Ngati Porou we are all very interested in what the Post Settlement Governance Entity (PSGE) will look like but we haven't let that cause us to lose focus on the tasks before us. With outputs for several government contracts to meet on a monthly basis staff have to keep focused on their own particular areas of work within the organisation. All credit to them as it is a challenging time.

Prospecting Permits

In the meantime, we have been responding to the latest move by Crown Minerals of the Ministry of Economic Development (MED) to issue a prospecting permit over a mixture of Crown-owned land, Maori-owned land and other privately-owned land covering approximately 1,599 square km north of a line running from Waiomatatini and curving west and then northwest to Whanarua Bay in the eastern Bay of Plenty.

We have made a submission (see www.ngatiporou.com for a copy) objecting to the permit on a number of grounds and outlining that the recent consultation processes completed by MED has been highly unsatisfactory from the Runanga's point of view. The timeframes provided for comment have been very limited and do not appreciate the Runanga's circumstances or the enormous concerns that exist within our communities in relation to mining and oil exploration. We have asked MED for more meaningful engagement on matters as important as this. We have also provided a list of marae chairs and their addresses so that in future responses to notifications are not missed because only the Runanga is receiving them. Some of our marae have since lodged submissions objecting to the issuing of this latest permit.

Marae Insurance

We are investigating with AON NZ and Waka Atawhai who are presently the brokers for marae insurance on the Coast to see what pricing advantage TRONP would get if we insured all our 48 marae as a collective. At present only about 35% of our marae are insured and their annual premiums range between \$1,000 and \$24,000 depending on the size of the buildings, the value of its taonga and what types of damage it is insured against. To find out what the total premium would be, all marae that have not been valued would have to be and that will cost. Some marae asked us to investigate this issue as they are finding their premiums are increasing and difficult to meet. It may come to nothing in the end but we are looking into it. We will keep you posted on developments.

Cost Efficiencies

The Chief Executives and General Managers of TRONP, Ngati Porou Hauora, Radio Ngati Porou,



Ngati Porou Seafood Group, Ngati Porou Whanui Forests, Pakihiroa Farms Ltd continue to meet every 6 weeks to consider where savings can be made by joint approaches to suppliers of goods and services.

Finance Team

The Finance Team has relocated to the Fisheries site at 49 The Esplanade and we now have a shared finance service with Ngati Porou Seafood Group. Of course, at this time of the year the finance team is heavily focussed on the audit of our annual accounts. The Annual Report for the Runanga will be available at the end of October and the AGM will be held at Pakirikiri Marae, Tokomaru Bay at the end of November.

Resource to Hapu

At the end of June six Hapu Clusters were each given approximately \$31k from the Runanga to help resource themselves better. Te Aitanga-a-Hauiti (Cluster 7) who had already established a cluster entity received their payment at the beginning of the year. While most of the entities are using the money to invest in the hapu collective some have opted to invest in their marae.

Marae grants this year will be approximately \$3,000 per marae. This amount is based on the dividend that our Fishing Company declares and will be paid in August.

CEOs Departure

When I took on the role of Chief Executive I committed to two years. Time has flown and with my departure in January 2011 we will be looking to transition the next CEO into the organisation towards the end of this year. Until then its full steam ahead with some very busy and hugely important months in front of us.

Dr Monty Soutar

Hui Taurima combines with Ngata Lectures

Planning is well underway for the 2010 Hui Taurima and Ta Apirana Ngata Memorial Lectures. The two hui feature annually as part of Te Runanga o Ngati Porou's calendar of events and this year will be held from the 2nd to the 5th of October, which is the middle of the next school holidays. "Both events will be staged at Ngata Memorial College and will be open to the public," said Runanga Chief Executive Dr Monty Soutar. "We have run the two hui together to give people coming home for the Hui Taurima reason to stay for a few days," he said. "By combining the events the logistics and costs are not as great. We are always looking for sponsorship to help cover the costs of the hui and this year we are pleased to see that ANZ Bank has come on board as a corporate sponsor. Our other new sponsor is Iwisaver who will be running a workshop during the hui."



Te ropu Kapa Haka o Porou Ariki

Arrangements for this year's Hui Taurima will be overseen by Hinetu Dell and Pane Kawhia who are currently planning the event in conjunction with the Runanga's Lillian Baldwin. Cultural groups from all over the Tairāwhiti and further afield are expected to attend the kapa haka extravaganza.

"It is a chance for kapa haka groups to perform in a non-competitive atmosphere," said Lillian, "You can drop your poi and you won't lose any marks because no one will be marking. It's an occasion to just enjoy being who we are."

Ngati Porou taura here groups from Auckland, Palmerston North and Wellington have already confirmed their attendance. "Auckland has the greatest concentration of Natis in the country," said Dr Soutar, "so it's great to see them supporting this event in numbers. Their kapa haka group, Porou Ariki, will be performing," he said. "They recently made Te Matatini representing the Tamaki Makaurau region. We are expecting many of the other local teams who performed at the Tamararo Festival earlier this year."

Ngata Lectures

The focus of this year's lectures over three nights from Sunday 30th October to Monday 5th October 2010 will be on Treaty Settlements with focus on Ngati Porou in a post-settlement environment. Hon. Chris Finlayson, Attorney-General, Minister for Treaty of Waitangi Negotiations and Hekia Parata, National list MP were unable to make it last year because of the weather and the state of the roads and are keen to make up for it this year. They will join Tukuroirangi Morgan on the first night of the lectures. Tuku will be sharing the Tainui post-settlement experience with us.

The second night will be given over to a presentation on what the settlement offer entails. Our Te Haeata negotiating group will outline the full offer which we hope will be finalised by then, and if it is, we expect Ngati Porou will be voting on whether to accept it later that month.

Given half the Ngati Porou population is under 30yrs the final night will again be given over to four speakers chosen from our young Natis.

There will also be sessions running in the afternoon before each night lecture. One of the highlights will be a Huinga Rangatahi where we are inviting feedback from our rangatahi on where they see Ngati Porou in the future. The last Huinga Rangatahi was held in twenty-five years ago at Porourangi marae. Erana Keelan-Reedy was one of the main organisers and she will be speaking to our rangatahi about the aspirations of the youth back then.

Another day session will focus on Ngati Porou People Power – How do we mobilise the second largest tribe in New Zealand and leverage their human capital? Who are we? Where do we live? How do we think? This will require some demographic analysis. But the aim will be to initiate discussion on how we bring all of Ngati Porou together after the Treaty Claims are settled.

Accommodation will be available for individuals or groups. Options include private or marae based accommodation.

Please contact Leeanne Morice or Hiria Shaw at Te Runanga o Ngati Porou Tel (06) 8649 004

Email lmorice@tronp.org.nz or hshaw@tronp.org.nz



Hekia Parata



Hon. Chris Finlayson



Ngata Lectures 2005

L to R: Victor Walker, Mate Kaiwai (late), Waimarama Taumaunu, Sir Henare Ngata, Hon. Parekura Horomia, Whai Ngata



Professor Emeritus Tamati Reedy who started the Ta Apirana Ngata Memorial Lectures 27 years ago.

The Lectures were the brainchild of Professor Emeritus Tamati Reedy. In 1983, he was serving a Fullbright Scholarship teaching a two semester course on Maori - Pacific Origins and Linguistics at the University of Alabama (USA). The irony of the situation hit him. "There I was feeding students and scholars on who and what we are - enabled of course by the generosity of the US scholarship system - and our own back home were unable to participate," Professor Reedy recalled. He wrote back home to Ngata College and introduced the idea of the

Ngata Memorial Lectures, to commemorate Sir A. T. Ngata and his monumental service to Ngati Porou and the nation. "John Clark was Principal then," recalled Tamati, "Kate Walker, Mate Kaiwai and Tom Te Maro were all totally in support," he said. "The first Lectures centred on C Company, where we were privileged with the attendance of Colonel Charles Bennett and our own Sir Henare Ngata, and many who've now passed on."

Hui Taurima and Ngata Lectures 2010

VENUE – NGATA COLLEGE			
October 2	October 3	October 4	October 5
Hui Taurima	Ngata Lectures (Day One)	Ngata Lectures (Day Two)	Ngata Lectures (Day Three)
10 a.m.	10 a.m.		10 a.m.
Kapa Haka	Church service Lunch		Huinga Rangatahi Lunch
	1-4.00 p.m.	1-4.00 p.m.	1-4.00 p.m.
Kapa Haka	Foreshore and Seabed Update	How to mobilise Ngati Porou People Power Dinner	Huinga Rangatahi Dinner
	Evening: 5.30pm – 8.30pm	Evening: 5.30pm – 8.30pm	Evening: 5.30pm – 8.30pm
Kapa Haka	1. Chris Finlayson Treaty Settlement 2. Hekia Parata Inspirational 3. Tukuroirangi Morgan Tainui, after the Settlement	Ngati Porou Treaty Settlement	1. Erana Keelan Reedy The last 25 years 2. 2 x Rangatahi

Update on Gout Genes Research in Tairāwhiti



Otago University researcher Dr Jade Hollis-Moffatt and her new-born baby Cole



Researcher from Otago University, Associate Professor Tony Merriman with children Jasmine (4) and Crawford (1) have lunch near Victoria Market in Melbourne

Learning about the gout in Te Tairāwhiti with NPH gout research nurse Nancy Aupouri and Otago University researchers Dr Jade Hollis-Moffatt and Associate Professor Tony Merriman.

Researchers are looking to understand the inherited causes of gout and share ways of managing and preventing the gout in our communities.

To do this they will be comparing gene variants. This involves genetic analysis of the genes that are involved in excreting uric acid from the body (through the kidneys and urine) as well as analysis of people in the Tairāwhiti.

In order to study the genetics of gout in our area the researchers require Whānau to participate. We are recruiting at least 150 people with the gout and 150 people who are gout free. So far they have recruited about half of the participants required.

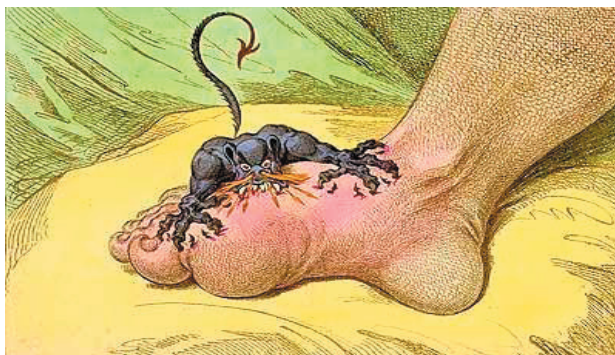
Gout occurs when high levels of uric acid in the blood solidify in the joints causing the immune system to inflame these joints. This is a painful crippling condition many of our Whānau suffer from and Māori men have the highest rate of gout in the world. This particular project is due to be completed by the end of 2011.

16

GOUT RESEARCH HUI Coming in September

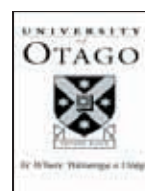
The Gout Research team will be on the Coast and in Gisborne around 13th to 15th September for community and clinic hui to present and discuss with you:

- **Research findings so far**
- **More information about fructose and the Gout**
- **Proposals for a follow-on project after 2011.**



This illustration is by the caricaturist, Jame Gillray (1757-1815). The image conveys a feeling of intense pain brought on by gout!

For further information enquire at your local NPH Clinic or contact Nancy Aupouri, Gout Research Nurse phone 021 963 219.



Over one hundred years ago the gout was rare, yet today it is common and quite often severe. *Why is this? Why could people have kai moana 100 years ago and not get the gout yet today it is a common trigger.*

The answer lies in something else in the environment which recent research suggests is likely to be fructose, part of refined sugar (also known as the fruit sugar). Fructose causes uric acid in the blood to increase which increases risk for the gout and we eat about 50 times more sugar than 100 years ago.



Lillian, Ko Ngāti Porou, Rongomaiwahine, Ngāti Tūwharetoa, Te Arawa ngā Iwi.

A smear test saved my life.

Lillian put off going for a smear test for nine years. When she finally went, they found changes to the cells on her cervix. She had treatment and now she's fine.

If Lillian hadn't had her smear test she wouldn't be alive today to share her story. She wouldn't be here for her four sons. She wouldn't be here for her whanau.

A smear test is a simple health check for all women who have ever been sexually active. If you haven't had one in the last three years, do it now.

Life is precious. Do it for yourself and for your whanau.



Don't put it off.

Contact your nurse, doctor or local health worker for an appointment.

Or call 0800 729 729 for more information.
www.cervicalscreening.govt.nz



New Zealand Government

New tool to estimate risk of heart disease in diabetics



Three University of Auckland researchers met with the NPH Board to present research findings about Diabetes & Cardio Vascular Disease Risk in May 09.

Board members and researchers pictured are from L-R standing - Amos Forrester for Tokomaru Bay, Essie Keelan for Uawa, Jennie HarreHindmarsh NPH Researcher, Helen Milner hospital services manager, G Paerata clinical advisor, Auckland University researchers Dr Raina Elley, Dr Tim Keneally, Dr Sue Crengle with Molly Para and Nell Paenga representatives for Turanga.

From L-R seated are George Jahnke Chairperson, Maude Garmonsway for Matakaoa, Marijke Warmenhoven for Ruatoria and Mateawa Keelan relieving Board secretary.

NPH clinics have a 'new' risk assessment tool that evaluates a person's level of risk of having a heart attack or stroke. If the level is high these risks can be treated quickly to avoid illness and damage.

In partnership with NPH and others the Auckland University researchers developed the more accurate method which predicts the level of risk of those with Type 2 Diabetes.

Findings reveal this risk may previously have been underestimated in many Māori.

The new risk assessment tool was developed using data from the NZ population so is more accurate than the old tool.

Results from the five year study were published recently by Dr Raina Elley and other researchers at the School of Population Health at University of Auckland.

These results showed that Māori with Type 2 Diabetes are 20-30% more likely to develop heart attacks or strokes than Europeans with diabetes. (And that this was after accounting for traditional risk factors such as elevated blood pressure, high cholesterol or smoking). A high blood sugar, protein in the urine or kidney damage increases the risk of heart disease even more.

Besides diet, exercise and avoiding smoking, medications can also halve the risk of heart disease and stroke. NZ guidelines recommend heart medications are offered to people once they reach 'high risk' even before they have had a heart attack or stroke.

Important conclusions of this research for Māori are:

- Cardiovascular risk assessments should **start** at the age of 35 years for men and 45 years for women.
- **Regular** testing for diabetes should start even earlier.
- Diet, exercise and avoiding smoking are the **best** ways to protect ourselves and prevent heart disease, stroke and other complications of diabetes.

The Hauora clinics offer regular checks for early signs of diabetes and activities to keep ourselves well. The more we do together to prevent diabetes, detect its early signs, manage these earlier and protect people from damaging complications, heart attacks and strokes - the better.

Services such as Ngati & Healthy and Aukati Kai Paipa support Ngati Porou whanau to embrace the protection actions that help to keep us well.

Cardiology Team holds Assessment Clinic in Te Puia



Members of the cardiology team at Te Whare Hauora in Te Puia are (left to right) Tawhiti clinic receptionist Gina Waikaho, registered nurse Te Miringa Huriwai, radiographer Margriet Esenbrink, nurse specialist Tracy Low, Cardiac Heart Failure Nurse Specialist Kristen Willock, Dr Raewyn Fisher, Dr Gerry Devlin and Echo Sonographer Jill Eastham.

Two Cardiologists from Waikato Hospital a Stenographer and two Nurse Specialists from Tairāwhiti Hospital linked with Ngāti Porou Hauora staff to provide cardiology assessments for sixteen people from the coast at Te Whare Hauora, Te Puia in May.

The focus was to assess those people who had had Rheumatic Fever in childhood but for one reason or another had not been to the Specialist clinic in Gisborne for over a year.

Rheumatic fever damages the heart valves unless it is diagnosed early and treatment is regular and long term. The clinic went very well and it is planned to hold another in the future (date to be confirmed).

He panui ki te whanau

If you had rheumatic fever as a child and do not go to your local GP for regular yearly checks, please contact your local clinic for an X-ray appointment and to have blood tests so that the doctor or nurse can put your name on the list to attend the next cardiology clinic.

DON'T WAIT TO HAVE A HEART ATTACK OR STROKE - GET CHECKED NOW!

Even when you feel well - Ask your Doctor or Nurse

- Have I had a diabetes check in the last 1-2 years?
- What is my cardiovascular risk? Is it 'high' - greater than 15%?
- How could I change my/our diet and exercise to lower the risk?
- Should I be on the protective medications?
- If you have diabetes, ask - what is my blood sugar level (HbA1c test result)?

If your blood sugar (HbA1c) is above 7% then you need to increase your medication - unless you can get your blood sugar level to 7% or less by losing weight and exercising at least 30 minutes per day, most days of the week.

**TANGATA TU, TANGATA ORA
TANGATA NOHO, TANGATA MATE**

**AN ACTIVE PERSON SURVIVES
AN IDLE PERSON SUFFERS**



**THE UNIVERSITY OF AUCKLAND
FACULTY OF MEDICAL AND
HEALTH SCIENCES**

Panui from the Board

Nominations for Upcoming Elections

If you are passionate about the health of your Whanau and community and can contribute to the strategic improvement of health for Ngati Porou – We need you. NPH Board elections for Waiapu, Te Puia Springs / Waipiro Bay and Uawa communities and the NPH Staff Representative will be held in September / October prior to the AGM.

Board members must be

- 18 years of age and over
- On the Ngati Porou PHO register
- Have resided in the community 12 months immediately preceding election
- Be of Ngati Porou descent

Further details regarding nomination process, dates and venues will be advertised shortly in the local community, Gisborne Herald, Radio Ngati Porou and Uawa FM.

Annual General Meeting 2010

The NPH AGM will be held on 29th October in the Waiapu community. Further details regarding the time and venue will be advised shortly.

Strategic Plan 2010 - 2015

Copies of the NPH Strategic Plan 2010-2015 are now available from the Board office following Community presentations held in July/August 2010.

For further details of any of the above events please contact Marie Davis
Board Secretary phone 06 8646803 ext 856 or email marie.davis@nph.org.nz

Hospital gains experienced Administrator

Te Whare Hauora welcomes Martin Clarke in the role of Hospital Services Administrator.

Administration of hospital services involves providing a link between the Hospital Services Manager Helen Milner and the Hospital ward, Maternity, Home based services and Kitchen services. The role also includes some interlinking with NPH clinics and other services.

Martin brings twenty five years experience and skills in the Healthcare profession and has set to the task of improving the hospital's administration service, the ward and emergency department. He has come from a background of anaesthetics, nursing and administration in hospitals here in NZ as well as in Holland and the UK.

Previously employed by Southern Cross Hospital in Hamilton Martin now lives with his partner in Tokomaru Bay.

Martin says he loves living in Tokomaru Bay and supporting the Ngati Porou community through his work at the hospital. He believes that being active



Martin Clarke the new Hospital Administrator at Te Whare Hauora in Te Puia

and promoting a healthy lifestyle in the community is important.

He spends some spare time swimming in the sea and is also an active member of the YMCA gym in Tokomaru Bay.

'I like the gym and would like to encourage others in the community to attend. It is wonderful to be part of the community and the gym is a great place to meet and have lots of fun,' says Martin.



He Rongoā Pai, He Oranga Whānau

Whānau staying well with medicines

PHARMAC is offering a FREE two-day wānanga on medicines including Rongoā Māori for health professionals working with Māori. The wānanga will help people understand about the safe and effective use, storage and disposal of medicine, and Rongoā Māori.

Venue	Dates for 2010
Te Kuiti	16-17 August
Rotorua	13-14 September
Tokomaru Bay	18-19 October
Auckland	15-16 November

For more information visit www.hrphow.co.nz
or contact Awhimai Reynolds on **Ph: 04 916 7594**
or email: awhimai.reynolds@pharmac.govt.nz

Te Kāwanatanga o Aotearoa

PHARMAC
Pharmaceutical Management Agency



Radio Ngati Porou Events and Visitors

RNP Birthday Celebrations

On the road: (Venues to be confirmed and broadcast on RNP)

Tuesday 31 August Kawakawa mai tawhiti

Wednesday 1 September Waiapu

Thursday 2 September Tokomaru Bay

Friday 3 September Kaiti

Listen to RNP to hear where we will be in your community during our birthday week. We look forward to celebrating our birthday with you all



Radio Ngati Porou was honored to host Dame Anne Salmond and the Blue Bach Production company who are doing a documentary about Dame Anne's tipuna James McDonald, a photographer who travelled the coast taking photographs. Nga Take o te wa host Ngarangi Walker says "interviewing Dame Anne was the highlight of her career".

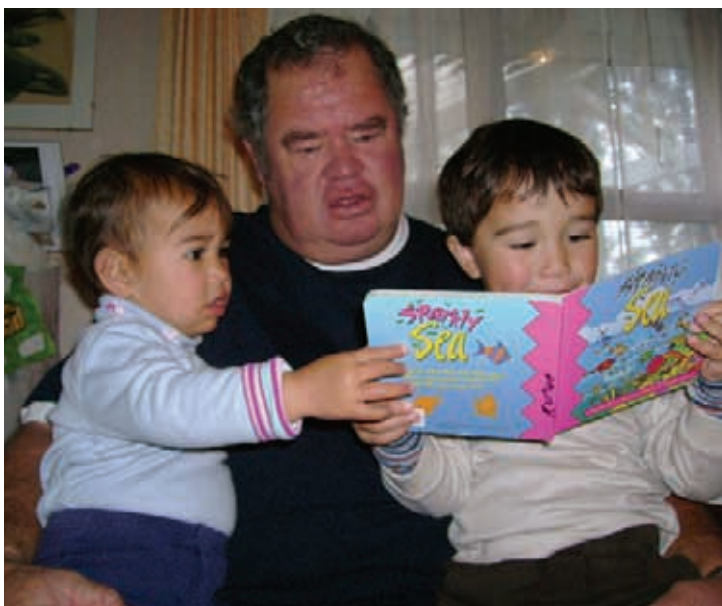
Ngati Porou Whanui Forests Ltd by Tina Porou

NPWFL has been working hard over the last few months to complete planned silviculture activity on our blocks. Weather has made this difficult, however we are on track to complete this work over the remaining year. We intend to complete our silviculture work in 2011.

We are also working hard in the carbon area to understand our opportunities on the East Coast for the recruitment of land for the purposes of carbon forests. Ngati Porou has great potential in this area on marginal lands. Our company is working to provide the best options for our people to engage in the ETS and provide social and environmental benefits for landowners. Part of this work is ensuring that we know what the ETS means for us, understanding the lands of Ngati Porou and listening to the aspirations of Ngati Porou in this space. We will continue to update landowners as we develop this thinking.

We would like to take the opportunity to profile members of our staff in the next issues of Nga Kohinga beginning with our Forestry Manager, John Kopua.

John Kopua - Forestry Manager



John Kopua with his mokopuna

John was born in 1950 in Fielding to Patari and Robin. He is married to Kay and they have two children and two grandchildren. John attended Te Aute College and then went on to work in a range of land based industries including farming and forestry. He was part of the NZ Forest Service in the late 1960's then went on to become a Woodsman Instructor in the Kaingaroa Forests. In 1982 John moved to a position as a Forest Ranger for 21C Tokomaru Forest and in 1989 joined Ngati Porou Forests. In 2008 John became the Operations Manager Ngati Porou Forests Ltd. When asked what John's 'likes' were he replied "family, fishing and beer". John's role in the business is essential to our organisation and he manages much of the day to day operations on the ground including staffing responsibilities.

22

Update on the Emissions Trading Scheme

Pre-1990 Forest Land Allocation Plan approved

People who own Pre 1990 forest land need to understand their options under the ETS. 'Pre-1990 forests' are land that was forested as at 31 December 1989 and remained forested on 31 December 2007. Old-growth indigenous forest that remains in forest is not subject to the rules of the ETS.

Under the ETS, owners of pre-1990 forest land will be required to surrender New Zealand Units (NZUs) if they deforest – that is, clear more than two hectares between 2008-2012 and introduce a new land use, such as agriculture.

MAF is holding a Public Seminar and Hui for Pre 1990 forest land owners in Gisborne to give them more information about their options under the ETS.

These will cover, key concepts of the scheme, options available, allocations and exemptions. It will also cover how to apply for these options.

For more information visit:

www.maf.govt.nz/forestry-allocation or call 0800 CLIMATE (0800 254628)

Japanese Agribusiness Trip by Tina Porou



Above: Part of the New Zealand Delegation to Japan at the NZ Embassy in Tokyo

I was selected to attend an agribusiness trip to Japan in July of this year. In the bilateral talks with the Foreign Minister of New Zealand Hon Murray McCully on 29 April, 2009, the then Foreign Minister of Japan, Hirofumi Nakasone introduced a new invitation plan for 50 young New Zealanders to Japan.

The Invitation Programme for Special Fields Counterparts from New Zealand is an invitation programme, through which young New Zealand professionals, who will assume greater responsibilities in the coming years and are strongly interested in strengthening relations with Japan, would visit and experience Japan, its society, culture, and people.

I learned a lot about the ageing population of Japan and the increase of single households in their country. There are many more males than females in Japan and as Japanese women go to work in larger numbers, marriages are declining. The ageing population has seen the elderly caring for agricultural crops like rice paddies and some dairy in Hokaido. Some 300,000 ha of land has been 'abandoned' as young people move into the cities away from rural areas in search of employment and entertainment. Some farmers are in their 90's and they have no-one to pass the land onto so they just give it away or leave it fallow.

It was clear that their cultural traditions in agribusiness were still more important than profitability in many cases. They have a real focus on detail and presentation, they are risk adverse and conservative in their agricultural businesses and they are very thoughtful, respectful and polite. The Japanese put much value in the importance of long term relationships and trust.

The Japanese Government is very active around climate change and they are currently considering their Emissions trading scheme. However in addition to this, the Japanese government is trying to increase the amount of food they produce in Japan to reduce their reliance on imports. They are unlikely to want to plant further lands in trees to offset their emissions of the some 126 million people that reside in Japan when



Above: 1000 year old paddy field just outside of Tokyo, hand carved and managed by elderly farmers

Right: Square watermelon trained to grow in that shape, maybe football shaped watermelon for the world cup for Ngati Porou?



they need food more. There could be opportunities for carbon plantings offshore for them and these may be opportunities for marginal Maori lands.

All in all it was an important trip in understanding the Japanese market for forests in the future, both in carbon and plantation forestry and one that will stay with me for some time. Japan is a beautiful country, rich in history and culture but that has transformed itself into a commercial force. The synergies between our two cultures are ones I believe we can explore further. My thanks to the Japanese Government who fully funded the trip.

DAFFODIL DEDICATION DAY

FRIDAY 27TH AUGUST - RADIO NGATI POROU

9AM - 2PM

PLEDGE \$5 OR MORE

REQUEST ANY SONG SUNG BY ANY SINGER & WE'LL MAKE IT HAPPEN ON AIR!

In 2008 and 2009 our community raised \$1500 for the Gisborne/East Coast Cancer Society
We need your help once again to raise money for this very worthy cause.

We are taking pledges & requests NOW!

Call (06) 8648020 or email: reception@radiongatioporou.co.nz

If you cant make it in person, tune into RNP or visit www.radiongatioporou.co.nz for regular updates
of the tally raised



COME & JOIN US!
- GREAT LIVE MUSIC
- SCHOOLS & ORGANISATIONS
ARE WELCOME!



ALL PROCEEDS WILL GO TO THE GISBORNE/EAST COAST CANCER SOCIETY