

PERFORMING ARTS CENTER

PROGRAM DESCRIPTION

A state-of-the-art Performing Arts Center should be clustered with spaces the community will use. The Center will support the Music, Drama, Dance and Pathway Programs that fall under the Arts, Media and Entertainment Industry Sector. A 900-seat theater would accommodate all school gatherings such as assemblies

and serve as a beacon for the community. The theater should be surrounded by studios and support spaces needed for these programs. For new construction, evaluate existing site grades and utility infrastructure to ensure the most cost-effective placement of a Performing Arts Center. Establish clearly delineated public zones and back-of-house spaces and entries. Spaces should be flexible and multi-functional to increase the space utilization ratio. Music spaces will need more robust acoustical treatments and details for soundproofing rooms in which professional recordings will take place.



SPACE CONSIDERATIONS

The entry to the Theater should serve as a transition from the street to serve as a public gathering space before and after performances and is adjacent to public parking and the front of the campus. An external courtyard can serve as an extension of lobby. The 900-seat Theater should have a primary entry points from the main Lobby to utilize the common support spaces such as concessions, public restrooms and the ticket booth. Light and sound locks at each theater entry point would allow visual and acoustic separation of the lobby functions.

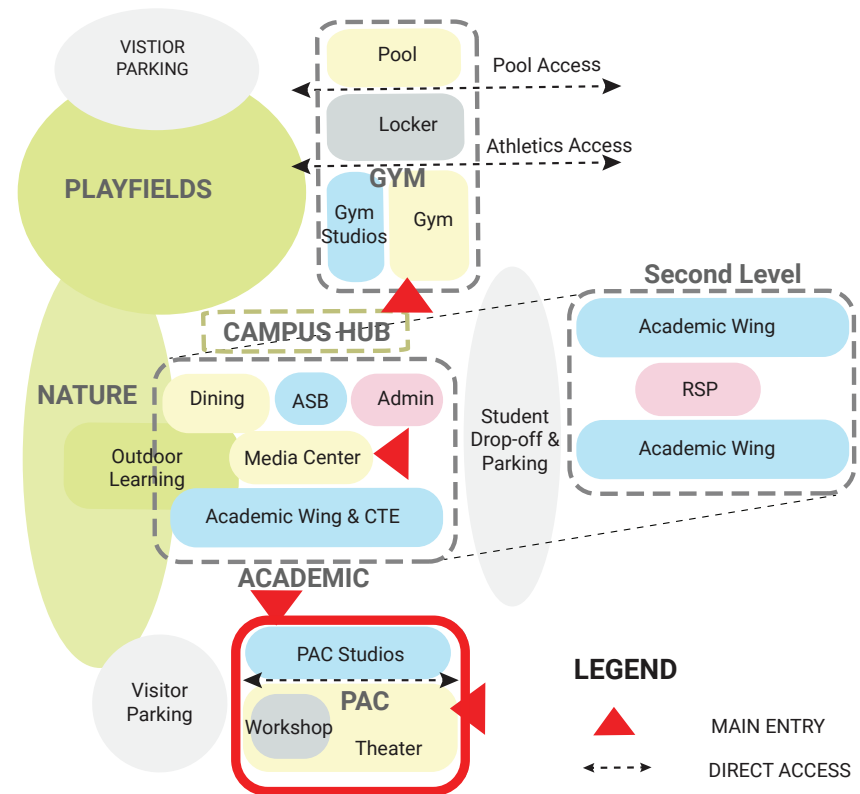
Key planning principles for the Lobby to the theaters include:

- Lobby restrooms should only be accessible during performances to reduce supervision issues.
- Gallery space for 2D/3D display of student work from arts programs will instill school pride and make the learning at CUSD visible to the community. This display can be done in many ways: (can be digital screens, within display cases or hung on walls)
- Digital displays to broadcast live performances from the Theater to the lobby as well as other parts of the campus.

The Music Program shares adjacencies to the main theater and its back-of-house services. Purpose designed space is needed for the Dance Studios and for each discipline of Music (Digital, Instrumental, Ensemble and Choral). This allows the Theater to

SPATIAL RELATIONSHIPS AND ADJACENCIES

KEY PLAN



be available for scheduling large events during and after school cueing and coordinate exterior cueing with weather protection area.

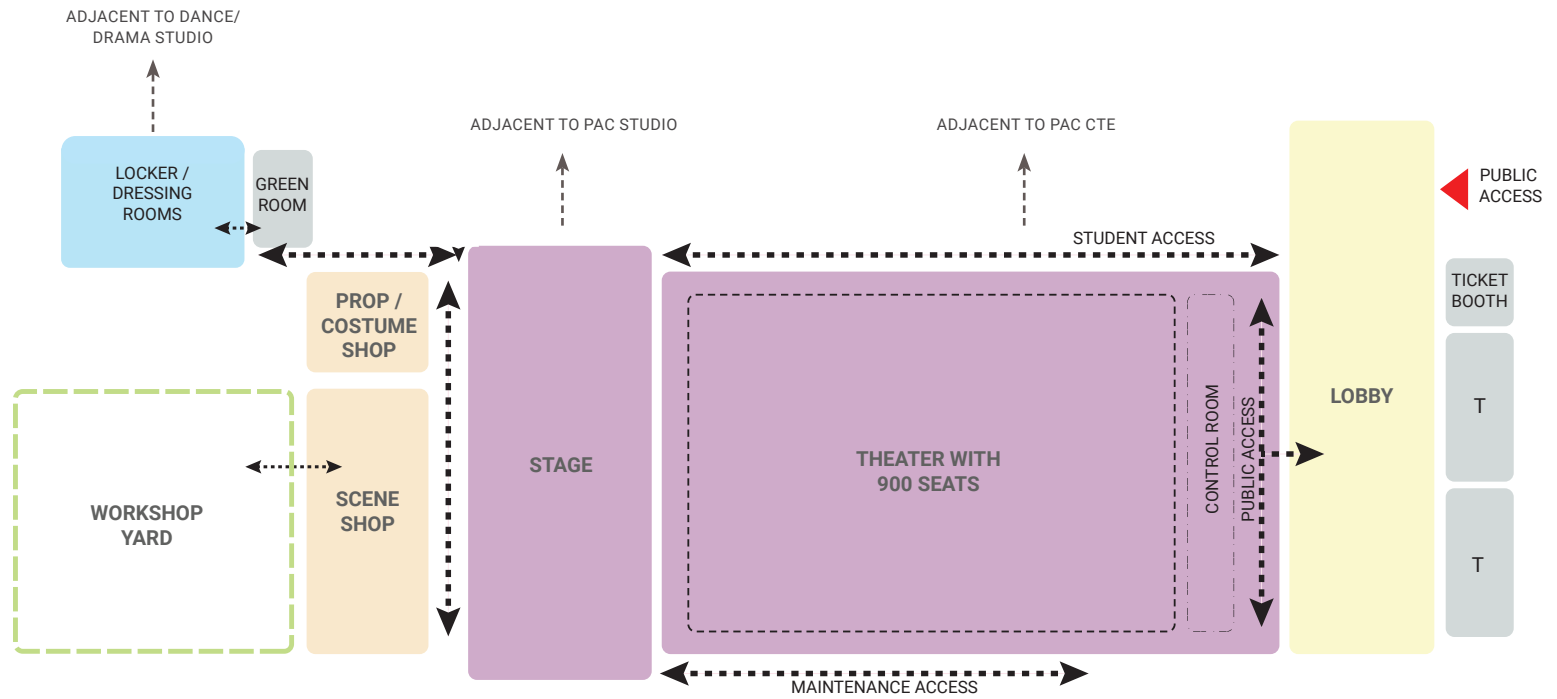
- Key design guidelines for acoustics are provided in Section K of this chapter, however an acoustical consultant will be necessary:

Theater Stage:

- Proscenium opening approximately 50 ft. wide x 22 ft. tall (ability to reduce to 40'-0" wide)
- Main stage for space 50 ft. wide by 30 ft. deep from upstage to back wall
- Wing space minimum 20 ft. wide by 40 ft. deep
- Area to store Orchestra Shell

SPATIAL RELATIONSHIPS AND ADJACENCIES

PERFORMING ARTS CENTER | THEATER



LEGEND

-  MAIN ENTRY
-  DIRECT ACCESS

INDIVIDUAL SPACE DESCRIPTION

MAIN THEATER

Spatial program:

(1) at 8,000-10,000 SF

Activities description:

The Main Theater to contain 900 seats for a variety of school and community lecture and performance functions including school assembly, lecture, drama, band and orchestra concerts, choral and dance performances, and video presentations. Live streaming of performances may be possible with brought-in video production equipment set up in the Theater and its control room. The theater should have direct access from the lobby. The main access to the theater shall be outside of the secured campus core. This will allow the theater to accommodate public, community events or after school activities. It is fully supported with a flat orchestra pit, scene shop, control room, dressing rooms, and prop & costume spaces.

Adjacencies and support spaces:

- Stage
- Scene Shop
- Props and Costume
- Lobby, Concessions and Ticketing
- Main Theater Control Room
- Dressing Room
- Dimmer Room
- AV Rack Room
- Restroom

Finishes and Materials:

- Floor: Built-up wood flooring at stage, carpet in aisles, polished concrete at seating areas
- Walls: Acoustical wall panels in varying thickness to achieve the desired acoustical ratings
- Ceiling: Exposed with acoustical treatment

Millwork/ Fixtures:

- House mix position
- Fixed theater seating

Furnishings:

- Movable seating for control room and orchestra pit

Technology / Electrical:

- Anticipated owner-purchased portable equipment, including:
 - L/C/R loudspeaker system with subwoofer for low frequency extension and front-fill loudspeakers to cover the front rows
 - Video projection system with lamp-less projector in the control room
 - 4 channel production intercom system
 - Microphones suspended from catwalk and rigging
 - Fixed camera at rear of the house
 - Utility system for events requiring minimum technology
- Motorized projection screen
- Outlets for general room requirements and workstation use.
- Data-hardwire and/ or wireless

LOBBY

Spatial program:

(1) at 1,400-1,500 SF

Activities description:

The PAC lobby serves as the pre-function and gathering space for theater performances, and gallery space for exhibition of student work. The lobby connects the main theater with part of the CTE program (Video Production Lab), making the space more vibrant, active with variety of activities ranging from learning, teaching and producing to community-oriented activities. Concessions and Ticket within the lobby to sell tickets, packaged foods, snacks and beverages.

Adjacencies and support spaces:

- Theater House
- Concessions and Tickets (support space)
- Video Production Lab
- Digital Music Lab
- Public Restrooms

Finishes and Materials:

- Floor: Polished Concrete or carpet tiles

- Walls: Painted gypsum board, vinyl wall covering over gypsum board or tackable surface, acoustical wall treatment
- Ceiling: Decorative wood grille panel system ceiling, suspended acoustic ceiling panels (ACT) in Concessions and Ticket
- Roller shade with transparent sunscreens

Millwork/ Fixtures:

- Working counter with storage below in Concessions and Ticket
- Sink in Concessions and Ticket
- Drinking fountains near Public Restrooms

Furnishings:

- Task chair at working counter (Ticket Booth)

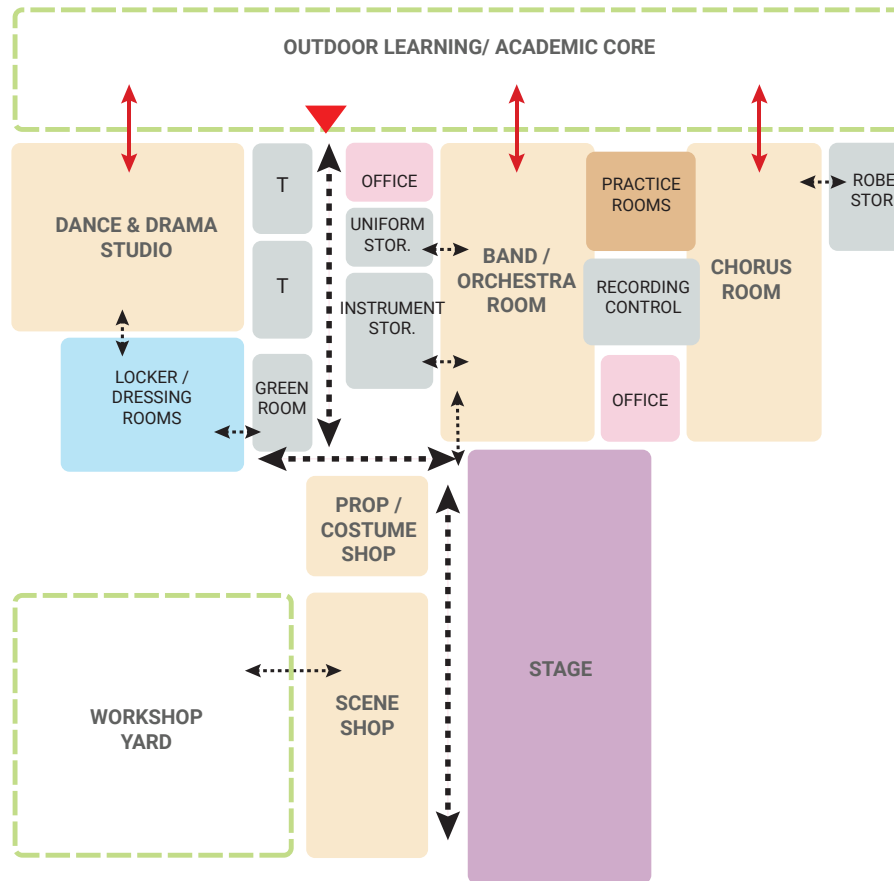
Technology / Electrical

- Ceiling loudspeakers to hear program from Theatre and FOH paging from ticketing
- Wireless Network Access
- Synchronized clock






SPATIAL RELATIONSHIPS AND ADJACENCIES

PERFORMING ARTS CENTER | STUDIOS



LEGEND

-  MAIN ENTRY
-  EYE LEVEL TRANSPARENCY
-  DIRECT ACCESS

INDIVIDUAL SPACE DESCRIPTION

DANCE & DRAMA STUDIO

Spatial program:

(1) at 1,800-1900 SF

Activities description:

Dance and Drama Studio serves for dance instruction and practice, and theater performance rehearsal.

Adjacencies and support spaces:

- Stage
- Locker / Dressing Room (support space)
- Dance Storage
- Green Room

Finishes and Materials:

- Floor: Built-up wood sprung dance flooring with neoprene pads underneath
- Walls: mirror walls, vinyl wall covering over gypsum board or tackable surface, acoustical wall treatment, wall panels for AV connections, wall treatments to be floor to ceiling
- Ceiling: Pipe grid for performance equipment
- Sidelite or view panel at doors
- Roller shade at windows

Millwork/ Fixtures:

- Masking drapery on curtain track to provide isolation for performance area
- Permanent ballet barres

Furnishings:

- Teacher desk with pedestal file
- Portable audience seating risers and loose chairs
- Mobile AV rack

Technology / Electrical:

- Anticipated owner purchased portable equipment including:
 - Wall-mounted self-powered loudspeakers
 - Ceiling microphones for archival audio recording
 - Solid-state audio recorder for archival recording
 - Small analog mixer
- Assistive Listening System (FM)
- AV connections around the room and terminated to patch bays in a wall-mounted AV rack
- Theatrical lighting control system for control of LED stage lighting fixtures
- Outlets to meet code
- Wireless Network Access
- Telephone
- Synchronized clock

LOCKER/ DRESSING ROOM

Spatial program:

(2) at 300 SF each

Activities description:

Locker/Dressing room designed to accommodate preparation activities such as make-up, costume changing for auditorium and theater performances, as well as Dance Studio

Adjacencies and support spaces:

- Dance and Drama Studio
- Stage
- Prop and Costume Shop
- Green Room
- Restroom (support space)

Finishes and Materials:

- Floor: Resilient flooring
- Walls: Painted gypsum board, vinyl wall covering over gypsum board or tackable surface, acoustical wall treatment, wall panel for ceiling loudspeaker volume control and Theatre and Dance/ Drama Studio intercom connection, wall treatments to be floor to ceiling

- Ceiling: Acoustic ceiling tile
- Door: Solid door panel, no sidelight

Millwork/ Fixtures:

- Make-up station with lighting and shelf for storage
- Lockers
- Wall mirror

Furnishings:

- Task chairs at make-up station
- Rolling clothing racks

Technology / Electrical

- Ceiling loudspeakers to hear program and paging from Theatre and Dance/Drama Studio
- Outlets to meet code
- Wireless Network Access
- Assisted Listening
- Synchronized clock

GREEN ROOM

Spatial program:

(1) at 300 SF

Activities description:

Green room designated for the students / performers as a waiting space and group gathering room when they are not performing

Adjacencies and support spaces:

- Dance and Drama Studio
- Locker/Dressing Room
- Stage

Finishes and Materials:

- Floor: Resilient flooring

- Walls: Painted gypsum board, vinyl wall covering over gypsum board or tackable surface, acoustical wall treatment, wall panel for ceiling loudspeaker volume control and Theatre and Dance/ Drama studio intercom connection, wall treatments to be floor to ceiling
- Ceiling: Acoustic ceiling tile
- View panel at door

Millwork/ Fixtures:

- N/A

Furnishings:

- Sofas
- Side table
- Lounge chairs

Technology / Electrical:

- Wall mounted digital display for viewing activity on Theater Stage
- Ceiling loudspeakers to hear program and paging from Theatre
- Wall panel for ceiling loudspeaker volume control and Theatre intercom connection
- Outlets to meet code
- Wireless Network Access
- Assisted Listening
- Synchronized clock

INDIVIDUAL SPACE DESCRIPTION

CHORUS ROOM

Spatial program:

(1) at 1350-1400 SF

Activities description:

Large and small group choral / vocal music instruction and rehearsal supported by robe storage and recording control. Rehearsal and singing activities can be recorded at the mobile rack or in the Recording Control Room.

Adjacencies and support spaces:

- Recording Control
- Practice Rooms
- Staff Office
- Robe Storage (support space)

Finishes and Materials:

- Floor: Resilient flooring
- Walls: Painted gypsum board, vinyl wall covering over gypsum board or tackable surface, acoustical wall treatment, whiteboard wall treatment for interactive throw projectors approved by projector manufacturer, wall panels for AV connections, wall treatments to be floor to ceiling
- Ceiling: Combination of acoustical ceiling tile and pyramidal sound diffuser tiles
- Doors with view panel
- Roller shade with visually transparent sunscreens

Millwork/ Fixtures:

- Tall storage cabinets with doors (Robe Storage)
- White board with staff lines
- Masking drapery and curtain track for variable acoustics, with reflector "pockets" for full drapery retraction

Furnishings:

- Adequate storage cabinets for staff and student supplies and equipment
- Choral risers for (74) students

- (1) mobile AV rack
- Mobile clothing racks (Robe Storage)

Technology / Electrical

- Interactive short throw projector OFCI (All wall-mounted Interactive flat panel displays and projectors shall be appropriately sized for each space)
- Wall-mounted self-powered loudspeakers
- Ceiling microphones for archival audio recording
- Solid-state audio recorder for archival recording
- Small analog mixer
- Assistive Listening System (FM)
- Static camera
- Outlets for general room requirements
- Telephone/intercom handset, VoIP
- Wireless Network Access
- Synchronized clock

BAND / ORCHESTRA ROOM

Spatial program:

(1) at 1,800-1900 SF

Activities description:

Large and small group band instruction and rehearsal space supported by uniform storage, instrument storage and recording control. The rehearsal activities can be recorded and at the mobile rack or in the Recording Control room

Adjacencies and support spaces:

- Recording Control
- Uniform Storage (support space)
- Instrument Storage (support space)
- Practice Rooms

Finishes and Materials:

- Floor: Resilient flooring

- Walls: Painted gypsum board, vinyl wall covering over gypsum board or tackable surface, acoustical wall treatment, whiteboard wall treatment
- Ceiling: Combination of acoustical ceiling tile, pyramidal sound diffuser tiles
- Doors with view panel or sidelite
- Roller shade with black-out sunscreens

Millwork/ Fixtures:

- Tall storage cabinets with adjustable shelving and hinged doors with locks (Instrument Storage),

Furnishings:

- (66) mobile seating pedestals
- (25-66) music stands
- Instrument racks (Instrument Storage)
- Mobile metal shelving (uniform storage)

Technology / Electrical:

- Wall-mounted loudspeakers
- Ceiling microphones for archival audio recording
- Solid-state audio recorder for archival recording
- Small analog mixer
- Assistive Listening System (FM)
- Static camera
- Outlets for general room requirements
- Wireless Network Access
- Synchronized clock

PRACTICE ROOMS

Spatial program:

(4) at 70-80 SF each

Activities description:

As shared support spaces to the chorus room and band/orchestra room, the practice rooms accommodate Individual and small group instrument and vocal music instruction and rehearsal. Rehearsals can be recorded via Recording Control Room.

Adjacencies and support spaces:

- Band / Orchestra Room
- Chorus Room
- Recording Control

Finishes and Materials:

- Floor: Resilient flooring
- Walls: Painted gypsum board, vinyl wall covering over gypsum board or tackable surface, acoustical wall treatment, whiteboard wall treatment for interactive throw projectors approved by projector manufacturer, wall panels for AV connections, wall treatments to be floor to ceiling
- Ceiling: Acoustic ceiling tiles
- Soundproof doors with view panel or sidelight

Millwork/ Fixtures:

- N/A

Furnishings:

- N/A

Technology / Electrical:

- Recording equipment OFCI
- Outlets for general room requirements
- Wireless Network Access
- Synchronized clock

SCENE SHOP

Spatial program:

(1) at 1100-1200 SF

Activities description:

The Scene Shop serves as an instructional learning studio for set design in support of various student theater performances to include construction of scenery-scale objects and props, and painting of scenery.

Adjacencies and support spaces:

- Stage
- Prop and Costume Shop
- Workshop Yard/ Loading Area

Finishes and Materials:

- Floor: Polished concrete
- Walls: Painted gypsum board, pegboard for hanging tools, vinyl wall covering over gypsum board or tackable surface, wall treatments to be floor to ceiling
- Ceiling: Exposed structure
- Door with view panel
- Roll-up/ overhead door access for large material (to stage and exterior)

Millwork/ Fixtures:

- Utility sinks
- Eye wash station
- Flammable paint storage (with locks)
- Work bench with cabinets below
- Scenery storage racks
- Fixed worktable with sanded and sealed table top
- 2 level cantilever metal arm racks for large equipment and props

Furnishings:

- Tool storage fence with door (with locks)
- Woodshop or similar equipment such as table saw, band saw, hand power tools, etc to be purchased by District

Technology / Electrical

- Wall-mounted loudspeaker to hear program and paging from Theatre
- Flexible power availability
- Distribute eight 20A convenience circuits around perimeter of room
- Distribute four 20A, 208V, 3 phase circuits for large power tools
- Provide one 50A, 120V circuit for welder
- Outlets for general room requirements
- Wireless Network Access
- Synchronized clock

PROP/ COSTUME SHOP

Spatial program:

(1) at 550-600 SF

Activities description:

The Prop & Costume Shop serves as an instructional and support learning studio for set design in support of various student theater performances to include construction of scenery-scale objects and props, and costumes.

Adjacencies and support spaces:

- Scene Shop / Tools
- Theater
- Stage
- Storage

Finishes and Materials:

- Floor: Sealed concrete
- Walls: Painted gypsum board, vinyl wall covering over gypsum board or tackable surface, acoustical wall treatment, wall panel for loudspeaker volume control and Theatre intercom connection, wall treatments to be floor to ceiling
- Ceiling: Exposed
- Door with view panel

Millwork/ Fixtures:

- (3) fixed sewing tables with shelving above
- Plastic bins and fabric bolt shelving

- Open shelving,
- Laundry sink
- Eyewash station
- Washer and dryer to be purchased by District

Furnishings:

- (2) large Worktables, adjustable height
- (3) rolling costume racks
- Sewing machines and other equipment to be purchased by District

Technology / Electrical

- Wall-mounted loudspeaker to hear program and paging from Theatre
- Outlets for general room requirements
- Wireless Network Access
- Telephone
- Synchronized clock

OFFICE

Spatial program:

(9) at 100-150 SF each

Activities description:

Office space to prepare materials, make private phone calls and conduct administrative activities to include individual and small group meetings and consultations with colleagues, staff, students, and parents.

Adjacencies and support spaces:

- PAC Studios

Finishes and Materials:

- Floor: Carpet tiles
- Walls: Painted gypsum board, vinyl wall covering over gypsum board or tackable surface, acoustical wall treatment, whiteboard wall treatment for interactive throw projectors approved by projector manufacturer, wall treatments to be floor to ceiling
- Ceiling: Suspended acoustical tile (ACT)
- Door: View panel or sight light
- Roller shade with visually transparent sunscreen at window

Millwork/ Fixtures:

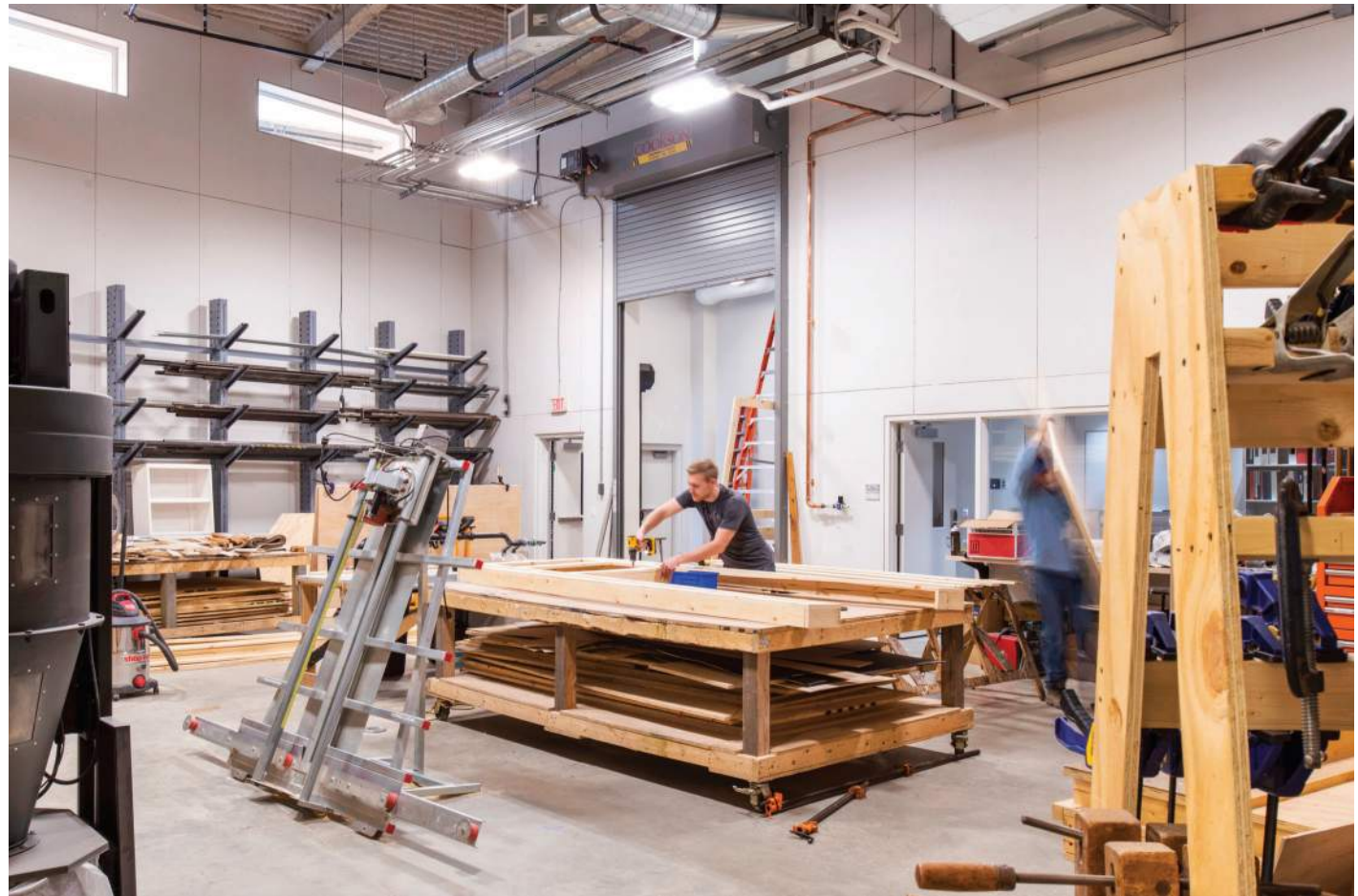
- N/A

Furnishings:

- (1) Private office workstation
- (2) guest chairs
- Credenza
- Lateral filing cabinet
- Mobile filing cabinet with cushion top
- Bookshelves

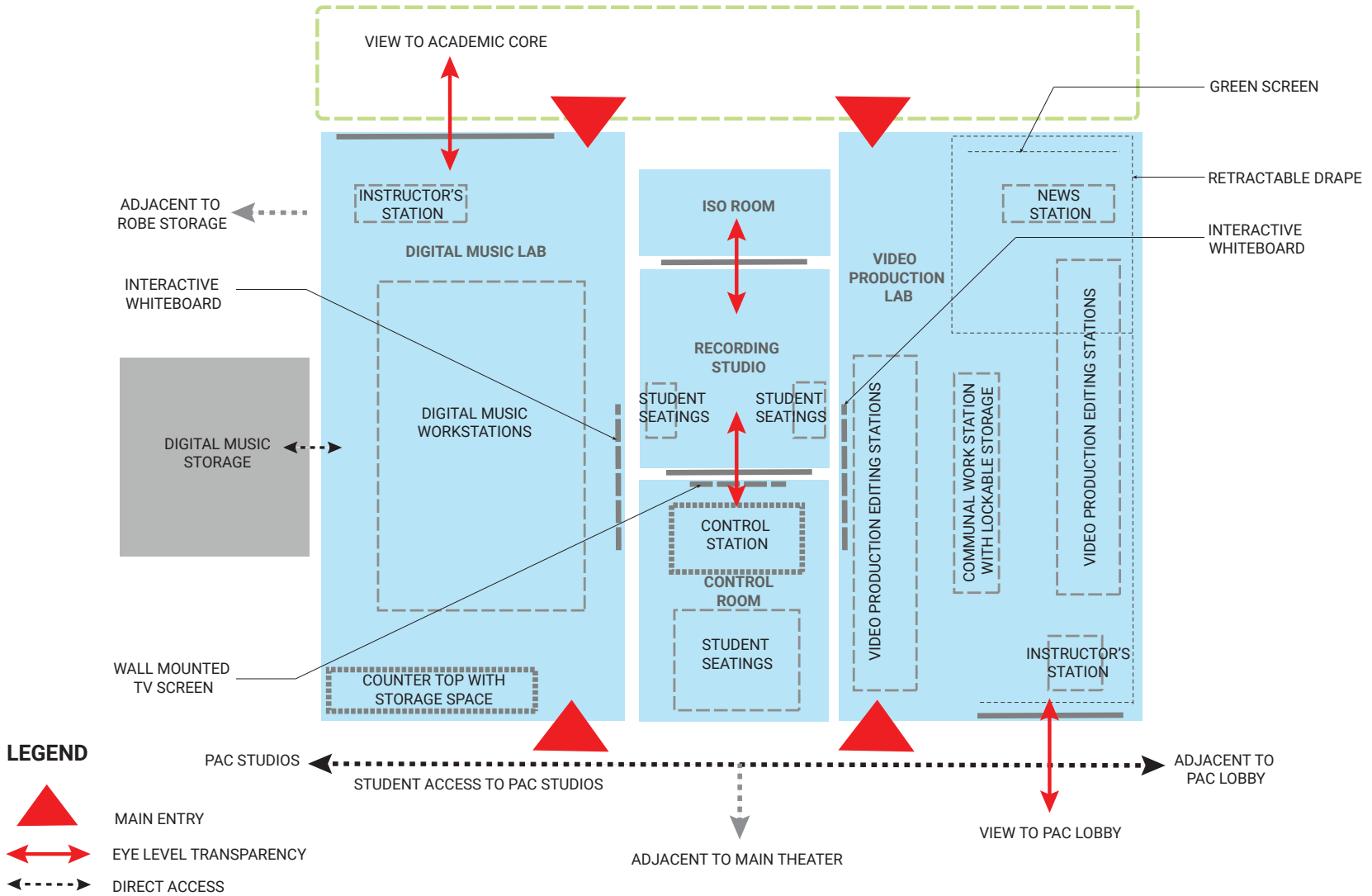
Technology / Electrical:

- Outlets for general room requirements and desk
- Telephone
- Wireless network access
- Synchronized clock system



SPATIAL RELATIONSHIPS AND ADJACENCIES

PERFORMING ARTS CENTER | CTE STUDIOS



INDIVIDUAL SPACE DESCRIPTION

DIGITAL MUSIC LAB

Spatial program:

(1) at 1350-1400 SF

Activities description:

The Digital Music Lab may include variety of new equipment such as computer keyboards, recording microphones, electronic drum kit and software for post-production, mixing and selecting sound for digital music. The lab is designed for large group, small group or individual learning and music producing activities. Students may utilize the control room and recording studio to support their production. The process of learning can be observed by other students through a large opening facing the campus core.

Adjacencies and support spaces:

- Recording Studio
- Control Room
- Digital Music Storage (support space, lockable)
- TV and Video Production Lab

Finishes and Materials:

Floor: Resilient flooring

- Walls: Painted gypsum board, vinyl wall covering over gypsum board or tackable surface, acoustical wall treatment, whiteboard wall treatment for interactive throw projectors approved by projector manufacturer, wall treatments to be floor to ceiling
- Ceiling: Suspended acoustical ceiling
- Door with view panel or sidelite
- Roller shade with visually transparent sunscreens at windows

Millwork/ Fixtures:

- Adequate storage cabinetry for staff and student supplies and equipment

Furnishings:

- (1) instructor workstation with storage below
- Desktop computer workstations for 32 students

- Mobile laptop charging carts (Digital Music Lab Storage)
- AV racks for equipment (Digital Music Lab Storage)

Technology / Electrical

- Interactive short throw projector OFCI (All wall-mounted Interactive flat panel displays and projectors shall be appropriately sized for each space)
- 1-ch wireless mic for teacher
- USB audio interface (1 teacher, 32 student stations)
- Dante Virtual Sound Card software
- Headphones
- DSP with computer control application
- Outlets for general room requirements
- Wall dual USB charging outlets
- Wireless Network Access
- Telephone
- Synchronized clock
- IT - Domain names for AV

TV AND VIDEO PRODUCTION LAB

Spatial program:

(1) at 1400 SF

Activities description:

Video and broadcast instruction and production activities. The learning and practicing of video production can be showcased and observed through the main lobby of the PAC building by the general public.

Adjacencies and support spaces:

- Recording Studio
- Control Room
- Lobby
- Digital Music Storage (support space to be shared with Digital Music Lab, lockable)
- Video Production Storage (support space, to be accessed from outside)

Finishes and Materials:

- Floor: Resilient flooring durable for lifts/ ladders to access pip grid
- Walls: Painted gypsum board, vinyl wall covering over gypsum board or tackable surface, acoustical wall treatment, whiteboard wall treatment for interactive throw projectors approved by projector manufacturer, wall panels for AV connections, wall treatments to be floor to ceiling
- Ceiling: Suspended pipe grid for production equipment
- Door with view panel
- Roller shade with visually transparent sunscreens

Millwork/ Fixtures:

- Manual drapery for lighting/ sound isolation, tied to pipe grid
- Green screen background on track

Furnishings:

- Bar-height mobile communal worktable with lockable storage below
- (1) Teacher station with storage below
- (1) News station desk
- Desk and chairs for 24 students
- (1) laptop charging cart

Technology / Electrical:

- Video feed wired from main theater
- Cameras & tripods
- Small production switcher
- Teleprompters
- 4-ch wireless microphone system
- 2-ch wireless IFB system
- Interactive short throw projector OFCI (All wall-mounted Interactive flat panel displays and projectors shall be appropriately sized for each space)
- Desktop computers for video production
- Studio lighting control system, including wiring and control devices
- Studio lighting fixtures
- Outlets to meet code

- Cord reels from ceiling for power for flexibility
- Wall dual USB charging outlets
- Wireless Network Access
- Telephone
- Synchronized clock
- IT - Domain names for AV

RECORDING STUDIO

Spatial program:

(1) at 250-300 SF

Activities description:

Small group audio recording to support video/audio broadcasting and digital music instruction and production activities. The recording studio can be accessed through both TV and Video Production and Digital Music Lab.

Adjacencies and support spaces:

- Digital Music Lab
- Video Production Lab
- Control Room to have view to both Recording Studio and ISO room
- Iso Room to be accessed from Recording Studio and have view to Recording Studio and Control room

Finishes and Materials:

- Floor: Wood flooring
- Walls: Painted gypsum board, vinyl wall covering over gypsum board or tackable surface, acoustical wall treatment, wall panels for AV connections, wall treatments to be floor to ceiling
- Ceiling: Suspended acoustical ceiling
- Door with sidelite

Millwork/ Fixtures:

- N/A

Furnishings:

- Movable chairs with backs for students/ performers

Technology / Electrical:

- Recording microphones, mic stands and cables
- (2) Dante enabled headphone amps
- (2) headphones for Foley artists
- (1) video monitor to support Foley recording
- Outlets for general room requirements
- Wireless Network Access
- IT - Domain names for AV

CONTROL ROOM

Spatial program:

(1) at 350-400 SF

Activities description:

The control room supports small group or individual training for audio recording and post-production. Students guided by teachers acting as engineers and producers learn how to set up and operate related equipment and software for tracking, mixing and post-production sessions.

Adjacencies and support spaces:

- Digital Music Lab
- Video Production Lab
- Recording Studio and Iso Room to have view to Control Room

Finishes and Materials:

- Floor: Resilient flooring
- Walls: Painted gypsum board, vinyl wall covering over gypsum board or tackable surface, acoustical wall treatment, whiteboard wall treatment for interactive throw projectors approved by projector manufacturer, wall treatments to be floor to ceiling
- Ceiling: Suspended acoustical ceiling
- Door with view panel

Millwork/ Fixtures:

- N/A

Furnishings:

- (1) recording control station with soundboard

- (1) task chair at control station
- (15) chairs for students
- Studio console desk

Technology / Electrical:

- (2) studio monitors
- DAW computer
- Avid Pro Tools software, interface and control surface
- Dante enabled microphone preamps and audio I/O's
- (1) large video screen at control station
- Outlets for general room requirements
- Wall dual USB charging outlets
- Wireless Network Access
- Synchronized clock

ISO ROOM

Spatial program:

(1) at 100-150 SF

Activities description:

Isolated audio recording space for 5-6 students to support video/audio broadcasting and digital music instruction and production activities. The Iso room can be accessed through both video production and digital music lab. The equipment and recording activity can be monitored and controlled via control room

Adjacencies and support spaces:

- Digital Music Lab
- Video Production Lab
- Control Room
- Recording Studio

Finishes and Materials:

- Floor: Resilient flooring (specify for heavier thickness)
- Walls: Painted gypsum board, vinyl wall covering over gypsum board or tackable surface, acoustical wall treatment, whiteboard wall treatment for interactive throw projectors approved by projector manufacturer, wall panels for AV connections, wall treatments to be floor to ceiling

- Ceiling: Suspended acoustical ceiling
- Soundproof door with sidelight

Millwork/ Fixtures:

- N/A

Furnishings:

- N/A

Technology / Electrical:

- Outlets for general room requirements
- Wireless Network Access

