



# Utility Pole Drone Inspection Shot List

## For New Drone Pilots

**Purpose:** Capture clear, detailed imagery of utility poles for inspection purposes. Each shot ensures all parts of the pole, including top hardware, lines, and surrounding area, are properly documented.

\\Ensure.location.settings.are.turned.on.for.drone.image.capture;

---

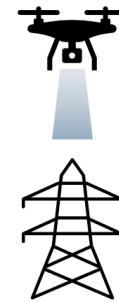
## 1. Nadir Shot (1)

**Label:** Nadir

**Description:** A top-down shot taken directly above the pole.

**Instructions:**

- Fly directly over the pole at a safe height.
- Ensure the camera is pointed straight down (90°).
- Center the pole in the frame.
- Capture a single, high-resolution photo showing the pole base and immediate surroundings.
- This shot's meta data (GPS coordinates) will be used for confirming or updating GPS coordinates of the pole.





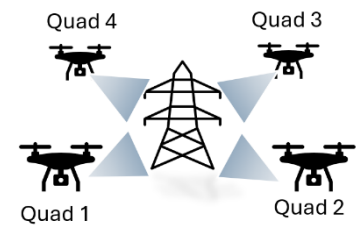
## 2. Quadrant Shots (4)

**Labels:** Quadrant 1, Quadrant 2, Quadrant 3, Quadrant 4

**Description:** Capture each quadrant of the pole at roughly the top third of the pole's height. This highlights crossarms, insulators, and hardware.

**Instructions:**

- Imagine the pole divided into four quadrants (front-left, front-right, back-right, back-left).
- Position the drone at the top third of the pole's height.
- Take a photo facing each quadrant.
- Ensure the pole is centered in the frame with all hardware visible.



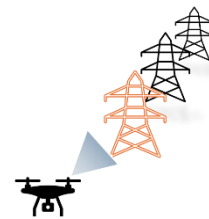
## 3. Upstream Shot (1)

**Label:** Upstream

**Description:** A horizontal shot looking along the direction of the utility line coming to the pole.

**Instructions:**

- Stand at the downstream side of the pole.
- Point the camera along the line toward the pole.
- Capture the pole and lines entering it.





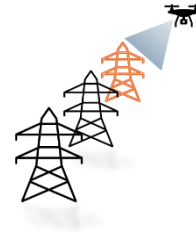
## 4. Downstream Shot (1)

**Label:** Downstream

**Description:** A horizontal shot looking along the direction of the utility line leaving the pole.

**Instructions:**

- Stand at the upstream side of the pole.
- Point the camera along the line away from the pole.
- Capture the pole and lines leaving it.



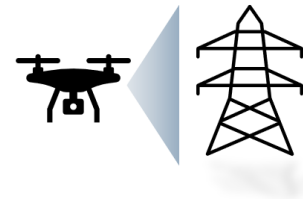
## 5. Pole Overview Shot (1)

**Label:** Pole Overview

**Description:** Shows the full pole from ground to top for context.

**Instructions:**

- Position the drone at a distance to capture the full height of the pole.
- Include surrounding environment for scale.
- Ensure the pole is entirely visible from base to top in a single frame.



## Tips for New Pilots:

- Always maintain a safe distance from live wires.
- Check drone GPS and battery before flight.
- Avoid windy conditions that may affect stability.
- Take multiple shots if unsure; clarity is critical.