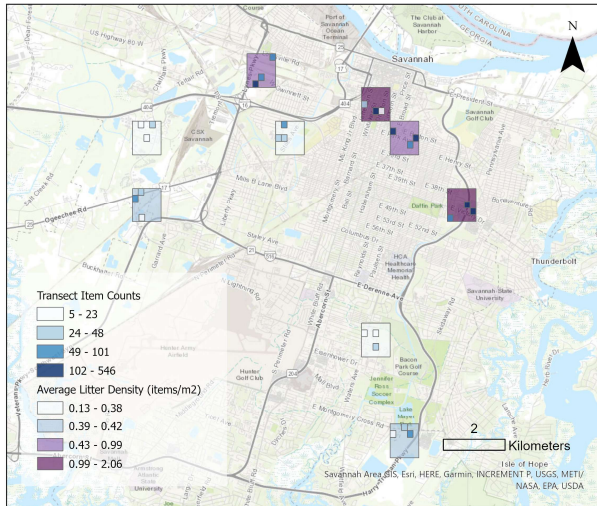
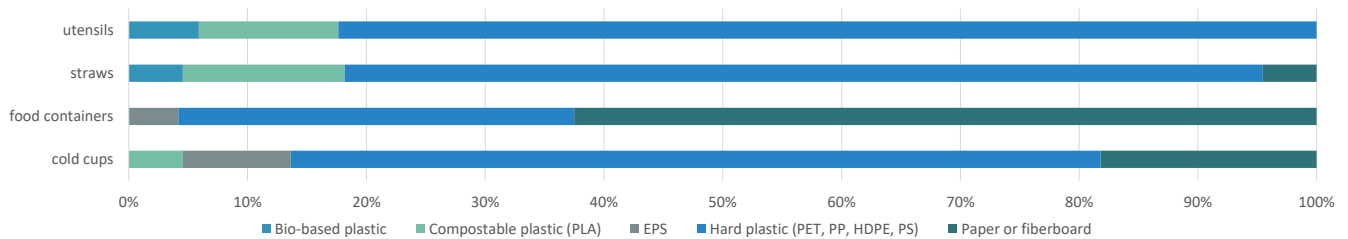


On average, there were **74 litter items** in each 100 m² transect, which is about the length of a city block.



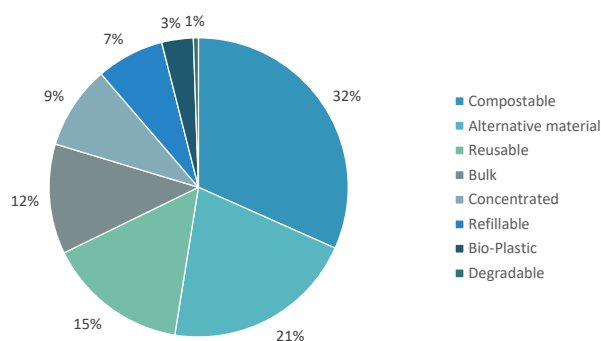
To-go food ware (cups, containers, straws, and utensils) comprised about **3.5% of the litter**. Out of 25 restaurants surveyed, most to-go food ware is hard plastic or paperboard. **8% of restaurants are using compostable or bio-based plastic** for at least one item.

Material type of restaurant to-go food ware



Out of 21 stores surveyed, **52% offered alternatives** to single-use plastic for some household or personal care products. In total, **177 alternative products** were identified. Common items included hand soap and dish soap; picnicware like cups, dinner plates, and utensils; laundry detergent and household cleaner; and sandwich bags. 89% of stores are using plastic bags.

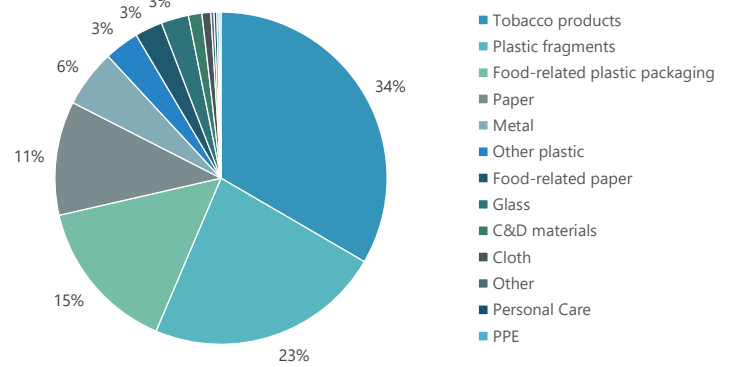
Alternative types surveyed in stores



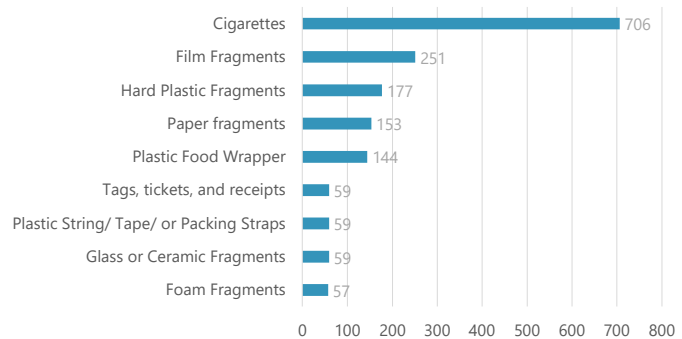
Circularity Assessment Protocol (CAP)

a holistic snapshot of a community's circularity that can provide data to reduce leakage of waste into the environment and increase circular materials management; conducted in Savannah by a team from the University of Georgia in November 2023.

Litter survey: material breakdown



Litter survey: top 10 litter items



Alternative Type	Cost compared to single-use plastic
Alternative material	123%
Bio-Plastic	50%
Bulk	-26%
Compostable	78%
Concentrated	135%
Refillable	574%
Reusable	9,612%