

CONCRETE FLOOR RESTORATION & REPAIR CAPABILITIES

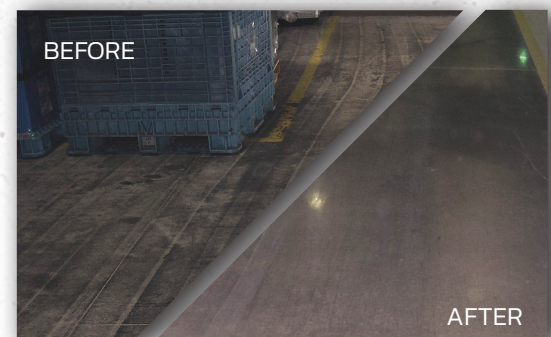
MAKE THE MOST OF YOUR SHUTDOWN TIME.

Planned maintenance and repair during shutdowns is the most efficient way to restore, upgrade, and extend the life of your concrete floors. Perfect Polish brings the crews, equipment, and expertise to handle even the toughest repairs within tight schedules—so you return to full production on time.

OUR CAPABILITIES:

POLISHED CONCRETE

- Removing existing coatings and polishing concrete to a dense, glossy finish
- Grinding existing concrete to eliminate sealers, stains, and minor imperfections, then polishing to a dense, dustproof, glossy finish
- Enhancing slip resistance while maintaining a durable and low-maintenance surface



COATINGS REPAIR

- Removing failing coatings and applying new high-performance coatings
- Sanding existing coatings and applying a durable topcoat system
- Improving slip resistance and safety in work areas

CONCRETE LEVELING

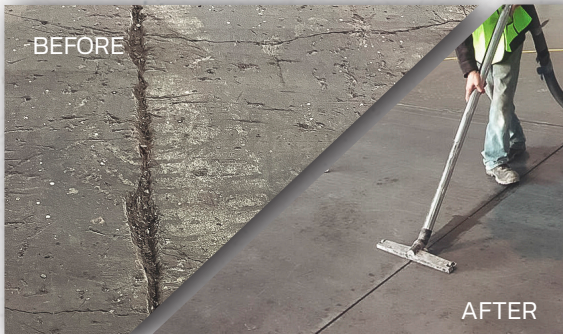
- Reducing slab movement through corrective repair methods
- Grinding down high spots and filling low spots for a level surface
- Repairing uneven concrete joints for smoother traffic areas
- Repairing delamination and spalling of the concrete surface
- LiDAR scanning, gloss meter evaluation, and surface roughness profile testing available upon request



PERFECTLY RELIABLE, ON-SCHEDULE CONCRETE FLOORING SOLUTIONS FROM COAST TO COAST

CONCRETE REPLACEMENT

- Complete concrete slab replacement, including full tear-out and repour
- Milling down existing concrete and applying topping slabs
- Profiling existing slabs and installing cementitious overlay systems



JOINT REPAIR

- Tearing out and replacing concrete joints
- Repairing spalled joints for long-term durability
- Grinding uneven joints smooth to reduce trip hazards and equipment impact

LINE STRIPING

- Removing existing line striping with precision equipment
- Installing new, high-visibility line striping for long-lasting results
- Identifying and marking walk paths, forklift traffic lanes, lay-down areas, and safety zones



WHY INDUSTRIAL FACILITIES CHOOSE PERFECT POLISH:

- Durability & Safety – Our repairs restore structural integrity and support safe operations.
- Industrial Focus – Decades of experience in manufacturing and heavy-use environments.
- Proven Process – Tracking, assessing, and repairing damage ensures long-term performance.
- Shutdown Specialists – We understand the urgency and precision required during limited downtime.
- Nationwide Reach - Perfect Polish has completed hundreds of millions of square feet of industrial repair projects across the country, bringing reliable solutions to facilities of every size.



READY TO START YOUR SHUTDOWN REPAIR WORK?

Perfect Polish has delivered hundreds of millions of square feet of industrial repair and flooring solutions, serving some of the most demanding facilities in the country. Contact Perfect Polish today to schedule a consultation and discover how our concrete repair, coating, and polishing solutions can maximize your facility's durability, protection, and long-term reliability.

PERFECTLY RELIABLE, ON-SCHEDULE CONCRETE FLOORING SOLUTIONS FROM COAST TO COAST