

Carefully read this guide prior to installing Glosswood Prefinished Timber Lining Boards.

Building Codes of Practice must always be strictly observed for undercover external timber installations. There is no warranty or guarantee offered for damage to Glosswood caused by water or moisture, including damage caused due to an incorrect installation procedure of a Glosswood Product, except as required by law. Guarantees may not apply if these guidelines are not followed

1. INSPECTION OF EACH BOARD IS REQUIRED BEFORE INSTALL

Inspect all products upon delivery. Glosswood must be notified within 7 days of any defect, damage, quantity shortage, or discrepancy from the order or quote. As damage can occur during transport, it is essential to verify that the packs received match the specified colour and finish. Should any other defect become evident after delivery, notify Glosswood as soon as reasonably possible. Glosswood must be granted access to inspect the product. Please note that timber is a natural material; variations in colour, shade, tone, texture, markings, and grain are to be expected and are not considered defects. A thorough visual inspection is required prior to installation to ensure the product meets your expectations, as Glosswood cannot accept responsibility for concerns raised after installation.

2. ACCLIMATISE THE BOARDS

Condition boards to room temperature and humidity by removing boards from packaging and stacking 150mm off floor on bearers not more than 450mm apart. Glosswood recommend a period of 2-3 days. Expose all surfaces to the installation environment.

NOTE: Acclimatizing should not be undertaken during very wet or very dry periods of weather.

3. USE CORRECT TOOLS & SAFETY PROCEDURES

Required tools: Set square, tape measure, spirit level, string line, fine-tooth drop saw, electric drill, brad gun, hand plane, hammer, nail punch, brads or panel pins (25-35mm-long wire nail), adhesive (Bostik HP or Ultra Set), caulking gun, sealer (See Step 6), battens. **Health & Safety:** Wear a dust mask, glasses and ear protection when using power tools and sawing. Persons attempting installation should have some natural aptitude or training. Methods described in this guide are not necessarily the only satisfactory procedures.

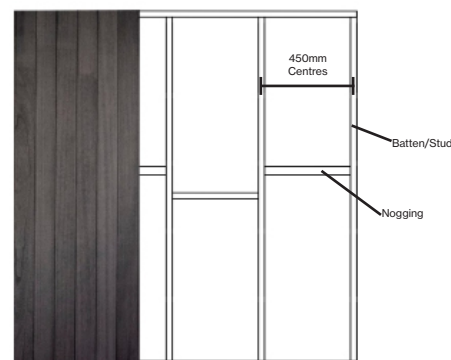
4. PREPARE THE SURFACE

Boards can be fixed to a flat, straight surface such as rafters, joists, trusses, wall framing (stud walls) or battens attached to masonry walls (battens must be spaced 450mm apart). For existing walls and ceilings, Glosswood also recommends installing battens.

Note: Boards must be installed over a batten or block at all join points.

5. PREPARE THE BOARDS

Glosswood supply the boards over-length to allow for trimming of both ends when butt-joining. Each board must be freshly end-docked, which removes excess coating and machine marks on all board ends, face-cut on a clean 90-degree angle. Glosswood also recommends under-cutting the butt-joint ends on a 3° degree angle, then resealing for a perfect closed finish between the butt-joints. To achieve a clean cut on a finished surface, use a multi-tooth blade and cut with the face of the board finished side up.



6. END-SEAL THE BOARDS

It's mandatory every end-joint or fresh cut is resealed. Ensure board ends are completely sealed to prevent moisture ingress.

SATIN BOARDS Glosswood recommends using an end-sealer of a similar colour i.e. Bondall Monocel Gold Clear Timber Varnish. The other option is to use a bathroom/window Silicon Sealer in a matching colour to your board ends. End-seal and wipe face clean with a damp cloth if any sealant gets on the face of the board.

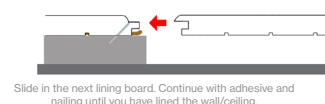
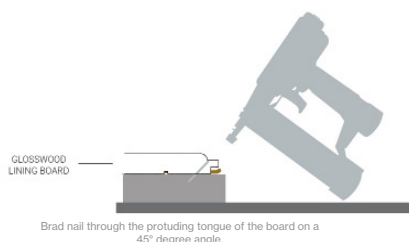
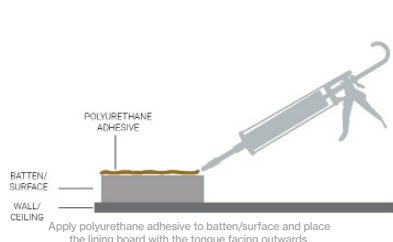
MATTE BOARDS Glosswood supply a 250ml tin of penetrating oil in the same Matte colour as the boards at time of purchase or on request at no extra cost. Ensure all board ends are cut on a 3 degree angle to ensure a tight closure of the boards on the board face. Do not over-coat the face as it will alter appearance.

7. USE POLYURETHANE ADHESIVE & WEAR GLOVES

Glosswood recommends using Bostik HP or Ultra Set. If using a similar adhesive product, refer to the manufacturer's directions for use. One 600mm tube will cover 8-10sqm of battens. The adhesive acts as a primary fixing of the board to the ceiling/wall. Glosswood suggests using enough so that glue oozes out when the board is put in place. Wear disposable gloves while installing the boards to prevent glue, dirt and colour transfer. If hand and finger marks occur, refer to Maintenance & Care (below). **NOTE:** Particular care needs to be given when installing the colour White, as it is more evident if glue and dirt is transferred onto this colour.

8. SECRET-NAIL THE BOARDS

Secret-nail the board through the tongue (nails are hidden by the groove of the next board) using a Brad gun and 25-35mm-long wire nails (also called brads). This will assist in clamping the board into position while the adhesive cures. Commence with the tongue facing outwards and nail at a 45° angle through the board near the base of the tongue (Refer to installation drawing). **DO NOT** face-nail the Glosswood boards (this will fracture the coating and could allow moisture in, which may lead to delamination and create conditions that promote the growth of mould and spores).



9. OFF-SET THE BOARDS AND LEAVE EXPANSION GAPS

Offset or stagger the boards to avoid board joints lining up in a row. Glosswood lining boards consist of two boards joined to provide the 3600mm set length. The minor lamination join appears approximately in the middle of the board and installers should stagger this line where possible. Check progressively with a spirit level to ensure a straight, level finish. Leave expansion gaps for natural timber expansion between the tongue and groove at approx. 2mm in thickness. Expansion varies depending on climate and application, but Glosswood recommends a minimum of every three to five boards. Expansion gaps are good practice for internal installation and essential for exterior applications (especially in moist and high-humidity locations, i.e. Queensland).

10. FIXING THE TRIM

Glosswood offers quad or coverstrip trims in the matching colour of the timber lining board. Glue or nail trims into place to cover the space expansion gaps left between wall and ceiling. When nailing Satin trims, use a bathroom/window Silicon Sealer in a matching colour to your board ends.

MAINTENANCE & CLEANING GUIDE

CLEANING THE SATIN BOARDS

Clean the Lining boards on a regular basis to remove dust, cobwebs and sea salt residue.

SATIN FINISH: Glosswood recommend a lint-free cloth for cleaning. The accumulation of dirt and salt can dull the surface, as well as store moisture and result in coating damage. To clean or remove hand/finger marks, use a damp cloth (tightly wrung out) and wipe the surface clean. Do not over saturate the cloth when cleaning. DO NOT rub or use high-pressure sprays.

MATTE FINISH: Glosswood recommends a soft bristle brush. The accumulation of dirt and salt can dull the surface, as well as store moisture and result in possible coating damage. To remove the appearance of any white residue, heat the underside of the ceiling with a hair dryer then wipe with a clean, lint-free cloth. DO NOT use water or a solvent-based cleaner, it may change the appearance of the boards.

PERFORM REGULAR CHECKS

Inspect regularly for any potential change in appearance as this could indicate water and moisture damage. If you notice any stains, colour changes, peeling coatings and mould, take immediate precautions against ongoing damage. If you observe any moisture on your lining boards, take immediate action to stop ongoing exposure as damage will most likely occur after prolonged moisture exposure.

MOULD ISSUES

Biocides are added to all our coatings to assist in combating mould growth. However, surface mould may appear if moisture and air-borne mould spores are present at your location. Moisture, dirt, dust, fly specks, insects and biofilms (often caused by outdoor barbecues) provide nutrients that assist mould spores to attach and multiply. Avoid this with regular maintenance and cleaning.

DO NOT use high-pressure spray units. Semi-tropical or mountainous locations with excessive rain and 60%+ humidity are more prone to mould and fungus, so be particularly vigilant in these regions. If you have a mould issue, research online for non-solvent and non-abrasive cleaning methods for your region.

ACCEPTABLE CHARACTERISTICS

Glosswood embraces the natural variation of timber in colour, tone and grain; Glosswood recommends blending packs as there may be tonal variation within your consignment. Glosswood lining board ranges do have factory lamination join lines approximately halfway on the board. The installer should stagger this joint during the installation process to maintain design integrity.

MOISTURE CONTENT

Timber panelling is usually supplied at an average moisture content of 11-13%. This moisture content suits coastal areas (i.e. Queensland) where the average moisture content of internal timbers is about 12%. Where conditions are drier (i.e. inland Queensland or air-conditioned buildings), the average moisture content is 8-12% which is why acclimatising the boards is important prior to installation.

MOISTURE EXPOSURE

Glosswood lining boards are sealed on all four sides with either a Matte or Satin coating. This superior coating helps to ensure greater stability of the Glosswood product, but is not to be considered moisture-proofing. When installing in a ceiling discuss with your builder or installer the use of a waterproof membrane between the ceiling and your roof, especially if it is a metal roof (these are prone to condensation in the roof cavity). Waterproof membrane insulation also assists in avoiding water damage caused by roof and tile problems. Do not install where water or moisture exposure may occur or could be considered a problem, including pool and spa locations. Discuss application with a qualified builder or similarly qualified person. **NOTE:** Glosswood is not responsible for installer's advice.

PREVAILING WEATHER

If designing a new outdoor area, consider 'pitched roof end infills', 'barge boards', 'external walls' and/or 'protective curtains' to protect the boards from prevailing weather. If retro-fitting, ensure the boards are installed in a protected, undercover outdoor space. When installing in these applications, always face the groove away from the direction of weather (i.e. groove faces the house wall).

CODES OF PRACTICE

There is no warranty or guarantee offered for damage caused by water or moisture exposure or due to lack of regular cleaning, including damage caused by incorrect installation except as required by law. The use of chemicals or high-pressure sprayers are not to be used in the cleaning process. Customers must comply with these guidelines when installing and using Glosswood and carry out cleaning on a regular basis.

Advice is of a general nature and does not take into account individual circumstances. Check for updated installation information at: www.glosswood.com.au

All care has been taken in preparing instructions, however no responsibility for loss or accident, howsoever caused, is accepted.

The following tips should only be used as a general guide. Follow the National Construction Code (NCC), Australian Standards and best practises where required. Discuss the following with a qualified builder or architect prior to installation:

SITE CONSIDERATIONS

Local climate and environmental factors need to be considered, such as:

- Humidity and temperature
- Rainfall and prevailing weather
- Level of exposure to direct sun

PROJECT CONSIDERATIONS

- Client commitment to long term maintenance
- Accessibility of the product
- End Sealing the boards
- Fixing methods
- Direction of boards (to prevent water pooling in shiplap joint)
- Allowance for expansion

WATERPROOFING

All junctions with other surfaces need to be carefully considered. Sarking needs to be discussed with the builder/architect.

MOISTURE CONTENT & TIMBER EXPANSION

Atmospheric conditions like temperature, humidity and weather exposure can adjust the moisture content of the timber. Expansion gaps must be considered to allow for the expansion and contraction of the timber. Consider the following:

- Movement rate of the timber
- Weather Considerations
- Exposure to the elements
- Waterproofing and water runoff
- Weather protection (i.e. the direction of boards, eaves etc)

MAINTENANCE

Speak to the builder as to whether Glosswood is suitable for the application. Regular maintenance is required and must be discussed prior to installation. This includes cleaning the boards, performing regular checks and addressing any possible moisture ingress.

The Glosswood Installation & Maintenance guide can be referred to for additional information and full maintenance requirements of the prefinished matte stains.

TRIMS

Trims can be used on the perimeter of the boards to hide expansion gaps.

CODES OF PRACTICE

There is no warranty or guarantee offered for damage caused by water or moisture exposure or due to lack of cleaning, including damage caused by incorrect installation except as required by law.

Advice is of a general nature and does not take into account individual circumstances.

Please feel free to contact the Glosswood Team:

1300 882 064

www.glosswood.com.au

info@glosswood.com.au