



Edmonton Petroleum
Golf & Country Club

www.PetroleumGolf.ca

MEMBER EXPERIENCE

2025/2026

An aerial photograph of a lush green golf course. In the center, there is a small, irregularly shaped pond surrounded by tall evergreen trees. A winding path or fairway leads from the foreground towards the background. The sky is overcast with soft, grey clouds. The overall scene is peaceful and scenic.

Best Tee Access
in the City

Welcome to The Petroleum Golf & Country Club, where excellence meets community. We are dedicated to providing our members and their families with a premier golfing experience in an inclusive and welcoming environment.



WELCOME *to* *the* PETROLEUM CLUB

Experience Golf at Its Finest *A Community Built on the Love For The Game.*

Nestled in the heart of Edmonton, the Edmonton Petroleum Golf & Country Club is more than just a golf course—it's where the essence of golf meets luxury and community. Designed by PGA Professional Mark McCumber, our Par 72 championship course, completed in 1993, offers a walkable, scenic, and private retreat for golf enthusiasts. With over 7,000 yards of meticulously maintained fairways, contoured greens, and strategically placed bunkers, our course is as challenging as it is welcoming, catering to golfers of all skill levels.

Beyond the course, our clubhouse provides a sanctuary of comfort and elegance. Relax in our tastefully appointed lounge and dining room, or unwind on the patio, where you can watch the final golfers of the day chase the setting sun up the 18th fairway.

Our unrivaled practice facilities allow you to refine every aspect of your game. From two dedicated chipping greens and a short game area with bunkers to a spacious driving range and a full-length three-hole practice loop, your preparation is limitless. Our expert Golf Professionals are on hand to offer personalized lessons, fittings, and access to the latest merchandise and equipment, ensuring your game is always at its peak.

As one of Edmonton's most exclusive membership-based golf clubs, we pride ourselves on providing an exceptional experience. Enjoy world-class golf, outstanding dining, unparalleled practice facilities, and a community that feels like family. At Edmonton Petroleum Golf & Country Club, every round is more than a game—it's an experience.



MEMBERSHIP BENEFITS

BEST TEE ACCESS IN THE CITY



www.PetroleumGolf.ca



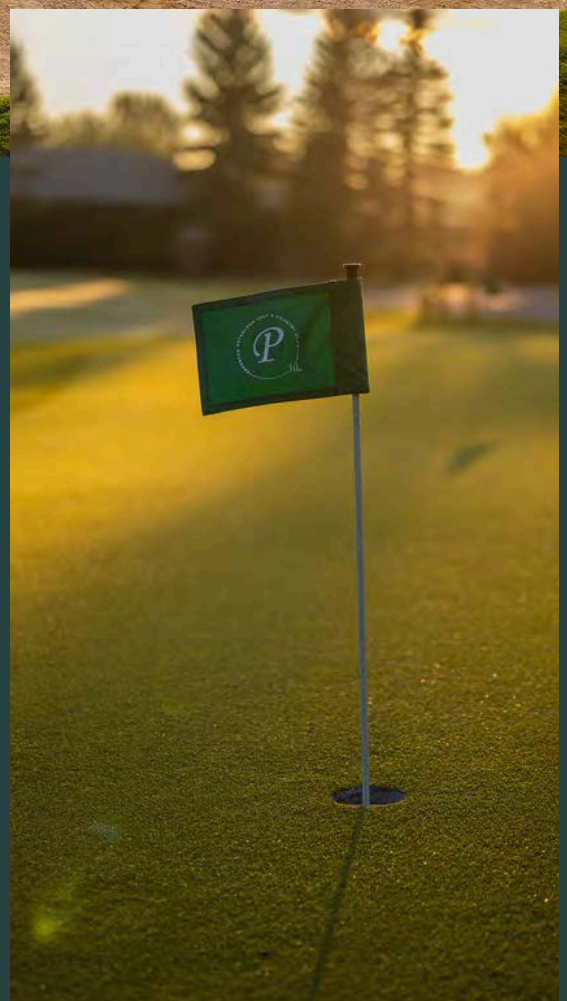
Best Tee Access

Your Gateway to Unmatched Golfing Excellence

Unparalleled Tee Access: Our members enjoy the best tee access in the city, with no restrictions to hold you back. Whether you prefer early morning rounds or twilight sessions, you have the freedom to book your tee times up to **14 days in advance**, ensuring you can plan your perfect golf schedule with ease.

Locker Privileges:

- Shareholder Membership: Includes a complimentary locker, providing you with a secure and convenient space to store your belongings.
- Unrestricted Membership: Lockers are available for an annual fee of \$110 plus GST, allowing you the option to add this convenience to your membership at any time.



Club Storage

For both Shareholder and Unrestricted Members, we offer annual club storage at \$175. This service ensures that your clubs are always safe, maintained, and ready for your next round, providing peace of mind and added convenience.

An aerial photograph of a golf course during the golden hour. A large, irregularly shaped pond is in the upper right. A wide, light-colored practice area or fairway runs diagonally across the center. Several smaller sand traps and green areas are visible. A line of trees is on the left side. The overall lighting is warm and soft.

THE MEADOW

Designed to offer members an unparalleled experience in honing their skills.

OUR PREMIER PRACTICE AREA



Three-hole Practice loop with a Full-Length Par 3, Par 4, and Par 5

This state-of-the-art facility features a 400-yard driving range, allowing golfers to practice their long shots with ease. The expansive grass tee deck provides ample space for multiple users, ensuring a comfortable and unrestricted practice environment. Additionally, The Meadow includes a private coaching deck, perfect for one-on-one lessons with our skilled golf professionals. For those looking to simulate real course conditions, The Meadow boasts a three-hole practice loop with a full-length Par 3, Par 4, and Par 5, making it ideal for a quick game or focused practice session.

Second to None Practice Facility

Beyond The Meadow, our practice facilities are second to none. The short game area includes a chipping green, putting green, and realistic bunkers, allowing members to perfect their approach shots and putting techniques. Our comprehensive setup ensures that every aspect of your game can be fine-tuned in a professional setting. Whether you are a seasoned golfer or just starting out, our facilities provide the perfect environment to improve your skills and enjoy the game.



A
Perfect
Practice
Day



MEN'S LEAGUE



OUR MEN'S LEAGUE IS AN EXCITING AND COMPETITIVE WAY FOR MEMBERS TO ENGAGE WITH THE CLUB'S VIBRANT COMMUNITY WHILE ENJOYING WEEKLY GOLF. SPANNING *14 WEEKS*, THE LEAGUE OFFERS REGULAR TEAM PLAY IN A *2-MAN NET BEST BALL MATCH PLAY FORMAT*, WITH PARTICIPANTS COMPETING FOR TEAM POINTS EACH WEEK.

- **Yearly Fee-** \$165/player
- **Optional Weekly Game Entry:** \$10 (includes \$5 for the Deuce Pot and \$5 for Skins/Proxies, alternating each week)
- **Scoring & Participation:** Teams compete for 1 point per hole, with extra players encouraged to join as spares. Teams can have up to 7 players, allowing for additional points.



- **Prizes:** Monthly winners are awarded, with the top teams receiving Golf Shop credits. At the end of the season, the team with the highest Participation Points will also receive a year-end prize.
- **Hole-in-One Prize:** A \$2,000 cash prize is up for grabs for a hole-in-one on Hole #5 (minimum 140 yards).

League play is coordinated using Golf Genius for scoring, with weather updates sent by 1 PM on Wednesdays.

The Men's League offers a great mix of competition and camaraderie, with post-round drinks and a curated buffet to enjoy after your round.

Womens League



Our Women's League offers an inviting and vibrant community where female members of all skill levels can enjoy the game of golf, build friendships, and create lasting memories. The league provides opportunities to play every Tuesday from May through September, with flexible tee times available at 9:00 AM, 3:00 PM, and 5:00 PM. Whether you're looking to play a full round or just 9 holes, there's a time slot that fits your schedule.

Each week, we organize a variety of fun and engaging games to keep things exciting. Participants can choose to join in the weekly competitions or simply enjoy a casual round of golf with friends. For those who love a challenge, we offer a variety of tournaments and events throughout the season, including but not limited to:

- Opening and Closing Tournaments
- Women's Season-Long Match Play
- Women's Member Guest Tournament
- Club Championship
- 215 Street Challenge

Additionally, our Eclectic Board, 5's on 5's and Birdie Tree prizes offer ongoing recognition for your achievements throughout Women's League Events, giving you the opportunity to shine each week.

Beyond the course, the Women's League is a great way to stay connected and socialize with fellow members. Whether it's enjoying lunch on the patio after your morning round or joining others for dinner after a fun day on the course, the Women's League is a perfect way to enhance your club experience.

JUNIOR ACCESS

UNLOCK THEIR POTENTIAL WITH OUR

DEPENDENT JUNIOR MEMBERSHIP

Are you ready to take your golf
game to the next level?



At The Petroleum Club, our Junior Membership is designed to inspire young golfers, offering unparalleled access to top-tier facilities, expert coaching, and a vibrant community.

Whether you're just starting out or aiming to compete at the highest level, our program provides everything you need to grow your skills, build lasting friendships, and enjoy the game like never before.



YOUTHFUL. INCLUSIVE. ACCESSIBLE.



Dependent Junior Membership

Junior members can enjoy booking tee times up to 14 days in advance for non-prime time during weekdays, and 7 days in advance for non-prime time on Fridays, and weekends/holidays.

For prime time (11am-5pm on Fridays and before 2pm on weekends and holidays), juniors are welcome to play when accompanied by an adult member.

Progressive Golf Instruction:

**ADDITIONAL FEE

- Level 1: Engage in fun and educational golf camps.
- Level 2: Participate in skill-enhancing clinics.
- Level 3: Receive personalized coaching from experienced instructors.

Exclusive Golfing Privileges:

Bring up to 3 guests for just \$50 (NPT) per guest (18 holes).

Junior Golf League:

Join our vibrant Junior League, completely free of charge.

Competitive Opportunities:

Take part in Junior Golf Tournaments, Club Championships, and Interclub Qualifiers.

Practice Facility Access:

Unlimited access to the Practice Facility anytime, perfect for honing your skills.

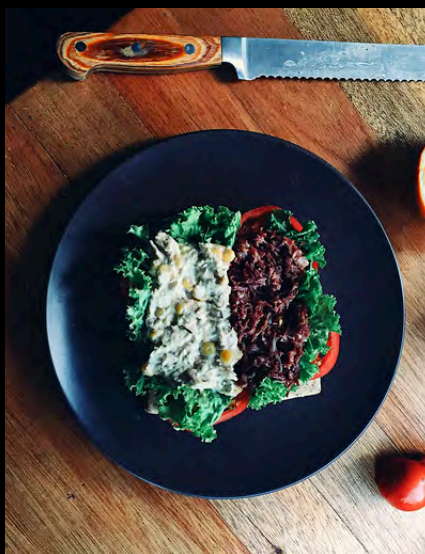
Golf Canada Handicap App:

Enjoy full access to the Golf Canada Handicap App, helping you track your progress and improve your game.



EXCEPTIONAL DINING

AT THE EDMONTON PETROLEUM GOLF & COUNTRY CLUB, OUR DINING EXPERIENCE IS AN INTEGRAL PART OF THE CLUB'S COMMUNITY AND SOCIAL ATMOSPHERE. OUR RESTAURANT AND PATIO OFFERS A RELAXED SETTING WHERE MEMBERS CAN ENJOY A DIVERSE RANGE OF CULINARY DELIGHTS.



WHETHER YOU'RE STOPPING IN AFTER A ROUND OF GOLF OR JOINING FRIENDS AND FAMILY FOR A SPECIAL EVENING, OUR RESTAURANT ADDS EXCEPTIONAL VALUE TO YOUR OVERALL CLUB EXPERIENCE, MAKING EVERY VISIT SOMETHING TO LOOK FORWARD TO.



MUST TRY

One of the highlights is our Feature Menu, which changes every two weeks throughout the season. Each menu is thoughtfully crafted with a new theme, offering members a unique dining experience with every visit. From international flavors to seasonal favorites, our chefs use only the freshest ingredients to create memorable meals that enhance your time at the club.





The Social Side of The Edmonton Petroleum Golf & Country Club



At The Edmonton Petroleum Golf & Country Club, our vibrant social calendar is just as important as our exceptional golf offerings. Becoming a member means more than just access to the course—it's about being part of a thriving community where lasting friendships are built, and memories are made both on and off the fairway.

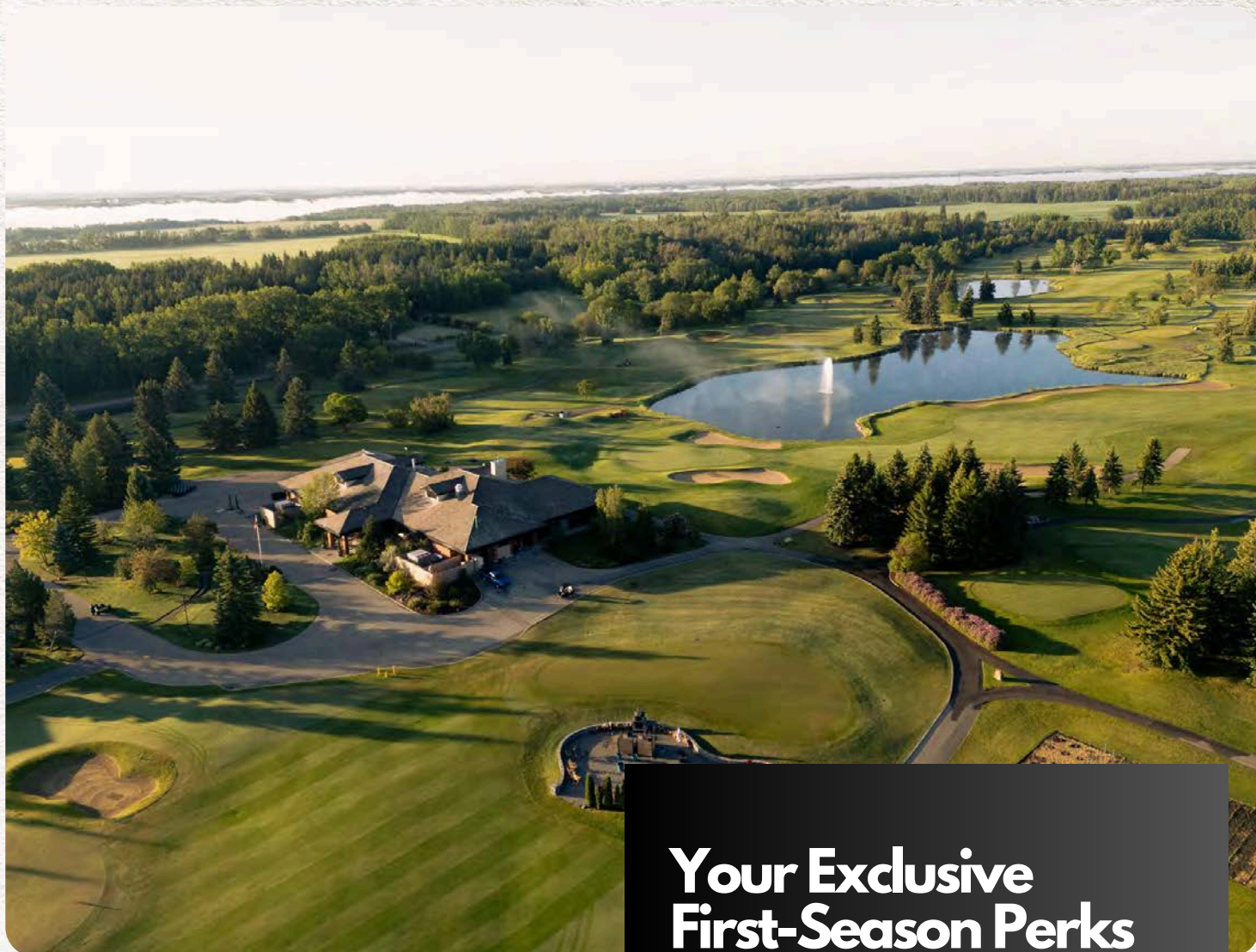
We host a variety of year-round events that cater to all interests, including:

- Exclusive Dinners & Wine Tastings
- Indulge in seasonal gourmet meals and curated wine pairings during our popular dining events.
- Holiday Celebrations & Family-Friendly Events
- Bring the whole family to our festive gatherings, such as the Family Christmas Party, Halloween Pumpkin Carving, and Easter Brunch. There's something for everyone to enjoy!
- Themed Socials & Cocktail Parties
- Meet fellow members and connect at our themed events, including the Shareholder Cocktail Party and other seasonal celebrations.
- Friendly Competitions & Game Nights
- Whether it's a trivia night, a poker tournament, or a glow golf challenge, our social events offer plenty of ways to have fun and unwind.
- Year-Round Dining
- From cozy Sunday dining to our special Prime Rib Dinners, the club provides a welcoming environment to relax with friends and family after a day on the course or after participating in one of our winter activities.



The Edmonton Petroleum Golf & Country Club is not just a place to golf—it's a place to gather, socialize, and enjoy a strong sense of community.

It's a Community that is Built on the Love for the Game.



Your Exclusive First-Season Perks

(Pay in Full to Unlock)

Becoming a Shareholder at Petroleum Club isn't just about joining a golf course—it's about becoming part of a tight-knit, exclusive community built on the love of the game. When you commit to full Shareholder status upfront, you unlock unmatched first-season-only incentives that ensure you get the absolute best experience from day one.

THE SHAREHOLDER ADVANTAGE

\$500 for the Share

\$500+GST for the Transfer Fee

\$15,000+GST for the Entrance Fee

Member Dues of **\$6,760+GST** Apply



FULL COMMITMENT

SHAREHOLDER

FULL FIRST-SEASON BENEFITS

VIP Guest Experience – 6 Complimentary Guest Passes

→ Share Your Private Club Experience – VIP Guest Access

Season Cart Pass – Ride in Comfort, Every Round (40 single cart passes)

→ Private Club Perk – Luxury Cart Access & Alternative Rides

Complimentary Tournament Entry – Guaranteed Access to Sold-Out Events

→ Priority Entry to Exclusive Tournament Championships

Unlimited Golf Simulator Access (Winter Season Only)

→ Year-Round Golf, No Off-Season – Your Private Indoor Golf Access

Pro Swing Analysis – Get Fitted for Your Best Game

→ Elevate Your Game – Private Lesson & Club Fitting with a Golf Pro

Waived Food & Beverage Minimum

→ Freedom to Dine, No Obligations – Enjoy Our Culinary Experience

Corporate Sponsorship Opportunities – Promote Your Business

→ Exclusive Shareholder Branding & Business Exposure

Junior Camps – Inspire the Next Generation of Golfers

→ Private Junior Golf Coaching – Develop the Next Champion

Exclusive Wine Club Membership (3 Months)

→ Indulge in Luxury – VIP Access to Our Elite Wine Club

10% Off Additional Guest Pass & Cart Pass Packages

→ Exclusive Member Pricing on Premium Club Experiences

EXCLUSIVE FULL PAYMENT
SHAREHOLDER PERKS

Your First Season Includes:

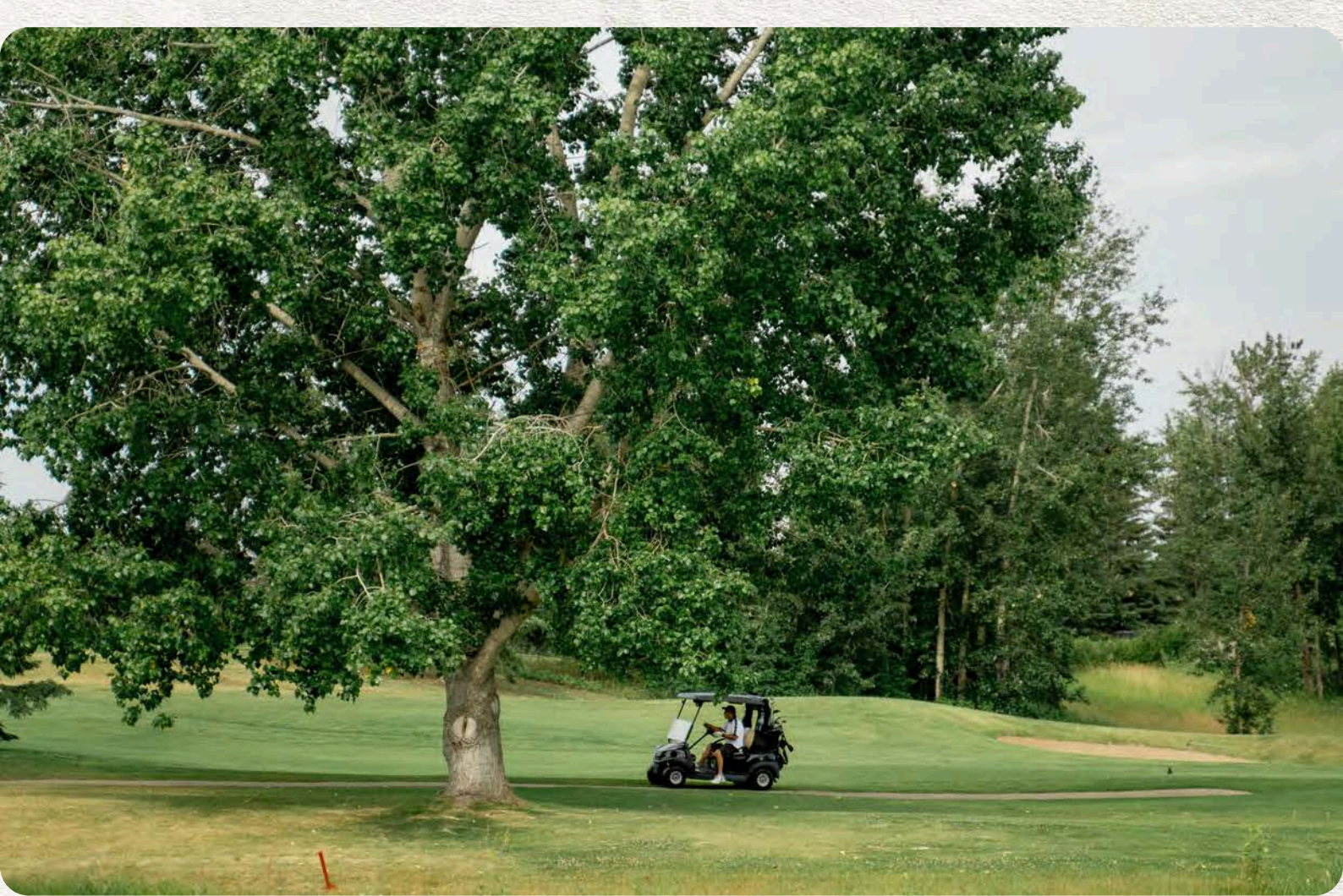
When you commit to becoming a Shareholder at our club, you're not just joining a golf course—you're becoming part of a community of passionate golfers who share your love for the game. To welcome you into this network of like-minded members, we're offering unmatched perks that will make your first season truly exceptional.

Complimentary Guest Passes – Share the Experience

This is your club, and what better way to experience your first season than by inviting your friends or family to join you on the course? With up to **six** complimentary guest rounds, you can start your day warming up on our top-of-the-line practice facility, perfect your short game on our pristine putting greens, or challenge yourself on the 3-hole loop before heading to the first tee.

Whether you're spending a relaxed afternoon on the fairways or hosting a friendly competition, these guest passes let you share the best of your new golf home with those who matter most.





Season Cart Pass – Cruise in Luxury, Play Without Limits

Why walk when you can ride in style? Your Season Cart Pass (40 single cart passes) unlocks effortless luxury on the course, giving you access to premium GPS-equipped carts designed for ultimate comfort and convenience. Track your yardages, monitor pace of play, and glide smoothly from tee to green, all while enjoying the perks of a private club experience.

Whether it's hoverboards for a futuristic spin or golf scooters for a fast, fun way to navigate the fairways.

Complimentary Tournament Entry – Immerse Yourself in Club Life

Some of our most sought-after tournaments fill up in no time—but as a Shareholder, you're guaranteed a spot. Gain complimentary entry into club favorites like the **Men's Member-Guest, Petroleum Club Cup, and Club Championship**, where competition, camaraderie, and exceptional event experiences come together.

Whether you're testing your skills, meeting fellow members, or simply enjoying the private club atmosphere, these tournaments are your gateway to becoming an integral part of our golf community.



Unlimited Golf Simulator Access for Winter – Keep Your Game Sharp Year-Round

Who says golf is only a summer sport? As a first year shareholder, you'll have unlimited access to our state-of-the-art golf simulators, ensuring your game stays sharp even when the course is covered in snow. Work on your swing with high-tech analytics, challenge friends to a round at virtual versions of world-famous courses, or simply enjoy the social atmosphere while keeping your competitive edge. Our simulators offer the ultimate winter golf experience, making the off-season feel like it never even started.

Club Fitting with a Golf Pro – Get the Right Gear, Play Your Best Game

The right clubs make all the difference. As a first year shareholder, you'll have access to a personalized club fitting session with one of our Golf Pros, ensuring that every club in your bag is tailored to your swing, stance, and playing style. Whether you're looking for more distance, better accuracy, or a custom set that feels like an extension of you, our expert fitting experience will have you playing with confidence and maximizing your potential every time you step onto the course.



Corporate Sponsorship – Showcase Your Business

As a first year shareholder, you have the exclusive opportunity to promote your business to a highly engaged, like-minded community through full sponsorship at Men's Night events.

Junior Lessons – Inspire the Next Generation of Golfers

For shareholders with families, this is the perfect way to introduce your kids to the game. Our season-long junior lessons, led by professional instructors, help young golfers develop skills, confidence, and a love for the sport in a fun, supportive environment. It's more than just lessons—it's a chance for them to connect, grow, and become part of the club's next generation.



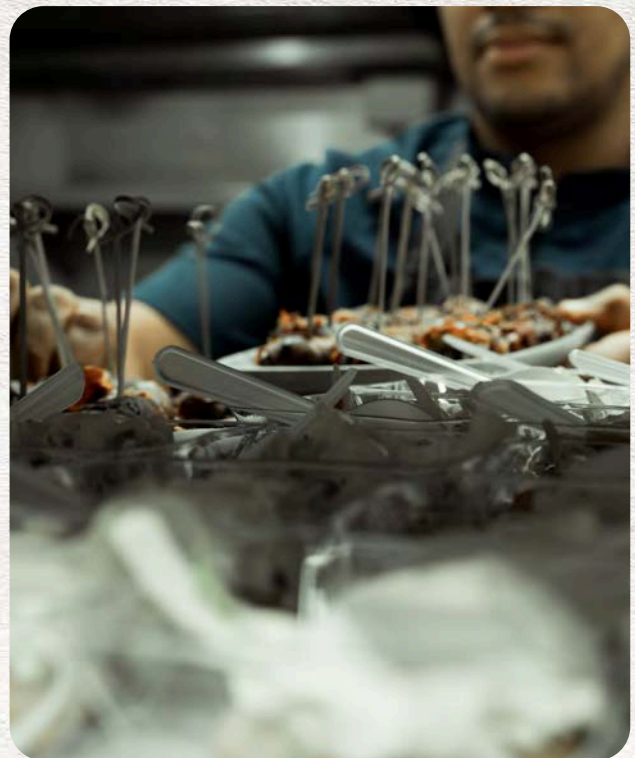
Exclusive Wine Club Membership

As part of your Shareholder Advantage Package, you'll receive a three-month membership to our exclusive Wine Club—a premium experience designed for true wine enthusiasts. Each month, you'll enjoy a curated selection of six exceptional bottles, personally chosen by our in-house sommelier. From bold reds to crisp whites, every delivery offers the chance to discover new favorites and indulge in a tasting journey that's both refined and social.

Waived Food & Beverage Minimum for your First Season

At our club, dining is more than just a meal—it's an experience. From post-round drinks on the patio to exclusive member events, our culinary offerings are a key part of the club lifestyle. As a shareholder, you typically commit to a seasonal Food & Beverage minimum of \$900 spend, but for your first year, we're waiving that requirement.

This isn't a credit—it's the removal of an obligation. You'll have the freedom to enjoy our dining at your own pace, knowing that every visit is about the experience, not about meeting a minimum.





SHAREHOLDER ADVANTAGE

PREMIUM ACCESS | COMMUNITY-FIRST
BUILT FOR THOSE WHO COMMIT



ABOUT THE ADVANTAGE

The **Shareholder Advantage** is designed for individuals ready to fully invest in the Petroleum Golf Club experience from day one. This category rewards new shareholders who **pay the full \$15,000 Shareholder Entrance Fee upfront**, unlocking a suite of **first-season** perks curated to elevate your membership experience.

From waived food & beverage minimums to complimentary guest passes and exclusive access privileges, this membership is ideal for those who value full access, immediate belonging, and exceptional golf without restrictions. It's our way of saying, you're all in, so are we.

YOUR FIRST SEASON:

- ✓ 6 Complimentary Guest Passes
- ✓ Season Cart Pass (40 Single Carts)
- ✓ Complimentary Tournament Entry
- ✓ Free Golf Simulator Access
- ✓ Swing Analysis with a Golf Pro
- ✓ Waived Food & Beverage Minimum
- ✓ Junior Lessons for Dependant
- ✓ 10% Off Guest Pass & Cart Pass Packages
- ✓ Wine Club Entry (3 Months)

WHO IT'S FOR:

Golfers ready to commit. Members who want everything the club has to offer, right from the start. Those who see value in premium access, meaningful perks, and being part of a club that respects commitment with something in return.

Entrance Fee: \$15,000 + GST
(Paid in Full at Signing)

Share Fee: \$500

Transfer Fee: \$500 + GST

Annual Dues: \$6,760 + GST

Capital Sustainability Fee: \$90+GST/month

Food & Beverage Minimum: \$900/Year
(Waived First Year Only)



SHAREHOLDER PAYMENT PLAN

OWNERSHIP WITH FLEXIBILITY | BUILT FOR
LONG-TERM COMMITMENT



ABOUT THE SHAREHOLDER PAYMENT PLAN

The Shareholder Payment Plan is designed for individuals who intend to become Shareholders of the Petroleum Golf Club and prefer to complete the \$15,000 Shareholder Entrance Fee through a structured payment schedule.

During the payment plan period, members enjoy full playing privileges and access to the Club, with two specific exceptions outlined below. Full Shareholder status is granted once the entrance fee has been paid in full. This option does not include Shareholder Advantage incentives and is intended for those focused on long-term ownership rather than first-season rewards.

ACCESS & PRIVILEGES DURING THE PAYMENT PLAN

- ✓ Unlimited tee access
- ✓ Advance booking privileges up to 14 days
- ✓ Eligibility to activate a spouse, evening spouse, and dependents

The following are not included until the entrance fee is paid in full:

- Complimentary Locker
- Shareholder voting rights

WHO IT'S FOR:

This option is ideal for those who want to play, participate, and belong now while completing their investment over time.

Entrance Fee: \$15,000 + GST

Share Fee: \$500

Transfer Fee: \$500 + GST

Annual Dues: \$6,760 + GST

Capital Sustainability Fee: \$90+GST/month

Food & Beverage Minimum: \$900/Year

PAYMENT PLAN

\$2,500 + GST deposit due at signing

Four equal installments of \$3,125 + GST, payable on:

September 2026

April 2027

September 2027

April 2028

All payments are applied toward the \$15,000 Shareholder Entrance Fee.



UNRESTRICTED ASSOCIATE

NO BALLOT SYSTEM | NO RESTRICTIONS
TOP-TIER PRACTICE FACILITIES



The **Unrestricted Associate Membership** is designed for golfers who value flexibility, access, and the opportunity to fully immerse themselves in club life. With no ballot system and unrestricted tee access, this membership offers the freedom to play when you want, backed by Alberta's top-tier practice facilities and a vibrant community environment.

Members benefit from 14-day advance booking privileges and the option to activate spousal and dependent access, making it a well-rounded choice for both individuals and families. While this membership spans a maximum of three years, it also serves as a clear pathway toward full Shareholder status. To continue beyond the first season, a \$2,500 deposit is required by September 30th of Year 1—applied toward the club's Shareholder Entrance Fee.

BENEFITS

- ✓ Unrestricted Access
- ✓ No Ballot System
- ✓ 14 Day Advanced Tee Time Booking
- ✓ Activate a Spouse and Dependant
- ✓ Top-Tier Practice Facility

Annual Dues: \$8,010 + GST

Capital Sustainability Fee: \$90/month

Billed from April to October

Food & Beverage Minimum: \$900/year

TERMS & CONDITIONS

A non-refundable \$2,500 + GST deposit is due by September 30th of Year 1.

This deposit is applied toward the \$15,000 Shareholder Entrance Fee.

Remaining balance of \$12,500 + GST is paid in 4 equal installments of \$3,125 + GST.

Starting Year 2, member begins paying Shareholder annual dues.

If the deposit is not made by September 30th, the member is not eligible to return for Year 2.



RESTRICTED ASSOCIATE

PREMIUM ACCESS | FLEXIBILITY FOR YOUR
TEAM | BUILT FOR BUSINESS LEADERS



The **Restricted Associate Membership** is ideal for golfers who prefer weekday flexibility with partial weekend play while still enjoying the benefits of a private club. With no ballot system, structured access, and use of Alberta's top-tier practice facilities, this membership suits those who don't need full-week play but still want to belong to a strong golf community.

Members enjoy unlimited access Monday to Thursday, access before 11 AM or after 5 PM on Fridays, and after 2 PM on weekends and holidays. During the final three weeks of the season, to accommodate 11 AM shotgun starts, Restricted Associates may book after 4 PM daily.

Spousal access (Evening Spouse Membership) and junior dependents can also be added to this membership. A non-refundable \$2,500 deposit is required by September 30th of Year 1 to continue into Years 2 and 3—applied toward the Shareholder Entrance Fee.

BENEFITS

- ✓ Monday to Thursday: Unlimited Access
- ✓ Friday: Before 11 AM or After 5 PM
- ✓ Weekends & Holidays: After 2 PM
- ✓ 14-Day Advance Booking Mon-Thurs
7-day advance booking for Friday,
Saturday, Sunday & Holidays
- ✓ Activate an Evening Spouse

Annual Dues: \$5,415 + GST

Capital Sustainability Fee: \$90/month
Billed from April to October

Food & Beverage Minimum: \$750/year

TERMS & CONDITIONS

A non-refundable \$2,500 + GST deposit is due by September 30th of Year 1.

This deposit is applied toward the \$15,000 Shareholder Entrance Fee.

Remaining balance of \$12,500 + GST is paid in 4 equal installments of \$3,125 + GST.

Member may remain on Restricted dues for the full three-year period.

If the deposit is not made by September 30th, the member is not eligible to return for Year 2.



CORPORATE MEMBERSHIP

PREMIUM ACCESS | FLEXIBILITY FOR YOUR
TEAM | BUILT FOR BUSINESS LEADERS



The **Corporate Membership** is designed for companies looking to invest in premier golf access and client entertainment at the Petroleum Golf & Country Club. This category allows businesses to hold a Corporate Share, providing full privileges for a *Designated Representative* and flexible play opportunities for additional Restricted players.

From unlimited golf for your designate to structured access for team members or clients, this membership delivers exceptional value, prestige, and convenience for professionals who want to enjoy one of the region's finest golf experiences while strengthening relationships both on and off the course.

YOUR CORPORATE BENEFITS

Corporate Designate:

- ✓ **Full playing privileges** with zero restrictions on tee time
- ✓ Ability to book tee times up to **14 days in advance**
- ✓ **Unlimited access** to the course, practice facilities, and clubhouse
- ✓ Eligibility to activate a spouse, evening spouse, and dependents

Restricted Associate (Up to Three)

- ✓ Monday to Thursday: **Unlimited Access**
- ✓ **Tee Access Friday:** Before 11 AM or After 5 PM
- ✓ Weekends & Holidays: **After 2 PM**
- ✓ **14-Day Advance Booking** Mon-Thurs
7-day advance booking for Friday,
Saturday, Sunday & Holidays

WHO IT'S FOR:

Business owners, executives, or companies that value premium golf experiences as part of their corporate culture. Ideal for teams who want access flexibility, networking opportunities, and the prestige that comes with being part of an established private club.

Entrance Fee: \$25,000 + GST

Share Fee: \$500

Transfer Fee: \$500 + GST

ANNUAL DUES

Corporate Designate: \$6,760 + GST

Capital Sustainability Fee: \$90/month

Food & Beverage Minimum: \$900/Year

Restricted Player: \$5,415+ GST

Capital Sustainability Fee: \$90/month

Food & Beverage Minimum: \$750/Year

GOLF SIMULATORS

YOUR GAME, YEAR-ROUND.

Simulator Access

Simulator access is available to **Shareholders**, **Shareholder dependents**, and **Associates** who have placed a deposit toward next season's dues. This exclusive benefit ensures our members can continue to practice and enjoy the game during the off-season, keeping their skills sharp year-round.

OPEN DAILY FROM 10AM - 6PM

Courses: Access to over 1000 different virtual golf courses.

Simulators: We offer two high-quality virtual golf simulators.

Capacity: Each simulator can accommodate a maximum of 4 players at any given time.

Booking: Each player will need approximately 1 hour of simulator time to play 18 holes. Back-to-back bookings are allowed, so you can reserve the time you need for your game. Standard bookings parameters apply based on membership category.

Amenities: Grab-and-go snacks and beverages are available for purchase.

RATES

Monday to Friday until 4pm
\$30/hr/unit

Evenings and Weekends
\$40/hr/unit

Private bookings available
\$50/hr/unit

*hours may be extended based on demand.

EVENT BOOKINGS | PLEASE CONTACT
LEAGUE PLAY | PLEASE CONTACT

Kyle Boyd
Joey Busetto

KBoyd@PetroleumGolf.ca
JBusetto@petroleumgolf.ca

GOLF RATES FOR GUESTS

| | PRIME TIME | NON PRIME TIME |
|--------------------|------------|----------------|
| 18 Holes | \$150 | \$130 |
| 9-Holes | \$90 | \$80 |
| Jr. 18-Holes | \$65 | \$55 |
| Jr. 9-Holes | \$45 | \$40 |
| 9 & Dine | | \$90 |
| POWER CART | | \$50/\$26 |
| GOLF BOARD/SCOOTER | | \$25 |



IMPORTANT DETAILS

Each guest is permitted up to **6 rounds** per season.

**pricing is subject to change



Wine Club

We are excited to offer our Members the opportunity to join our exclusive Wine Club, a unique experience designed for the true connoisseurs of fine wine. For just \$150 per month, you will receive a carefully curated selection of six premium bottles of wine from some of the finest vineyards around the world, personally selected by our sommelier. Each month, you'll enjoy four exquisite reds and two delightful whites, ensuring a diverse and exciting tasting experience.

Why Join Our Wine Club?

1. Premium Selection: Our sommelier selects only the best wines, offering you an exceptional variety that you might not find elsewhere.
2. Convenience: Enjoy the luxury of having top-quality wines delivered directly to you, perfect for personal enjoyment or entertaining guests.
3. Discover New Favorites: Expand your palate and discover new favorite wines every month with our expertly curated selections.
4. Community: Join a community of fellow wine enthusiasts and share your love for fine wine with other club members.

for more information please contact Kayla
kcox@petroleumgolf.ca





EXCLUSIVE WINE LOCKER PROGRAM

ENHANCE YOUR WINE EXPERIENCE AT THE PETROLEUM GOLF & COUNTRY CLUB WITH OUR EXCLUSIVE WINE LOCKER PROGRAM. FOR JUST \$150 PER YEAR, YOU CAN ENJOY THE CONVENIENCE AND LUXURY OF HAVING YOUR OWN PERSONAL WINE LOCKER AT THE CLUB.

HERE'S WHAT MAKES IT SO APPEALING:

HALF-PRICE CORKAGE:

BENEFIT FROM HALF-PRICE CORKAGE AT JUST \$10, ALLOWING YOU TO SAVOR YOUR WINES AT A FRACTION OF THE USUAL COST.

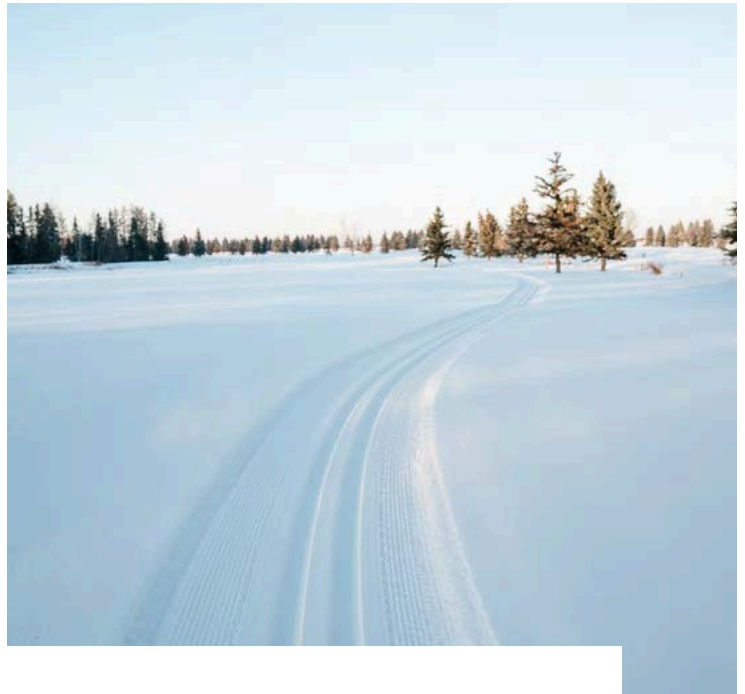
PREMIUM EXPERIENCE:

YOUR WINE LOCKER GIVES YOU AN EXCLUSIVE PLACE TO KEEP YOUR OWN WINE COLLECTION, READILY AVAILABLE, PERFECTLY COMPLEMENTING OUR GOURMET DINING OPTIONS.

JOIN OUR WINE LOCKER PROGRAM TODAY AND TAKE YOUR WINE ENJOYMENT TO THE NEXT LEVEL. THIS UNIQUE OFFERING IS PERFECT FOR THOSE WHO APPRECIATE THE FINER THINGS IN LIFE AND WISH TO HAVE THEIR OWN PERSONAL WINE COLLECTION AVAILABLE AT THEIR CONVENIENCE. CHEERS TO AN EXCEPTIONAL WINE EXPERIENCE!

FOR MORE INFORMATION PLEASE CONTACT KAYLA
KCOX@PETROLEUMGOLF.CA





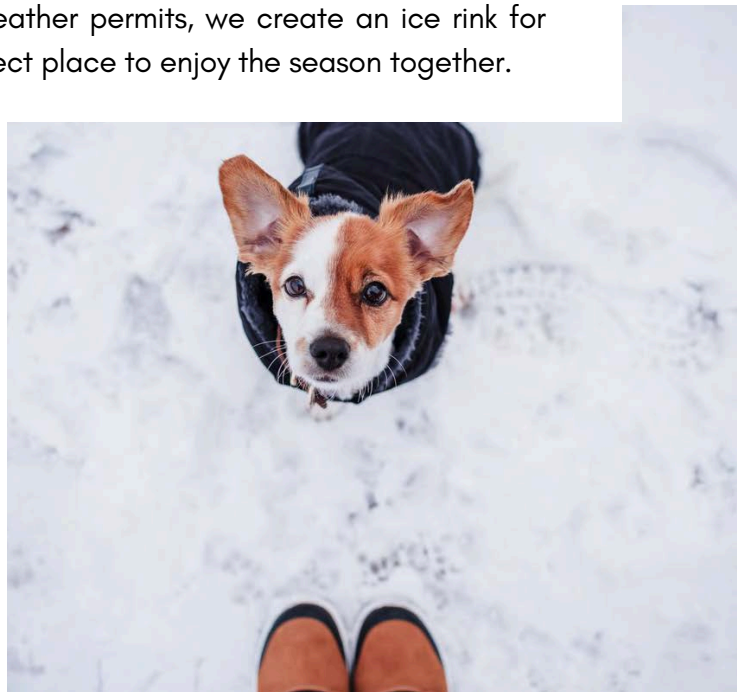
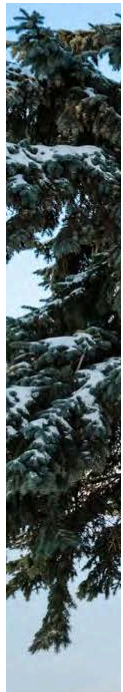
Year-Round Club Experience

Winter at the Petroleum Golf & Country Club

At the Petroleum Golf & Country Club, membership extends far beyond the golf season. Our year-round experience ensures members continue to enjoy the club with exclusive winter activities designed for both recreation and relaxation.

Winter Amenities:

- **Private Cross-Country Skiing Trails** - Glide through the course on meticulously maintained ski tracks, offering a peaceful and scenic winter experience.
- **Dedicated Dog Walking Paths** - Enjoy a quiet walk with your dog on designated paths, providing a safe and enjoyable space for both members and their pets.
- **Private Outdoor Skating Rink** - If weather permits, we create an ice rink for our members and their families. A perfect place to enjoy the season together.



Share Purchase

Become a part of our exclusive shareholder community by purchasing a share from the club's treasury. The cost breakdown is as follows:

\$500 for the Share
\$500+GST for the Transfer Fee
\$15,000+GST for the Entrance Fee
Member Dues of \$6,760+GST Apply

www.petroleumgolf.ca

This is your chance to secure your place as a shareholder and enjoy the full benefits that come with it. For more details on becoming a shareholder, please contact:

Tanya Vanthuyne



780-470-0700, 110



TVanthuyne@PetroleumGolf.ca



51320 Range Road 260
Spruce Grove, Alberta T7Y 1B1