



## HDPE Locker Range

### **Weather Resistant Gen 1**

HDPE Weather Resistant Lockers are the ultimate outdoor locker, designed with a sealed door and water strip. Suitable for most conditions, the locker is UV-resistant, weather resistant, and vandal-resistant.

Supplied by



**1300 272 657**  
**OLP.COM.AU**

## Key Features and Benefits

- Variety of door sizes that could be stacked to create different configurations
- Weather resistant
- UV, rust, corrosion, bacteria and vandal proof
- Strong and resistant to damage
- Easy to clean
- Low maintenance
- Recyclable
- Padlatch as recommended locking system
- 25kg shelf capacity uniformly distributed load (UDL)
- 20-year product warranty (8-year warranty for outdoor, undercover use)



## Product Parameters

Code	Item Description	Dimensions (mm)
O5-201	Steelco HDPE Weather Resistant Locker – Half Height	910H x 388W x 520D
O5-202	Steelco HDPE Weather Resistant Locker – Third Height	610H x 388W x 520D
O5-203	Steelco HDPE Weather Resistant Locker – Quarter Height	460H x 388W x 520D

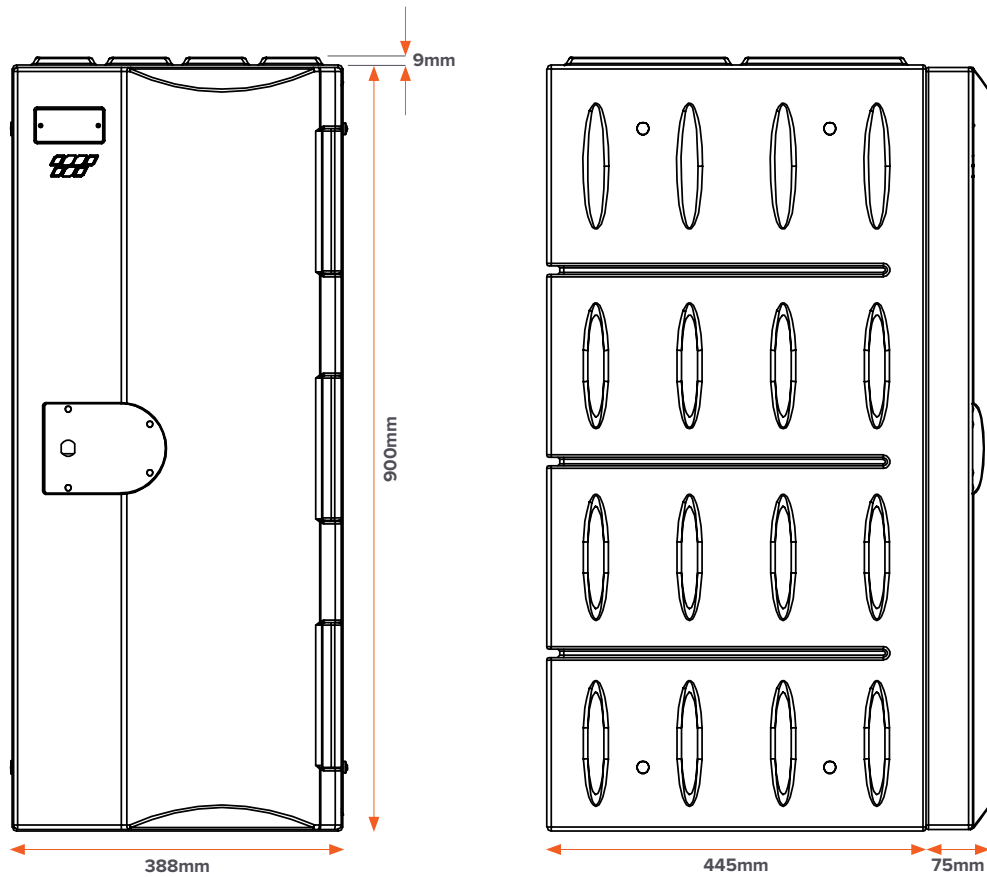
## Customisation

We pride ourselves on delivering products to our customers that meet their specific requirements. As a result of our manufacturing capabilities, if you're looking for a custom size, colour or product, chances are we can do it!

**Contact your local sales representative for more information.**



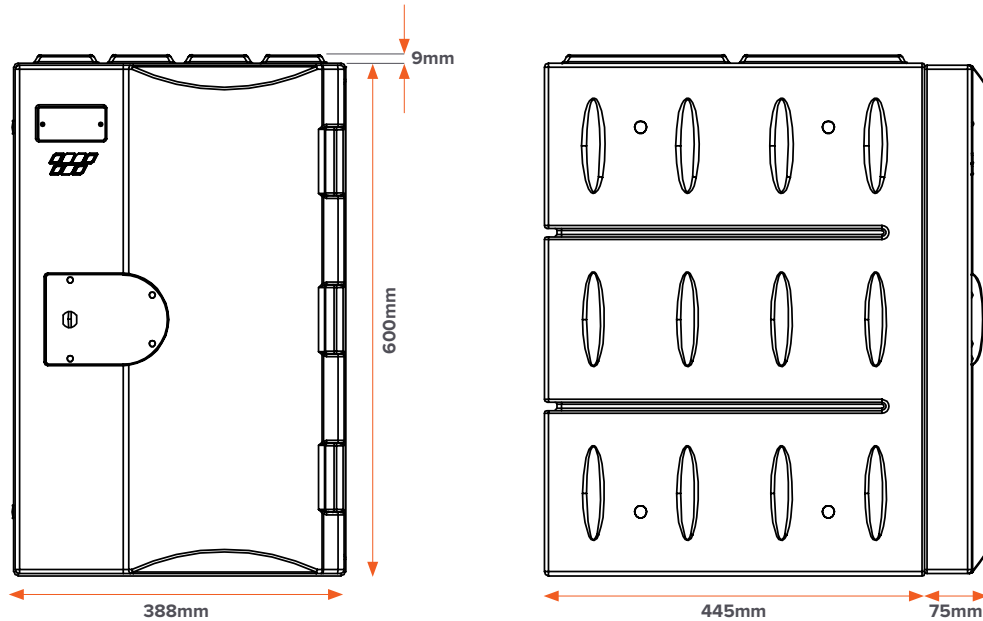
## Dimensions



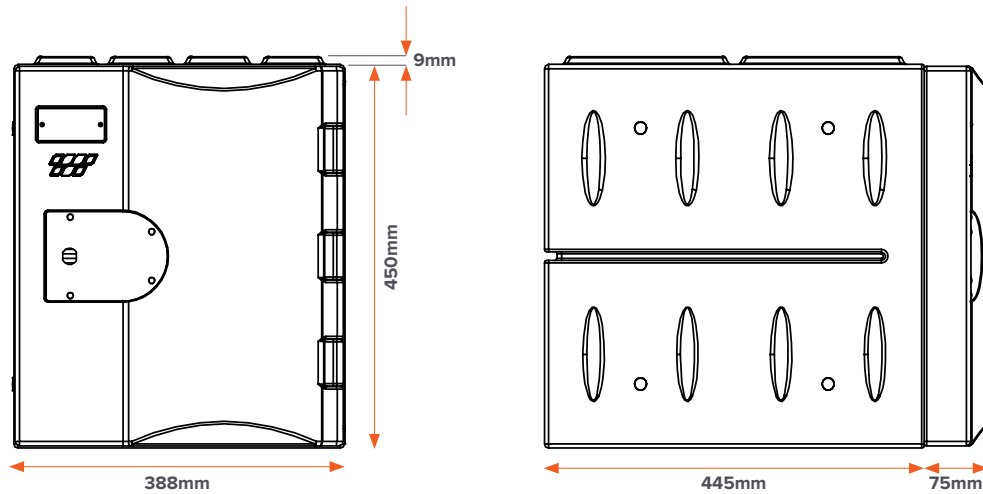
Half Height

Manufacturing tolerance: +3mm -7mm

## Dimensions



Third Height

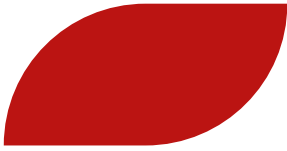


Quarter Height

Manufacturing tolerance: +3mm -7mm

## Custom Colours (POA, MOQ and lead time applies)

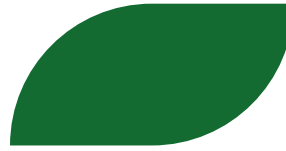
We offer a wide range of custom colours to suit your brand or project needs. Please note that custom colours may require additional lead time and minimum order quantities may apply. Please contact your local sales representative.



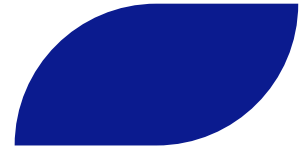
Red



Yellow



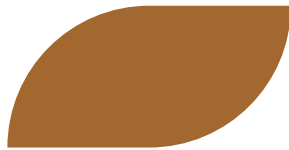
Green



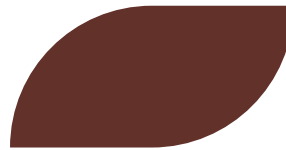
Navy Blue



Grey



Coffee



Burgandy



Dark Grey



Custom

## Accessories

### Sloping Top

Sloping Tops are perfect to prevent the buildup of dust and dirt.

### Height Adjustable Feet

Adjustable Feet offers compensation for uneven floors, ensuring stable positioning.

### Numbering

Lockers can be equipped with numbers to help users easily identify their locker.

### Wall Fixing Kit or Dynabolt

The Wall Fixing Kit or Dynabolt safely secure the locker to the wall or floor. This added stability is essential in preventing tipping and ensuring user safety.

### Hanging Rail

Hanging rails are available to install inside the locker compartment for hanging storage. They provide a practical solution for keeping uniforms, jackets, or bags neat and wrinkle-free.

### Additional Shelf

Additional shelves are available to add storage space within each tier. These shelves help separate personal items, improving organisation and maximising vertical space.

### Lock Cover

The Lock Cover protects your lock system from weather damage. It extends the lifespan of the locking mechanism by shielding it from moisture, dust, and debris.

### GPO and USB

GPO and USB capabilities can be installed to allow users to charge their devices while using the locker.

### Base

Bases elevate the locker off the ground for easier access to lower doors – 80mm high. This also protects the locker from floor moisture and simplifies cleaning underneath.

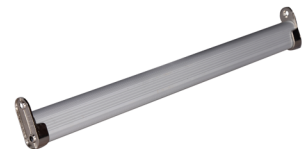
Images are for illustration purposes only, subject to change. For more details on the available accessories, please contact your local sales representative.



Sloping Top



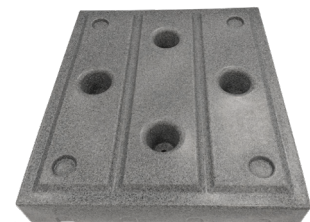
Numbering



Hanging Rail



Lock Cover



Base

## Accessories

### Locker Seat and Stand

The Locker Seat and Stand is the perfect solution to give your locker units more functionality.

### Locker Stand

The locker stand elevates the locker off the ground for easy access and cleaning underneath. It adds a layer of protection from floor spills or debris in busy environments.

### Island Bench

Specifically designed to coordinate with Lockers, Seats, and Stands, the Island Bench gives the user additional off floor storage as well as a practical and robust seating option.



Locker Seat and Stand



Island Bench

Code	Item Description	Dimensions (mm)
O1-104	Steelco Steel Black Frame Island Bench	450H x 1000-2400L x 420D
O1-104	Steelco Steel Black Frame Island Bench	450H x 1000-2400L x 530D
O1-104	Steelco Steel Black Frame Island Bench	450H x 1000-2400L x 640D
O1-104	Steelco Steel Black Frame Island Bench	450H x 1000-2400L x 750D
O1-104	Steelco Steel Black Frame Island Bench	450H x 1000-2400L x 860D

Images are for illustration purposes only, subject to change. For more details on the available accessories, please contact your local sales representative.

## Certifications and Sustainability Features



### Made with HDPE Plastic

HDPE (High-Density Polyethylene) plastic has a high strength-to-density ratio, making it durable, impact-resistant, and ideal for both heavy-duty and everyday applications. It is resistant to moisture, chemicals, and UV exposure, ensuring long-lasting performance in demanding environments. HDPE helps reduce environmental impact through reusability and minimal degradation during recycling.



### Australian Trusted Trader

OLP is an accredited Australian Trusted Trader, recognised by the Australian Government for our secure and compliant international trade operations. This accreditation signifies our commitment to ethical sourcing, customs compliance, and risk management allowing us to build stronger partnerships and deliver more efficient, transparent supply chains.



### APCO

OLP is a member of the Australian Packaging Covenant Organisation. OLP is committed to reducing the environmental impact of our packaging. We use packaging that prioritises recyclability, and avoids excess plastic and other materials.



### Sedex

OLP is a registered supplier in the Sedex Ethical Sourcing Platform. OLP is committed to improving ethical, social and environmental standards at every step of our supply chain. **Reference No. ZC1011847**



### ISO 9001:2015 – Quality Management System

OLP has a Quality Management System (QMS) that focuses on continuous improvement in customer service to our clients, including the delivery of quality products and services that are manufactured and provided to the highest industry standards. By following our QMS we are able to control the quality of all products that we distribute regardless if they are custom one-offs or our standard range.



### ISO 14001:2015 – Environmental Management System

OLP's Environmental Management System (EMS) gives us the ability to identify better allocations of our "resource, waste and energy management" minimising our environmental footprint. The focus on providing an eco-friendly environment has significantly reduced our environmental impact and subsequently our entire networks impact, with the hope that it continues to reduce going forward into the future.



### ISO 45001:2018 – Occupational Health & Safety

OLP has adopted international best practices in our systematic approach to health and safety management, by focusing on a proactive approach rather than reactive controls. From this structure it is easy to see that OLP has a rigorous OHS policy and management system in place to protect the health and safety of our employees and visitors at all OLP facilities and sites.



### Product Stewardship

OLP embraces product stewardship by taking responsibility for the entire lifecycle of our products, from design and manufacturing to use and end-of-life. We implement take-back schemes, offer recycling support, and partner with industry programmes to ensure products are disposed of sustainably. This commitment reduces landfill waste and promotes responsible resource use.





**Customer satisfaction is an imperative component of the comprehensive service that OLP provides. OLP strives to meet objectives and deliver products and services to meet our customer's needs.**

OLP also endeavours to provide a better product and ongoing service, to do this we follow our ISO 9001:2015 certified quality management system.

### **Business Development Managers**

We are represented in every state of Australia and New Zealand. If you wish to get in touch with us, please contact your local sales representative.

[\*\*www.olp.com.au/contact\*\*](http://www.olp.com.au/contact)



**Steelco**  
Storage Solutions



© Copyright 2025 | All rights reserved

Due to our policy of continuous product development, information in this document may be subject to change without notification.

Version 2025\_2