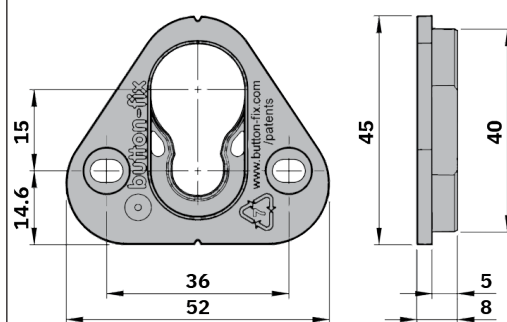


Declaration of Performance Type 1

Button-fix product codes	171-001-11 (100 pack) 171-001-12 (12 pack)
EAN barcodes	5060740150064 (100 pack) 5060740150118 (12 pack)
Component drawing numbers	171-001-2E (Fix housing) 171-002-1C (Button)
Supplier	Buttonfix Limited Unit A, 1 Britton Street, London EC1M 5NW, UK
EU Authorised Representative	AR Experts BV, Boeingavenue 209, 1119PD, Schiphol-Rijk, The Netherlands
Country of manufacture	United Kingdom
Product description	Panel connector intended for furniture construction and interior fittings
Material	Nylon PA6, 30% glass fill, Altech A 2030/109 (Both Fix and Button)
Harmonised Standards	There are no applicable EU Harmonised Standards for this product
Independent test reports	Sandberg LLP: 45501/X/01 (11/04/2012) Engineering Dynamics: EN2477-2 (29/05/2019)(available on website)
Guide loads	Four Type 1 fasteners can support up to 200kg (440 lbs) on a vertical panel, and up to 110kg (240 lbs) in ceiling orientation, provided that the screws and substrate are properly matched and all other installation instructions are complied with.
Web address	www.button-fix.com/products/button-fix-type-1

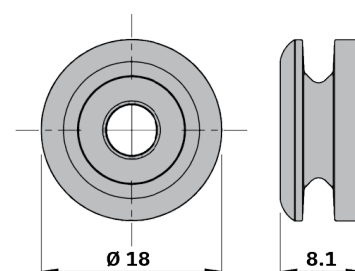


Fix dimensions



Mass = 6.0 g

Button dimensions



Mass = 1.4 g



Philip Hall, Technical Manager
London, November 2025

