

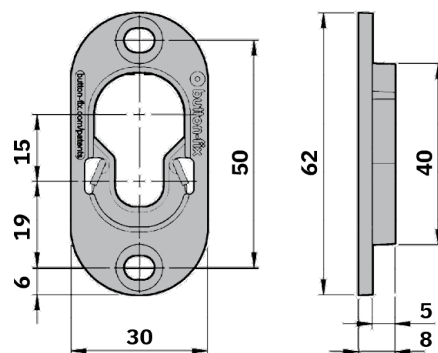
Declaration of Performance

Type 1 Metal

Button-fix product codes	171-021-11 (50 pack)
EAN barcodes	5060740150095 (50 pack)
Component drawing numbers	171-021-1A (Fix housing) 171-022-1B (Spring) 171-002-8B (Button)
Supplier	Buttonfix Limited Unit A, 1 Britton Street, London EC1M 5NW, UK
EU Authorised Representative	AR Experts BV, Boeingavenue 209, 1119PD, Schiphol-Rijk, The Netherlands
Country of manufacture	United Kingdom
Product description	Panel connector intended for furniture construction and interior fittings
Material	ZL-2 zinc alloy (Fix and Button) 316 stainless steel (Spring)
Harmonised Standards	There are no applicable EU Harmonised Standards for this product
Independent test reports	Sandberg LLP: 65275/M-B (16/07/2019) Engineering Dynamics: EN2477 (20/05/2019) (available on website)
Guide loads	Four Type 1 Metal fasteners can support up to 350kg (770 lbs) on a vertical panel, and up to 230kg (500 lbs) in ceiling orientation, provided that the screws and substrate are properly matched and all other installation instructions are complied with.
Web address	www.button-fix.com/products/button-fix-type-1-metal

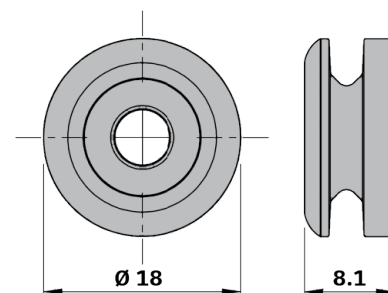


Fix dimensions



Mass = 24.3 g

Button dimensions



Mass = 7.0 g



Philip Hall, Technical Manager
 London, November 2025

