

PG Kammprofile Gaskets

PRODUCT

PG Kammprofile Gaskets

PRODUCT USAGE

PG Kammprofile gaskets are one of the most versatile gaskets available. Comprising a metal core with precision machined grooves and soft sealing faces to both sealing surfaces, Kammprofile offer the user a wide range of seating stresses in an easy to handle gasket that is superior to spiral wound, metal jacketed and other metal gasket types.

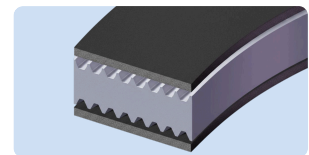
The gasket core is available in any machinable metal and is combined with graphite or PTFE facings for the ultimate chemical resistance. Mica facings allow the gasket to operate at extreme temperatures without the risk of corrosion.

Kammprofile gaskets may be specified for all flange types including those on heat exchangers and pressure vessels.



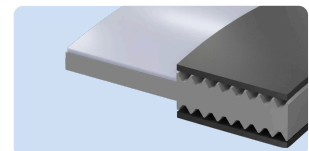
Style PGK-1

Serrated metal core with facing specified for OEM equipment, vessel flanges and heat exchanger flanges.



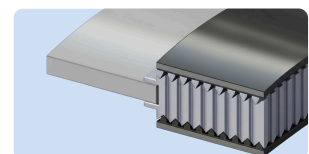
Style PGK-2

Serrated metal core with integral guide ring and facing. Specified for ANSI and DIN flanges. Also OEM equipment, vessel flanges and heat exchanger flanges.



Style PGK-3

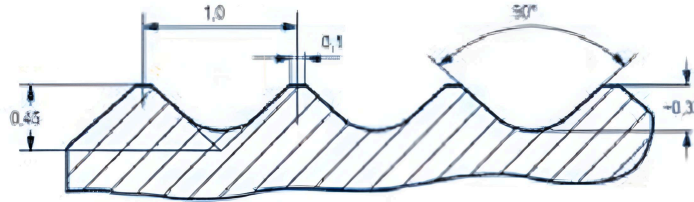
SSerrated metal core with loose guide ring and facing. The loose guide ring stops flange movement damaging the gasket via the guide ring.



Component	Standard	Optional
Core Thickness	3.0mm	Any
Facing Thickness	0.5mm	0.75mm
Surface Finish Requirement	3.2 - 6.4Ra	-
ASME Constants	m=2 & y=2500PSI	-
Tolerances Up To 1000mm	+/- 0.4mm	-
Tolerances Above 1000mm	+/- 1.0mm	-

PG Kammprofile Gaskets

Standard profile according to EN DIN 1514-6

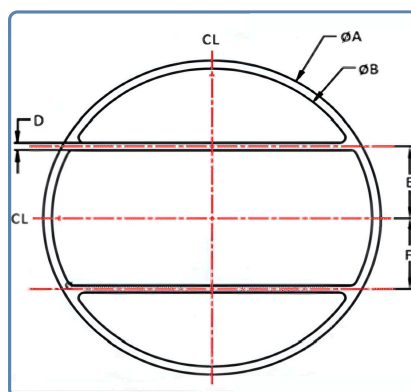
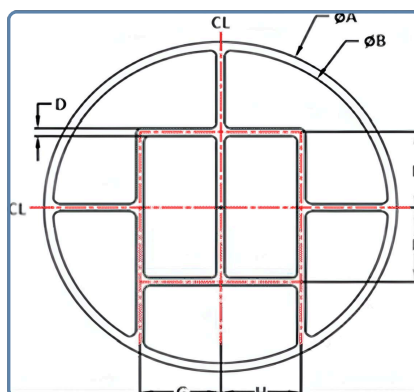
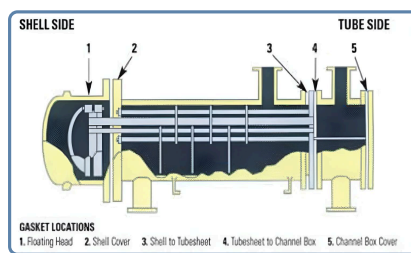
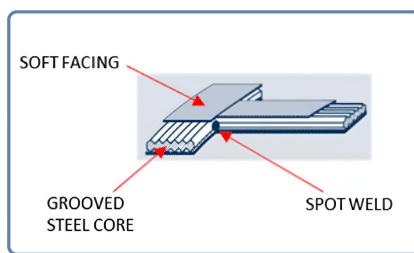


Core Materials		Facing Materials	Flange Types	
Stainless Steel	304, 316, 347, 410	Graphite	ANSI B16.5	RF
Nickel Alloys	20, 200, 400, 600, 625, 800, 825	Modified PTFE	ASME B16.47 A&B	Flat Face
Cupro Nickel	Copper, Brass	CNAF	DIN	Ring Joint
Others	Aluminum, Titanium	Silver	JIS	Groove

PG Kammprofile gaskets replace Spiral Wound and Metal Jacketed gaskets in heat exchanger applications. The gasket is resistant to thermal expansion and over compression which can cause other gaskets to leak. Kammprofile do not suffer from radial shear or wire draw which are common issues with metal jacketed gaskets.

PG Kammprofile gaskets are supplied with pass bars and represent the most effective method of sealing a partitioned vessel. The outer diameter provides a secure seal to atmosphere while the bars effectively separate partitions with no loss of efficiency.

PG Kammprofile gaskets are robust and are easy to fit even at the largest diameters unlike fragile spiral wound.



A= Outside Diameter B= Inside Diameter All Partition Dimensions Are C/L Of Gasket To C/L Of Bar

PG Kammprofile Gaskets

Shapes Of Pass Ribs Made To Suit The Equipment

