

Annual Report

2024/2025

*Celebrating 20 years of the Limestone Coast's
own community foundation*



standlikestone

philanthropy | influence | legacy

Our patch

The Limestone Coast

The Stand Like Stone Foundation acknowledges Aboriginal People as the First People and Nations of the ancestral lands and waters of the Limestone Coast. We acknowledge the elders past, present and future and we respect the deep feelings of attachment and relationships of Aboriginal People to Country including the language groups: Meintangk, Potaruwutij, Bunganditj, Tatiara/Ngarkat, Tanganekald (Southern Clans) and Ngarrindjeri.

FRONT PAGE IMAGE: Swinging with the Stars 2025 courtesy of Georgia Paige Photography.

Keith

Bordertown

Padthaway

Kingston S.E.

Lucindale

Naracoorte

Robe

Coonawarra

Penola

Beachport

Millicent

**Mount
Gambier**

**Port
Macdonnell**

Our year *in review*



42

local students supported
with **\$92,640** in educational
scholarships



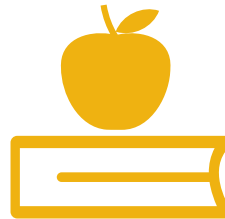
17

local charitable projects
supported with **\$73,852**
in annual small grants



1

innovative housing project
feasibility exploration began
backed with **\$50,000**
from OneFortyOne



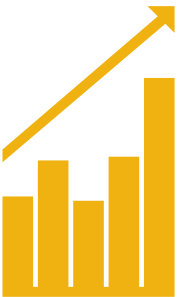
357

\$50 Back to School vouchers
provided to local schools
totalling **\$17,850**



1

charitable project supported
with **\$2,460** through the
'Friends of Stand Like Stone
Champion' Grant



\$111,626

Influenced an additional
\$111,626 of community
funding



11%

Increased net assets
by **\$639,832** or 11%

How we work

As one of the leading community foundations in Australia, we have proudly supported the Limestone Coast through our charitable grant making, programs and educational scholarships since 2004.

Today, we continue to work in partnership with donors, local organisations, and community leaders to strengthen communities within our region, increasing their opportunities, and responding to the immediate and long-term needs of our Limestone Coast community.

As a philanthropic community foundation, we want to involve more people in giving, help to tackle some of the toughest problems we face, and assist more people to realise their potential.

We will continue to work with our partners in the Limestone Coast to accomplish this in our role as funder, enabler, capacity builder, advocate, and agent for change.

Welcome

Join us in celebrating a year of kindness and courage with the people and projects of the Limestone Coast.

Our Vision

To inspire community kindness and courage.

Our Mission

To build on the generosity of spirit within our community and promote investment in the Limestone Coast for lasting impact.

We know how much the people in this region love the Limestone Coast and we share that passion.

We believe it takes teamwork, innovation, passion, courage and kindness to achieve lasting impact. Each year, and in partnership with our community, we help local students and families return to school with dignity, we support local students to realise their dreams, and assist local volunteers, and not-for-profit groups to find ways to benefit more people in their communities.

We are proud to help ignite the potential of local people and local projects now and forever.

At Stand Like Stone, we believe in **finding courage in our own troubles, and giving kindness in another's.**

Our Values



Inclusive

Engaging with our community in all its diversity.



Collaborative

Facilitating partnerships that build and strengthen our Limestone Coast community.



Accountable

We are open, transparent and accountable in all aspects of our operations; we are cost effective and sustainable; we adhere to proper corporate governance and funds management principles.



Responsive

Valuing and respecting our donors, funding partners and applicants, upholding their dignity, and listening actively to their ideas and concerns.



Empowering

Strengthening our community by increasing the capabilities and resilience of individuals, groups and organisations.

“Life is mostly froth and bubble,
Two things stand like stone,
Kindness in another's trouble,
Courage in your own.”

Adam Lindsay Gordon's poem *Ye Wearie Wayfarer* was the inspiration for the foundation's name. The poem encompasses the objectives of the foundation.

From our Chair

A year of reflection, renewal and bold planning for an even stronger future.

In November, we proudly celebrated 20 years of community impact at a special luncheon at The Barn. It was a moment to honour the vision of our founders, share stories of generosity and recognise the extraordinary people who continue to make the Limestone Coast stronger through Stand Like Stone.

Stand Like Stone's story is written through countless acts of kindness and community spirit:

- A young boy who found belonging and a love of learning through a simple gift of school shoes.
- A student who could now continue her online studies thanks to a compassionate grant for a new computer.
- Migrants learning English alongside new friends, turning strangers into neighbours.
- Volunteers transforming community halls and pony club kitchens into places of pride and connection.
- And donors like the late Lorry Humphreys, whose entire estate now supports local students, and Debra Richards-Jones, whose \$5 weekly gift over many years has grown into a remarkable legacy of generosity.

These stories capture the very essence of Stand Like Stone, "local people creating local solutions".

They belong not just to the Foundation, but to the people of the Limestone Coast: every donor, every volunteer and every community member who believes in the power of giving where you live.

As our community continues to evolve, so too does the Foundation itself. This year has brought important transition, and we take great pride in how Stand Like Stone continues to grow and adapt while remaining true to its purpose. We acknowledge Roger Babolka for his leadership as CEO through a challenging post-COVID period and thank Sally Klose for stepping in as Interim CEO.



Georgie McKay, Chair

In June, we welcomed Jason Wallace as our new CEO, a respected community leader whose passion for the Limestone Coast and deep understanding of our region aligns perfectly with our mission.

The philanthropic landscape is also transforming. The Federal Government's release of the Taxation Administration (Community Charity) Guidelines 2025 marks a historic milestone for community foundations across Australia. This long-awaited reform finally enables regional foundations like ours to access new streams of funding and better support grassroots initiatives, a change shaped in part by advocacy that began right here in the Limestone Coast.

In 2024, the Board also began refreshing our Strategic Plan, engaging with Ian Bird, CEO of Community Foundations Australia, to explore new opportunities under this evolving framework. The updated plan, launching in 2025/26, will position Stand Like Stone to grow its reach, strengthen community-led giving and build resilience for generations to come.

Our signature event, Swinging with the Stars, was again an incredible success, raising record funds thanks to the energy of our stars and generous community. We welcomed Ray White Mt Gambier Penola & Robe as the major sponsor and would like to acknowledge Tahlia Gabrielli for her ongoing support of the event. I would like to thank Tamara Kilsby, Jade Charlton and the team at Envy Dance Studio who did a stellar job in transforming our eight local stars! Special congratulations must go to Brody Virgo and Amelia Clarke for taking out the title and to Hoggett Merrett, who raised over \$78,000, the highest amount in the event's history!

My heartfelt thanks go to our small but mighty team, Jason Wallace and Sally Bailey, whose professionalism and care drive everything we do, and to our volunteer Board for their vision and commitment. We were delighted to welcome new Directors Tracey Grosser, Sandra Parsons, and Scott Harlock, who each bring knowledge of their local communities and fresh insight to inform the Board's decision making.

We are deeply grateful to our sponsors, Trans Australian Livestock and Freight Management, Ray Scott Group along with the local councils who support our work. We acknowledge the professional services provided by Sinclair Wilson, Galpins, DeGaris Lawyers and Herbert Smith Freehills Kramer and technical support from helloFriday and Green Triangle Electronics.

We also acknowledge Aussie Broadband and R.W. & D.D. Gabriel Electrical Contractors and our trusted partners OneFortyOne & FRRR. The support of these partnerships provides the scaffolding that allows us to deliver lasting impact.

As we look ahead, we do so with optimism and pride. For 20 years, Stand Like Stone has been a beacon of generosity in the Limestone Coast, helping communities harness their strengths, respond to challenges and shape their own futures. Together, we are creating a region that is vibrant, resilient and full of possibility.

Georgie McKay

Chair – Stand Like Stone Foundation

From our Patrons



Stand Like Stone continues to grow as a vital part of the community of the Limestone Coast and lives to the motto 'Show kindness in another's trouble, Courage in your own'.

– **Doug Balnaves, Patron**



We must continue to build our community, strong in the knowledge that it is a caring and sharing community, recognising its strengths and diversity while seeking to offer a hand-up to those who may use it.

– **Dr Sue Charlton AM, Patron**

From our CEO

This year marks a turning point for Stand Like Stone – not only as we celebrate two decades of impact, but as we step boldly into a future of even greater possibility.

I joined the Foundation in June, and while I am new to this role, I am not new to the values that drive it. Growing up in a rural community taught me the strength of connection and the power of opportunity. My career in media and social services deepened that understanding, showing me how quickly life can unravel – and how transformative it is when communities stand together.

That is why Stand Like Stone matters. It is more than a fund; it is a permanent, community-owned engine for change. Every dollar invested becomes many dollars of impact – year after year, generation after generation.

Recently, we achieved a milestone that will shape our future: Stand Like Stone was endorsed as one of the first four community foundations in Australia to receive DGR1 status under new tax reforms. This reform is historic. It enables us to fund projects and services directly, attract major philanthropic contributions and cut red tape – accelerating our ability to respond where need is greatest.

Momentum is already building. Our partners at OneFortyOne have committed \$50,000 toward a housing initiative we aim to announce together soon. This is just the beginning of what's possible when we work together.

Looking ahead, our focus is clear: to take catalytic action on the biggest challenges facing the Limestone Coast – housing, education, equity and resilience. These are not problems any one organisation can solve alone. But together, we can shift the pendulum toward a more just and vibrant region.



Jason Wallace, CEO

I invite you to be part of this next chapter. Whether through volunteering, partnering, sponsoring, donating, or leaving a legacy gift, every contribution matters. The opportunities that shaped our lives can shape others – if we choose to give back.

To our donors, partners, volunteers, and community: thank you for standing with us. The past 20 years have proven what generosity can achieve. The next 20 will show what vision and collaboration can make possible.

Jason Wallace
Chief Executive Officer



Jamie and Peta Tidy of Naracoorte Seeds present a \$15,000 cheque to Stand Like Stone patron Doug Balnaves.

Celebrating 20 Years of Impact

Stand Like Stone's Milestone Luncheon

In November, more than 170 supporters gathered at The Barn to mark a major milestone — 20 years of giving, growing, and galvanising community spirit through the Stand Like Stone Foundation.

Since its inception, the Foundation has awarded over \$2.3 million in community grants, scholarships, and program support across the Limestone Coast, empowering local changemakers and nurturing future leaders.

“The luncheon was a chance to reflect on the journey, honour those who’ve shaped our story, and hear directly from grant and scholarship recipients whose lives have been touched by Stand Like Stone,” said chair Georgie McKay.

The event brought together a vibrant cross-section of the Foundation’s ecosystem — donors, sponsors, past and present directors, and community champions

— united in celebration of two decades of shared purpose.

Keynote speaker Ian Bird, Olympian and CEO of Community Foundations Australia, offered a compelling vision for the future, highlighting the pivotal role community foundations will play in shaping Australia’s next 20 years.

A highlight of the afternoon was a generous \$15,000 donation from Naracoorte Seeds, presented by Jamie and Peta Tidy to Patron Doug Balnaves. The donation will seed a new subfund dedicated to supporting charitable initiatives that strengthen rural communities across the Limestone Coast.

“Naracoorte Seeds exemplifies what it means to be a generous corporate citizen,” Ms McKay said. “Their support will help us continue building resilient, connected communities for generations to come.”

Celebrating 20 Years of Impact

A Toast to Legacy: Warwick Downs Wine Auction Raises \$16,390 for Limestone Coast Nursing Scholarships

The Stand Like Stone Foundation's 20 year anniversary celebrations reached a heartfelt crescendo with the auction of a treasured local wine collection, generously donated by Mrs Robyn Downs and family in honour of the late Warwick Downs.

Held at The Barn Palais and supported by the combined Rotary Clubs of Mount Gambier, the auction raised an impressive \$16,390 for the LM Woodruff Memorial Scholarship Sub Fund — supporting Limestone Coast students pursuing nursing careers.

Mrs Downs opened the auction with a moving tribute to Warwick's life and his love of red wine, culminating in a toast that set the tone for a spirited afternoon of generosity. Warwick, a former President and Paul Harris Fellow of the Rotary Club of Mount Gambier West, had long championed community philanthropy. His wine collection, lovingly curated over decades, now serves as a lasting gift to the region he loved.

Auctioneer David Herbert led the charge, turning bottles into funds for future scholarships with flair

and purpose. Coordinated by Neville Gilbertson, the partnership between Rotary and Stand Like Stone exemplified community collaboration at its finest.

This legacy-driven initiative honours Warwick's vision, Robyn's nursing roots, and the enduring power of giving back.



Former chairmen Bill DeGaris and Robert Mock cut the Stand Like Stone 20 year anniversary cake.



Mrs Robyn Downs reflects on the life of the late Warwick Downs prior to the wine auction.

Our Community Granting Programs

Almost \$74,000 distributed to support Community Projects across the Limestone Coast

A total of seventeen Limestone Coast community projects shared in close to \$74,000 throughout 2024/25.

This included 16 projects funded through our annual grant round.

Projects ranged from providing relief for families in need over Christmas with vouchers for food and toys to supporting disadvantaged schools with books tailored to their school library needs, as well as assisting the Naracoorte Longridge Aged Care facility with purchase of innovative dementia care equipment for residents.

Funds also supported the Millicent High School Pathways initiative to assist students with personalised alternative education opportunities. The 16 projects had a combined total project value of nearly \$178,000, demonstrating how contributions from Stand Like Stone leverage greater impact for the Limestone Coast. A total of 26 applications were received.

Further funding was allocated to support two Limestone Coast participants to attend the Australian Institute of Company Directors course.

This took the total granted for the year to **\$73,852.**

| ORGANISATION | PROJECT | SUB FUND | AMOUNT |
|--|--|---|-----------------|
| Mount Gambier Cancer Support Group Inc. | Provide cancer patients with financial support whilst travelling to undertake treatment. | Limestone Coast Agri-Links Mental Health & Stand Like Stone General | \$3,500 |
| Keith Theatre Group | Assisted with the purchase of audio equipment for their community productions. | Lorry Humphreys Memorial & Beth McKay Memorial | \$10,000 |
| Dymocks Children's Charities | Assisted with the purchase of a selection of library books to disadvantaged schools. | Stand Like Stone General | \$5,000 |
| Mount Gambier City Band Hall Inc. | Provided funds to repair wooden windows in the City Band Hall building. | Lorry Humphreys Memorial | \$4,000 |
| The Nurtured Village Hampers Ltd. | Supported monthly connection events for mums, reducing isolation and fostering community through accessible play-based gatherings. | Stand Like Stone General, Friends of SLS Community & Limestone Coast Agri-Links Mental Health | \$1,500 |
| Keith & District Hospital | Funds provided to support the Keith Hospital. | Keith & District Hospital Future Fund | \$1,949 |
| Penola Coonawarra Arts Festival | Funds provided to support the festival's Down The Lane kids program. | Lorry Humphreys Memorial, Annette Balnaves, Penola Coonawarra Wellbeing | \$3,620 |
| Longridge Aged Care | Assisted with the purchase of a Tovertafel projector system. | Naracoorte & Districts & Stand Like Stone General | \$10,000 |
| Millicent High School Pathways | Supported students with personalised and alternative education opportunities. | CCW Memorial | \$649 |
| Four Reasons Why | Awarded to assist with the FRW Christmas Kindness Family Packs project. | Brian Page Focus on Youth | \$3,700 |
| Carpenter Rocks Progress Association | Awarded to assist with the completion of the Pump Skate Track Park. | Steven Noble Memorial & Stand Like Stone General | \$4,000 |
| Foodbank – Mt Gambier | Awarded to assist with the purchase of a freezer to provide healthy food choices. | Stand Like Stone General | \$5,900 |
| Limestone Coast Toy Library Inc. | Awarded to assist with purchasing items to improve the literacy and arts collection. | Lorry Humphreys Memorial | \$3,675 |
| Tandara Lodge of Penola District Inc. | Awarded to assist with the installation of solar street/path lighting in the village. | Stand Like Stone General | \$5,900 |
| Holdfast Limestone Coast Inc. | Awarded to assist with the development of podcasts. | Lorry Humphreys Memorial | \$2,579 |
| Fringe Berrin Inc. | Awarded to support the 'Fringe OUTreach 2025' arts program to vulnerable groups and those who experience barriers to arts participation. | Lorry Humphreys Memorial | \$3,000 |
| Regional Development Australia Limestone Coast | Funding awarded to assist participants to attend the AICD Company Directors Course. | Stand Like Stone General | \$4,880 |
| TOTAL | | | \$73,852 |

Grant Recipient In Focus

Village of Support: Creating a Welcoming Space for Mums

Nurtured Village Hampers Limestone Coast launched the *Village of Support* in January – a monthly event held at Arena 51 Trampoline Park to offer a safe, welcoming environment for mums to connect.

The initiative is designed to reduce isolation and strengthen support networks through connection, care and shared experience.

Thanks to a \$1500 grant from the Stand Like Stone Foundation, the sessions were made more accessible by covering admission costs to the playzone area for children. This support helped remove financial barriers and ensured more families could participate.

Survey results from attendees highlight the impact:

- **68%** said they would have stayed home if not for the event.
- **50%** felt more connected to both the Nurtured Village and the wider community.
- **36%** reported stronger ties specifically to the Nurtured Village.

Around **210 mums** and over **280 children** have attended the sessions.

One standout feature has been the involvement of grandmothers and mum-like figures, whose presence adds intergenerational richness – offering wisdom, comfort and a sense of continuity that benefits both mums and children.

Participants shared heartfelt reflections about why the initiative was important to them:

“Getting to chat with other mums whilst my son was happy playing with other kiddos.”

“Seeing my children connecting with others.”

“Meeting new people and seeing the children get along also.”

“Seeing my child talk to other mums was my highlight as he’s such a shy kid so it was wonderful to see.”

“Just want to say thank you for holding these events, it’s lonely being a mum especially a mum who has no friends or family here.”



Venue manager David said it has been fantastic to observe the genuine connections and friendships that formed among the participants as Arena 51 regularly welcomed The Nurtured Village group.

“Each session brings warmth, laughter and a strong sense of community,” he said.

“It’s clear that these gatherings provide much more than just support, they create a safe, inclusive environment where mothers can share experiences, build confidence, and lift one another up – the sessions also offer wonderful opportunities for engagement between mothers and their children, allowing them to connect through play and shared activities in a supportive setting.

“Watching the group grow and seeing the positive energy it brings into our venue has been truly rewarding and we’re proud to play a small part in fostering that sense of belonging.”

As a series of now bi-monthly pop-up events, the Village of Support continues to create meaningful moments of connection and care – reminding local mums they are seen, supported and not alone.

Investing in Leadership: Scholarships boost company director capacity

Stand Like Stone Foundation partnered with Regional Development Australia Limestone Coast to support two scholarships for the prestigious Company Directors Course™ in a powerful demonstration of regional collaboration and leadership development.

Held in Mount Gambier, the intensive program, delivered locally by the Australian Institute of Company Directors (AICD), equipped eleven Limestone Coast professionals with advanced skills in governance, finance, risk, strategy and board effectiveness.

Participants represented a broad cross-section of sectors – from agriculture and community services to local government and small business – bringing diverse perspectives and real-world experience to the learning environment.

Stand Like Stone proudly supported scholarships for Nathaniel Modra and Kate Hill, two standout community leaders committed to strengthening regional decision-making.

The scholarships were designed to remove financial barriers and enable access to nationally recognised training, ensuring leadership development is inclusive and locally grounded.

“Any small business owner knows how hard it is to step away from your business, so it was fantastic to undertake this training in my hometown,” said Kate Hill. “I’m very grateful to RDALC and Stand Like

Stone for making this possible for both myself and Nathaniel.”

Stand Like Stone chair Georgie McKay affirmed the foundation’s commitment to building community capacity:

“These scholarships help strengthen vital leadership capacity across the Limestone Coast,” she said. “The AICD course is Australia’s leading governance program for Directors, and our support has made it more accessible to local participants.”

The course has already sparked tangible outcomes, with participants reporting increased confidence in board discussions, stronger strategic thinking and a deeper understanding of governance principles.

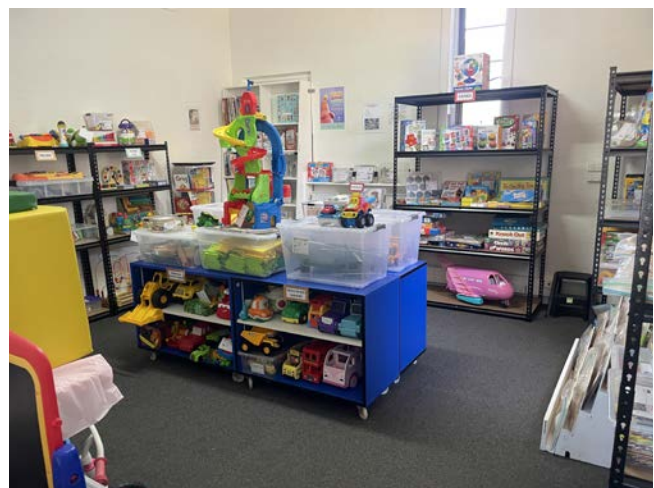


Kate Hill and Nathaniel Modra were supported with scholarships delivered in partnership between Stand Like Stone and Regional Development Australia Limestone Coast to complete studies with the Australian Institute of Company Directors.

Grant boosts toy library resources

Children will have access to modern resources to boost learning after the Naracoorte-based Limestone Coast Toy Library received funds as part of our annual small grants program.

The community toy lending library opened its doors in September 2023 with around 300 toys and now has over 800 to offer families in the region. Limestone Coast Toy Library secretary Lauren Sebek said “our project 'Read, Write, Create' will enable us to purchase toys that will increase and improve our literacy and arts collection, with the aim of supporting development of language and communication skills and encourage creativity for children in our region”.



Our Educational Support Programs

Limestone Coast students provided with a funding boost for study

Stand Like Stone provided 42 scholarships totaling \$92,640 to students across the Limestone Coast.

Strong interest continues in the scholarship program with 74 applications received. The scholarships support local students to complete studies across all levels of education, locally, across South Australia, and interstate.

"Thanks to the ongoing generosity of our donors, we're thrilled to be able to continue supporting local students in a variety of ways, whether it's paying for school fees, assisting with the purchase of course equipment, through to assisting with general living expenses or accommodation costs for students studying away," said Stand Like Stone chair Georgie McKay.

Mount Gambier resident Josh Tresidder was among recipients after his application embodied the essence of Stand Like Stone, demonstrating courage and determination whilst supporting young people to overcome challenges in life.

"Josh, who has received support through the LE & NC Myers Educational Scholarship fund, has shown a great deal of determination in dealing with a challenging childhood, but has been equally



Josh Tresidder was supported with a scholarship to study in 2025.

determined to support others through volunteering within his local community and also wants to contribute back to the Limestone Coast once he completes his studies, he's a real an inspiration to all," Georgie said.

The scholarship from Stand Like Stone provided Josh with financial support for his living expenses whilst studying a Bachelor of Digital Business at the University of SA.

"Our scholarships are all about giving local students the opportunity to thrive so that they, in turn, can make great contributions to our community in the future," Georgie said.

Scholarships offered for 2025

| Applicants by Local Government Area | Number of Scholarships offered | Total value of Scholarships offered |
|-------------------------------------|--------------------------------|-------------------------------------|
| City of Mount Gambier | 14 | \$30,140 |
| District Council of Grant | 1 | \$5,000 |
| Wattle Range Council | 7 | \$23,000 |
| Naracoorte Lucindale Council | 9 | \$14,050 |
| Tatiara District Council | 6 | \$16,550 |
| Kingston SE District Council | 4 | \$3,500 |
| Robe District Council | 1 | \$400 |
| Total Scholarships | 42 | \$92,640 |

Our 2025 Scholarship Recipients

Stand Like Stone’s scholarships have been made possible thanks to the generosity of people who have established or donated to one of our sub funds.

We would like to acknowledge and thank the following sub funds that funded scholarships this year, as well as congratulate the following students.

| STUDENT | SUB FUND |
|---------------------|---------------------------|
| Shelby Jones | LM Woodruff Memorial |
| Reuben Matthias | Kingston Community School |
| Masooma Fedayee | Balnaves Fdn |
| Mina Haidari | Balnaves Fdn |
| Stella Roach | Lucindale Area School |
| Paige Pinchbeck | Lucindale Area School |
| Sakina Hussaini | Balnaves Fdn |
| Emma Pinchbeck | Lucindale Area School |
| Hannah Kiefel | Lucindale Area School |
| Ryan Wegener | Cornerstone |
| Georgia Michalanney | de Nys Family Memorial |
| Jessica Eastwood | Rackhams |
| Brayden Rowe | LT O'Connor |
| Teangi Stephens | Lorry Humphreys |
| Jess Tresidder | Lorry Humphreys |
| Aarshi Ghimire | Cornerstone |
| Jorja Mules | Kingston Community School |
| Blake Sawyer | Mount Gambier High School |
| Brock Keding | General |
| Aaryan Ghimire | Cornerstone |
| Ashton Giles | Lucindale Area School |
| Katie Leyden | Lorry Humphreys |
| Matilda Rothe | Lorry Humphreys |
| Bobby Deering | Brian Page Focus on Youth |
| Zoe Mashado | Grant High School |
| Eliza Dower | Rackhams |
| Mia Booker | Kingston Community School |
| Claire Ogilvie | Balnaves Fdn |
| Charlie Hannemann | Poppy Crozier Memorial |
| Maddisen McFarlane | Rackhams |
| Joshua Tresidder | LE & NC Myers |
| Camille Batson | LM Woodruff Memorial |
| Nicholas Scott | Millicent High School |
| Tayla Rowe | Millicent High School |
| Annelise Janssen | Rackhams |
| Indie McNamara | Lorry Humphreys |
| Mia McPherson | Mount Gambier High School |
| Seth Lear | Vititec |
| Evie Modra | SARWG |
| Jack O'Connor | Mount Gambier High School |
| Jaxon Groves | Grant High School |
| Bien Jarloyan | Lorry Humphreys |

Helping Local Kids Start School Strong

More than 350 Back to School vouchers were distributed in 2025 by Stand Like Stone to public primary and area schools in the Limestone Coast thanks to generous donations from local people and businesses.

The \$50 Kmart vouchers are given to families to assist with the purchase of essential school items such as uniforms, clothing, shoes, school bags and stationery – items necessary for children to engage and participate at school.

Vouchers were provided thanks to \$17,850 in contributions from donors, mostly individuals in the Limestone Coast, for Stand Like Stone's 2025 Back to School initiative.

SLSF chair Georgie McKay said the Back to School program made a real difference to families and was more than a \$50 gift, enabling children to attend school with dignity, fit in with their peers and experience the sense of excitement that comes with a new backpack, shoes, pencil case or drink bottle.

"The Back to School program has proven to have significant impacts on children's attitudes to attending and being engaged at school and for many students having a new shirt or jumper for school means they 'fit in' and have a sense of belonging," Ms McKay said.

Since its inception in 2005, Stand Like Stone's Back to School program has distributed over \$685,000 worth of vouchers across the Limestone Coast thanks to past support of the Foundation for Rural and Regional Renewal (FRRR) and is now solely supported by donors as a local impact initiative.



Penola Primary School wellbeing coordinator Matt Crewe with Stand Like Stone chair Georgie McKay.



Millicent North Primary School's Karmel Finch with Stand Like Stone director Steve Duldig.



Stand Like Stone director Tracey Grosser with Mundulla Primary School's Sophie Ansell.



Naracoorte Primary School's Lucy Possingham (left) and Paul Harmer with Stand Like Stone director Ann Aldersey (centre).

Celebrating Youth Generosity Across the Limestone Coast

Stand Like Stone's Philanthropic School Awards 2024

Stand Like Stone Foundation's Philanthropic School Award Program launched in 2023 is well on its way to becoming a cherished tradition across the Limestone Coast, recognising young people who embody kindness, courage, and a spirit of generosity within their school communities.

Each participating school nominates one student whose actions reflect the values of philanthropy – whether through leadership, service, advocacy or quiet acts of compassion.

The program aims to nurture a culture of giving and community-mindedness among youth, offering a \$100 award and public recognition at each school's end-of-year presentation.

In 2024, fourteen schools participated in the program, honouring students whose stories inspire and uplift. These young changemakers remind us that philanthropy is not just about giving – it's about leading with heart.

2024 Philanthropic School Award Recipients

| STUDENT | SCHOOL |
|-------------------|--------------------------------------|
| Loretah Stanley | Allendale East Area School |
| Myk Biton | Bordertown High School |
| Zoe Doyle | Grant High School |
| Hamish Whitehead | Kangaroo Inn Area School |
| Tyson Rosenzweig | Keith Area School |
| Georgie Wirth | Kingston Community School |
| Olliver Todarello | Lucindale Area School |
| James D'Onghia | Millicent High School |
| Aurora Warden | Mount Gambier High School |
| Natasha Moore | Naracoorte High School |
| Mia Spiller | Penola High School |
| Lovely Agmata | St Martins Lutheran College |
| Claire Rowett | Sunrise Christian School, Naracoorte |
| Hayley Bartley | Tenison Woods College |



St Martins Lutheran College – Donna Jaeschke & Lovely Agmata

Director Donna Jaeschke presents the 2024 Philanthropic School Award to Lovely Agmata at St Martins Lutheran College, recognising her advocacy, empathy, and courageous leadership on issues of equity and inclusion.



Lucindale Area School – Jeanette Emery & Olliver Todarello

Director Jeanette Emery congratulates Olliver Todarello, recipient of the 2024 Philanthropic School Award at Lucindale Area School, recognised for his kindness, leadership, and community involvement.



Penola High School – Georgie McKay & Mia Spiller

Stand Like Stone Foundation chair Georgie McKay presents the 2024 Philanthropic School Award to Mia Spiller at Penola High School. Mia's compassion, advocacy, and volunteer service with the CFS exemplify the values celebrated by the Foundation.



Millicent High School – Steve Duldig & James D'Onghia

James D'Onghia is honoured with the 2024 Philanthropic School Award at Millicent High School, presented by director Steve Duldig. James's generosity and leadership in school and community radio reflect his deep commitment to others.



Tenison Woods College – Sandra Parsons & Hayley Bartley

Director Sandra Parsons presents the 2024 Philanthropic School Award to Hayley Bartley at Tenison Woods College, celebrating her leadership in sustainability, student wellbeing, and inclusive school initiatives.



*Stand Like Stone director Tracey Grosser
with Asha and Charlie Crozier and Charlie
Hannemann.*

Charlie Hannemann: Continuing Poppy's Legacy in Agriculture

When 21 year old Charlie Hannemann received the call from the Stand Like Stone Foundation, he was overwhelmed with emotion. The Brimbago local had just been named the inaugural recipient of the Poppy Crozier Memorial Agriculture Scholarship – an honour that carries deep personal significance.

Charlie and Poppy Crozier shared a lifelong friendship, growing up together in the tight-knit Tatiara community. From kindy to school formals, their bond was enduring. Tragically, Poppy's life was cut short in a car accident on the Dukes Highway in May 2023, while she was studying Agricultural Science at the University of Adelaide.

In the wake of their loss, Poppy's parents, Asha and Charlie Crozier, channelled the outpouring of community support into something lasting. With the help of Stand Like Stone, they established the Poppy Crozier Memorial Sub Fund just days after the accident. Since then, the fund has grown to over \$117,000, with donations flowing in from across Australia.

Now in his final year of the same Agricultural Science degree Poppy began, Charlie Hannemann is helping fulfil the vision behind the scholarship – to support Limestone Coast students pursuing careers in agriculture.

"I think it's incredibly special that they started university at the same time and that Charlie is able to finish off the same degree that Poppy started," said Asha Crozier. "Charlie is a great kid and they had a strong friendship, which they kept up over the years. It's symbolic of the first scholarship that Charlie gets to see her wishes out."

Charlie, who has spent summers working with local agronomy groups and on his family's farm – land farmed by his family for 76 years – says the scholarship eases the financial burden of studying away from home. "I've been farming since I was 12," he said. "You've got to be passionate about agriculture. It's not just about the dollars – it's about being a good custodian of your land."

The scholarship also includes a tailored work experience opportunity with Viterra (now Bunge), where Poppy had worked in the grower services team. The placement allows recipients to explore any department across the business, from site operations to head office roles. "Creating career development opportunities in regional South Australia is a focus for Viterra," said Bunge's HRBP Senior Manager Alyson Gilbey. "We're proud to support this scholarship and honour Poppy's memory."

Stand Like Stone Chair Georgie McKay added, "Work placements are such a vital part of advancing a student's career. We are honoured to create this opportunity in Poppy's name."

Our Community Partnerships

Support grows for Mount Gambier's Abbeyfield House

Abbeyfield House Mount Gambier was awarded the 2024 Stand Like Stone Foundation Friends Champion Grant, receiving \$2460 to install five large raised garden beds for resident use.

The grant supported outdoor activity, wellbeing and fresh produce for the independent living facility's residents, aged 55 and over.

"We're extremely grateful for the support from Stand Like Stone with this project," Abbeyfield House Committee Chair John Kirby said. "It provides our residents with an incentive to get outside and be active in tending to the vegetable and ornamental garden plots, as well as providing fresh organic vegies for the housekeeper to use in her cooking."

Abbeyfield House opened in 1991, providing secure, shared accommodation for up to 10 residents, along with a guest room for respite or trial stays. The raised garden beds will enhance the home's communal spaces and encourage social connection through gardening.

The Friends Champion Grant was made possible through the collective generosity of donors in the 'Friends of Stand Like Stone' program. The program was established in 2021 to provide an easy way for people to become a local philanthropist within the Limestone Coast community.

Friends contribute \$500 annually to support the work of Stand Like Stone, which helps us to implement the programs that are so meaningful to our local community and increase our impact across the region.



Abbeyfield House committee member and volunteer Harry Thurling with Stand Like Stone chief executive officer Jason Wallace inspecting the garden beds created for residents.

OneFortyOne backs housing innovation

OneFortyOne has provided \$50,000 to assist with development of a housing project for women over the age of 55 at risk of homelessness in the Limestone Coast.

The funds will support the early phase of planning and development of the project, with details of the community project to be announced once feasibility is explored further.

Stand Like Stone's vision is to be the catalyst for this major project bringing funding and service partners together to provide new solutions to the housing crisis.

This is the 12th year of our partnership with OneFortyOne, which has taken the tally of financial support flowing through Stand Like Stone to \$480,000.



Inspiring Kindness and Courage: A Community-Led Vision for In-Home Hospice Care

Stand Like Stone proudly partnered with the Mount Gambier Hospice Committee and the University of South Australia (UniSA) in 2024 to support a landmark feasibility study exploring the establishment of a dedicated in-community hospice facility in Mount Gambier.

This initiative reflects the foundation's deep commitment to community-led solutions that honour dignity, compassion, and care.

More than \$20,000 was raised at the Key 2 Kindness Charity Ball, hosted by local real estate business Key 2 Sale. Key 2 Sale Director Gail Richards was instrumental in securing the funding and rallying community support. "This is an incredible milestone for our region," said Ms Richards. "The generosity shown proves how deeply our community values compassionate end-of-life care."

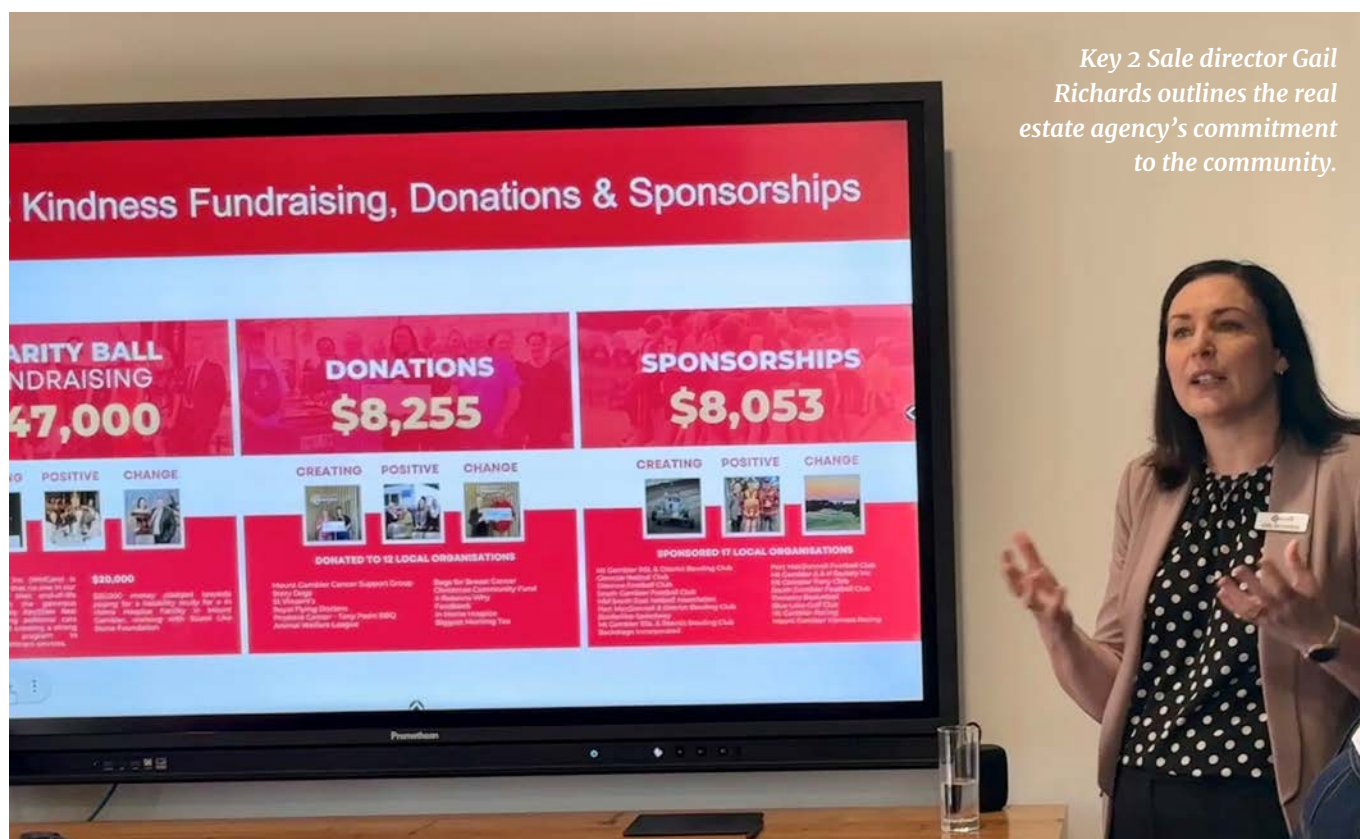
Stand Like Stone acted as trustee for the funds, enabling donors to contribute tax-deductible donations toward the study. "One of the benefits of Stand Like Stone is our ability to be flexible and

responsive to community needs," said chair Georgie McKay. "This project perfectly aligns with the foundation's vision to inspire kindness and courage."

The study will assess the viability, scope, and structure of a hospice facility, providing critical data to advocate for government support. "With a plan, we have something to sell to the government," Ms Richards added. "The research will help us make a compelling case for funding."

UniSA's involvement ensures rigorous, community-informed research. "We are excited to undertake this study," said Sandra Walsh. "It will provide valuable insights into how best to support those facing end-of-life care in our region."

Expected to conclude in 2025, the feasibility study as a key phase of the project stands as a testament to what can be achieved when philanthropy, research, and community care come together. Stand Like Stone is honoured to steward this journey, ensuring every donation contributes to a future where dignity, comfort, and care are accessible to all.





Swinging with the Stars people's choice winner Adam "Hoggett" Merrett and event winner Brody Virgo with their dance partners Ruby Charlton and Amelia Clark after being awarded at the gala event at The Barn in June.

Swinging with the Stars 2025 smashes previous records to raise \$211,000

Swinging with the Stars 2025 smashed all previous records at The Barn to raise more than \$211,000 to increase the impact of Stand Like Stone.

Eight regional stars lit up the dancefloor after months of rehearsals and fundraising with Adam "Hoggett" Merrett crowned the People's Choice winner after raising more than \$78,000.

"This group has been so encouraging and close and the generosity of all the people that have contributed for any of the dancers has been fantastic," he said.

The judges selected Brody Virgo, partnered with Amelia Clark, as the 2025 Swinging With the Stars winner after contestants competed in a hip-hop, waltz, quickstep and tango in front of a capacity crowd of more than 550 people.

"What everyone has done here and raised over \$200,000 together is just phenomenal for the whole region and to be part of it with this group of people is just absolutely fantastic," Mr Virgo said.

The event marked 17 years of the gala event that brings people together to support their favourite stars and raise funds for the Stand Like Stone Foundation in the Limestone Coast's big night of glamour and charitable competition.

This year's event featured a stellar Limestone Coast band compiled by Dale Cleves OAM and Isaac Bruggeman led by vocalist Tamara Seeley, while Jase Scheidl was the event MC.

Stand Like Stone chair Georgie McKay thanked all event and foundation supporters, particularly major event sponsor Ray White Mount Gambier and Tamara Kilsby and Jade Charlton of Envy Dance Studio for their dedication choreographing the four routines, training the stars and partnering them with local dancers.

She also paid tribute to the event committee, along with judges Kezia Feast, Kim Cella, Jayden Prelc and Ewan Grant.

Pictures: Georgia Paige Photography

2025 Stars



Adam "Hoggett" Merrett was crowned People's Choice winner after raising more than \$78,000, while Brody Virgo and dance partner Amelia Clark were judged the winners of the 2025 Swinging with the Stars at The Barn.

They were among eight stars and dance partners lighting up the dancefloor to raise more than \$211,000 for the Stand Like Stone Foundation.



Stars and their partners lit up the dancefloor at The Barn for Swinging with the Stars 2025, raising more than \$211,000 for the Stand Like Stone Foundation.

Adam Smith

Youth and mental health worker, raised funds to support the future of arts and trades through the Lorry Humphreys Arts & Trades Sub Fund.

Sarah Laurie

Robe fair trade clothing retailer, supported the newly created Robe and Districts Sub Fund.

Sofie Maiorano

Multi-talented barista, receptionist and interior/joinery designer, raised funds for the Penola Coonawarra Wellbeing Sub Fund.

Samantha Brown

Teacher and softball, supporting the Mount Gambier High School Educational Scholarship Sub Fund.

Josh Hancock

Farmer and weekend sailor, raised funds for the Kingston Community School.

Brody Virgo

Maths coordinator at Tenison Woods College, raised funds for the Limestone Coast Agri-Links Mental Health Sub Fund.

Adam "Hoggett" Merrett

of Merrett Logging raised funds for the Penola Coonawarra Wellbeing Sub Fund.

Ailie Staples

Galpins accountant, raised funds for the Steven Noble Memorial Sub Fund.

Event Sponsors & Supporters

- Ray White Mount Gambier
- The Barn Palais
- helloFriday
- Exchange Printers
- Envy Dance Studio
- Video Live
- Georgia Paige Photography
- Vanity Makeup Bar and Beauty Lounge
- Balnaves of Coonawarra
- Dzina Stem Florist
- She's Apples
- The Distributors Mount Gambier
- Tania von Stanke
- Commonwealth Bank
- Birdie Blue
- It's a Celebration
- Colin & Lynette Martin
- Craig Maria
- Steve Mullan Sound & Lighting
- Bricks & Mortar Coffee Co.
- Jase Scheidl MC

Our Sub Funds

As the Limestone Coast's community foundation, we are here to serve the needs and philanthropic aims of donors who wish to advance their community, now and in the future.

We believe a named fund is a great way to get involved in philanthropy and make a real difference to the community you love. All our sub funds have been established for different, very personal reasons, and with varying initial donation amounts.

Graeme Button Bequest

Graeme Button, a lifelong Mount Gambier resident and passionate Holden enthusiast, dedicated his career to the automotive industry — first as one of the earliest apprentices at O G Roberts, and later as the owner of Graeme Button Motors.

Known for his meticulous care of high-performance vehicles, Graeme's legacy has involved a significant philanthropic contribution with a generous bequest to the Stand Like Stone Foundation. When Holden closed, Graeme purchased one of the last HSV High Performance Commodores for \$160,000. After his passing, the car — driven only 15,000 kilometres — was sold at auction and returned a strong result, boosting the Button estate and subsequent bequest. His valued contribution will help support the ongoing operations of Stand Like Stone to support the Limestone Coast community. His gift stands alongside his other contributions to the Royal Flying Doctor Service, Team Kids and Foodbank, reflecting a quiet but powerful commitment to helping others.

We are grateful for the significant gift from the estate of Graeme Button and encourage others to consider leaving a bequest to Stand Like Stone in their will to support the Limestone Coast for generations to come.

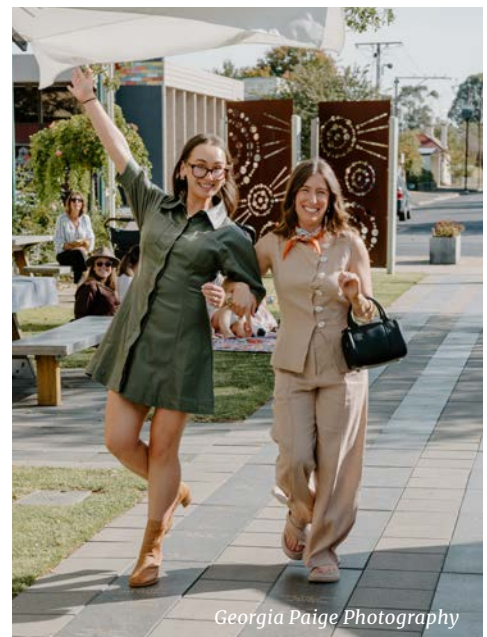
Ladies on the Lawn: A Stylish Celebration of Local Generosity

Penola Town Square once again played host in April 2025 to Ladies on the Lawn – a beloved community event that blends fashion, food and philanthropy.

Facilitated by the Penola Coonawarra Sub Committee of the Stand Like Stone Foundation, the afternoon brought together guests for a vibrant showcase of local style and spirit. Guests enjoyed a vibrant fashion show by Salt and Co Living, complemented by local wine, artisan coffee and platters.

But it wasn't just about style – it was about purpose, with 20% of all sales supporting Swinging with the Stars contestant Sofie Maiorano's fundraising for the Penola Coonawarra subfund of Stand Like Stone and every purchase helping sow seeds of community impact.

While Ladies on the Lawn is a joyful celebration of women, it's also part of a broader effort to bring people together, support wellbeing and raise funds that stay in our community.

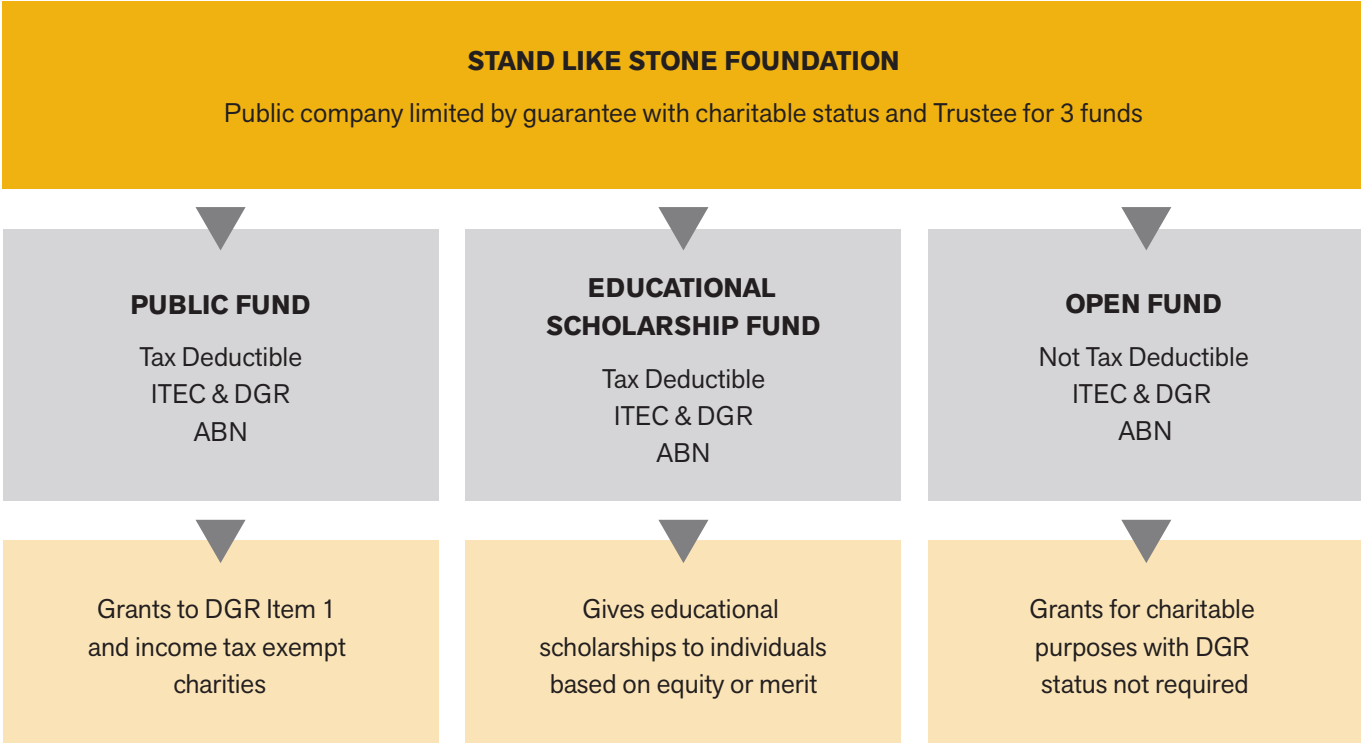


| SUB FUND | FUND FOCUS – GRANT GIVING |
|---|--|
| Stand Like Stone | Charitable projects benefiting the Limestone Coast. |
| Limestone Coast Agri-Links Mental Health | Charitable projects raising awareness of mental health. |
| Annette Balnaves | Established by the Balnaves Family, and renamed in memory of Annette Balnaves, for charitable projects benefiting the greater Penola Coonawarra region. |
| Beachport | Charitable projects benefiting the Beachport area. |
| Beth McKay Memorial | Established by the Limestone Coast Choral & Vocal Showcase in honour of the late Beth McKay, for charitable projects that will benefit youth developing skills in choral, vocal or performance arts with an emphasis on music. |
| CCW Memorial | Charitable projects and activities that assist disadvantaged students, or supports the Millicent Flexible Learning Centre and its students. |
| Brian Page Focus on Youth | Charitable projects with educational outcomes focusing on youth. |
| Keith & District Health Advisory Council Inc. | Established by Mig Brookman, for charitable projects benefiting and future proofing the Keith Hospital. |
| Lorry Humphreys Memorial | Established by an estate bequeathed by local artist, Lorraine Humphreys, for charitable projects benefiting the Arts and Trades. |
| Monbulla School Hall Community Development | To aid and support the sustainability of not-for-profit organisations who engage in charitable activities, and which are connected to the greater Penola Coonawarra district. |
| Monbulla School Hall Youth Support | To assist disadvantaged youth, connected to the greater Penola Coonawarra district, who require charitable support to participate in an educational or skills development activity. |
| Naracoorte & Districts | Charitable projects benefiting the greater Naracoorte region. |
| Penola Coonawarra Wellbeing | Charitable projects benefiting the greater Penola Coonawarra region. |
| South East Disaster Relief | Established following the winding up of the South East Relief Trust, for charitable projects to assist with disaster relief in the region, and/or funding education to disaster proof the Limestone Coast. |
| Steven Noble Memorial | Established in memory of Steven Noble, for charitable projects benefiting the communities of Allendale East, Port MacDonnell and Kongorong. |
| Naracoorte Seeds | Charitable projects benefiting rural communities and outcomes within the Limestone Coast. |
| Graeme Button Estate | To support Stand Like Stone's impact as the Limestone Coast's community foundation. |
| Robe & Districts | Provide grants for charitable projects in Robe and surrounding areas. |

| SUB FUND | FUND FOCUS – EDUCATIONAL SCHOLARSHIPS |
|-----------------------------|--|
| Stand Like Stone Foundation | General scholarships assisting students with a connection to the Limestone Coast. |
| Balnaves Fdn | Established by the Balnaves Foundation, scholarships assisting students, with a focus on young people, the disadvantaged and/or Indigenous communities. |
| Barrie Holmes Memorial | Established in memory of Barrie Holmes, scholarships assisting students with a focus on sports and athletic development. |
| Cornerstone | Scholarships assisting students identifying with the greater Bordertown area. |
| de Nys Family Memorial | Scholarships assisting students identifying with the greater Mount Gambier area. |
| Brian Page Focus on Youth | Scholarships assisting students identifying with the Limestone Coast at any level of education. |
| Grant High School | Scholarships assisting either past, current, or future students at Grant High School. |
| Keith Area School | Scholarships assisting either past, current, or future students at Keith Area School. |
| Kingston Community School | Scholarships assisting either past, current, or future students at Kingston Community School. |
| LE & NC Myers | Scholarships assisting young people, under or previously under the guardianship of the Minister, to achieve their goals in vocational and/or tertiary education. |
| LM Woodruff Memorial | Established in memory of Lyndsay Madeline Woodruff, scholarships assisting young women undertake a nursing career. |
| Lorry Humphreys Memorial | Established by an estate bequeathed by local artist, Lorraine Humphreys, scholarships assisting people seeking a career in a Trade and/or Arts. |
| LT O'Connor | Scholarships assisting students further their experiences and knowledge in music. |
| Lucindale Area School | Scholarships assisting either past, current, or future students at Lucindale Area School. |
| Millicent High School | Scholarships assisting either past, current, or future students at Millicent High School. |
| Mount Gambier High School | Scholarships assisting either past, current, or future students at Mount Gambier High School. |
| Penola Coonawarra Vititec | Established upon the winding up of Vititec, which aimed to increase grape growing and viticultural knowledge, scholarships assisting students with a connection to the greater Penola Coonawarra Region. |
| Poppy Crozier Memorial | Established in memory of Poppy Crozier and to assist students who are undertaking tertiary studies with an agriculture focus. |
| Rackhams | Scholarships assisting students with a connection to the Wattle Range Council area. |
| SA Rural Women's Gathering | Established by a donation from the Mount Gambier SA Rural Women's Gathering, and supported by Women in Business & Regional Development, with scholarships assisting women in pursuit of their educational goals. |

Our Financials

Stand Like Stone was established in 2004 by a group of visionary local leaders who wanted to create a permanent endowment fund for the lasting benefit of the Limestone Coast. As a philanthropic community foundation, we operate three funds for the benefit of the community, providing flexibility for the personal giving preferences of organisations and individuals.



DGR: Deductible Gift Recipient Status

DGR status entitles eligible charities to receive tax deductible gifts and donations.

ITEC: Income Tax Exempt Charity

Registered charities must be endorsed by the Australian Tax Office to be income tax exempt.

Establishment of our new **Community Charity Trust** is under way ready for launch in 2025/2026. This follows Stand Like Stone being granted Deductible Gift Recipient 1 (DGR1) status as a community charity thanks to federal taxation reforms.

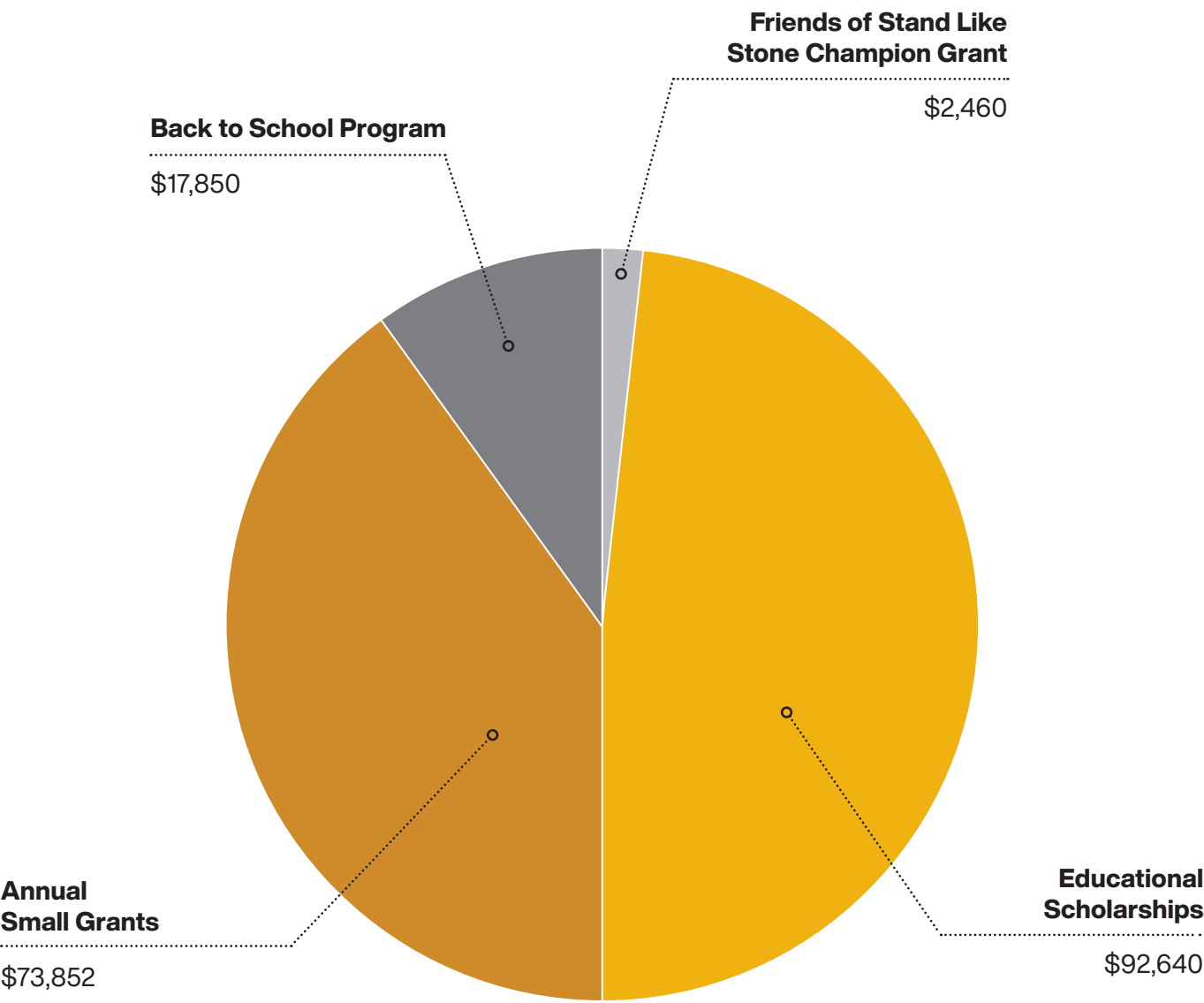
We are leading national transformation in the philanthropy sector as one of the first four community foundations Australia-wide to establish a Community Charity Trust under the new structure. The endorsement places Stand Like Stone alongside Melbourne’s Inner North Community Foundation, Australian Communities Foundation and Western Australia’s Fremantle Foundation and as the first in regional Australia.

For the Limestone Coast community, this means Stand Like Stone can now:

- Attract funds from a broader base of philanthropic support, including Public and Private Ancillary Funds (PAFs), attracting increased resources to the region.
- Provide grants to a wider range of charitable organisations and causes across the Limestone Coast.

The reforms represent the most significant change to Australia’s philanthropic landscape in over two decades, recognising the power of community governance to drive lasting social change.

In 2024/25 we have provided \$186,802 in grants, scholarships and program support to the Limestone Coast, as well as supporting a range of other initiatives.



Our funds continue to be professionally managed by two leading investment companies, JB Were and Warakirri.

JB Were is Australia’s leading provider of investment management and philanthropic services for the “for-purpose” sector. In 2001, JB Were established a dedicated Philanthropic Services team to provide specialist services to the firm’s “for-purpose” clients, such as community foundations.

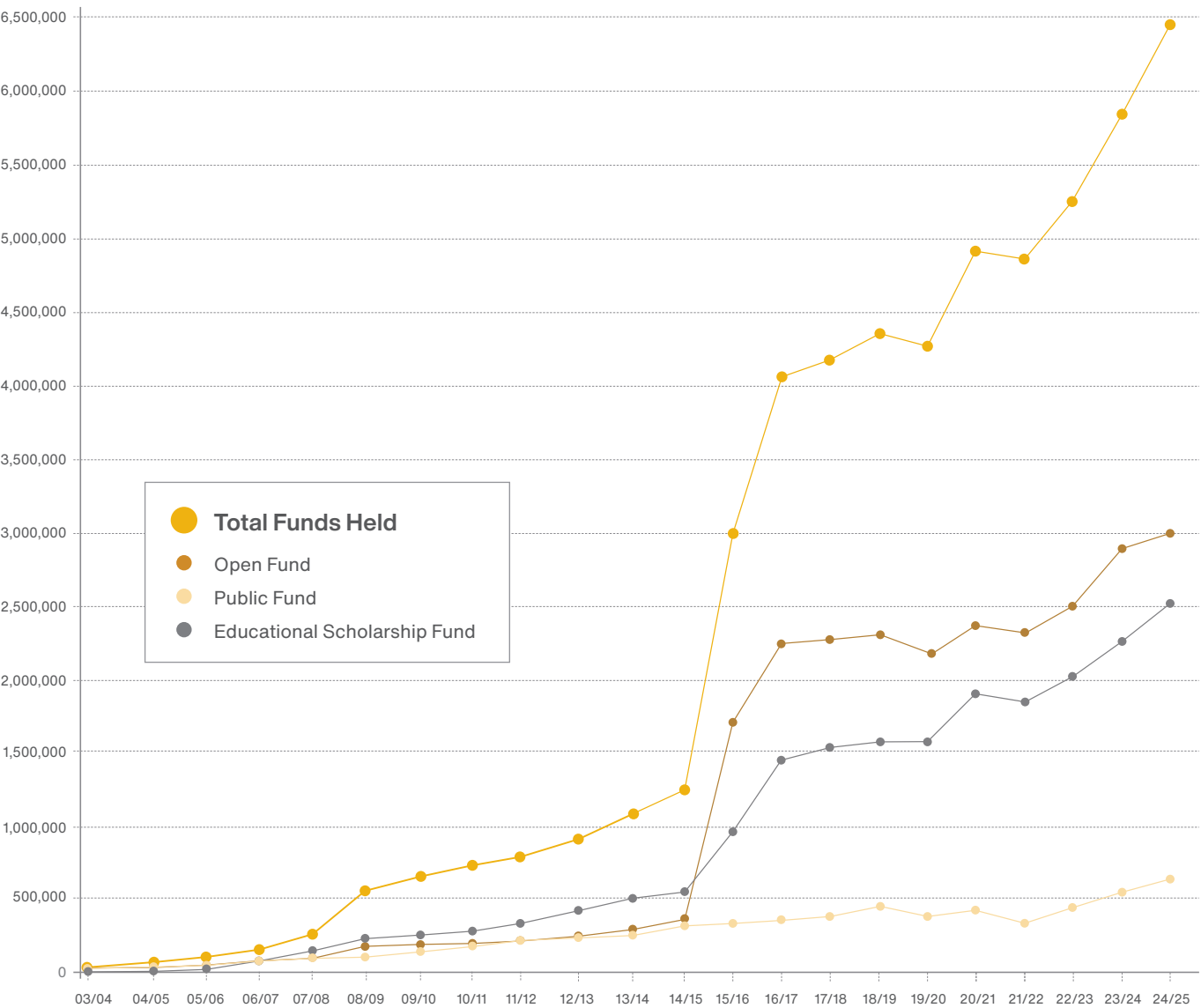
Warakirri was established in 1993 with a view to providing charitable and tax-exempt investors with an investment vehicle to managed specifically their tax-exempt status.

Stand Like Stone is invested in the Warakirri Ethical Australian Equities Fund which seeks to provide

investors with access to an actively managed portfolio of between 25-40 Australian companies with an ethical overlay managed by Warakirri and focused on investing in sustainable businesses that exhibit sound environmental, social and governance practices.

Overall, the year was a mix of good net asset growth, supported by improved earnings from investments. With the support of ongoing advice from JB Were throughout the year, we were again able to address some market exposures and maintain a diverse quality portfolio.

Our sincere thanks again to the hard work and support of JB Were and Warakirri as they continue to support the mission and growth of Stand Like Stone.



Financial Report

Abridged Financial Summary for year ending 30 June 2025

| | Public Fund | Open Fund | Educational Scholarship Fund | Administration Fund | 2025 Total | 2024 Total |
|--|------------------|------------------|------------------------------|---------------------|------------------|------------------|
| | \$ | \$ | \$ | \$ | \$ | \$ |
| Assets & Liabilities | | | | | | |
| Cash & Short Term Bank Deposits | 181,182 | 311,940 | 343,701 | 506,583 | 1,343,406 | 1,067,068 |
| Receivables | 34,933 | 68,117 | 40,431 | 66,853 | 210,334 | 75,990 |
| Listed Shares, Units and Managed Funds – At Market Value | 502,378 | 2,753,754 | 2,262,308 | - | 5,518,440 | 4,900,711 |
| Furniture, Equipment & IT | - | - | - | 6,318 | 6,318 | 516 |
| Our Total Assets | 718,491 | 3,133,812 | 2,646,439 | 584,178 | 7,082,920 | 6,044,285 |
| Our Total Liabilities | (54,005) | (126,975) | (102,979) | (335,301) | (619,260) | (224,879) |
| Stand Like Stone – Net Assets | 664,485 | 3,006,837 | 2,543,464 | 244,542 | 6,459,328 | 5,819,406 |
| Income & Expenditure | | | | | | |
| Community Support Received | | | | | | |
| Gifts & Donations | 140,198 | 63,357 | 175,953 | 26,140 | 405,648 | 492,541 |
| Events Income | - | - | - | 94,300 | 94,300 | 68,568 |
| Sponsorship | - | - | - | 20,000 | 20,000 | 20,000 |
| Council | - | - | - | 23,500 | 23,500 | 16,000 |
| Investment Income Earned | | | | | | |
| Earnings from Investments | 27,363 | 143,600 | 110,766 | - | 281,729 | 198,913 |
| Interest | 1,840 | 8,320 | 5,642 | 6,468 | 22,270 | 22,978 |
| Other Income | - | - | - | 400 | 400 | 656 |
| Less our Community Granting & Scholarships | (21,230) | (60,321) | (92,890) | (19,250) | (193,691) | (260,559) |
| Less our Net Administration Costs | (14,712) | (65,010) | (52,853) | (118,557) | (251,132) | (229,022) |
| Other Movement in Corpus* | (115,626) | (93,748) | (148,875) | - | (358,249) | (358,601) |
| Operating Surplus / (Deficit) | (17,833) | (3,802) | (2,257) | 33,001 | (44,775) | (28,526) |

*Note: "Other Movement in Corpus" reflects market revaluations and capital transfers, not operational revenue or expenses.

Sponsor Partners

Our sponsor partners are vital to our mission. Their generous financial and in-kind support helps cover operational costs — ensuring that more donor funds flow directly into community impact.

We are deeply grateful to the businesses and organisations who stand beside us in this way. Thank you to the following FY24/25 sponsor partners for your commitment to local giving.

Financial Sponsors

Trans Australian Livestock and Freight Management
City of Mount Gambier Council

Ray Scott Group

Tatiara District Council

District Council of Robe

District Council of Grant

Kingston District Council

Wattle Range Council

Total Result Ag Consulting

In-kind Sponsors

Sinclair Wilson, Accountants & Business Advisors

Galpins, Accountants, Auditors & Business
Consultants

Green Triangle Electronics

DeGaris Lawyers

Herbert Smith Freehills Kramer

helloFriday

Aussie Broadband

R.W & D.D Gabriel Electrical Contractors

Granting and Program Partners

Foundation for Rural & Regional Renewal

OneFortyOne



Sponsor Profile



The commitment of Sinclair Wilson to Stand Like Stone is both steadfast and deeply valued.

Since 2017, Sinclair Wilson has provided expert accounting guidance and support, helping Stand Like Stone to meet our financial and accounting obligations.

Their pro bono contribution includes the preparation of quarterly Business Activity Statements, oversight of our financials, completion of period end journals and reporting, as well as navigating the complexities of our unique charitable structure.

Their behind-the-scenes work ensures that Stand Like Stone's financial operations are transparent and compliant.

"It's hard to overstate the importance of Sinclair Wilson's support," said Georgie McKay, Stand Like Stone Chair. "Their generosity of time and expertise over many years enables us to focus on our mission, knowing our financial foundations are in safe hands."

Sinclair Wilson's enduring support reflects a genuine commitment to the Limestone Coast community and a belief in the power of philanthropy to create lasting change. Their contribution is a quiet but vital force behind everything we do.

And, as we ask with all of our sponsors, please consider supporting Sinclair Wilson as they have supported Stand Like Stone!



**Sinclair Wilson Principal
Felicity Melican**

Our People

Management Team



Jason Wallace
Chief Executive Officer
June 2025 – present



Sally Bailey
Accounts and
Grants Coordinator
August 2010 – present

Board of Directors



Georgie McKay
Chair
Aug. 2023 to present



Donna Jaeschke
Company Secretary and
Public Officer
Dec. 2014 to present



Kathryn Facy
Deputy Chair
Nov. 2017 to present



Sally Klose
Nov. 2017 to present



Steve Duldig
July 2019 to present



Jeanette Emery
Nov. 2020 to present



Ann Aldersey
June 2021 to present



Tracey Grosser
July 2024 to present



Scott Harlock
July 2024 to present



Sandra Parsons
July 2024 to present

Advisory Committees

GRANT MAKING

Jeanette Emery (Chair), Dec 2021 – present
Kathryn Facy (Chair), Dec 2017 – present
Roger Babolka (CEO), Jan 2022 – Jan 2025
Barbara Cernovskis (Community Member), Apr 2010 – Sept 2024
Rodney Summers (Community Member), Apr 2015 – present
Sally Klose, Dec 2024 – present
Fiona Pulford (Community Member), Apr 2025 – present
Jason Wallace (CEO), June 2025 – present

EDUCATIONAL SCHOLARSHIP

Ann Aldersey (Chair), Dec 2021 – present
Jeanette Emery (Chair), Dec 2020 – present
Roger Babolka (CEO), Jan 2022 – Jan 2025
Georgie McKay, Dec 2023 – Dec 2024
Jason Wallace (CEO), June 2025 – present
Tracey Grosser, Dec 2024 – present

INVESTMENT ADVISORY

Steve Duldig (Chair), July 2019 – present
Ann Aldersey, Dec 2022 – Dec 2024
Roger Babolka (CEO), Jan 2022 – Jan 2025
Georgie McKay, Dec 2023 – present
Sandra Parsons, Dec 2024 – present
Jason Wallace (CEO), June 2025 – present

FUND DEVELOPMENT (SWINGING WITH THE STARS)

Donna Jaeschke (Chair), Dec 2014 – present
Lauren Fox, Mar 2015 – present
Tahlia Gabrielli, Sept 2017 – present
Roger Babolka (CEO), Jan 2022 – Jan 2025
Kahlia Egan, Aug 2023 – present
Georgie McKay, Dec 2024 – present
Jason Wallace (CEO), June 2025 – present

BOARD NOMINATIONS

Georgie McKay (Chair), Dec 2023 – present
Kathryn Facy, Dec 2021 – Dec 2024
Roger Babolka (CEO), Jan 2022 – Jan 2025
Kirsty Balnaves (Independent), Dec 2022 – present
Sally Klose, Jan 2024 – Dec 2024
Jason Wallace (CEO), June 2025 – present
Scott Harlock, Dec 2024 – present

AUDIT & RISK

Sally Klose, Dec 2020 – Dec 2024
Steve Duldig, Dec 2020 – present
Ann Aldersey (Chair), Dec 2021 – present
Roger Babolka (CEO), Jan 2022 – Jan 2025
Sandra Parsons, Dec 2024 – present
Jason Wallace (CEO), June 2025 – present

COMMUNITY CHARITY TRUST

Formed in April 2025

Georgie McKay (Chair)
Kathryn Facy
Scott Harlock
Jason Wallace (CEO)

SPONSORSHIP

Georgie McKay (Chair), Dec 2024 – present
Ann Aldersey, Dec 2024 – present
Sally Klose, Dec 2024 – present
Jason Wallace (CEO), June 2025 – present

2024/25 Friends of Stand Like Stone

Scott and Alicia Forbes
Doug Balnaves
Deb & Graeme Paschke
Malcolm & Heather Lambert
Peter & Louise Stock
Georgie & James McKay

Robert and Glenda Mock
Stephanie Brooker-Jones and David Brooker
Jeff Wiese (Bordertown Rotary Club)
Justine Drew
Sue Page

Swinging with the Stars

Swinging with the Stars 2025

Photo Gallery



Stars, dancers and instructors Jade Charlton and Tamara Kilsby of Envy Dance.



Organising committee Tahlia Gabrielli, Georgie McKay, Kahlia Egan, Donna Jaeschke, Lauren Fox and Sally Bailey.



Patrons Dr Sue Charlton AM and Doug Balnaves.



Tamara Seeley leads the band of Limestone Coast musicians.



MC Jase Scheidl.



Judges Jayden Prelc, Kim Cella, Kezia Feast and Ewan Grant.



Board members and staff join the celebrations.

📍 9 Penola Road, Mount Gambier, South Australia 5290

☎ (08) 7701 9259

✉ info@standlikestone.com.au

🖱 standlikestone.com.au

Major Sponsors & Supporting Partners



standlikestone

philanthropy | influence | legacy